



REGIONAL SPECIALISED METEOROLOGICAL CENTRE-TROPICAL CYCLONES, NEW DELHI TROPICAL WEATHER OUTLOOK

DEMS-RSMC TROPICAL CYCLONES NEW DELHI DATED 31.12.2023

TROPICAL WEATHER OUTLOOK FOR NORTH INDIAN OCEAN (THE BAY OF BENGAL AND THE ARABIAN SEA) VALID FOR NEXT 168 HOURS ISSUED AT 0600 UTC OF 31.12.2023 BASED ON 0300 UTC OF 31.12.2023.

BAY OF BENGAL:

YESTERDAY'S CYCLONIC CIRCULATION OVER NORTHEAST BAY OF BENGAL & ADJOINING BANGLADESH AT 1.5 KM ABOVE MEAN SEA LEVEL PERSISTED OVER THE SAME REGION AT 0300UTC OF TODAY, THE 31ST DECEMBER, 2023.

SCATTERED LOW AND MEDIUM CLOUDS WITH EMBEDDED MODERATE TO INTENSE CONVECTION LAY OVER SOUTH BAY OF BENGAL AND SOUTH ANDAMAN SEA.

*PROBABILITY OF CYCLOGENESIS (FORMATION OF DEPRESSION) DURING NEXT 168 HRS:

24 HOURS	24-48 HOURS	48-72 HOURS	72-96 HOURS	96-120 HOURS	120-144 HOURS	144-168 HOURS
NIL	NIL	NIL	NIL	NIL	NIL	NIL

*NOTE: EVERY 24HR FORECAST IS VALID UPTO 0300 UTC (0830 IST) OF NEXT DAY

ARABIAN SEA:

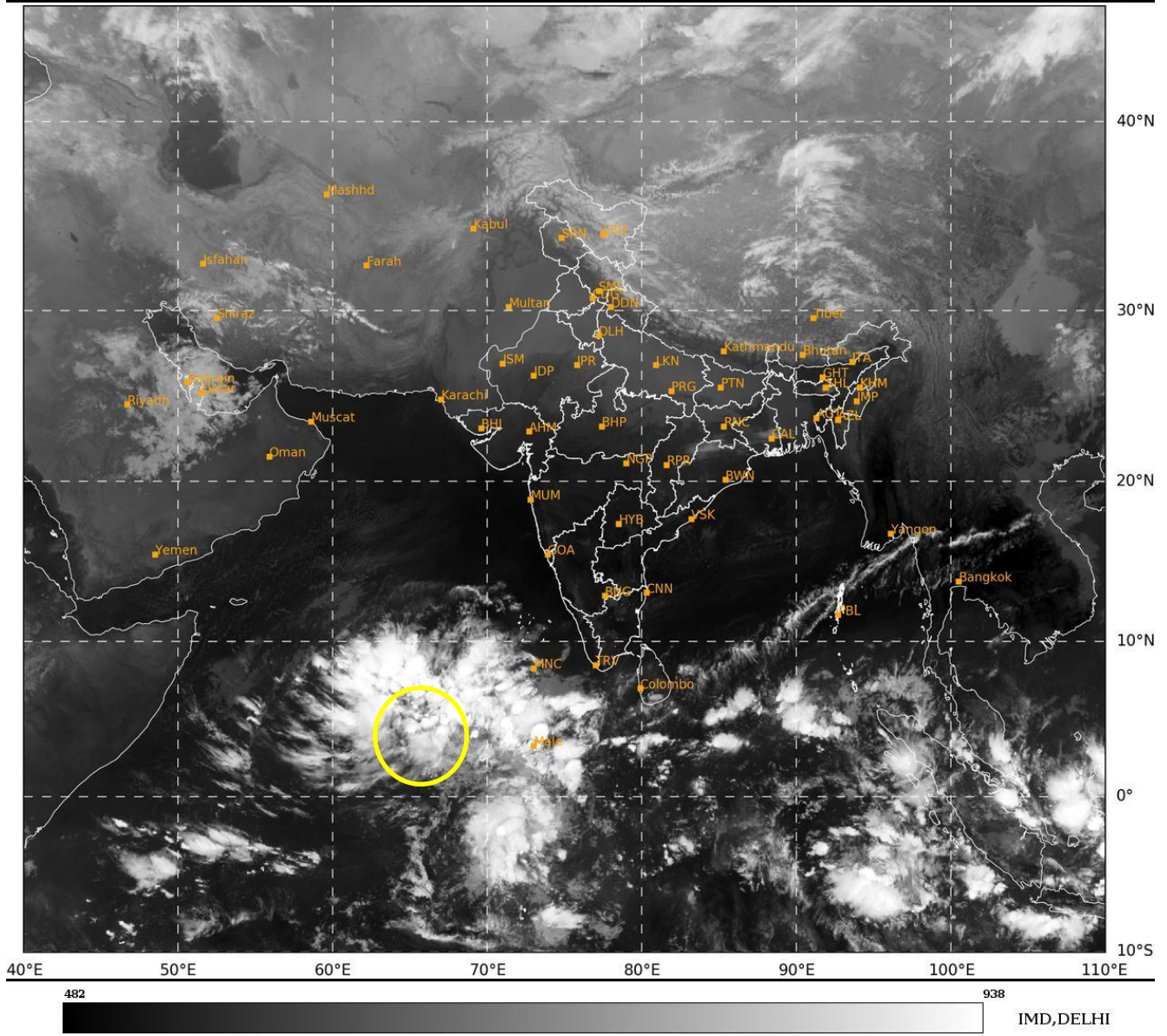
YESTERDAY'S LOW-PRESSURE AREA OVER THE WEST EQUATORIAL INDIAN OCEAN AND ADJOINING SOUTHEAST ARABIAN SEA PERSISTED OVER THE SAME REGION WITH ASSOCIATED CYCLINIC CIRCULATION EXTENDING UP TO MID-TROPOSPHERIC LEVELS AT 0830 HOURS IST (0300UTC) OF TODAY, THE 31ST DECEMBER, 2023. IT IS LIKELY TO MOVE WEST-NORTHWESTWARDS AND BECOME WELL-MARKED LOW-PRESSURE AREA OVER CENTRAL PARTS OF THE SOUTH ARABIAN SEA AND ADJOINING THE WEST EQUATORIAL INDIAN OCEAN DURING THE NEXT 48 HOURS.

SCATTERED TO BROKEN LOW AND MEDIUM CLOUDS WITH EMBEDDED INTENSE TO VERY INTENSE CONVECTION LAY OVER SOUTH ARABIAN SEA ADJOINING EQUATORIAL INDIAN OCEAN MALDIVES AREA (MINIMUM CLOUD TOP TEMPERATURE MINUS 93°C)

*PROBABILITY OF CYCLOGENESIS (FORMATION OF DEPRESSION) DURING NEXT 168 HRS:

24 HOURS	24-48 HOURS	48-72 HOURS	72-96 HOURS	96-120 HOURS	120-144 HOURS	144-168 HOURS
NIL	LOW	LOW	NIL	NIL	NIL	NIL

*NOTE: EVERY 24HR FORECAST IS VALID UPTO 0300 UTC (0830 IST) OF NEXT DAY



Cloud distribution: (a) Isolated: <25%, Scattered:25-50%, Broken: 51-75%, Solid:>75%, Convection Intensity: (a) Weak: Cloud Top Temperature (CTT) >-25°C, (b) Moderate: CTT: - 25°C to -40°C, (c) Intense: CTT: - 41°C to -70°C and (d) Very Intense: : Less than -70°C
 PROBABILITY OF CYCLOGENESIS (FORMATION OF DEPRESSION):NIL: 0%, LOW: 1-33%, , MODERATE: 34-66% AND HIGH: 67-100%
 This is a guidance Bulletin for WMO/ESCAP Panel Member countries. Visit respective National websites for Country specific Bulletins