



**REGIONAL SPECIALISED METEOROLOGICAL CENTRE -TROPICAL CYCLONES, NEW DELHI
TROPICAL WEATHER OUTLOOK**

DEMS-RSMC TROPICAL CYCLONES NEW DELHI DATED 02.06.2026

TROPICAL WEATHER OUTLOOK FOR THE NORTH INDIAN OCEAN (THE BAY OF BENGAL AND THE ARABIAN SEA) VALID FOR THE NEXT 168 HOURS ISSUED AT 0600 UTC OF 02.06.2026 BASED ON 0300 UTC OF 02.06.2026.

BAY OF BENGAL:

Yesterday's upper air cyclonic circulation over north east & adjoining east central Bay of Bengal persisted over the same region and extended upto 4.5 km above mean sea level at 0300 UTC of today, the 02nd June 2026.

Scattered to broken low and medium clouds with embedded intense to very intense convection over westcentral Bay of Bengal off Andhra Pradesh Coast and Andaman Sea. Scattered low and medium clouds with embedded moderate to intense convection over rest Bay of Bengal.

***PROBABILITY OF CYCLOGENESIS (FORMATION OF DEPRESSION) DURING NEXT 168 HRS)**

| 24 HOURS | 24-48 HOURS | 48-72 HOURS | 72-96 HOURS | 96-120 HOURS | 120-144 HOURS | 144-168 HOURS |
|----------|-------------|-------------|-------------|--------------|---------------|---------------|
| NIL | NIL | NIL | NIL | NIL | NIL | NIL |

***NOTE: EVERY 24HR FORECAST IS VALID UPTO 0300 UTC (0830 IST) OF NEXT DAY**

ARABIAN SEA:

Yesterday's upper air cyclonic circulation over the Southeast Arabian Sea and adjoining Lakshadweep Islands area lay over Southeast Arabian sea off south Kerala coast and extended upto 7.6 km above mean sea level tilting southwestwards with height at 0300 UTC of today, the 02nd June 2026.

Yesterday's upper air cyclonic circulation over Southwest Arabian Sea & neighbourhood between 3.1 & 5.8 km above mean sea level has become less marked at 0300 UTC of today, the 02nd June 2026.

Scattered to broken low and medium clouds with embedded intense to very intense convection over south & eastcentral Arabian Sea, Lakshadweep islands area & Maldives area.

***PROBABILITY OF CYCLOGENESIS (FORMATION OF DEPRESSION) DURING NEXT 168 HRS:**

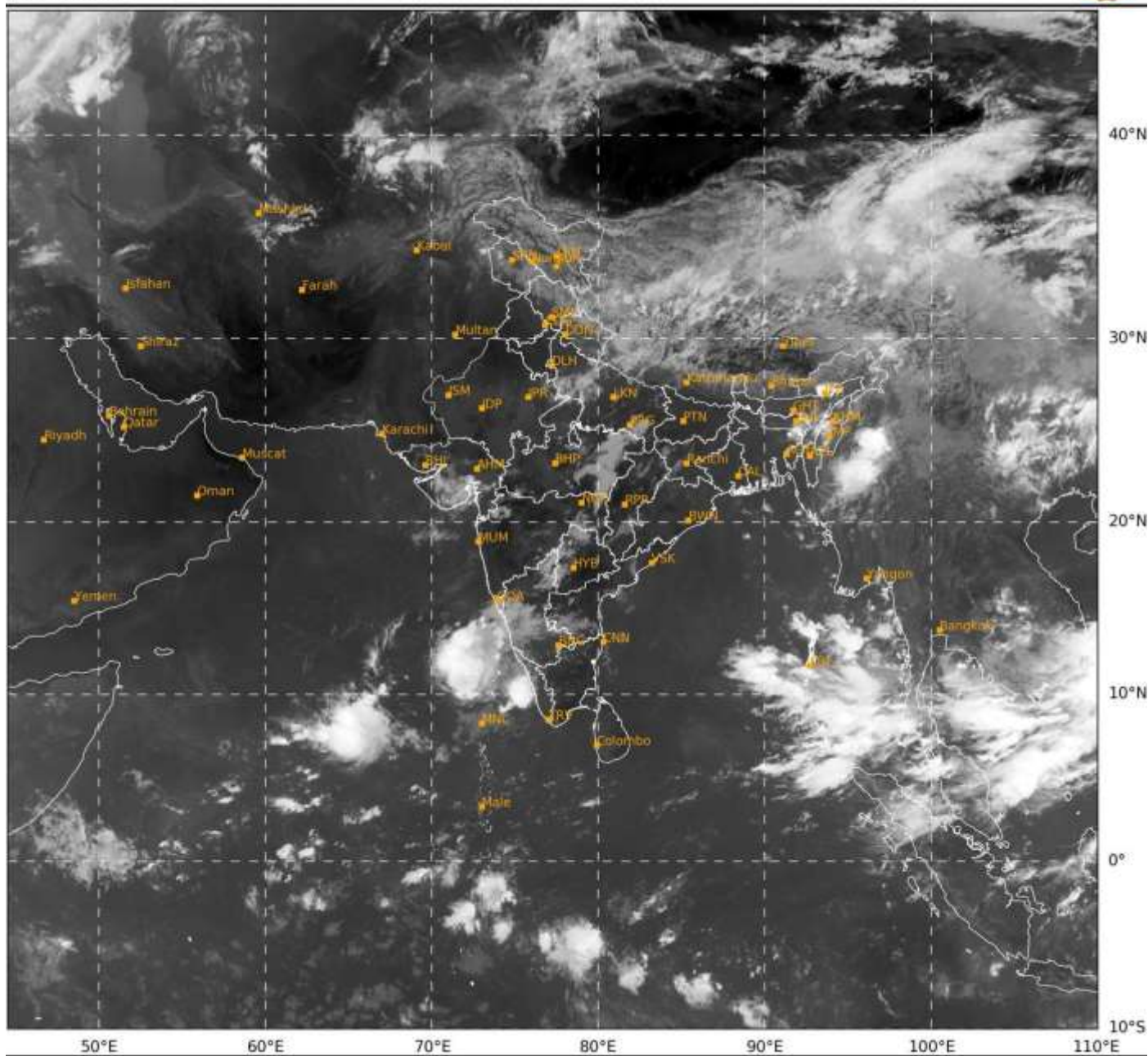
| 24 HOURS | 24-48 HOURS | 48-72 HOURS | 72-96 HOURS | 96-120 HOURS | 120-144 HOURS | 144-168 HOURS |
|----------|-------------|-------------|-------------|--------------|---------------|---------------|
| NIL | NIL | NIL | NIL | NIL | NIL | NIL |

***NOTE: EVERY 24HR FORECAST IS VALID UPTO 0300 UTC (0830 IST) OF NEXT DAY**

REMARKS: NIL

Cloud distribution: (a) Isolated: <25%, Scattered:25-50%, Broken: 51-75%, Solid:>75%, Convection Intensity: (a) Weak: Cloud Top Temperature(CTT)>-25°C, (b) Moderate: CTT:-25°Cto-40°C, (c) Intense: CTT: -41°Cto -70°C and (d) Very Intense::Less than -70°C Probability of cyclogenesis (formation of depression) :NIL:0%, LOW:1-33%, MODERATE:34-66% and HIGH:67-100%

This is a guidance Bulletin for WMO/ESCAP Panel Member countries. Visit respective National websites for Country specific Bulletins.



Cloud distribution: (a) Isolated: <25%, Scattered:25-50%, Broken: 51-75%, Solid:>75%, Convection Intensity: (a) Weak: Cloud Top Temperature(CTT)>-25°C, (b) Moderate: CTT:-25°Cto-40°C, (c) Intense: CTT: -41°Cto -70°C and (d) Very Intense::Less than -70°C Probability of cyclogenesis (formation of depression) :NIL:0%, LOW:1-33%, MODERATE:34-66% and HIGH:67-100%

This is a guidance Bulletin for WMO/ESCAP Panel Member countries. Visit respective National websites for Country specific Bulletins.