



**REGIONAL SPECIALISED METEOROLOGICAL CENTRE-TROPICAL CYCLONES, NEW DELHI
TROPICAL WEATHER OUTLOOK**

DEMS-RSMC SPECIAL TROPICAL CYCLONES NEW DELHI DATED 11.09.2022

TROPICAL WEATHER OUTLOOK FOR NORTH INDIAN OCEAN (THE BAY OF BENGAL OF BENGAL AND ARABIAN SEA) VALID FOR NEXT 120 HOURS ISSUED AT 0600 UTC OF 11.09.2022 BASED ON 0300 UTC OF 11.09.2022.

SUB: DEPRESSION OVER SOUTH ODISHA

THE DEPRESSION OVER SOUTH COASTAL ODISHA AND NEIGHBOURHOOD MOVED WEST-NORTHWESTWARDS WITH A SPEED OF 25 KMPH DURING PAST 03 HOURS AND LAY CENTERED AT 0300 UTC OF TODAY, THE 11TH SEPTEMBER 2022, OVER SOUTH ODISHA NEAR LATITUDE 19.7°N AND LONGITUDE 84.0°E, ABOUT 80 KM EAST-SOUTHEAST OF BHAWANIPATNA (43042), 110 KM WEST-NORTHWEST OF GOPALPUR (43049), 210 KM EAST-NORTHEAST OF JAGDALPUR (43041) AND 260 KM EAST-SOUTHEAST OF KANKER (42953).

IT IS LIKELY TO MOVE WEST-NORTHWESTWARDS ACROSS SOUTH ODISHA AND SOUTH CHHATTISGARH DURING NEXT 24 HOURS AND WEAKEN GRADUALLY.

ESTIMATED CENTRAL PRESSURE IS ABOUT 998 HPA AROUND SYSTEM CENTRE OVER SOUTH ODISHA. SEA CONDITION IS LIKELY TO BE ROUGH TO VERY ROUGH OVER NORTHWEST AND ADJOINING WESTCENTRAL BAY OF BENGAL AND ALONG & OFF WEST BENGAL, ODISHA & ANDHRA PRADESH COASTS ON 11 SEPT.

AS PER INSAT 3D IMAGERY AT 0300 UTC, BROKEN LOW AND MEDIUM CLOUDS WITH EMBEDDED INTENSE TO VERY INTENSE CONVECTION LAY OVER ODISHA & ADJOINING NORTH COASTAL ANDHRA PRADESH, SOUTH JHARKHAND, SOUTH GANGETIC WEST BENGAL AND NORTH & ADJOINING CENTRAL BAY OF BENGAL. MINIMUM CLOUD TOP TEMPERATURE IS MINUS 93°C.

(MONICA SHARMA)
SCIENTIST-D
RSMC NEW DELHI

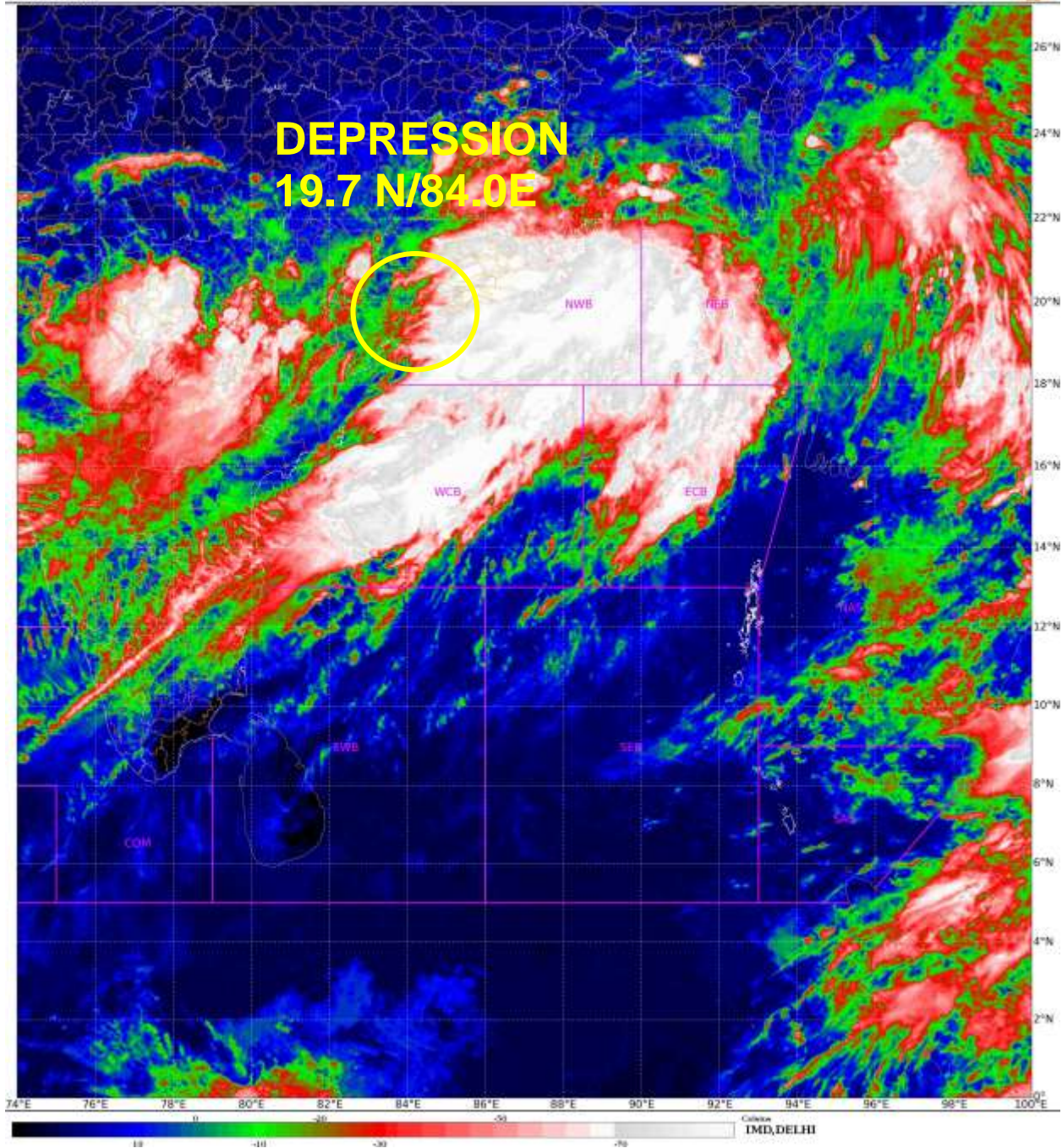


OBSERVED AND FORECAST TRACK OF DEPRESSION OVER SOUTH ODISHA BASED ON 0300 UTC OF 11th SEPTEMBER, 2022



DATE/TIME IN UTC
 IST=UTC + 0530
L: LOW PRESSURE AREA
WML: WELL MARKED LOW PRESSURE AREA
D: DEPRESSION (17-27 KT)
DD: DEEP DEPRESSION (28-33 KT)
CS: CYCLONIC STORM (34-47 KT)
SCS: SEVERE CYCLONIC STORM (48-63KT)
VSCS: VERY SEVERE CYCLONIC STORM (64-89 KT)
ESCS: EXTREMELY SEVERE CYCLONIC STORM (90-119 KT)
SuCS: SUPER CYCLONIC STORM (\geq 120 KT)

- LESS THAN 34 KT
- 34-47 KT
- \geq 48 KT
- OBSERVED TRACK
- FORECAST TRACK
- CONE OF UNCERTAINTY



FOR WIND WARNING GRAPHICS WRT MAXIMUM SUSTAINED WIND SPEED \geq 25 KNOTS AND PROBABILITY OF EXCEEDANCE GRAPHICS KINDLY VISIT RSMC WEBSITE