



**REGIONAL SPECIALISED METEOROLOGICAL CENTRE-TROPICAL CYCLONES, NEW DELHI  
TROPICAL WEATHER OUTLOOK**

**DEMS-RSMC TROPICALCYCLONES NEW DELHI DATED 25.08.2022**

**TROPICAL WEATHER OUTLOOK FOR NORTH INDIAN OCEAN (THE BAY OF BENGAL OF BENGAL OF BENGAL OF BENGAL AND ARABIAN SEA) VALID FOR NEXT 120 HOURS  
ISSUED AT 0630UTC OF 25.08.2022 BASED ON 0300 UTC OF 25.08.2022.**

**BAY OF BENGAL:**

YESTERDAY'S WELL MARKED LOW PRESSURE AREA OVER SOUTHWEST RAJASTHAN & NEIGHBOURHOOD LAY OVER SOUTHEAST PAKISTAN & ADJOINING SOUTHWEST RAJASTHAN AT 0300 UTC OF TODAY, THE 25TH AUGUST, 2022. AS PER INSAT 3D IMAGERY AT 0300 UTC, VORTEX OVER SOUTH PAKISTAN & NEIGHBOURHOOD & ASSOCIATED SCATTERED TO BROKEN LOW AND MEDIUM CLOUDS WITH INTENSE TO VERY INTENSE CONVECTION OVER SOUTH PAKISTAN & NEIGHBOURHOOD. MINIMUM CLOUD TOP TEMPERATURE IS MINUS 85 DEGREE CELSIUS.

YESTERDAY'S CYCLONIC CIRCULATION OVER NORTHWEST BAY OF BENGAL MOVED INLAND AND LAY OVER SOUTH JHARKHAND & NEIGHBOURHOOD AT 0300 UTC OF TODAY.

SCATTERED TO BROKEN LOW AND MEDIUM CLOUDS WITH EMBEDDED INTENSE TO VERY INTENSE CONVECTION OVER SOUTH BAY OF BENGAL AND GULF OF MARTABAN. SCATTERED LOW AND MEDIUM CLOUDS WITH EMBEDDED MODERATE TO INTENSE CONVECTION OVER WESTCENTRAL BAY OF BENGAL OFF SOUTH ANDHRA PRADESH COAST, ANDAMAN SEA AND TENASSERIM COAST. SCATTERED LOW AND MEDIUM CLOUDS WITH EMBEDDED ISOLATED WEAK TO MODERATE CONVECTION OVER REST AREAS OF BAY OF BENGAL.

**PROBABILITY OF CYCLOGENESIS (FORMATION OF DEPRESSION) DURING NEXT 120 HRS:**

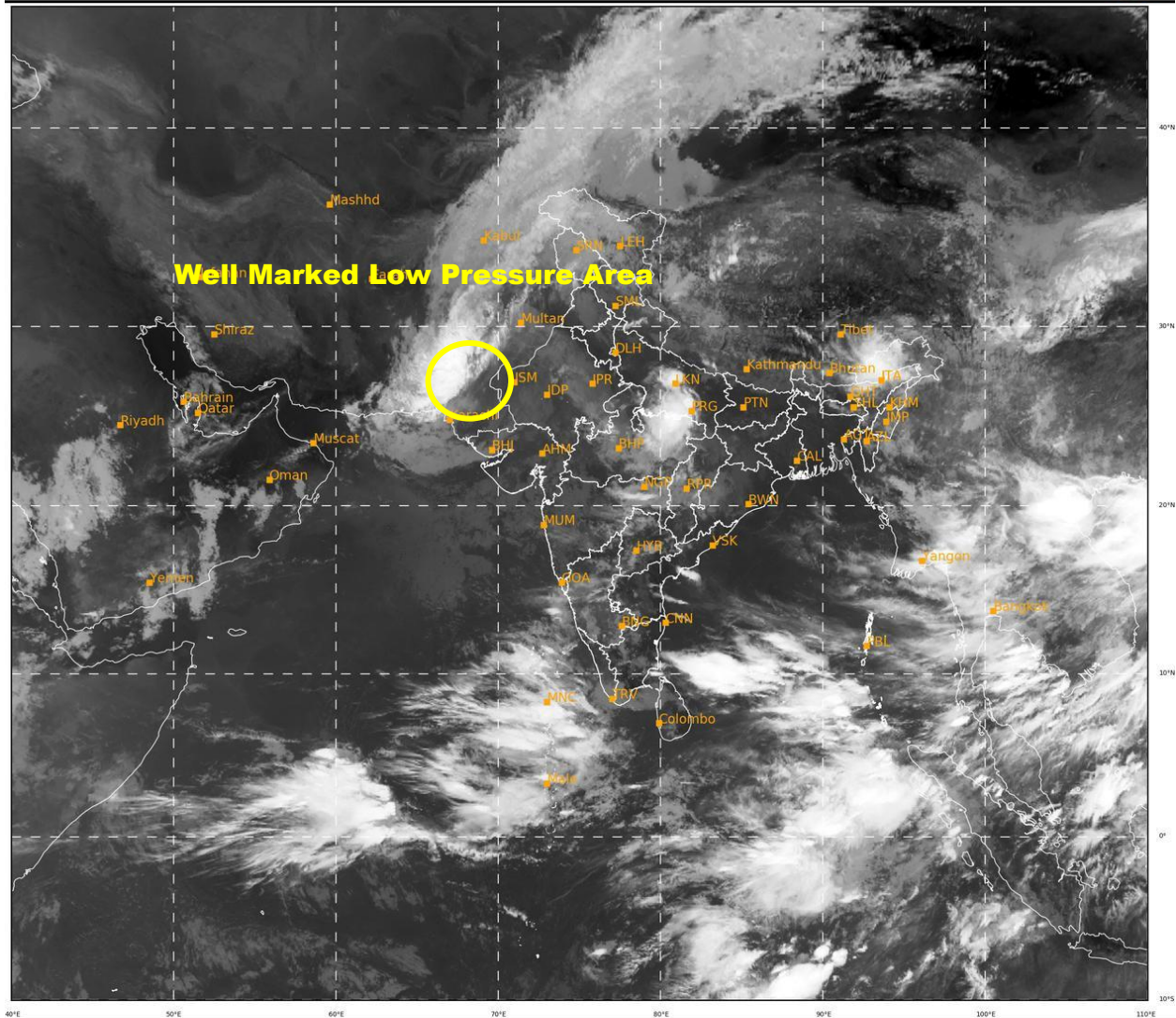
24 HOURS	24-48 HOURS	48-72 HOURS	72-96 HOURS	96-120 HOURS
NIL	NIL	NIL	NIL	NIL

**ARABIAN SEA:**

SCATTERED TO BROKEN LOW AND MEDIUM CLOUDS WITH EMBEDDED INTENSE TO VERY INTENSE CONVECTION OVER SOUTHEAST ARABIAN SEA. SCATTERED LOW AND MEDIUM CLOUDS WITH EMBEDDED MODERATE TO INTENSE CONVECTION OVER NORTHEAST ARABIAN SEA AND ADJOINING PAKISTAN COAST, EASTCENTRAL ARABIAN SEA OFF KARNATAKA COAST, LAKSHADWEEP ISLANDS AREA AND COMORIN AREA. SCATTERED LOW AND MEDIUM CLOUDS WITH EMBEDDED WEAK TO MODERATE CONVECTION OVER REST AREAS OF NORTH ARABIAN SEA AND SOUTHWEST ARABIAN SEA.

**PROBABILITY OF CYCLOGENESIS (FORMATION OF DEPRESSION) DURING NEXT 120 HRS:**

24 HOURS	24-48 HOURS	48-72 HOURS	72-96 HOURS	96-120 HOURS
NIL	NIL	NIL	NIL	NIL



411

947

IMD, DELHI