



**REGIONAL SPECIALISED METEOROLOGICAL CENTRE-TROPICAL CYCLONES, NEW DELHI  
TROPICAL WEATHER OUTLOOK**

---

**DEMS-RSMC SPECIAL TROPICAL CYCLONES NEW DELHI DATED 21.10.2023**

**FROM: RSMC –TROPICAL CYCLONES, NEW DELHI**

**TO: STORM WARNING CENTRE, NAYPYI TAW (MYANMAR)  
STORM WARNING CENTRE, BANGKOK (THAILAND)  
STORM WARNING CENTRE, COLOMBO (SRILANKA)  
STORM WARNING CENTRE, DHAKA (BANGLADESH)  
STORM WARNING CENTRE, KARACHI (PAKISTAN)  
METEOROLOGICAL OFFICE, MALE (MALDIVES)  
OMAN METEOROLOGICAL DEPARTMENT, MUSCAT (THROUGH RTH JEDDAH)  
YEMEN METEOROLOGICAL SERVICES, REPUBLIC OF YEMEN (THROUGH RTH JEDDAH)  
NATIONAL CENTRE FOR METEOROLOGY, UAE (THROUGH RTH JEDDAH)  
PRESIDENCY OF METEOROLOGY AND ENVIRONMENT, SAUDI ARABIA (THROUGH RTH JEDDAH)  
IRAN METEOROLOGICAL ORGANISATION, (THROUGH RTH JEDDAH)  
QATAR METEOROLOGICAL DEPARTMENT (THROUGH RTH JEDDAH)**

**TROPICAL CYCLONE ADVISORY NO. 07 FOR NORTH INDIAN OCEAN (THE BAY OF BENGAL AND THE ARABIAN SEA) VALID FOR NEXT 120 HOURS ISSUED AT 2100 UTC OF 21.10.2023 BASED ON 1800 UTC OF 21.10.2023.**

**SUB: (A) VERY SEVERE CYCLONIC STORM “TEJ” (PRONOUNCED AS TEJ) OVER SOUTHWEST ARABIAN SEA AND (B) WELL MARKED LOW PRESSURE AREA OVER WESTCENTRAL AND ADJOINING SOUTH BAY OF BENGAL CONCENTRATED INTO DEPRESSION OVER WESTCENTRAL BAY OF BENGAL**

**(A) VERY SEVERE CYCLONIC STORM “TEJ” (PRONOUNCED AS TEJ) OVER SOUTHWEST ARABIAN SEA**

THE VERY SEVERE CYCLONIC STORM “TEJ” (PRONOUNCED AS TEJ) OVER SOUTHWEST ARABIAN SEA MOVED NORTH-WESTWARDS WITH A SPEED OF 20 KMPH DURING PAST 6 HOURS, AND LAY CENTERED AT 2330 HOURS IST OF 21ST OCTOBER OVER THE SAME REGION, NEAR LATITUDE 11.4°N AND LONGITUDE 56.6°E ABOUT 330 KM EAST-SOUTHEAST OF SOCOTRA (YEMEN, 41494), 690 KM SOUTH-SOUTHEAST OF SALALAH (OMAN, 41316) AND 720 KM SOUTHEAST OF AL GHAI DAH (YEMEN, 41398).

IT IS VERY LIKELY TO INTENSIFY FURTHER INTO AN EXTREMELY SEVERE CYCLONIC STORM IN THE FORENOON OF 22ND OCTOBER. IT IS VERY LIKELY TO MOVE NORTHWESTWARDS TILL 0000 UTC OF 24<sup>TH</sup> OCTOBER & THEN NORTH-NORTHWESTWARDS. IT IS LIKELY TO CROSS YEMEN-OMAN COASTS BETWEEN AL GHAI DAH (YEMEN, 41398) & SALALAH (OMAN, 41316) BY 1200 UTC OF 24<sup>TH</sup> OCTOBER.

FORECAST TRACK AND INTENSITY OF THE SYSTEM IS GIVEN BELOW:

DATE/TIME(IST)	POSITION (LAT. <sup>0</sup> N/LONG. <sup>0</sup> E)	MAXIMUM SUSTAINED SURFACE WIND SPEED (KMPH)	CATEGORY OF CYCLONIC DISTURBANCE
21.10.23/1800	11.3/56.6	135-145 GUSTING TO 155	VERY SEVERE CYCLONIC STORM
22.10.23/0000	11.8/56.1	150-160 GUSTING TO 175	VERY SEVERE CYCLONIC STORM
22.10.23/0600	12.3/55.6	165-175 GUSTING TO 195	EXTREMELY SEVERE CYCLONIC STORM
22.10.23/1200	12.8/55.1	180-190 GUSTING TO 210	EXTREMELY SEVERE CYCLONIC STORM
22.10.23/1800	13.5/54.4	180-190 GUSTING TO 210	EXTREMELY SEVERE CYCLONIC STORM
23.10.23/0600	14.3/53.7	150-160 GUSTING TO 175	VERY SEVERE CYCLONIC STORM
23.10.23/1800	15.0/53.1	135-145 GUSTING TO 155	VERY SEVERE CYCLONIC STORM
24.10.23/0600	15.7/52.6	105-115 GUSTING TO 125	SEVERE CYCLONIC STORM
24.10.23/1800	16.8/52.1	90-100 GUSTING TO 110	CYCLONIC STORM
25.10.23/0600	17.7/51.7	50-60 GUSTING TO 70	DEPRESSION

AS PER INSAT 3D IMAGERY, THE ASSOCIATED CLOUD MASS HAS FURTHER INTENSIFIED RAPIDLY DURING LAST 03 HRS. SATELLITE IMAGERY DEPICTS EYE IS CLEARLY SEEN IN INFRARED IMAGERY. INTENSITY OF THE SYSTEM IS CHARACTERISED AS T 4.5. ASSOCIATED SCATTERED TO BROKEN LOW AND MEDIUM CLOUDS WITH EMBEDDED INTENSE TO VERY INTENSE CONVECTION LAY OVER SOUTHWEST & ADJOINING WESTCENTRAL ARABIAN SEA BETWEEN LAT 8.0N TO 16.0N LONG 53.0E TO 63.0E. MINIMUM CLOUD TOP TEMPERATURE IS MINUS 93<sup>0</sup>C. EYE TEMPERATURE IS MINUS 93<sup>0</sup>C. MULTISATELLITE WINDS INDICATE STRONGER WINDS IN NORTHEAST & ADJOINING NORTHWEST SECTOR. TOTAL PRECIPITABLE WATER IMAGERY INDICATES WARM MOIST AIR INCURSION INTO THE SYSTEM CORE.

ASSOCIATED MAXIMUM SUSTAINED WIND SPEED IS 75 KNOTS GUSTING TO 85 KNOTS. THE ESTIMATED CENTRAL PRESSURE IS 980 HPA.

#### SEA CONDITION:

- **SOUTHWEST ARABIAN SEA:**

**PHENOMENAL** SEA CONDITION IS PREVAILING AND WILL CONTINUE TILL 0000 UTC OF 23<sup>RD</sup> OCTOBER. IT IS LIKELY TO IMPROVE GRADUALLY BECOMING **VERY HIGH** FROM 0000 UTC OF 24<sup>TH</sup> AND CONTINUE TILL 0000 UTC OF 25<sup>TH</sup>. THEREAFTER, IT WOULD IMPROVE GRADUALLY.

- **WESTCENTRAL ARABIAN SEA:**

**PHENOMENAL** SEA CONDITION IS PREVAILING AND WILL CONTINUE TILL 1200 UTC OF 24<sup>TH</sup> OCTOBER. IT WOULD IMPROVE GRADUALLY THEREAFTER BECOMING **VERY HIGH TO HIGH** FROM 1800 UTC OF 24<sup>TH</sup>. THEREAFTER, IT WOULD IMPROVE GRADUALLY.

**(B) WELL MARKED LOW PRESSURE AREA CONCENTRATED INTO A DEPRESSION OVER WESTCENTRAL BAY OF BENGAL**

THE WELL MARKED LOW PRESSURE AREA OVER WESTCENTRAL AND ADJOINING SOUTH BAY OF BENGAL MOVED SLOWLY NORTHWESTWARDS CONCENTRATED INTO A DEPRESSION AND LAY CENTERED AT 1800 UTC OF 21ST OCTOBER 2023 OVER WESTCENTRAL BAY OF BENGAL, NEAR LATITUDE 14.7°N AND LONGITUDE 86.4°E ABOUT 620 KM SOUTH OF PARADIP (ODISHA, 42976), 780 KM SOUTH OF DIGHA (WEST BENGAL, 42901), AND 900 KM SOUTH-SOUTHWEST OF KHEPUPARA (BANGLADESH, 41984).

IT IS LIKELY TO FURTHER INTENSIFY INTO A DEEP DEPRESSION DURING NEXT 24 HOURS. IT IS LIKELY TO MOVE NORTHWESTWARDS DURING NEXT 12 HOURS, THEN RECURVE AND MOVE NORTH-NORTHEASTWARDS DURING SUBSEQUENT 3 DAYS TOWARDS BANGLADESH AND ADJOINING WEST BENGAL COASTS.

AS PER INSAT 3D IMAGERY, INTENSITY OF THE SYSTEM IS CHARACTERISED AS T 1.5. ASSOCIATED SCATTERED TO BROKEN LOW AND MEDIUM CLOUDS WITH EMBEDDED INTENSE TO VERY INTENSE CONVECTION LAY OVER CENTRAL BAY OF BENGAL BETWEEN LAT 13.0N TO 18.0N LONG 84.0E TO 90.0E. MINIMUM CLOUD TOP TEMPRATURE IS MINUS 93°C. MULTISATELLITE WINDS INDICATE STRONGER WINDS IN NORTHEAST & ADJOINING NORTHWEST SECTOR. TOTAL PRECIPITABLE WATER IMAGERY INDICATES WARM MOIST AIR INCURSION INTO THE SYSTEM CORE.

ASSOCIATED MAXIMUM SUSTAINED WIND SPEED IS 25 KNOTS GUSTING TO 35 KNOTS. THE ESTIMATED CENTRAL PRESSURE IS 1006 HPA.

FORECAST TRACK AND INTENSITY OF THE SYSTEM IS GIVEN BELOW:

DATE/TIME(IST)	POSITION (LAT. <sup>0</sup> N/LONG. <sup>0</sup> E)	MAXIMUM SUSTAINED SURFACE WIND SPEED (KMPH)	CATEGORY OF CYCLONIC DISTURBANCE
21.10.23/1800	14.7/86.4	40-50 GUSTING TO 60	DEPRESSION
22.10.23/0600	15.1/85.8	40-50 GUSTING TO 60	DEPRESSION
22.10.23/1800	15.6/85.6	50-60 GUSTING TO 70	DEEP DEPRESSION
23.10.23/0600	16.5/85.9	50-60 GUSTING TO 70	DEEP DEPRESSION
23.10.23/1800	17.8/86.6	60-70 GUSTING TO 80	CYCLONIC STORM
24.10.23/0600	19.0/87.5	60-70 GUSTING TO 80	CYCLONIC STORM
24.10.23/1800	19.9/88.4	60-70 GUSTING TO 80	CYCLONIC STORM

**REMARKS:**

**ARABIAN SEA:**

MADDEN JULIAN OSCILLATION INDEX IS IN PHASE 8 WITH AMPLITUDE LESS THAN 1. IT WOULD CONTINUE IN SAME PHASE DURING NEXT 5 DAYS. SEA SURFACE TEMPERATURE IS 28-30°C OVER SOUTH & WESTCENTRAL ARABIAN SEA. THE TROPICAL CYCLONE HEAT POTENTIAL IS AROUND 100 KJ/CM<sup>2</sup> OVER SOUTHWEST ARABIAN SEA NEAR THE SYSTEM LOCATION. IT WOULD DECREASE GRADUALLY BECOMING 30-40 KJ/CM<sup>2</sup> OVER WESTCENTRAL ARABIAN SEA & ALONG & OFF OMAN-YEMEN COASTS.

THE LOW LEVEL POSITIVE IS AROUND  $150 \times 10^{-6} \text{S}^{-1}$  TO THE SOUTHWEST OF SYSTEM CENTER WITH VERTICAL EXTENSION UPTO 200 HPA LEVEL. THE POSITIVE LOW LEVEL CONVERGENCE IS ABOUT  $20 \times 10^{-5} \text{S}^{-1}$  TO THE SOUTHWEST OF SYSTEM AREA. POSITIVE UPPER LEVEL DIVERGENCE IS ABOUT  $30 \times 10^{-5} \text{S}^{-1}$  TO THE SOUTHWEST OF THE SYSTEM AREA. STRONG OUTFLOW IS SEEN IN UPPER LEVELS. WIND SHEAR IS MODERATE (15—20 KNOTS) OVER SYSTEM AREA AND ALONG THE EXPECTED TRACK AND IT IS MODERATE TO HIGH OVER WESTERN PARTS OF WESTCENTRAL ARABIAN SEA. UPPER TROPOSPHERIC RIDGE RUNS NEAR  $14^{\circ}\text{N}$  IN ASSOCIATION WITH ANTICYCLONIC CIRCULATION OVER SOUTHEAST & ADJOINING EASTCENTRAL ARABIAN SEA. AS SUCH, TC TEJ LIES ON THE PERIPHERY OF THIS ANTICYCLONE AND HENCE, ACCORDINGLY SHOWS WEST-NORTHWESTWARDS MOVEMENT. AS IT MOVES AWAY FROM THIS ANTICYCLONE, ALONG THE PERIPHERY, IT'S DIRECTION OF MOVEMENT WOULD GRADUALLY CHANGE FROM WEST-NORTHWESTWARDS TO NORTHWESTWARDS TO NORTH-NORTHWESTWARDS LEADING TO LANDFALL OVER YEMEN AND ADJOINING OMAN.

FURTHER DURING NEXT 24 HOURS, HIGHER SST, HIGHER OCEAN THERMAL ENERGY, LOW-MODERATE VERTICAL WIND SHEAR, STRONG OUTFLOW IN UPPER LEVELS WOULD MAKE CONDITIONS FAVOURABLE FOR RAPID INTENSIFICATION. TEMPORARILY, IT MAY ALSO INTENSIFY INTO AN EXTREMELY SEVERE CYCLONIC STORM OVER WESTCENTRAL ARABIAN SEA WITH WIND SPEED REACHING UPTO 90-95 KNOTS AROUND  $22^{\text{ND}}$  /0600 UTC. AS IT MOVES CLOSER TO COAST, IT WILL ENCOUNTER DRY AIR INCURSION AND COLDER SST AND HENCE MAY EXHIBIT WEAKENING PRIOR TO LANDFALL.

THE MULTI MODEL GUIDANCE IS INDICATING THE SYSTEM TO MOVE NORTHWESTWARDS TILL 0000 UTC OF  $24^{\text{TH}}$  & THEN NORTH-NORTHWESTWARDS. MOST OF THE MODELS ARE INDICATING THE SYSTEM TO CROSS OMAN – YEMEN COASTS (ECMWF, UKMO, IMD HWRF TOWARDS YEMEN AND IMD MME, NCEP, CMC, NCUM, IMD GFS, SLIGHTLY TOWARDS OMAN). BUT THERE IS CONSENSUS THAT CROSSING WOULD BE OVER YEMEN & ADJOINING OMAN COASTS. MODELS ARE ALSO SUGGESTING SLIGHT WEAKENING PRIOR TO LANDFALL. THIS IS SUPPORTED BY DECREASING OCEAN THERMAL ENERGY AND INCREASING WIND SHEAR OVER WESTCENTRAL ARABIAN SEA ALONG & OFF OMAN-YEMEN COASTS.

IN VIEW OF ABOVE, THE VERY SEVERE CYCLONIC STORM “TEJ” (PRONOUNCED AS TEJ) IS VERY LIKELY TO INTENSIFY FURTHER INTO AN EXTREMELY SEVERE CYCLONIC STORM IN THE FORENOON OF  $22^{\text{ND}}$  OCTOBER. IT IS VERY LIKELY TO MOVE NORTHWESTWARDS TILL 0000 UTC OF  $24^{\text{TH}}$  OCTOBER & THEN NORTH-NORTHWESTWARDS. IT IS LIKELY TO CROSS YEMEN-OMAN COASTS BETWEEN AL GHAIHAH (YEMEN) & SALALAH (OMAN, 41398) BY 1200 UTC OF  $24^{\text{TH}}$  OCTOBER.

#### **BAY OF BENGAL:**

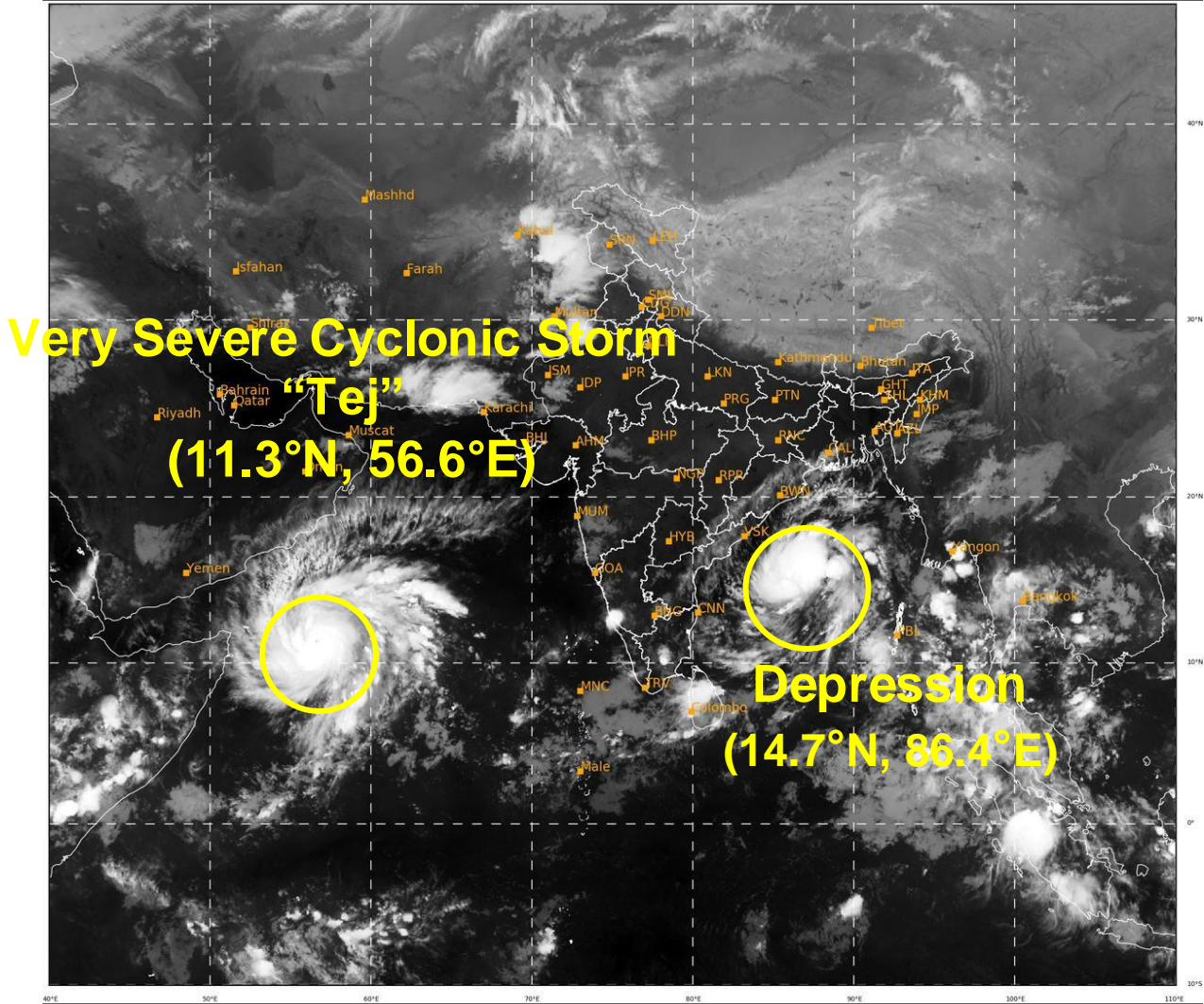
MJO IS NOT SUPPORTIVE FOR CYCLOGENESIS OVER BOB. HOWEVER, WARM SST AND LOW TO MODERATE VERTICAL WIND SHEAR OVER SOUTH & CENTRAL BOB ARE LIKELY TO SUPPORT THE DEVELOPMENT OF DEEP DEPRESSION OVER BOB.

THE GLOBAL MODELS ARE IN AGREEMENT THAT THE LOW PRESSURE AREA OVER SOUTHEAST BAY OF BENGAL IS LIKELY TO INTENSIFY FURTHER INTO A DEEP DEPRESSION DURING NEXT 24 HOURS. AND FURTHER INTENSIFY INTO A CYCLONIC STORM AROUND 1800 UTC OF 23<sup>RD</sup> OCTOBER 2023.

THERE IS CONSENSUS AMONG VARIOUS MODELS WRT MOVEMENT TOWARDS BANGLADESH. MOST OF THE MODELS ARE INDICATING INTENSIFICATION UPTO DEEP DEPRESSION STAGE, HOWEVER CMC AND IMDGEFS IS INDICATING HIGHER INTENSITY.

CONSIDERING ALL THESE, THE DEPRESSION OVER WESTCENTRAL BAY OF BENGAL IS LIKELY TO FURTHER INTENSIFY INTO A DEEP DEPRESSION DURING NEXT 24 HOURS. IT IS LIKELY TO MOVE NORTHWESTWARDS DURING NEXT 12 HOURS, THEN RECURVE AND MOVE NORTH-NORTHEASTWARDS DURING SUBSEQUENT 3 DAYS TOWARDS BANGLADESH AND ADJOINING WEST BENGAL COASTS.

(ARULALAN T)  
SCIENTIST-C  
RSMC, NEW DELHI



525

938

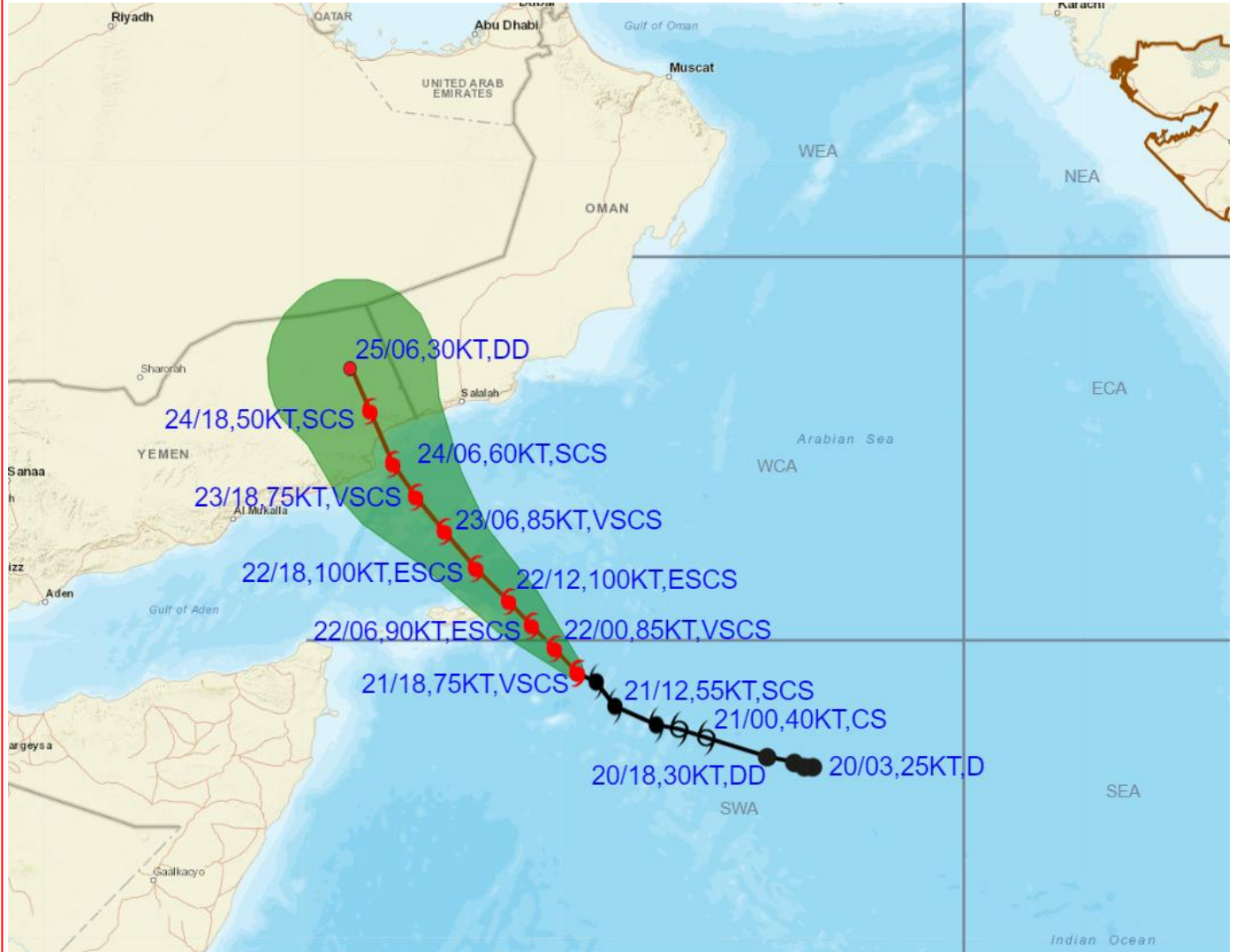
IMD,DELHI

Cloud distribution: (a) Isolated: <25%, Scattered:25-50%, Broken: 51-75%, Solid>75%, Convection Intensity: (a) Weak: Cloud Top Temperature (CTT) >-25°C, (b) Moderate: CTT: - 25°C to -40°C, (c) Intense: CTT: - 41°C to -70°C and (d) Very Intense: : Less than -70°C  
PROBABILITY OF CYCLOGENESIS (FORMATION OF DEPRESSION):NIL: 0%, LOW: 1-33% , MODERATE: 34-66% AND HIGH: 67-100%  
This is a guidance Bulletin for WMO/ESCAP Panel Member countries. Visit respective National websites for Country specific Bul letins





**OBSERVED AND FORECAST TRACK ALONGWITH CONE OF UNCERTAINTY OF VERY SEVERE CYCLONIC STORM "TEJ" OVER SOUTHWEST ARABIAN SEA BASED ON 1800 UTC (2330 IST) OF 21st OCTOBER 2023.**



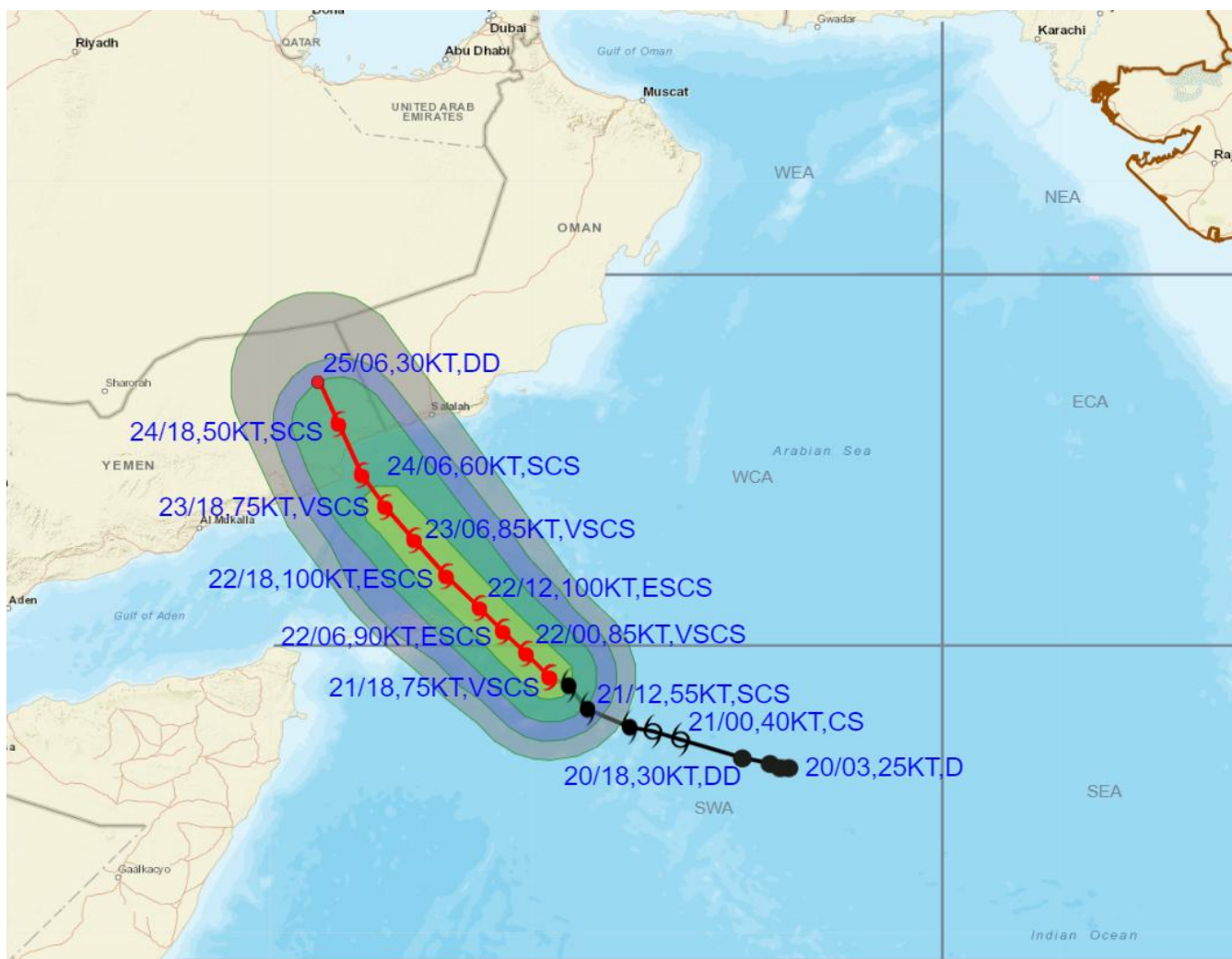
DATE/TIME IN UTC  
 IST=UTC + 0530  
 L: LOW PRESSURE AREA  
 WML: WELL MARKED LOW PRESSURE AREA  
 D: DEPRESSION (17-27 KT)  
 DD: DEEP DEPRESSION (28-33 KT)  
 CS: CYCLONIC STORM (34-47 KT)  
 SCS: SEVERE CYCLONIC STORM (48-63KT)  
 VSCS: VERY SEVERE CYCLONIC STORM (64-89 KT)  
 ESCS: EXTREMELY SEVERE CYCLONIC STORM (90-119 KT)  
 SuCS: SUPER CYCLONIC STORM ( $\geq$  120 KT)

- LESS THAN 34 KT
- 34-47 KT
- $\geq$  48 KT
- OBSERVED TRACK
- FORECAST TRACK
- CONE OF UNCERTAINTY

Cloud distribution: (a) Isolated: <25%, Scattered:25-50%, Broken: 51-75%, Solid:>75%, Convection Intensity: (a) Weak: Cloud Top Temperature (CTT) >-25°C, (b) Moderate: CTT: - 25°C to -40°C, (c) Intense: CTT: - 41°C to -70°C and (d) Very Intense: : Less than -70°C  
 PROBABILITY OF CYCLOGENESIS (FORMATION OF DEPRESSION):NIL: 0%, LOW: 1-33% , MODERATE: 34-66% AND HIGH: 67-100%  
 This is a guidance Bulletin for WMO/ESCAP Panel Member countries. Visit respective National websites for Country specific Bul letins



## OBSERVED AND FORECAST TRACK ALONGWITH QUADRANT WIND DISTRIBUTION OF VERY SEVERE CYCLONIC STORM "TEJ" OVER SOUTHWEST ARABIAN SEA BASED ON 1800 UTC (2330 IST) OF 21st OCTOBER 2023.



DATE/TIME IN UTC  
IST=UTC + 0530

L: LOW PRESSURE AREA  
WML: WELL MARKED LOW PRESSURE AREA  
D: DEPRESSION (17-27 KT)  
DD: DEEP DEPRESSION (28-33 KT)  
CS: CYCLONIC STORM (34-47 KT)  
SCS: SEVERE CYCLONIC STORM (48-63KT)  
VSCS: VERY SEVERE CYCLONIC STORM (64-89 KT)  
ESCS: EXTREMELY SEVERE CYCLONIC STORM (90-119 KT)  
SuCS: SUPER CYCLONIC STORM (≥ 120 KT)

● LESS THAN 34 KT  
⊖ 34-47 KT  
⊖ ≥ 48 KT  
— OBSERVED TRACK  
— FORECAST TRACK  
● CONE OF UNCERTAINTY  
AREA OF MAXIMUM SUSTAINED WIND SPEED:  
■ 28-33 KT (52-61 KMPH)  
■ 34-49 KT (62-91 KMPH)  
■ 50-63 KT (92-117 KMPH)  
■ ≥ 64 KT (≥118 KMPH)

### IMPACT OVER THE SEA

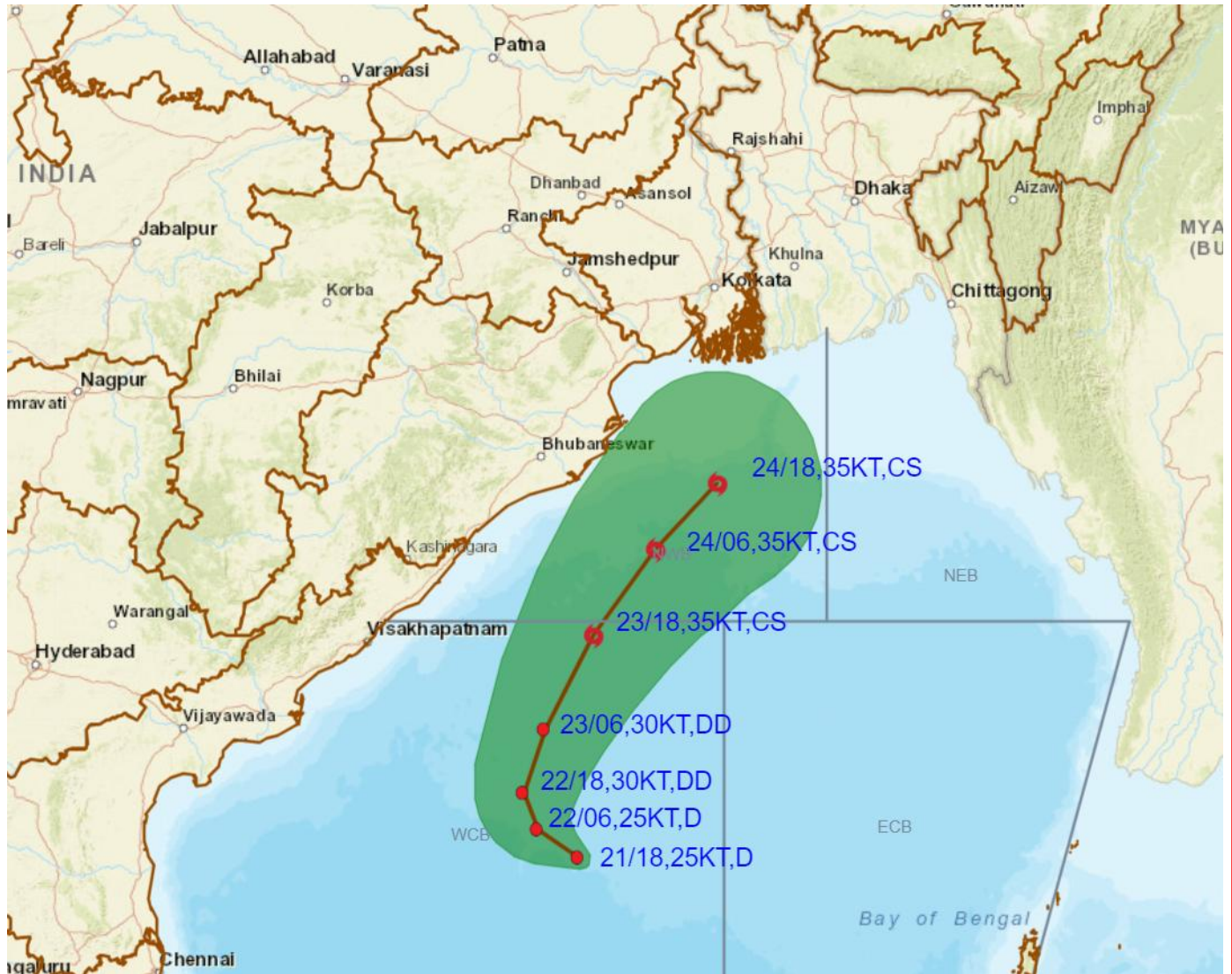
MSW (knot/kmph)	Impact	Action
28-33 (52-61)	Very rough seas	Total suspension of fishing operations
34-49 (62-91)	High to very high seas	Total suspension of fishing operations
50-63 (92-117)	Very high seas	Total suspension of fishing operations
≥ 64 (≥118)	Phenomenal	Total suspension of fishing operations

Cloud distribution: (a) Isolated: <25%, Scattered:25-50%, Broken: 51-75%, Solid>75%, Convection Intensity: (a) Weak: Cloud Top Temperature (CTT) >-25°C, (b) Moderate: CTT: - 25°C to -40°C, (c) Intense: CTT: - 41°C to -70°C and (d) Very Intense: : Less than -70°C  
PROBABILITY OF CYCLOGENESIS (FORMATION OF DEPRESSION):NIL: 0%, LOW: 1-33% , MODERATE: 34-66% AND HIGH: 67-100%  
This is a guidance Bulletin for WMO/ESCAP Panel Member countries. Visit respective National websites for Country specific Bul letins





**OBSERVED AND FORECAST TRACK ALONGWITH CONE OF UNCERTAINTY OF DEPRESSION OVER WESTCENTRAL BAY OF BENGAL BASED ON 1800 UTC (2330 IST) OF 21<sup>ST</sup> OCTOBER 2023.**

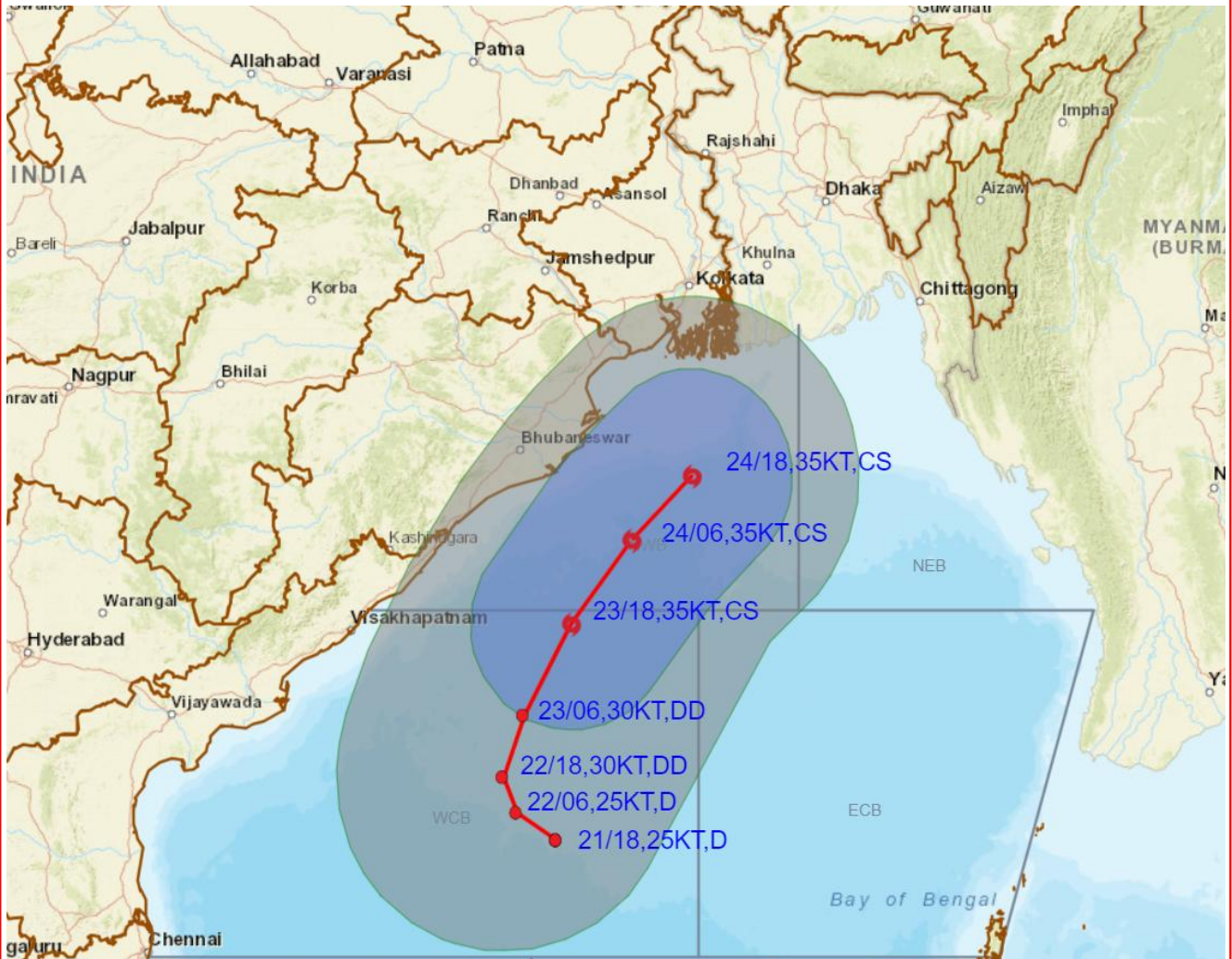


DATE/TIME IN UTC  
 IST=UTC + 0530  
 L: LOW PRESSURE AREA  
 WML: WELL MARKED LOW PRESSURE AREA  
 D: DEPRESSION (17-27 KT)  
 DD: DEEP DEPRESSION (28-33 KT)  
 CS: CYCLONIC STORM (34-47 KT)  
 SCS: SEVERE CYCLONIC STORM (48-63KT)  
 VSCS: VERY SEVERE CYCLONIC STORM (64-89 KT)  
 ESCS: EXTREMELY SEVERE CYCLONIC STORM (90-119 KT)  
 SuCS: SUPER CYCLONIC STORM ( $\geq$  120 KT)

- LESS THAN 34 KT
- 34-47 KT
- $\geq$  48 KT
- OBSERVED TRACK
- FORECAST TRACK
- CONE OF UNCERTAINTY



## OBSERVED AND FORECAST TRACK ALONGWITH QUADRANT WIND DISTRIBUTION OF DEPRESSION OVER WESTCENTRAL BAY OF BENGAL BASED ON 1800 UTC (2330 IST) OF 21<sup>ST</sup> OCTOBER 2023.



**DATE/TIME IN UTC**

IST=UTC +0530

L: LOW PRESSURE AREA

WML: WELL MARKED LOW PRESSURE AREA

D: DEPRESSION (17-27 KT)

DD: DEEP DEPRESSION (28-33 KT)

CS: CYCLONIC STORM (34-47 KT)

SCS: SEVERE CYCLONIC STORM (48-63KT)

VSCS: VERY SEVERE CYCLONIC STORM (64-89 KT)

ESCS: EXTREMELY SEVERE CYCLONIC STORM (90-119 KT)

SuCS: SUPER CYCLONIC STORM (≥ 120 KT)

● LESS THAN 34 KT

○ 34.47 KT

● ≥ 48 KT

— OBSERVED TRACK

— FORECAST TRACK

▲ CONE OF UNCERTAINTY

AREA OF MAXIMUM SUSTAINED WIND SPEED:

■ 28-33 KT (52-61 KMPH)

■ 34-49 KT (62-91 KMPH)

■ 50-63 KT (92-117 KMPH)

■ ≥ 64 KT (≥118 KMPH)

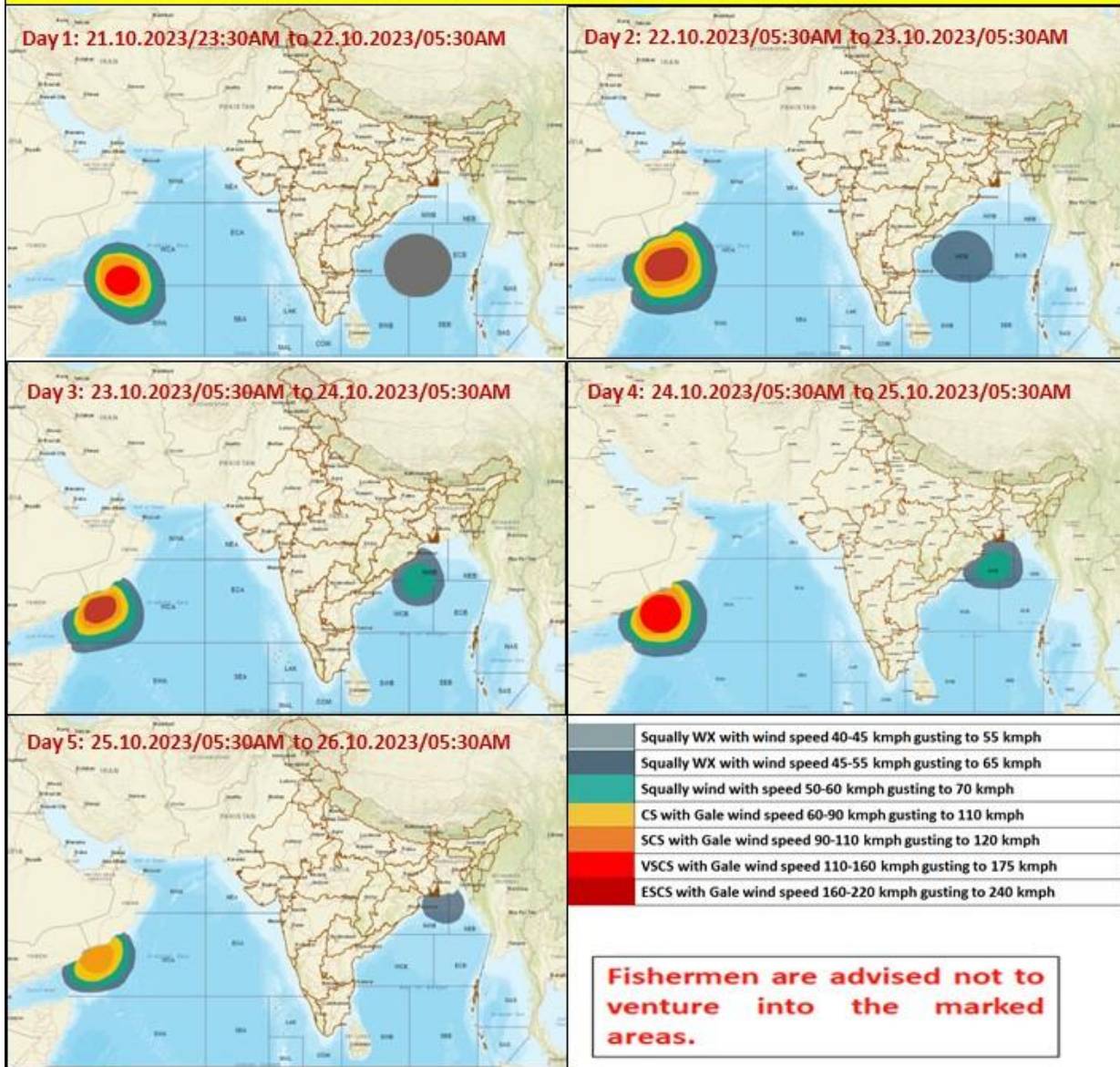
**IMPACT OVER THE SEA**

MSW (knot/kmph)	Impact	Action
28-33 (52-61)	Very rough seas	Total suspension of fishing operations
34-49 (62-91)	High to very high seas	Total suspension of fishing operations
50-63 (92-117)	Very high seas	Total suspension of fishing operations
≥ 64 (≥118)	Phenomenal	Total suspension of fishing operations

Cloud distribution: (a) Isolated: <25%, Scattered:25-50%, Broken: 51-75%, Solid:>75%, Convection Intensity: (a) Weak: Cloud Top Temperature (CTT) >-25°C, (b) Moderate: CTT: - 25°C to -40°C, (c) Intense: CTT: - 41°C to -70°C and (d) Very Intense: : Less than -70°C  
**PROBABILITY OF CYCLOGENESIS (FORMATION OF DEPRESSION):** NIL: 0%, LOW: 1-33% , MODERATE: 34-66% AND HIGH: 67-100%  
 This is a guidance Bulletin for WMO/ESCAP Panel Member countries. Visit respective National websites for Country specific Bul letins



## Fishermen warning graphics



Cloud distribution: (a) Isolated: <25%, Scattered:25-50%, Broken: 51-75%, Solid:>75%, Convection Intensity: (a) Weak: Cloud Top Temperature (CTT) >-25°C, (b) Moderate: CTT: - 25°C to -40°C, (c) Intense: CTT: - 41°C to -70°C and (d) Very Intense: : Less than -70°C  
 PROBABILITY OF CYCLOGENESIS (FORMATION OF DEPRESSION):NIL: 0%, LOW: 1-33% , MODERATE: 34-66% AND HIGH: 67-100%  
 This is a guidance Bulletin for WMO/ESCAP Panel Member countries. Visit respective National websites for Country specific Bul letins