



**REGIONAL SPECIALISED METEOROLOGICAL CENTRE-TROPICAL CYCLONES, NEW DELHI
TROPICAL WEATHER OUTLOOK**

DEMS-RSMC TROPICAL CYCLONES NEW DELHI DATED 16.04.2025

TROPICAL WEATHER OUTLOOK FOR THE NORTH INDIAN OCEAN (THE BAY OF BENGAL AND THE ARABIAN SEA) VALID FOR THE NEXT 168 HOURS ISSUED AT 0600 UTC OF 16.04.2025 BASED ON 0300 UTC OF 16.04.2025.

BAY OF BENGAL:

Yesterday's upper air cyclonic circulation over southwest Bay of Bengal & adjoining Tamil Nadu at 1.5 km above mean sea level became less marked at 0300 UTC of today, the 16th April, 2025.

Scattered to broken low and medium clouds with embedded intense convection lay over southeast Bay of Bengal, Andaman Sea. Scattered low and medium clouds with embedded isolated weak to moderate convection lay over southwest & central Bay of Bengal.

***PROBABILITY OF CYCLOGENESIS (FORMATION OF DEPRESSION) DURING NEXT 168 HRS:**

24 HOURS	24-48 HOURS	48-72 HOURS	72-96 HOURS	96-120 HOURS	120-144 HOURS	144-168 HOURS
NIL	NIL	NIL	NIL	NIL	NIL	NIL

***NOTE: EVERY 24HR FORECAST IS VALID UPTO 0300 UTC (0830 IST) OF NEXT DAY**

ARABIAN SEA:

Yesterday's upper air cyclonic circulation over Gulf of Mannar & neighbourhood merged with the trough that runs from cyclonic circulation over southwest Rajasthan & neighbourhood to Gulf of Mannar across East Rajasthan, West Madhya Pradesh, Marathwada, Interior Karnataka, Rayalaseema & Tamil Nadu at 0.9 km above mean sea level at 0300 UTC of today, the 16th April, 2025.

No significant clouds over the region.

***PROBABILITY OF CYCLOGENESIS (FORMATION OF DEPRESSION) DURING NEXT 168 HRS:**

24 HOURS	24-48 HOURS	48-72 HOURS	72-96 HOURS	96-120 HOURS	120-144 HOURS	144-168 HOURS
NIL	NIL	NIL	NIL	NIL	NIL	NIL

***NOTE: EVERY 24HR FORECAST IS VALID UPTO 0300 UTC (0830 IST) OF NEXT DAY**

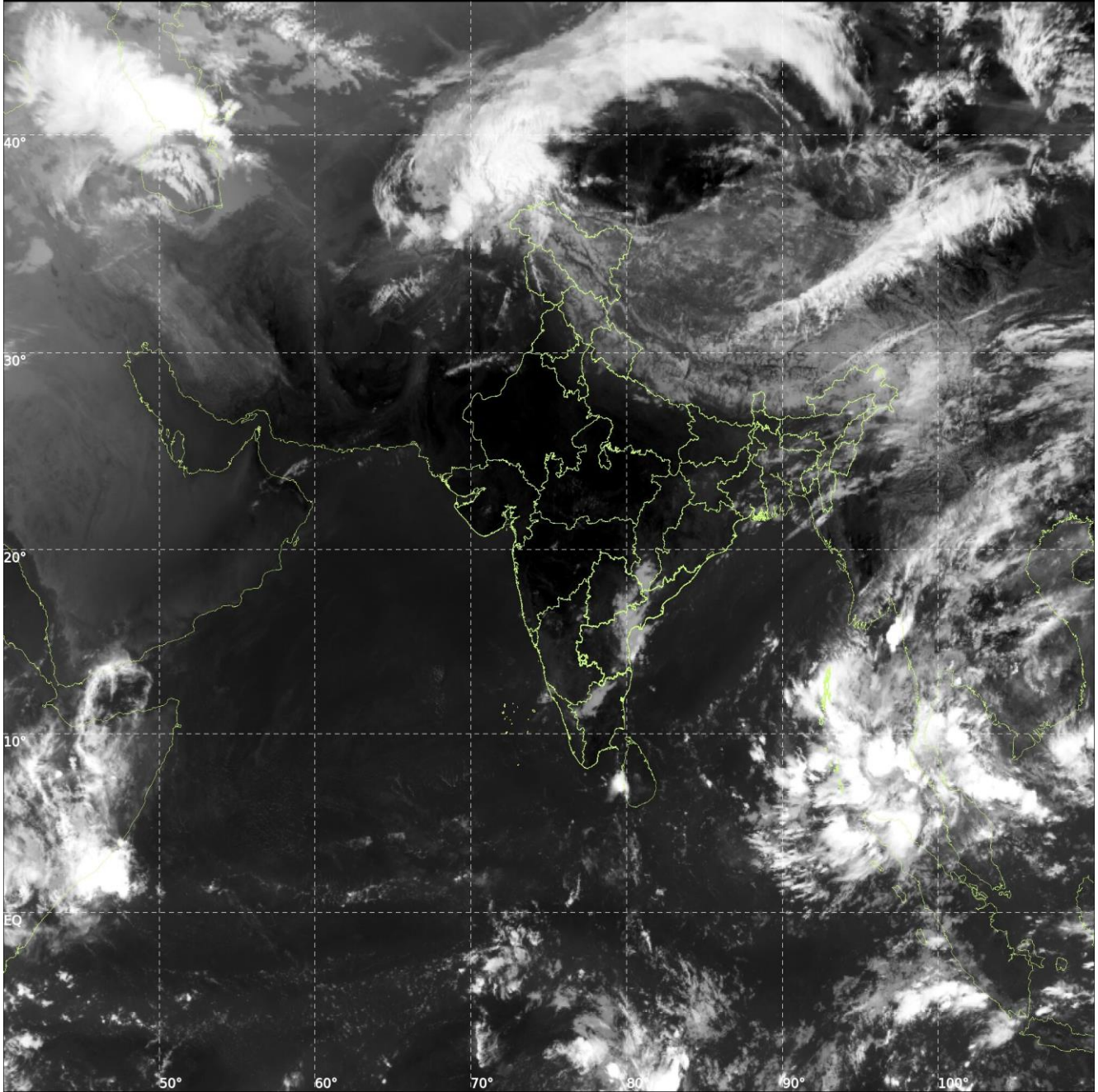
REMARKS: NIL



INSAT-3DS IMG, Thermal Infrared1 Count @ 10.83 μm
GMT:16-04-2025/(0300-0327) IST:16-04-2025/(0830-0857)
LIC MERCATOR (LINEAR STRETCH: 1%)

442

895



Cloud distribution: (a) Isolated: <25%, Scattered:25-50%, Broken: 51-75%, Solid:>75%, Convection Intensity: (a) Weak: Cloud Top Temperature(CTT)>-25°C,(b)Moderate:CTT:-25°Cto-40°C,(c)Intense:CTT: -41°Cto -70°Cand(d)Very Intense::Less than -70°C
PROBABILITY OF CYCLOGENESIS (FORMATION OF DEPRESSION): NIL:0%,LOW:1-33%,MODERATE:34-66%AND HIGH:67-100%
This is a guidance Bulletin for WMO/ESCAP Panel Member countries. Visit respective National websites for Country specific Bulletins