



**REGIONAL SPECIALISED METEOROLOGICAL CENTRE-TROPICAL CYCLONES, NEW DELHI
TROPICAL WEATHER OUTLOOK**

DEMS-RSMC TROPICAL CYCLONES NEW DELHI DATED 14.12.2024

TROPICAL WEATHER OUTLOOK FOR THE NORTH INDIAN OCEAN (THE BAY OF BENGAL AND THE ARABIAN SEA) VALID FOR THE NEXT 168 HOURS ISSUED AT 0600 UTC OF 14.12.2024 BASED ON 0300 UTC OF 14.12.2024.

BAY OF BENGAL:

Yesterday's upper air cyclonic circulation over central parts of Andaman Sea and adjoining Gulf of Thailand lay over south Andaman Sea and adjoining areas at 0300 UTC of today 14th December, 2024 and extends upto 3.1 km above mean sea level. Under its influence, a low-pressure area is likely to form over southeast Bay of Bengal around 15th December. Thereafter, it is likely to become more marked and move west-northwestwards towards Tamil Nadu coast during subsequent two days.

A continuous watch is being maintained for further intensification and movement of the system.

Scattered to broken low and medium clouds with embedded intense to very intense convection lay over eastcentral and southeast Bay of Bengal, Andaman Sea and Tenasserim coasts. Scattered low and medium clouds with embedded moderate to intense convection lay over southwest Bay of Bengal.

***PROBABILITY OF CYCLOGENESIS (FORMATION OF DEPRESSION) DURING NEXT 168 HRS:**

| 24 HOURS | 24-48 HOURS | 48-72 HOURS | 72-96 HOURS | 96-120 HOURS | 120-144 HOURS | 144-168 HOURS |
|----------|-------------|-------------|-------------|--------------|---------------|---------------|
| NIL | NIL | NIL | NIL | NIL | NIL | NIL |

***NOTE: EVERY 24HR FORECAST IS VALID UPTO 0300 UTC (0830 IST) OF NEXT DAY**

ARABIAN SEA:

Yesterday's low-pressure area over Lakshadweep & adjoining Maldives area persists over the same region at 0300 UTC of today, the 14th December, 2024. The associated upper air cyclonic circulation extends upto 5.8 km above mean sea level. It is likely to move westwards and become less marked during next 24 hours.

Scattered low and medium clouds with embedded moderate to intense convection lay over south Arabian Sea, Lakshadweep Island area, Maldives and Comorin area. Scattered low and medium clouds with embedded isolated weak to moderate convection lay over northwest & central Arabian Sea.

***PROBABILITY OF CYCLOGENESIS (FORMATION OF DEPRESSION) DURING NEXT 168 HRS:**

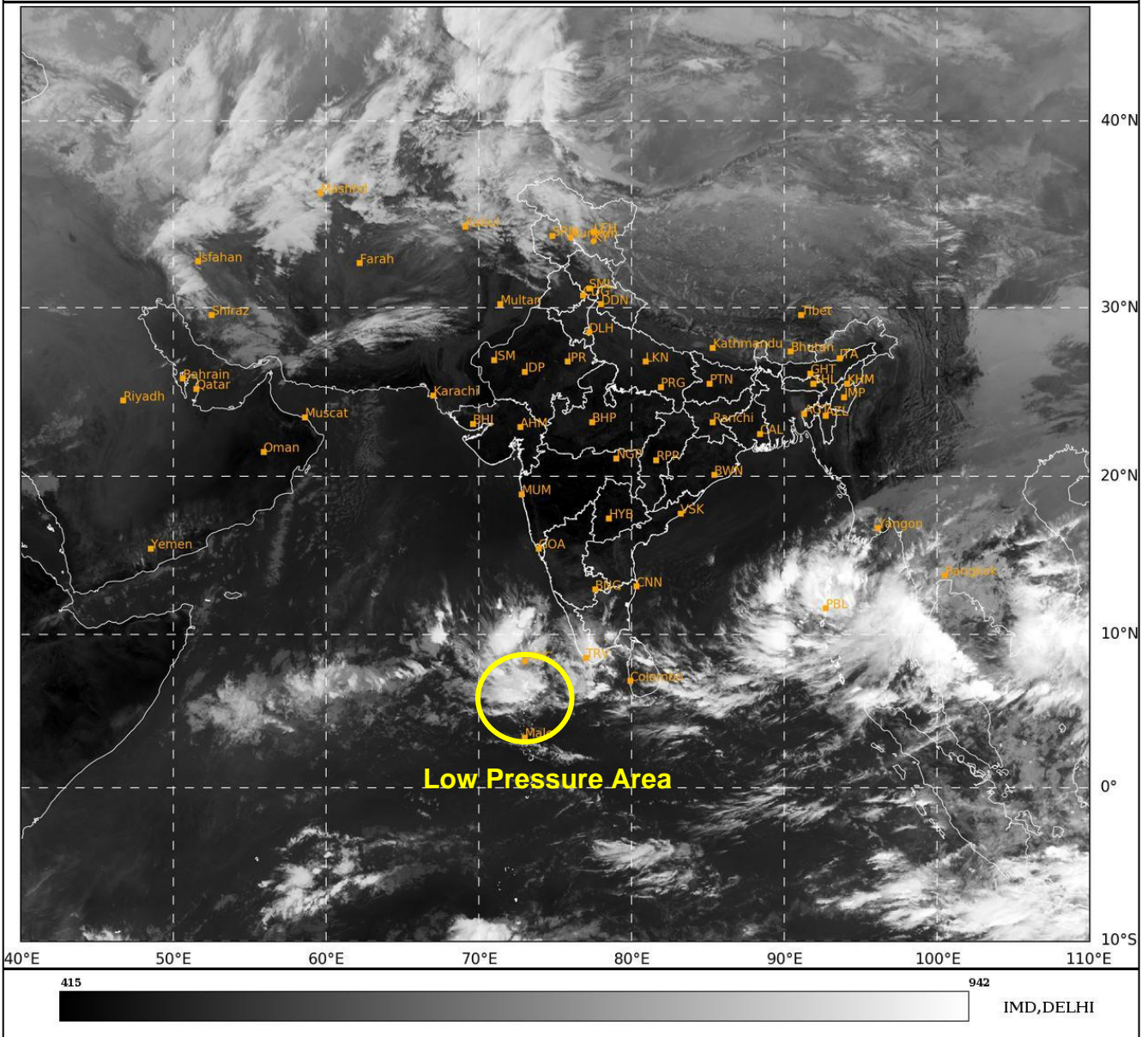
| 24 HOURS | 24-48 HOURS | 48-72 HOURS | 72-96 HOURS | 96-120 HOURS | 120-144 HOURS | 144-168 HOURS |
|----------|-------------|-------------|-------------|--------------|---------------|---------------|
| NIL | NIL | NIL | NIL | NIL | NIL | NIL |

***NOTE: EVERY 24HR FORECAST IS VALID UPTO 0300 UTC (0830 IST) OF NEXT DAY**

REMARKS: NIL

SAT : INSAT-3DR IMG
IMG_TIR1 10.8 um
L1C Mercator

14-12-2024/(0545 to 0612) GMT
14-12-2024/(1115 to 1142) IST



Cloud distribution: (a) Isolated: <25%, Scattered:25-50%, Broken: 51-75%, Solid:>75%, Convection Intensity: (a) Weak: Cloud Top Temperature (CTT) >-25°C, (b) Moderate: CTT: - 25°C to -40°C, (c) Intense: CTT: - 41°C to -70°C and (d) Very Intense: : Less than -70°C
PROBABILITY OF CYCLOGENESIS (FORMATION OF DEPRESSION):NIL: 0%, LOW: 1-33%, , MODERATE: 34-66% AND HIGH: 67-100%
This is a guidance Bulletin for WMO/ESCAP Panel Member countries. Visit respective National websites for Country specific Bulletins