



**REGIONAL SPECIALISED METEOROLOGICAL CENTRE-TROPICAL CYCLONES, NEW DELHI
TROPICAL WEATHER OUTLOOK**

DEMS-RSMC TROPICAL CYCLONES NEW DELHI DATED 27.05.2021

TROPICAL WEATHER OUTLOOK FOR NORTH INDIAN OCEAN (THE BAY OF BENGAL AND ARABIAN SEA) VALID FOR NEXT 120 HOURS ISSUED AT 0700 UTC OF 27.05.2021 BASED ON 0300 UTC OF 27.05.2021.

(A) DEEP DEPRESSION (REMNANT OF VSCS YAAS) OVER SOUTH JHARKHAND

THE **DEEP DEPRESSION** OVER SOUTH JHARKHAND AND NEIGHBORHOOD MOVED NEARLY NORTHWARDS WITH A SPEED OF ABOUT 05 KMPH DURING PAST 6 HOURS AND LAY CENTRED AT 0830 HRS IST OF TODAY, THE 27TH MAY, 2021 OVER SOUTH JHARKHAND AND NEIGHBOURHOOD, NEAR LATITUDE 22.9°N AND LONGITUDE 85.5°E, ABOUT 70KM WEST-NORTHWEST OF JAMSHEDPUR AND 65 KM SOUTHEAST OF RANCHI (JHARKHAND).

THE SYSTEM IS VERY LIKELY TO MOVE NEARLY NORTHWARDS AND WEAKEN INTO A DEPRESSION DURING NEXT 03 HOURS.

THE MAXIMUM SUSTAINED WIND SPEED IS 30 KNOTS GUSTING TO 40 KNOTS AROUND SYSTEM CENTRE. THE ESTIMATED CENTRAL PRESSURE IS 990 HPA.

AS PER SATELLITE IMAGERY BASED ON 0300 UTC OF TODAY, THE 27TH MAY, BROKEN LOW AND MEDIUM CLOUDS WITH EMBEDDED INTENSE TO VERY INTENSE CONVECTION LAY OVER GANGETIC WEST BENGAL, NORTH ODISHA, NORTH CHATTISGARH, REST PARTS OF JHARKHAND, EAST BIHAR & NEIGHBOURHOOD.

(B) BAY OF BENGAL:

SCATTERED TO BROKEN LOW AND MEDIUM CLOUDS WITH EMBEDDED INTENSE TO VERY INTENSE CONVECTION LAY OVER SOUTHEAST BAY OF BENGAL (BOB) AND ANDAMAN SEA. SCATTERED LOW AND MEDIUM CLOUDS WITH EMBEDDED MODERATE TO INTENSE CONVECTION LAY OVER REST PARTS OF SOUTH BOB.

PROBABILITY OF CYCLOGENESIS (FORMATION OF DEPRESSION) DURING NEXT 120 HRS:

24 HOURS	24-48 HOURS	48-72 HOURS	72-96 HOURS	96-120 HOURS
NIL	NIL	NIL	NIL	NIL

(C) ARABIAN SEA:

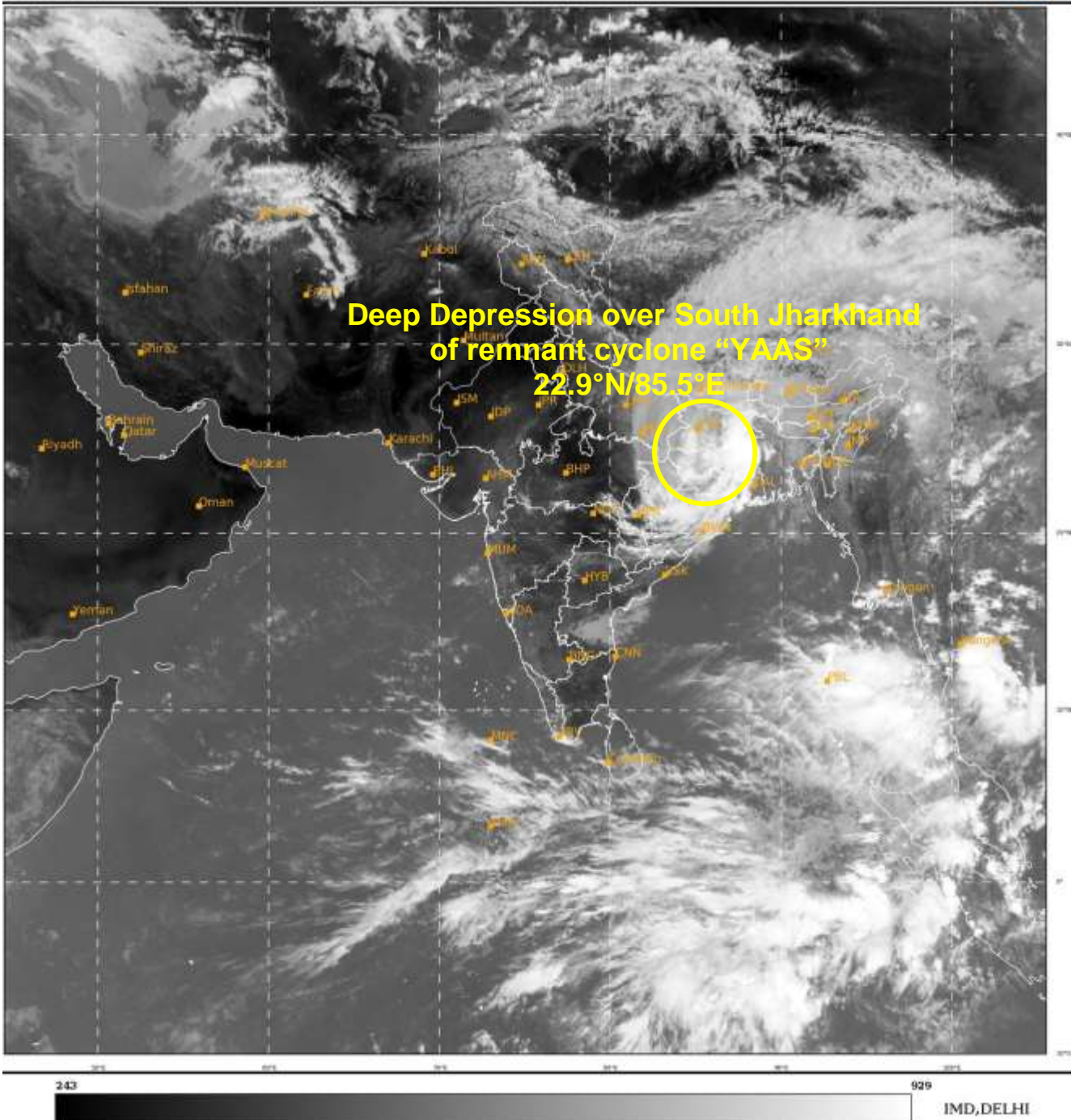
SCATTERED LOW AND MEDIUM CLOUDS WITH EMBEDDED MODERATE TO INTENSE CONVECTION LAY OVER SOUTHEAST ARABIAN SEA (AS). SCATTERED LOW AND MEDIUM CLOUDS WITH EMBEDDED ISOLATED WEAK TO MODERATE CONVECTION LAY OVER EASTCENTRAL AS.

PROBABILITY OF CYCLOGENESIS (FORMATION OF DEPRESSION) DURING NEXT 120 HRS:


24 HOURS	24-48 HOURS	48-72 HOURS	72-96 HOURS	96-120 HOURS
NIL	NIL	NIL	NIL	NIL

PROBABILITY OF CYCLOGENESIS (FORMATION OF DEPRESSION):NIL: 0%, LOW: 1-25%, FAIR: 26-50%, MODERATE: 51-75% AND HIGH: 76-100%

This is a guidance Bulletin for the WMO/ESCAP Panel Member countries,. Please visit respective National websites for Country specific Bulletins



PROBABILITY OF CYCLOGENESIS (FORMATION OF DEPRESSION):NIL: 0%, LOW: 1-25%, FAIR: 26-50%, MODERATE: 51-75% AND HIGH: 76-100%

 This is a guidance Bulletin for the WMO/ESCAP Panel Member countries,. Please visit respective National websites for Country specific Bulletins



OBSERVED AND FORECAST TRACK OF DEEP DEPRESSION (REMNANT OF VERY SEVERE CYCLONIC STORM “YAAS”) OVER SOUTH JHARKHAND AND NEIGHBOURHOOD BASED ON 0300 UTC OF 27th MAY, 2021



DATE/TIME IN UTC
IST=UTC + 0530
L: LOW PRESSURE AREA
WML: WELL MARKED LOW PRESSURE AREA
D: DEPRESSION (17-27 KT)
DD: DEEP DEPRESSION (28-33 KT)
CS: CYCLONIC STORM (34-47 KT)
SCS: SEVERE CYCLONIC STORM (48-63KT)
VSCS: VERY SEVERE CYCLONIC STORM (64-89 KT)
ESCS: EXTREMELY SEVERE CYCLONIC STORM (90-119 KT)
SuCS: SUPER CYCLONIC STORM (\geq 20 KT)

- LESS THAN 34 KT
- 34-47 KT
- \geq 48 KT
- OBSERVED TRACK
- FORECAST TRACK
- CONE OF UNCERTAINTY

PROBABILITY OF CYCLOGENESIS (FORMATION OF DEPRESSION):NIL: 0%, LOW: 1-25%, FAIR: 26-50%, MODERATE: 51-75% AND HIGH: 76-100%

This is a guidance Bulletin for the WMO/ESCAP Panel Member countries,. Please visit respective National websites for Country specific Bulletins