



**REGIONAL SPECIALISED METEOROLOGICAL CENTRE-TROPICAL CYCLONES, NEW DELHI
TROPICAL WEATHER OUTLOOK**

DEMS-RSMC TROPICAL CYCLONES NEW DELHI DATED 03.05.2023

TROPICAL WEATHER OUTLOOK FOR NORTH INDIAN OCEAN (THE BAY OF BENGAL AND THE ARABIAN SEA) VALID FOR NEXT 120 HOURS ISSUED AT 0600 UTC OF 03.05.2023 BASED ON 0300 UTC OF 03.05.2023.

BAY OF BENGAL:

A CYCLONIC CIRCULATION IS LIKELY TO DEVELOP OVER SOUTHEAST BAY OF BENGAL AROUND (BOB) 6TH MAY, 2023. UNDER ITS INFLUENCE, A LOW PRESSURE AREA IS LIKELY TO FORM OVER THE SAME REGION AROUND 7TH MAY. IT IS LIKELY TO CONCENTRATE INTO A DEPRESSION OVER SOUTHEAST BOB ON 8TH MAY. THEREAFTER, THERE IS A GOOD POSSIBILITY OF ITS INTENSIFICATION WHILE MOVING NEARLY NORTHWARDS TOWARDS CENTRAL BOB. THE SYSTEM IS UNDER CONSTANT WATCH AND BEING MONITORED REGULARLY. THE DETAILS OF ITS PATH AND INTENSIFICATION WILL BE PROVIDED AFTER THE FORMATION OF LOW PRESSURE AREA.

SCATTERED LOW AND MEDIUM CLOUDS WITH EMBEDDED INTENSE TO VERY INTENSE CONVECTION LAY OVER SOUTH BAY OF BENGAL AND ANDAMAN SEA. SCATTERED LOW AND MEDIUM CLOUDS WITH EMBEDDED MODERATE TO INTENSE CONVECTION LAY OVER WESTCENTRAL BAY OF BENGAL AND WEAK TO MODERATE CONVECTION LAY OVER REST BAY OF BENGAL.

PROBABILITY OF CYCLOGENESIS (FORMATION OF DEPRESSION) DURING NEXT 120 HRS:

24 HOURS	24-48 HOURS	48-72 HOURS	72-96 HOURS	96-120 HOURS
NIL	NIL	NIL	NIL	LOW

ARABIAN SEA:

BROKEN LOW AND MEDIUM CLOUDS WITH EMBEDDED INTENSE TO VERY INTENSE CONVECTION LAY OVER COMORIN AREA. SCATTERED LOW AND MEDIUM CLOUDS WITH EMBEDDED MODERATE TO INTENSE CONVECTION LAY OVER SOUTH ARABIAN SEA.

PROBABILITY OF CYCLOGENESIS (FORMATION OF DEPRESSION) DURING NEXT 120 HRS:

24 HOURS	24-48 HOURS	48-72 HOURS	72-96 HOURS	96-120 HOURS
NIL	NIL	NIL	NIL	NIL

REMARKS:

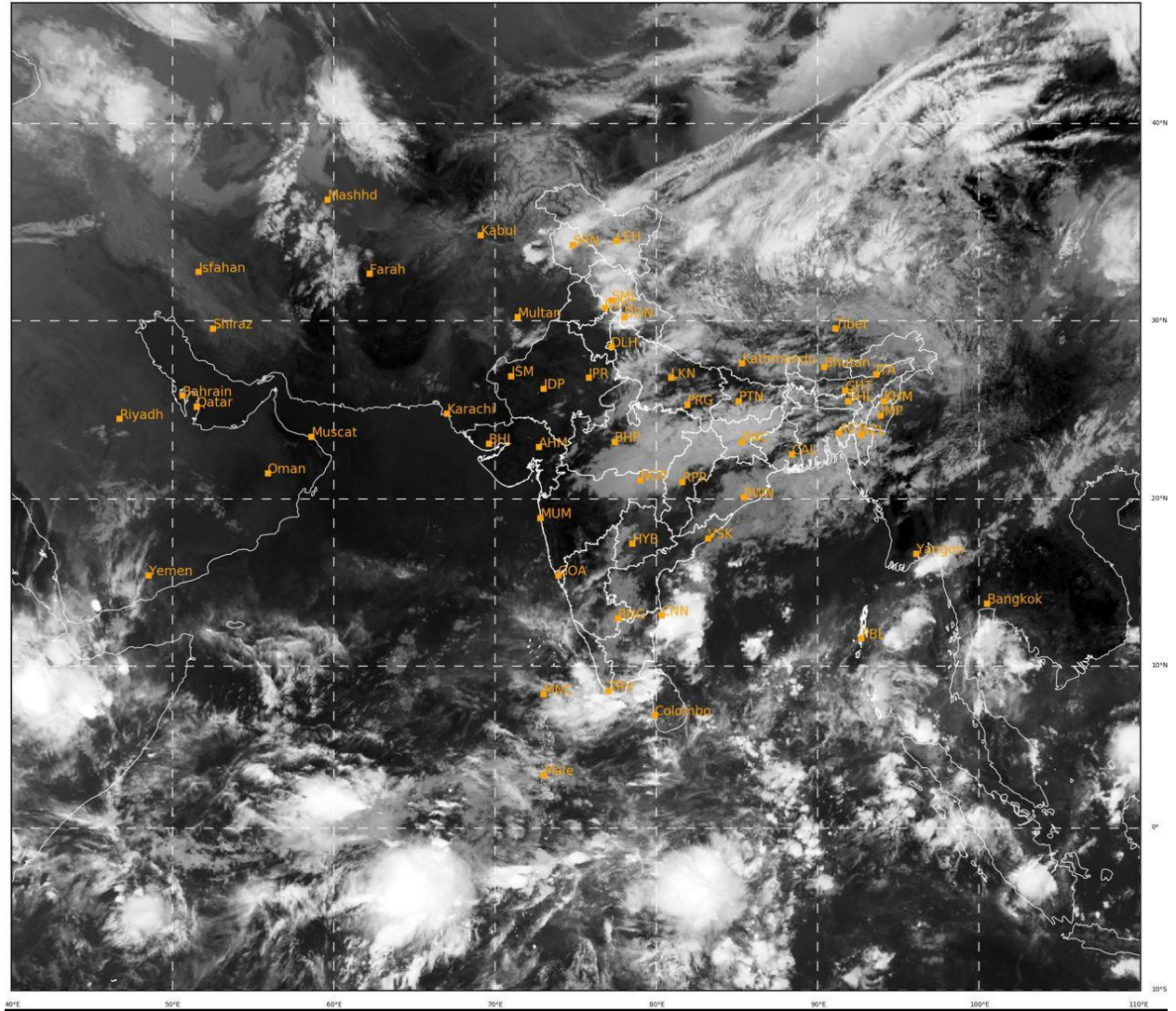
- ❖ THE MADDEN JULIAN INDEX (MJO) CURRENTLY LIES IN PHASE 4 WITH AMPLITUDE MORE THAN 2. THEREAFTER, IT WILL MOVE TO PHASE 5 AND

Cloud distribution: (a) Isolated: <25%, Scattered:25-50%, Broken: 51-75%, Solid:>75%, Convection Intensity: (a) Weak: Cloud Top Temperature (CTT) >-25°C, (b) Moderate: CTT: - 25°C to -40°C, (c) Intense: CTT: - 41°C to -70°C and (d) Very Intense: : Less than -70°C
PROBABILITY OF CYCLOGENESIS (FORMATION OF DEPRESSION): NIL: 0%, LOW: 1-33%, , MODERATE: 34-66% AND HIGH: 67-100%
This is a guidance Bulletin for WMO/ESCAP Panel Member countries. Visit respective National websites for Country specific Bulletins

CONTINUE IN SAME PHASE WITH AMPLITUDE REMAINING MORE THAN 2 DURING SUBSEQUENT 6 DAYS. THUS, MJO PHASE IS HIGHLY CONDUCTIVE FOR ENHANCED CONVECTION OVER THE BAY OF BENGAL (BOB) DURING NEXT 6-7 CURRENTLY, EASTERLY WINDS (1-3 MPS) ARE LIKELY TO PREVAIL OVER SOUTH ANDAMAN SEA AND SOUTH BOB IN THE LOWER TROPOSPHERIC LEVELS. THEREAFTER, THE WESTERLY WINDS ARE LIKELY TO PREVAIL OVER THE SOUTH BOB AND SOUTH ANDAMAN SEA WITH EASTERLY WINDS OVER CENTRAL & NORTH BOB. MJO IS ALSO LIKELY OVER BOB DURING NEXT 6-7 DAYS. THUS, THE EQUATORIAL WAVES AND MJO ARE LIKELY TO COLLECTIVELY CONTRIBUTE TOWARDS ENHANCEMENT OF CONVECTIVE ACTIVITY AND HENCE CYCLOGENESIS OVER SOUTH BOB FROM 6TH MAY ONWARDS.

- ❖ THE TROPICAL CYCLONE HEAT POTENTIAL (TCHP) IS MORE THAN 100 KJ/CM² OVER MAJOR PARTS OF SOUTH ANDAMAN SEA & ADJOINING SOUTHEAST BOB AND CENTRAL BOB. IT IS INDICATING DECREASING TENDENCY ABOUT 60-70 KJ/CM² ALONG THE EAST COAST OF INDIA & ALONG MYANMAR COAST. SEA SURFACE TEMPERATURE (SST) IS AROUND 30-32°C OVER ENTIRE BOB. THE SEA CONDITIONS OVER BOB ARE ALSO CONDUCTIVE FOR CYCLOGENESIS.
- ❖ CONSIDERING THE MODEL GUIDANCE, IMD GFS IS INDICATING A LOW PRESSURE AREA (LPA) OVER SOUTHEAST BOB ON 7TH, INTENSIFYING INTO A SEVERE CYCLONIC STORM ON 9TH OVER SOUTHEAST BOB AND MOVING NEARLY NORTH-NORTHEASTWARDS TOWARDS EASTCENTRAL BOB TILL 12TH,. GEFS IS INDICATING AN LPA OVER SOUTHEAST BOB ON 7TH AND DEPRESSION ON 8TH MAY, WITH FURTHER INTENSIFICATION INTO CYCLONIC STORM (CS) ON 9TH AND SEVERE CS (SCS) ON 10TH MAY. AGAINST YESTERDAY'S GUIDANCE, NCUM BASED ON 0000 UTC OF 3RD MAY IS INDICATING DEVELOPMENT OF AN LPA OVER SOUTHEAST BOB AROUND 9TH WITH GRADUAL NORTHWESTWARDS MOVEMENT AND INTENSIFICATION INTO DEPRESSION ON 10TH, CS ON 11TH & SCS ON 12TH. ECMWF IS INDICATING AN LPA OVER SOUTHEAST BOB AROUND 7TH, DEPRESSION OVER SOUTHEAST BOB AND ADJOINING SOUTH ANDAMAN SEA AROUND 9TH WITH GRADUAL NORTH-NORTHEASTWARDS MOVEMENT AND INTENSIFICATION INTO CYCLONIC STORM AROUND 10TH. ALL MODELS ARE UNANIMOUSLY INDICATING NEARLY NORTHWARDS MOVEMENT.

HENCE TO CONCLUDE, A CYCLONIC CIRCULATION IS LIKELY TO DEVELOP OVER SOUTHEAST BAY OF BENGAL AROUND (BOB) 6TH MAY, 2023. UNDER ITS INFLUENCE, A LOW PRESSURE AREA IS LIKELY TO FORM OVER THE SAME REGION AROUND 7TH MAY. IT IS LIKELY TO CONCENTRATE INTO A DEPRESSION OVER SOUTHEAST BOB ON 8TH MAY. THEREAFTER, THERE IS A GOOD POSSIBILITY OF ITS INTENSIFICATION WHILE MOVING NEARLY NORTHWARDS TOWARDS CENTRAL BOB. THE SYSTEM IS UNDER CONSTANT WATCH AND BEING MONITORED REGULARLY. THE DETAILS OF ITS PATH AND INTENSIFICATION WILL BE PROVIDED AFTER THE FORMATION OF LOW PRESSURE AREA.



431

951

IMD, DELHI