



**REGIONAL SPECIALISED METEOROLOGICAL CENTRE-TROPICAL CYCLONES, NEW DELHI  
TROPICAL WEATHER OUTLOOK**

**DEMS-RSMC SPECIAL TROPICAL CYCLONES NEW DELHI DATED 11.09.2022**

**TROPICAL WEATHER OUTLOOK FOR NORTH INDIAN OCEAN (THE BAY OF BENGAL OF BENGAL AND ARABIAN SEA) VALID FOR NEXT 120 HOURS ISSUED AT 0330 UTC OF 11.09.2022 BASED ON 0000 UTC OF 11.09.2022.**

**SUB: DEPRESSION OVER SOUTH COASTAL ODISHA AND NEIGHBOURHOOD**

THE WELL MARKED LOW PRESSURE AREA OVER WESTCENTRAL & ADJOINING NORTHWEST BAY OF BENGAL OFF NORTH ANDHRA PRADESH-SOUTH ODISHA COASTS MOVED WEST-NORTHWESTWARDS AND CONCENTRATED INTO A DEPRESSION AND LAY CENTERED AT 0000 HRS IST OF TODAY, THE 11TH SEPT 2022, OVER SOUTH COASTAL ODISHA AND NEIGHBOURHOOD NEAR LATITUDE 19.5°N AND LONGITUDE 84.7°E, ABOUT 20 KM NORTHWEST OF GOPALPUR(43049).

IT IS LIKELY TO MOVE WEST-NORTHWESTWARDS ACROSS SOUTH ODISHA AND SOUTH CHHATTISGARH DURING NEXT 24 HOURS AND WEAKEN GRADUALLY.

ESTIMATED CENTRAL PRESSURE IS ABOUT 998 HPA AROUND SYSTEM CENTRE OVER SOUTH COASTAL ODISHA AND NEIGHBOURHOOD. SEA CONDITION IS LIKELY TO BE ROUGH TO VERY ROUGH OVER NORTHWEST AND ADJOINING WESTCENTRAL BAY OF BENGAL OFF SOUTH ODISHA-ANDHRA PRADESH COASTS ON 11 SEPT.

AS PER INSAT 3D IMAGERY AT 0000 UT, SCATTERED TO BROKEN LOW AND MEDIUM CLOUDS WITH EMBEDDED INTENSE TO VERY INTENSE CONVECTION LAY OVER WESTCENTRAL & ADJOINING NORTHWEST BAY OF BENGAL, NORTH ANDHRA PRADESH-SOUTH ODISHA COASTS. MINIMUM CLOUD TOP TEMPERATURE IS MINUS 93°C.

(DR RK JENAAMANI)  
SCIENTIST-F  
RSMC NEW DELHI



# OBSERVED AND FORECAST TRACK OF DEPRESSION OVER SOUTH COASTAL ODISHA & NEIGHBOURHOOD BASED ON 0000 UTC OF 11th SEPTEMBER, 2022



**DATE/TIME IN UTC**  
 IST=UTC + 0530  
**L:** LOW PRESSURE AREA  
**WML:** WELL MARKED LOW PRESSURE AREA  
**D:** DEPRESSION (17-27 KT)  
**DD:** DEEP DEPRESSION (28-33 KT)  
**CS:** CYCLONIC STORM (34-47 KT)  
**SCS:** SEVERE CYCLONIC STORM (48-63KT)  
**VSCS:** VERY SEVERE CYCLONIC STORM (64-89 KT)  
**ESCS:** EXTREMELY SEVERE CYCLONIC STORM (90-119 KT)  
**SuCS:** SUPER CYCLONIC STORM ( $\geq$  120 KT)

- LESS THAN 34 KT
- 34-47 KT
- $\geq$  48 KT
- OBSERVED TRACK
- FORECAST TRACK
- CONE OF UNCERTAINTY

Cloud distribution: (a) Isolated: <25%, Scattered:25-50%, Broken: 51-75%, Solid:>75%, Convection Intensity: (a) Weak: Cloud Top Temperature (CTT) >-25°C, (b) Moderate: CTT: - 25°C to -40°C, (c) Intense: CTT: - 41°C to -70°C and (d) Very Intense: : Less than -70°C  
**PROBABILITY OF CYCLOGENESIS (FORMATION OF DEPRESSION):** NIL: 0%, LOW: 1-33%, MODERATE: 34-66% AND HIGH: 67-100%  
 This is a guidance Bulletin for WMO/ESCAP Panel Member countries. Visit respective National websites for Country specific Bulletins

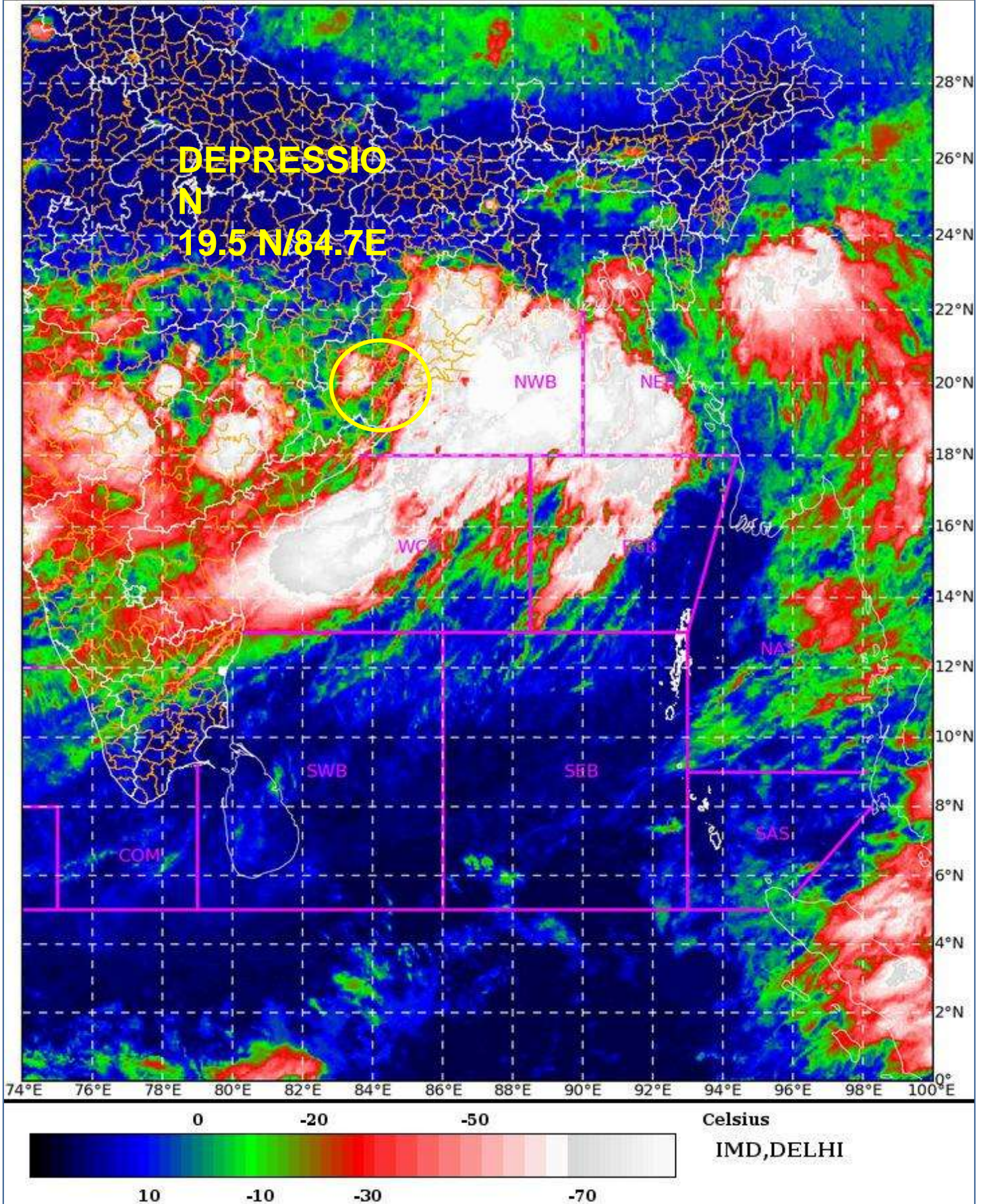
SAT : INSAT-3D IMG

11-09-2022/(0130 to 0156) GMT

IMG\_TIR1\_TEMP 10.8 um

11-09-2022/(0700 to 0726) IST

L1C Mercator



Cloud distribution: (a) Isolated: <25%, Scattered:25-50%, Broken: 51-75%, Solid:>75%, Convection Intensity: (a) Weak: Cloud Top Temperature (CTT) >-25°C, (b) Moderate: CTT: - 25°C to -40°C, (c) Intense: CTT: - 41°C to -70°C and (d) Very Intense: : Less than -70°C  
 PROBABILITY OF CYCLOGENESIS (FORMATION OF DEPRESSION): NIL: 0%, LOW: 1-33%, , MODERATE: 34-66% AND HIGH: 67-100%  
 This is a guidance Bulletin for WMO/ESCAP Panel Member countries. Visit respective National websites for Country specific Bulletins

## Fishermen warning graphics

