



REGIONAL SPECIALISED METEOROLOGICAL CENTRE-TROPICAL CYCLONES, NEW DELHI  
TROPICAL WEATHER OUTLOOK

DEMS-RSMC TROPICAL CYCLONES NEW DELHI DATED 19.10.2020

TROPICAL WEATHER OUTLOOK FOR NORTH INDIAN OCEAN (THE BAY OF BENGAL AND ARABIAN SEA) VALID FOR NEXT 120 HOURS ISSUED AT 0600 UTC OF 19.10.2020 BASED ON 0300 UTC OF 19.10.2020.

**BAY OF BENGAL:**

SCATTERED LOW AND MEDIUM CLOUDS WITH EMBEDDED INTENSE TO VERY INTENSE CONVECTION LAY OVER WESTCENTRAL ADJOINING SOUTHWEST BAY OF BENGAL AND ALSO OVER SOUTHEAST BAY OF BENGAL ADJOINING CENTRAL ANDAMAN SEA. SCATTERED LOW AND MEDIUM CLOUDS WITH EMBEDDED MODERATE TO INTENSE CONVECTION LAY OVER REST OF BAY OF BENGAL. SCATTERED LOW AND MEDIUM CLOUDS WITH EMBEDDED WEAK TO MODERATE CONVECTION OVER REST OF ANDAMAN SEA.

A LOW PRESSURE AREA IS VERY LIKELY TO FORM OVER EASTCENTRAL BOB AROUND 20<sup>TH</sup> OCTOBER.

**PROBABILITY OF CYCLOGENESIS (FORMATION OF DEPRESSION) DURING NEXT 120 HRS:**

24 HOURS	24-48 HOURS	48-72 HOURS	72-96 HOURS	96-120 HOURS
NIL	NIL	NIL	NIL	NIL

**ARABIAN SEA:**

THE DEPRESSION OVER EASTCENTRAL AND ADJOINING WESTCENTRAL & NORTH ARABIAN SEA MOVED FURTHER WESTWARDS AND WEAKENED INTO A WELL MARKED LOW PRESSURE AREA AT 0000 UTC OF TODAY, THE 19TH OCTOBER 2020 OVER WESTCENTRAL ARABIAN SEA & NEIGHBOURHOOD. IT PERSISTED OVER THE SAME REGION AT 0300 UTC OF TODAY.

SCATTERED LOW AND MEDIUM CLOUDS WITH EMBEDDED MODERATE TO INTENSE CONVECTION LAY OVER WESTCENTRAL ADJOINING NORTHWEST ARABIAN SEA. SCATTERED LOW AND MEDIUM CLOUDS WITH EMBEDDED ISOLATED WEAK TO MODERATE CONVECTION LAY OVER EAST ARABIAN SEA.

**PROBABILITY OF CYCLOGENESIS (FORMATION OF DEPRESSION) DURING NEXT 120 HRS:**

24 HOURS	24-48 HOURS	48-72 HOURS	72-96 HOURS	96-120 HOURS
NIL	NIL	NIL	NIL	NIL

PROBABILITY OF CYCLOGENESIS (FORMATION OF DEPRESSION):NIL: 0%, LOW: 1-25%, FAIR: 26-50%, MODERATE: 51-75% AND HIGH: 76-100%

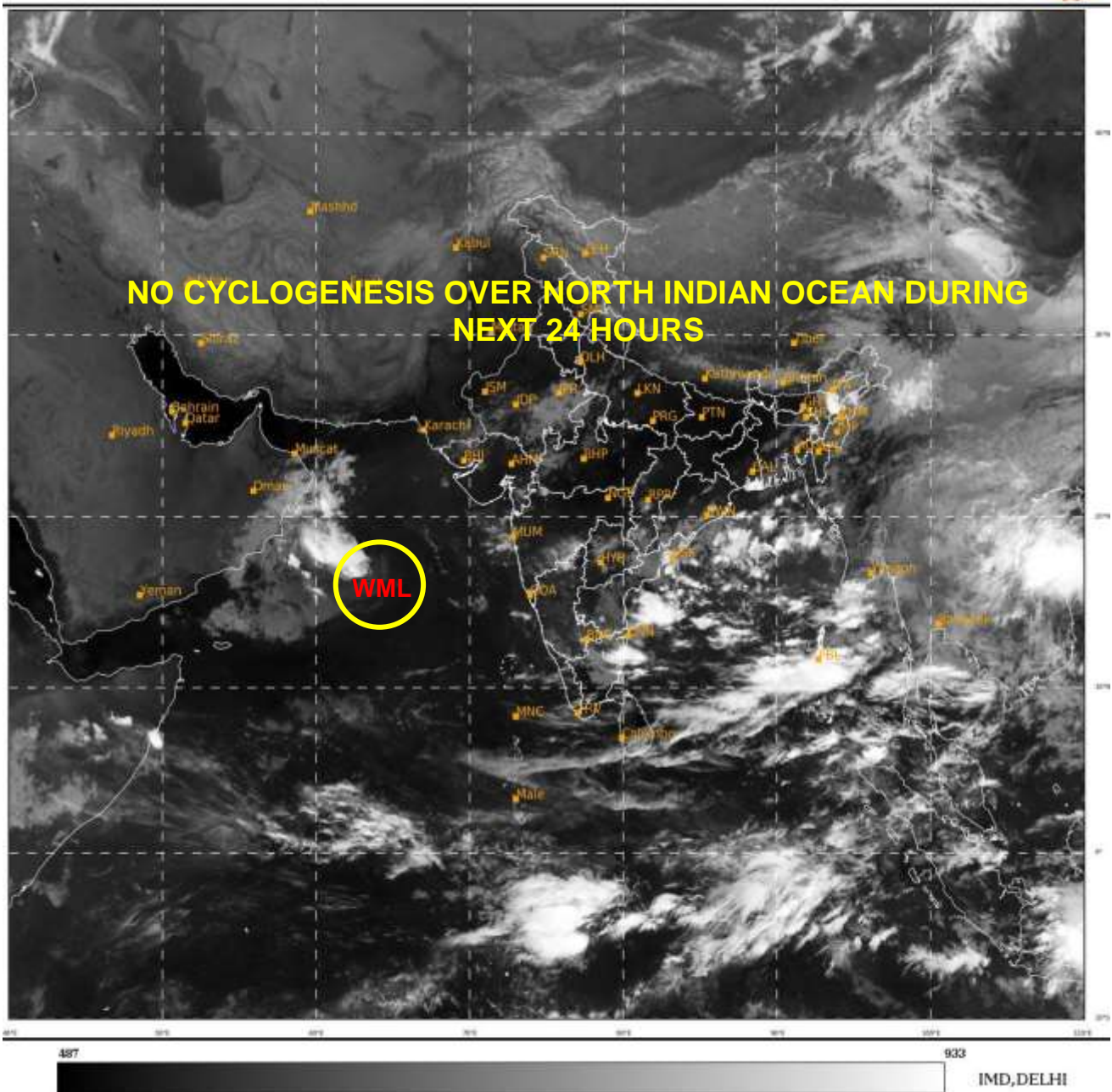
This is a guidance Bulletin for the WMO/ESCAP Panel Member countries. Please visit respective National websites for Country specific Bulletins

**REMARKS:**

SEA SURFACE TEMPERATURE IS AROUND 29-31°C OVER MOST PARTS OF BOB. TROPICAL CYCLONE HEAT POTENTIAL IS AROUND 70-90 KJ/CM<sup>2</sup> OVER ENTIRE BOB, EXCEPT SOME PARTS ALONG THE EAST COAST OF INDIA OFF ANDHRA PRADESH-TAMILNADU-PUDUCHERRY COASTS. A FEW MODELS ARE INDICATING DEVELOPMENT OF A LOW PRESSURE AREA OVER EASTCENTRAL BOB AROUND 20<sup>TH</sup> OCTOBER WITH NO SIGNIFICANT INTENSIFICATION AND MOVEMENT TOWARDS NORTH BOB.

SAT : INSAT-3D IMG  
IMG\_TIR1 10.8 um  
LIC Mercator

19-10-2020/(0300 to 0327) GMT  
19-10-2020/(0830 to 0857) IST



WML: WELL MARKED LOW PRESSURE AREA

PROBABILITY OF CYCLOGENESIS (FORMATION OF DEPRESSION):NIL: 0%, LOW: 1-25%, FAIR: 26-50%, MODERATE: 51-75% AND HIGH: 76-100%

This is a guidance Bulletin for the WMO/ESCAP Panel Member countries,. Please visit respective National websites for Country specific Bulletins