



**REGIONAL SPECIALISED METEOROLOGICAL CENTRE-TROPICAL CYCLONES, NEW DELHI
TROPICAL WEATHER OUTLOOK**

DEMS-RSMC TROPICAL CYCLONES NEW DELHI DATED 11.10.2021

TROPICAL WEATHER OUTLOOK FOR NORTH INDIAN OCEAN (THE BAY OF BENGAL AND ARABIAN SEA) VALID FOR NEXT 120 HOURS ISSUED AT 0600 UTC OF 11.10.2021 BASED ON 0300 UTC OF 11.10.2021.

BAY OF BENGAL:

THE CYCLONIC CIRCULATION OVER NORTH ANDAMAN SEA & NEIGHBOURHOOD IS PERSISTING OVER THE SAME REGION SINCE 9TH MORNING (0000 UTC). AS A RESULT, THE FORMATION OF LOW PRESSURE AREA IS GETTING DELAYED. AS PER THE LATEST ANALYSIS, UNDER THE INFLUENCE OF THIS CYCLONIC CIRCULATION, A LOW PRESSURE AREA IS LIKELY TO FORM OVER EASTCENTRAL BAY OF BENGAL & ADJOINING NORTH ANDAMAN SEA AROUND 13TH OCTOBER. IT IS LIKELY TO MOVE WEST-NORTHWESTWARDS AND REACH SOUTH ODISHA-NORTH ANDHRA PRADESH COASTS AS A WELL MARKED LOW PRESSURE AREA AROUND 15TH OCTOBER.

SCATTERED LOW AND MEDIUM CLOUDS WITH EMBEDDED INTENSE TO VERY INTENSE CONVECTION LAY OVER SOUTHWEST BAY OF BENGAL AND MODERATE TO INTENSE CONVECTION LAY OVER CENTRAL BAY OF BENGAL & SOUTHEAST BAY OF BENGAL ANDAMAN SEA.

PROBABILITY OF CYCLOGENESIS (FORMATION OF DEPRESSION) DURING NEXT 120 HRS:

24 HOURS	24-48 HOURS	48-72 HOURS	72-96 HOURS	96-120 HOURS
NIL	NIL	NIL	NIL	NIL

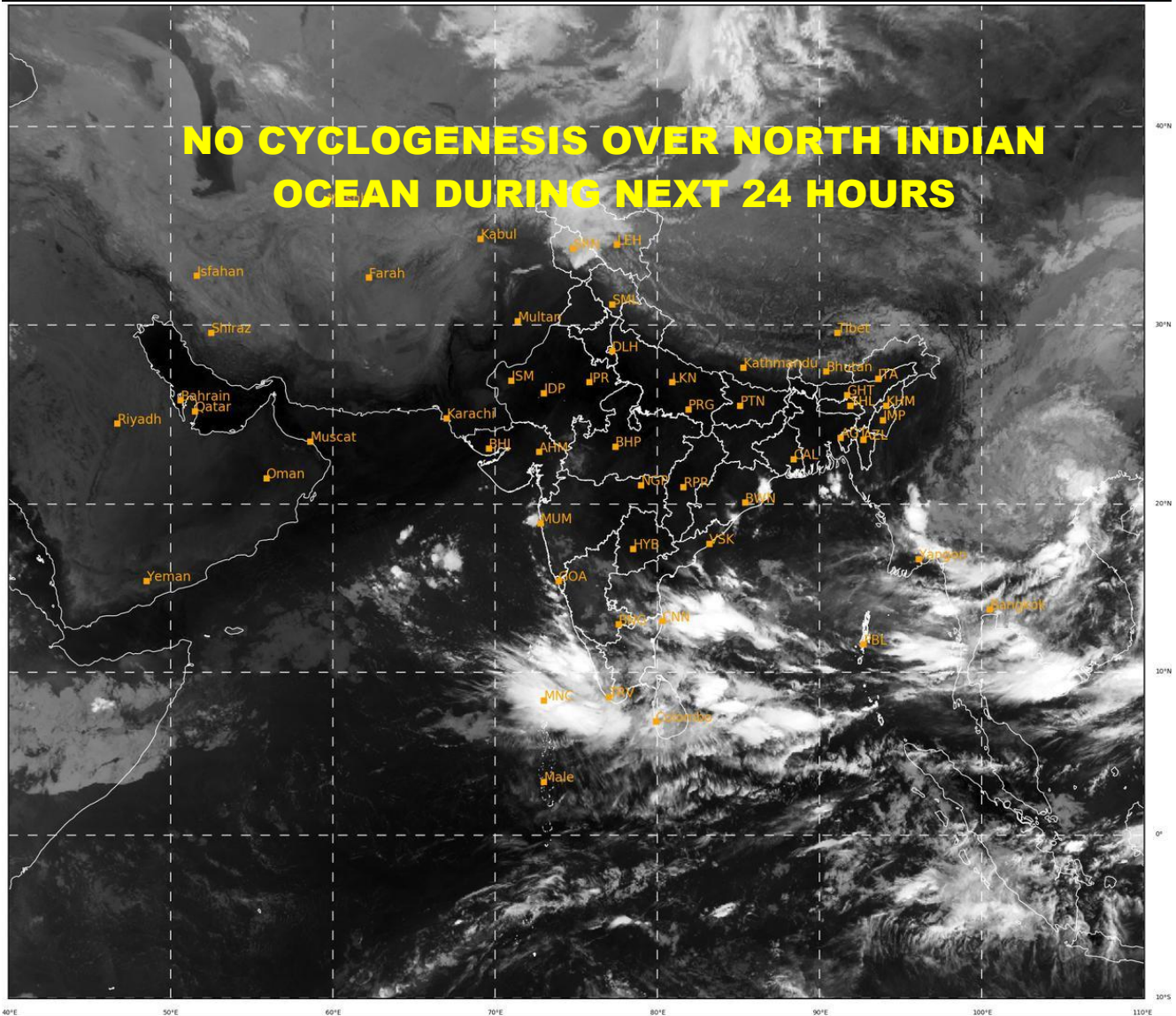
ARABIAN SEA:

BROKEN LOW AND MEDIUM CLOUDS WITH EMBEDDED INTENSE TO VERY INTENSE CONVECTION LAY OVER SOUTHEAST ARABIAN SEA OFF KERALA COAST & N/HOOD. SCATTERED LOW AND MEDIUM CLOUDS WITH EMBEDDED MODERATE TO INTENSE CONVECTION LAY OVER CENTRAL PARTS OF CENTRAL ARABIAN SEA.

PROBABILITY OF CYCLOGENESIS (FORMATION OF DEPRESSION) DURING NEXT 120 HRS:

24 HOURS	24-48 HOURS	48-72 HOURS	72-96 HOURS	96-120 HOURS
NIL	NIL	NIL	NIL	NIL

REMARKS: NIL



498

929

IMD, DELHI