



**REGIONAL SPECIALISED METEOROLOGICAL CENTRE -TROPICAL CYCLONES, NEW DELHI
TROPICAL WEATHER OUTLOOK**

DEMS-RSMC TROPICAL CYCLONES NEW DELHI DATED 20.04.2026

TROPICAL WEATHER OUTLOOK FOR THE NORTH INDIAN OCEAN (THE BAY OF BENGAL AND THE ARABIAN SEA) VALID FOR THE NEXT 168 HOURS ISSUED AT 0600 UTC OF 20.04.2026 BASED ON 0300 UTC OF 20.04.2026.

BAY OF BENGAL:

Scattered to broken, low and medium clouds with embedded moderate to intense convection lay over south Bay of Bengal and south Andaman Sea. Scattered low to medium clouds with embedded isolated weak to moderate convection lay over north and central Bay of Bengal.

***PROBABILITY OF CYCLOGENESIS (FORMATION OF DEPRESSION) DURING NEXT 168 HRS)**

24 HOURS	24-48 HOURS	48-72 HOURS	72-96 HOURS	96-120 HOURS	120-144 HOURS	144-168 HOURS
NIL	NIL	NIL	NIL	NIL	NIL	NIL

***NOTE: EVERY 24HR FORECAST IS VALID UPTO 0300 UTC (0830 IST) OF NEXT DAY**

ARABIAN SEA:

Scattered low to medium clouds with embedded moderate to intense convection lay over the extreme southwest Arabian Sea & adjoining Equatorial Indian Ocean and isolated weak to moderate convection lay over southeast Arabian Sea and Maldives area. Scattered low to medium clouds lay over the eastcentral Arabian Sea and Lakshadweep Island area.

***PROBABILITY OF CYCLOGENESIS (FORMATION OF DEPRESSION) DURING NEXT 168 HRS:**

24 HOURS	24-48 HOURS	48-72 HOURS	72-96 HOURS	96-120 HOURS	120-144 HOURS	144-168 HOURS
NIL	NIL	NIL	NIL	NIL	NIL	NIL

***NOTE: EVERY 24HR FORECAST IS VALID UPTO 0300 UTC (0830 IST) OF NEXT DAY**

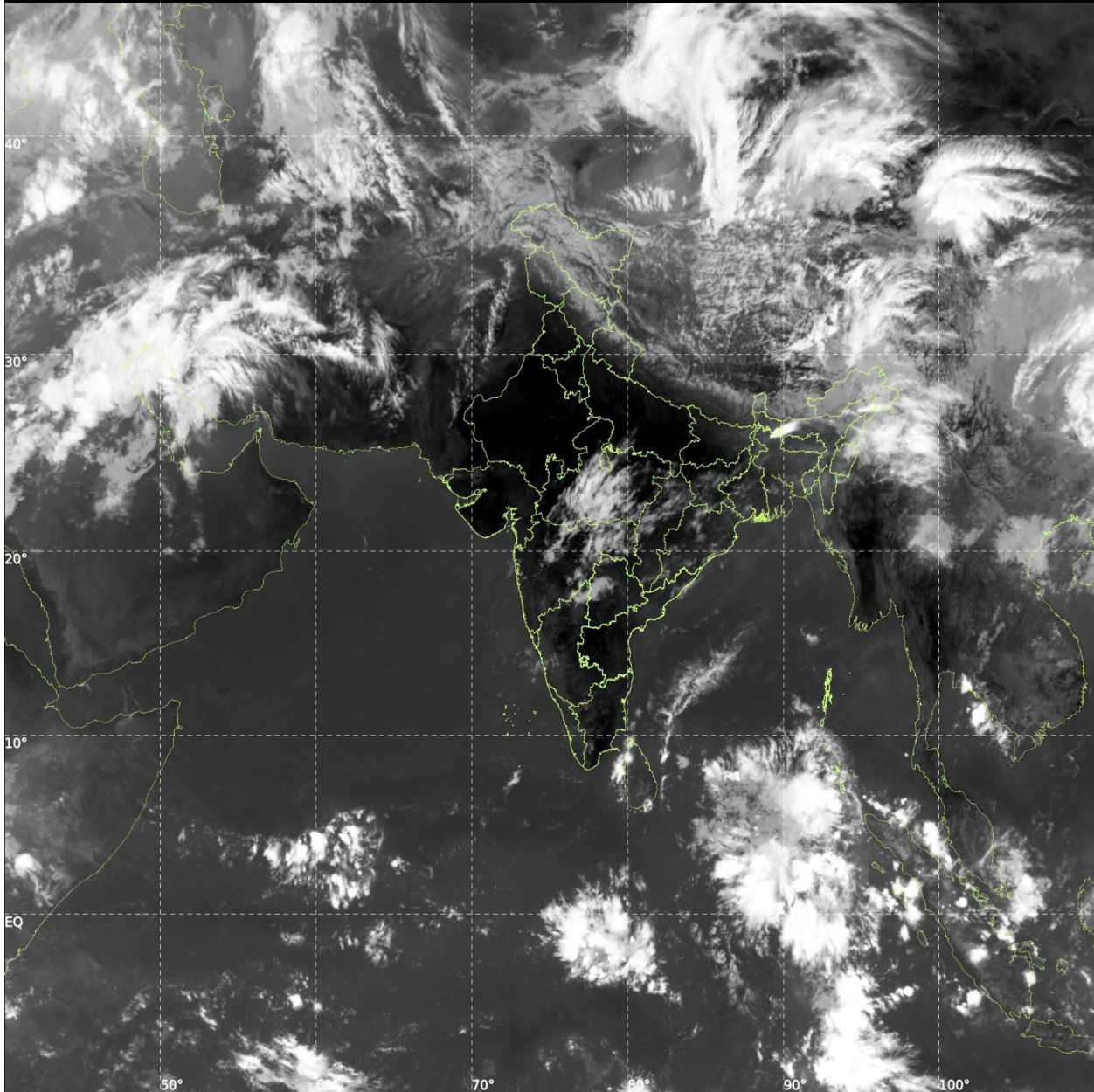
REMARKS: Nil



INSAT-3DS IMG, Thermal Infrared1 Count @ 10.83 μm
GMT:20-04-2026/(0400-0427) IST:20-04-2026/(0930-0957)
LIC MERCATOR (LINEAR STRETCH: 1%)

397

888



Cloud distribution: (a) Isolated: <25%, Scattered:25-50%, Broken: 51-75%, Solid:>75%, Convection Intensity: (a) Weak: Cloud Top Temperature(CTT)>-25°C, (b) Moderate: CTT:-25°Cto-40°C, (c) Intense: CTT: -41°Cto -70°C and (d) Very Intense::Less than -70°C Probability of cyclogenesis (formation of depression) :NIL:0%, LOW:1-33%, MODERATE:34-66% and HIGH:67-100%
This is a guidance Bulletin for WMO/ESCAP Panel Member countries. Visit respective National websites for Country specific Bulletins.