



**REGIONAL SPECIALISED METEOROLOGICAL CENTRE-TROPICAL CYCLONES, NEW DELHI
TROPICAL WEATHER OUTLOOK**

DEMS-RSMC TROPICAL CYCLONES NEW DELHI DATED 21.09.2020

TROPICAL WEATHER OUTLOOK FOR NORTH INDIAN OCEAN (THE BAY OF BENGAL AND ARABIAN SEA) VALID FOR NEXT 120 HOURS ISSUED AT 0600 UTC OF 21.09.2020 BASED ON 0300 UTC OF 21.09.2020 .

BAY OF BENGAL:

YESTERDAY'S LOW PRESSURE AREA OVER NORTHWEST BAY OF BENGAL AND NEIGHBORHOOD NOW LIES OVER NORTHWEST BAY OF BENGAL AND ADJOINING NORTH COASTAL ODISHA AND ASSOCIATED CYCLONIC CIRCULATION EXTENDS UPTO 7.6 KM ABOVE MEAN SEA LEVEL TILTING SOUTHWESTWARDS WITH HEIGHT. IT IS LIKELY TO MOVE WEST-NORTHWESTWARDS DURING NEXT 2-3 DAYS.

SCATTERED LOW AND MEDIUM CLOUDS WITH EMBEDDED INTENSE TO VERY INTENSE CONVECTION LAY OVER CENTRAL ADJOINING SOUTHEAST BAY OF BENGAL AND ALSO OVER NORTHEAST BAY OF BENGAL ARAKAN COAST. SCATTERED LOW AND MEDIUM CLOUDS WITH EMBEDDED MODERATE TO INTENSE CONVECTION LAY OVER SOUTHWEST BAY OF BENGAL GULF OF MARTABAN & TENNASERIM COAST. S SCATTERED LOW AND MEDIUM CLOUDS WITH EMBEDDED ISOLATED WEAK TO MODERATE CONVECTION LAY OVER NORTHWEST BAY OF BENGAL & ANDMAN SEA.

PROBABILITY OF CYCLOGENESIS DURING NEXT 120 HRS:

| 24 HOURS | 24-48 HOURS | 48-72 HOURS | 72-96 HOURS | 96-120 HOURS |
|----------|-------------|-------------|-------------|--------------|
| NIL | NIL | NIL | NIL | NIL |

ARABIAN SEA:

SCATTERED LOW AND MEDIUM CLOUDS WITH EMBEDDED INTENSE TO VERY INTENSE CONVECTION LAY OVER EASTCENTRAL ARABIAN SEA. SCATTERED LOW AND MEDIUM CLOUDS WITH EMBEDDED MODERATE TO INTENSE CONVECTION LAY OVER SE ARSEA GULF OF KUTCH. SCATTERED LOW AND MEDIUM CLOUDS WITH EMBEDDED WEAK TO MODERATE CONVECTION LAY OVER NORTHEAST ARABIAN SEA & GULF OF CAMBAY.

PROBABILITY OF CYCLOGENESIS DURING NEXT 120 HRS :

| 24 HOURS | 24-48 HOURS | 48-72 HOURS | 72-96 HOURS | 96-120 HOURS |
|----------|-------------|-------------|-------------|--------------|
| NIL | NIL | NIL | NIL | NIL |

REMARKS:

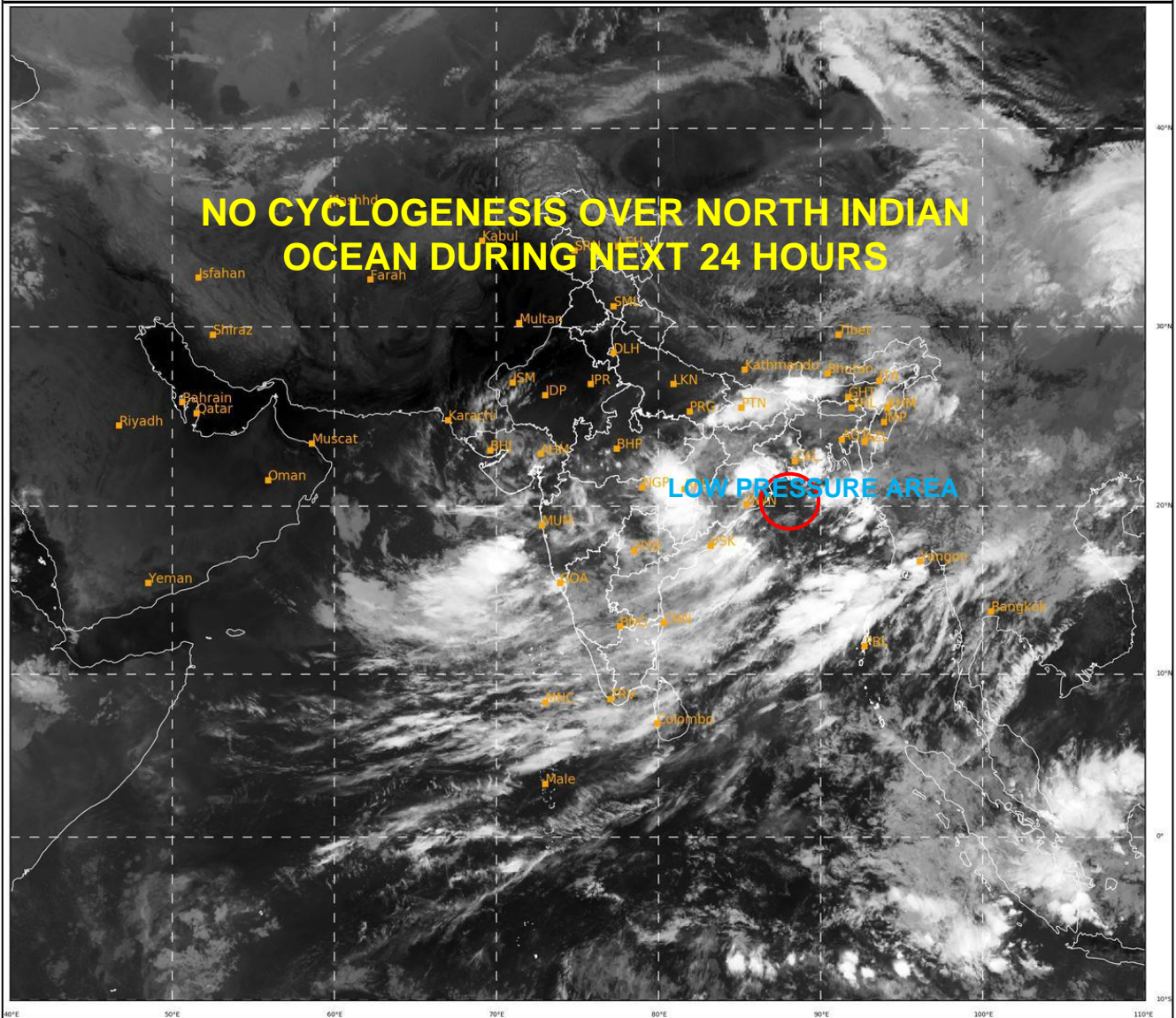
Nil

PROBABILITY OF CYCLOGENESIS (FORMATION OF DEPRESSION):NIL: 0%, LOW: 1-25%, FAIR: 26-50%, MODERATE: 51-75% AND HIGH: 76-100%

✚ This is a guidance Bulletin for the WMO/ESCAP Panel Member countries,. Please visit respective National websites for Country specific Bulletins

SAT : INSAT-3D IMG
IMG_TIR1 10.8 um
LIC Mercator

21-09-2020/(0300 to 0326) GMT
21-09-2020/(0830 to 0856) IST



451

931

IMD, DELHI

PROBABILITY OF CYCLOGENESIS (FORMATION OF DEPRESSION):NIL: 0%, LOW: 1-25%, FAIR: 26-50%, MODERATE: 51-75% AND HIGH: 76-100%

✚ This is a guidance Bulletin for the WMO/ESCAP Panel Member countries,. Please visit respective National websites for Country specific Bulletins