



**REGIONAL SPECIALISED METEOROLOGICAL CENTRE-TROPICAL CYCLONES, NEW DELHI  
TROPICAL WEATHER OUTLOOK**

**DEMS-RSMC SPECIAL TROPICAL CYCLONES NEW DELHI DATED 23.11.2022**

**TROPICAL WEATHER OUTLOOK FOR NORTH INDIAN OCEAN (THE BAY OF BENGAL AND THE ARABIAN SEA) VALID FOR NEXT 120 HOURS ISSUED AT 0600 UTC OF 23.11.2022 BASED ON 0300 UTC OF 23.11.2022.**

**BAY OF BENGAL:**

YESTERDAY'S WELL MARKED LOW PRESSURE AREA OVER WESTCENTRAL AND ADJOINING SOUTHWEST BAY OF BENGAL OFF SOUTH ANDHRA PRADESH-NORTH TAMIL NADU COASTS WEAKENED INTO LOW PRESSURE AREA OVER THE SAME REGION AT 1200 UTC OF 22<sup>ND</sup> NOVEMBER AND NOW LAY AS A LOW PRESSURE AREA OVER SOUTH COASTAL ANDHRA PRADESH & NEIGHBOURHOOD AT 0300 UTC OF 23<sup>RD</sup> NOVEMBER, 2022.

A FRESH CYCLONIC CIRCULATION IS LIKELY TO EMERGE INTO NORTH ANDAMAN SEA DURING NEXT 48 HOURS.

SCATTERED TO BROKEN LOW AND MEDIUM CLOUDS WITH EMBEDDED INTENSE TO VERY INTENSE CONVECTION LAY OVER ANDAMAN SEA. SCATTERED LOW AND MEDIUM CLOUDS WITH EMBEDDED MODERATE TO INTENSE CONVECTION LAY OVER WESTCENTRAL BAY OF BENGAL ADJOINING ANDHRA PRADESH COAST AND EASTCENTRAL ADJOINING SOUTHEAST BAY OF BENGAL .

**PROBABILITY OF CYCLOGENESIS (FORMATION OF DEPRESSION) DURING NEXT 120 HRS:**

24 HOURS	24-48 HOURS	48-72 HOURS	72-96 HOURS	96-120 HOURS
NIL	NIL	NIL	NIL	NIL

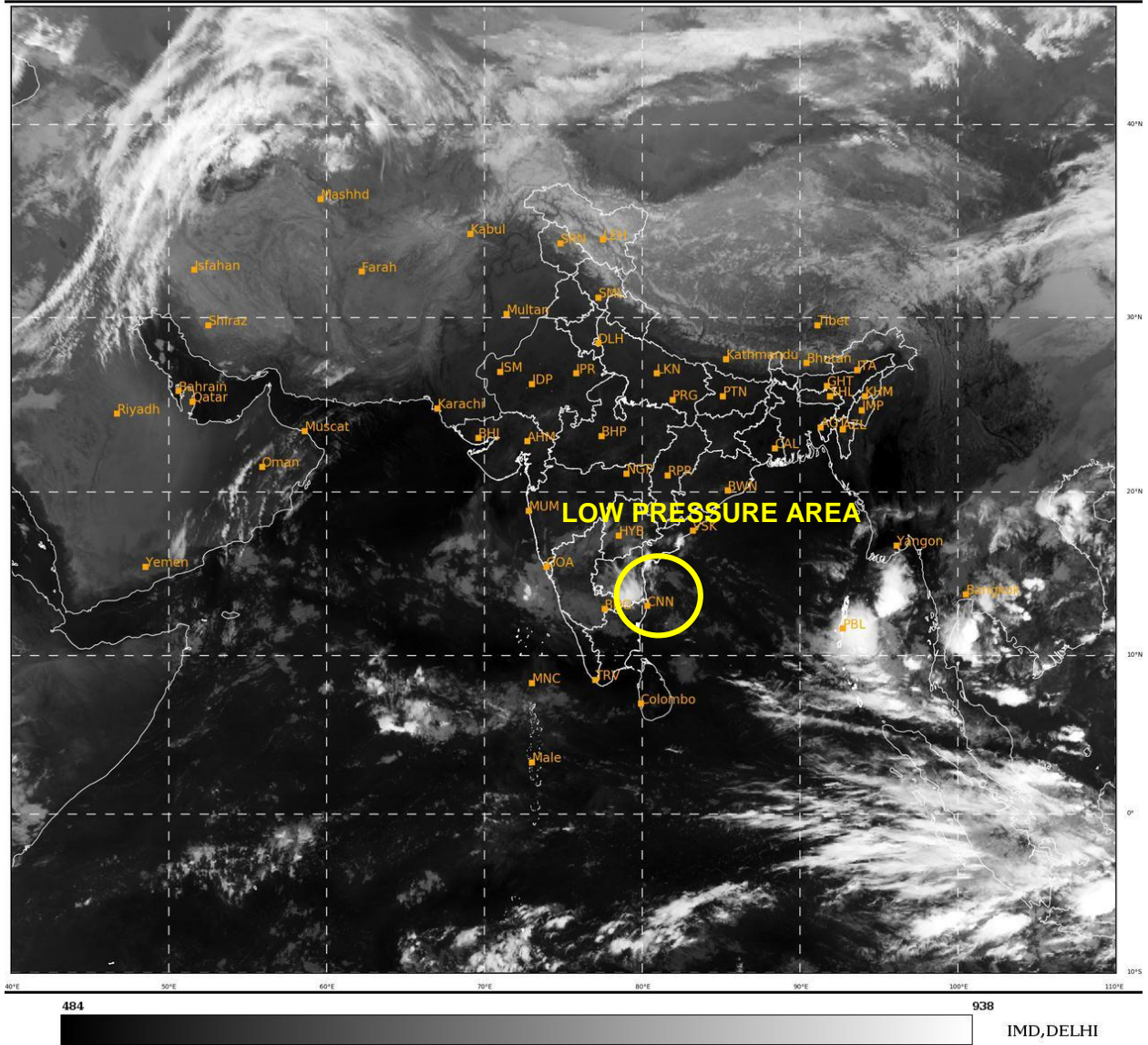
**ARABIAN SEA:**

SCATTERED LOW AND MEDIUM CLOUDS WITH EMBEDDED MODERATE TO INTENSE CONVECTION LAY OVER CENTRAL PARTS OF SOUTH ARABIAN SEA AND EASTCENTRAL ARABIAN SEA OFF KARNATAKA COAST. SCATTERED LOW AND MEDIUM CLOUDS WITH EMBEDDED ISOLATED WEAK TO MODERATE CONVECTION LAY OVER WEST CENTRAL ARABIAN SEA .

**PROBABILITY OF CYCLOGENESIS (FORMATION OF DEPRESSION) DURING NEXT 120 HRS:**

24 HOURS	24-48 HOURS	48-72 HOURS	72-96 HOURS	96-120 HOURS
NIL	NIL	NIL	NIL	NIL

**Remarks:**



LPA: LOW PRESSURE AREA