



REGIONAL SPECIALISED METEOROLOGICAL CENTRE-TROPICAL CYCLONES, NEW DELHI  
**TROPICAL CYCLONE ADVISORY NO. 8**

FROM: RSMC –TROPICAL CYCLONES, NEW DELHI

TO: STORM WARNING CENTRE, NAYPYI TAW (MYANMAR)  
STORM WARNING CENTRE, BANGKOK (THAILAND)  
STORM WARNING CENTRE, COLOMBO (SRILANKA)  
STORM WARNING CENTRE, DHAKA (BANGLADESH)  
STORM WARNING CENTRE, KARACHI (PAKISTAN)  
METEOROLOGICAL OFFICE, MALE (MALDIVES)  
OMAN METEOROLOGICAL DEPARTMENT, MUSCAT (THROUGH RTH JEDDAH)  
YEMEN METEOROLOGICAL SERVICES, REPUBLIC OF YEMEN (THROUGH RTH JEDDAH)  
NATIONAL CENTRE FOR METEOROLOGY, UAE (THROUGH RTH JEDDAH)  
PRESIDENCY OF METEOROLOGY AND ENVIRONMENT, SAUDI ARABIA (THROUGH RTH JEDDAH)  
IRAN METEOROLOGICAL ORGANISATION, (THROUGH RTH JEDDAH)  
QATAR METEOROLOGICAL DEPARTMENT (THROUGH RTH JEDDAH)

TROPICAL CYCLONE ADVISORY NO. 8 FOR NORTH INDIAN OCEAN (THE BAY OF BENGAL AND ARABIAN SEA) VALID FOR NEXT 120 HOURS ISSUED AT 0600 UTC OF 04.12.2021 BASED ON 0300 UTC OF 04.12.2021

SUB: CYCLONIC STORM 'JAWAD' OVER WESTCENTRAL BAY OF BENGAL

THE **CYCLONIC STORM 'JAWAD'** (PRONOUNCED AS JOWAD) OVER WESTCENTRAL BAY OF BENGAL MOVED NEARLY NORTHWARDS WITH A SPEED OF 6 KMPH DURING PAST 06 HOURS AND LAY CENTERED AT 0300 UTC OF TODAY, THE 04<sup>TH</sup> DECEMBER 2021, OVER WESTCENTRAL BAY OF BENGAL NEAR LAT. 16.4°N AND LONG. 84.8°E, ABOUT 210 KM EAST-SOUTHEAST OF VISHAKHAPATNAM (43149), 320 KM SOUTH OF GOPALPUR (43049), 390 KM SOUTH-SOUTHWEST OF PURI (43053) AND 470 KM SOUTH-SOUTHWEST OF PARADIP (42976).

**IT IS LIKELY TO WEAKEN GRADUALLY AND MOVE NEARLY NORTHWARDS DURING NEXT 12 HOURS AND THEN NORTH-NORTHEASTWARDS ALONG ODISHA COAST REACHING NEAR PURI AROUND 5<sup>TH</sup> DECEMBER NOON AS A DEEP DEPRESSION. SUBSEQUENTLY, IT IS LIKELY TO WEAKEN FURTHER AND CONTINUE TO MOVE NORTH-NORTHEASTWARDS ALONG ODISHA COAST TOWARDS WEST BENGAL COAST.**

Forecast track and intensity are given in the following table:

DATE/TIME(UTC)	POSITION (AT. °N/ LONG. °E)	MAXIMUM SUSTAINED SURFACE WIND SPEED (KMPH)	CATEGORY OF CYCLONIC DISTURBANCE
04.12.21/0300	16.4/84.8	70-80 gusting to 90	Cyclonic Storm
04.12.21/0600	16.6/84.8	65-75 gusting to 85	Cyclonic Storm
04.12.21/1200	17.2/84.8	60-70 gusting to 80	Cyclonic Storm
04.12.21/1800	17.9/85.0	55-65 gusting to 75	Deep Depression
05.12.21/0000	18.6/85.3	50-60 gusting to 70	Deep Depression
05.12.21/1200	19.6/86.0	45-55 gusting to 65	Depression

AS PER SATELLITE IMAGERY BASED ON 0300 UTC OF 4<sup>TH</sup> DEC, THE INTENSITY OF THE SYSTEM IS CHARACTERIZED AS T 2.5. MAXIMUM CONVECTION LIES IN THE NORTHEASTERN AND ADJOINING NORTHWESTERN SECTOR OF THE SYSTEM CENTRE. ASSOCIATED CLOUD BANDS WITH EMBEDDED MODERATE TO INTENSE CONVECTION ARE SEEN OVER NORTH COASTAL ANDHRA PRADESH, ODISHA, JHARKHAND AND GANGETIC WEST BENGAL.

ASSOCIATED BROKEN LOW & MEDIUM CLOUDS WITH EMBEDDED INTENSE TO VERY INTENSE CONVECTION LAY OVER WEST CENTRAL AND NORTHWEST BOB BETWEEN LATITUDE 15.5<sup>0</sup>N & 21.5<sup>0</sup>N AND LONGITUDE 83.0<sup>0</sup>E & 90.0<sup>0</sup>E, ODISHA, JHARKHAND AND SOUTHERN PARTS OF GANGETIC WEST BENGAL. THE MAXIMUM CLOUD TOP TEMPERATURE IS MINUS 93 DEG C.

THE MAXIMUM SUSTAINED SURFACE WIND SPEED IS 40 KNOTS GUSTING TO 50 KNOTS. THE ESTIMATED CENTRAL PRESSURE IS ABOUT 1000 HPA. SEA CONDITION IS HIGH OVER WESTCENTRAL BAY OF BENGAL AROUND THE SYSTEM CENTRE.

AT 0300 UTC, A BUOY NEAR 16.4°N/88.1°E REPORTED MAXIMUM SUSTAINED WIND SPEED (MSW) OF 140°/18KTS AND MEAN SEA LEVEL PRESSURE (MSLP) OF 1010 HPA. ANOTHER BOUY NEAR 13.4°/84.0° REPORTED MSW OF 280°/14KTS AND MSLP OF 1011 HPA. ANOTHER BOUY NEAR 14.0°/87.0° REPORTED MSW OF 220°/16KTS AND MSLP OF 1011 HPA.

**REMARKS:**

THE SEA SURFACE TEMPERATURE IS 28-29°C OVER WESTCENTRAL BOB AND ABOUT 27-28°C TOWARDS NORTHWEST BOB. TROPICAL CYCLONE HEAT POTENTIAL IS 80-100 KJ/CM<sup>2</sup> OVER WESTCENTRAL BOB AND IS GRADUALLY DECREASING TOWARDS EXTREME NORTHWEST BOB BECOMING 50-60 KJ/CM<sup>2</sup>. DEPTH OF 26°C ISOTHERM IS 100-120 M OVER WESTCENTRAL & ADJOINING NORTHWEST BOB. THE MADDEN JULIAN OSCILLATION INDEX IS CURRENTLY IN PHASE 6 WITH AMPLITUDE MORE THAN 1 AND WILL NOT SUPPORT ENHANCEMENT OF CONVECTIVE ACTIVITY OVER THE BAY OF BENGAL REGION.

MOST OF THE NUMERICAL MODELS ARE INDICATING THAT THE SYSTEM WILL START WEAKENING FROM NEXT 12 HOURS, MOVE NORTH-NORTHEASTWARDS OFF ODISHA COAST DURING 5<sup>TH</sup>/0000 UTC TO 6<sup>TH</sup> /0000 UTC AND REACH CLOSE TO WEST BENGAL –BANGLADESH COAST AS A LOW PRESSURE AREA THEREAFTER.

WIND SHEAR IS MODERTE AND IS ABOUT 10-15 KNOTS OVER THE SYSTEM AREA. IT IS BECOMING HIGH (20-30 KNOTS) OVER NORTHWEST BOB. POSITIVE LOW LEVEL VORTICITY IS ABOUT  $150 \times 10^{-6} \text{S}^{-1}$  AROUND THE SYSTEM CENTRE WITH VERTICAL EXTENSION UPTO 500 HPA LEVEL. LOW LEVEL CONVERGENCE IS  $30 \times 10^{-6} \text{S}^{-1}$  TO THE NORTH-NORTHEAST OF SYSTEM CENTRE. UPPER LEVEL DIVERGENCE IS  $30 \times 10^{-5} \text{S}^{-1}$  TO THE NORTH-NORTHEAST OF SYSTEM CENTRE. UPPER TROPOSPHERIC RIDGE RUNS ALONG 18°N. THE SYSTEM WILL MOVE NORTHWARDS FOR SOME TIME AND THEN NORTH-NORTHEASTWARDS ALONG ODISHA COAST AS IT IS LYING CLOSE TO THE WESTERN PERIPHERY OF ANTICYCLONE OVER MYANMAR REGION.

IN VIEW OF ALL THE ABOVE, THE SYSTEM IS LIKELY TO WEAKEN GRADUALLY AND MOVE NEARLY NORTHWARDS DURING NEXT 12 HOURS AND THEN NORTH-NORTHEASTWARDS ALONG ODISHA COAST REACHING NEAR PURI AROUND 5<sup>TH</sup> DECEMBER NOON AS A DEEP DEPRESSION. SUBSEQUENTLY, IT IS LIKELY TO WEAKEN FURTHER AND CONTINUE TO MOVE NORTH-NORTHEASTWARDS ALONG ODISHA COAST TOWARDS WEST BENGAL COAST.

NEXT BULLETIN WILL BE ISSUED AT 0900 UTC OF 4<sup>th</sup> DECEMBER 2021.

**(SUNITHA DEVI S)**  
**Scientist-F, RSMC, New Delhi**



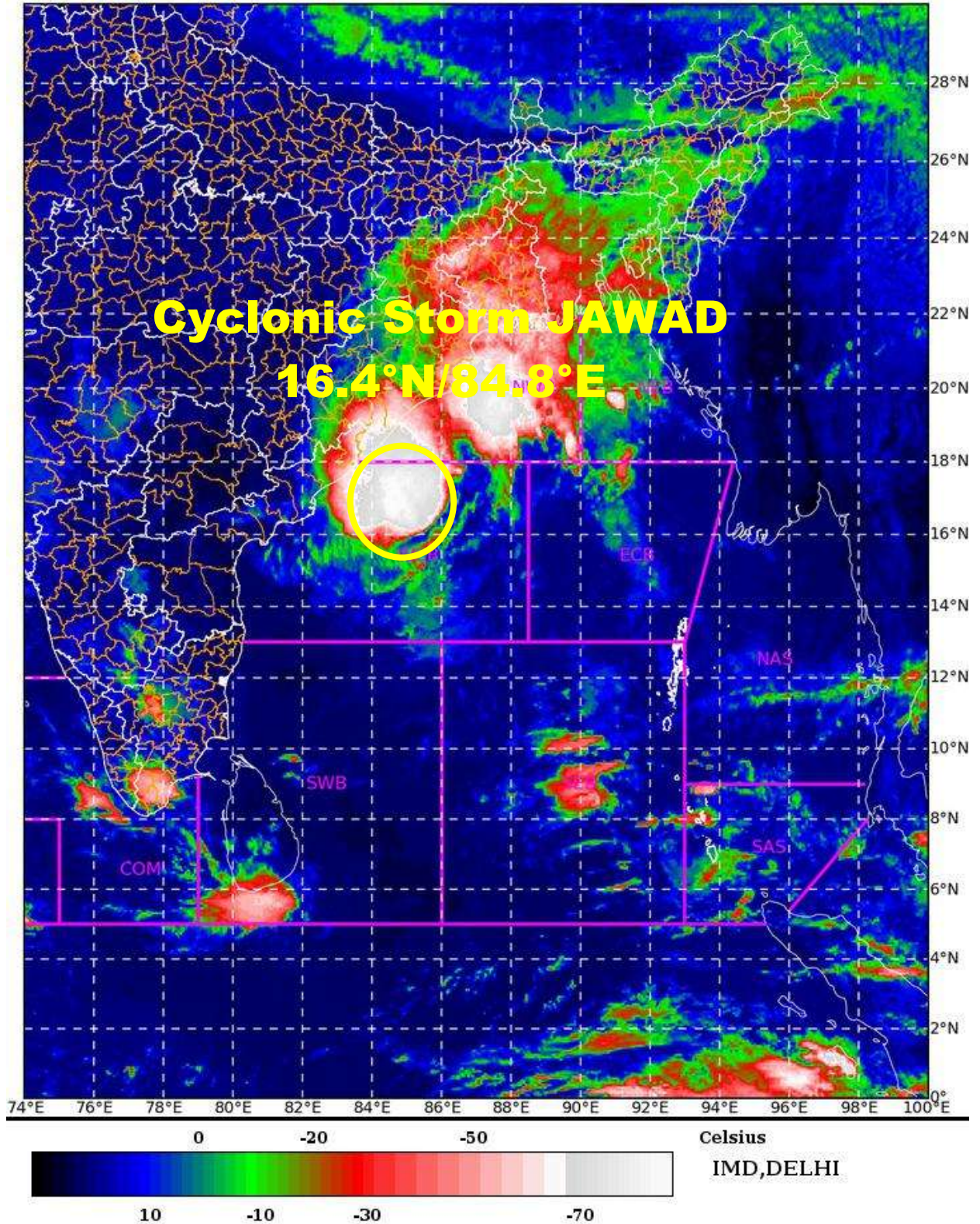
SAT : INSAT-3D IMG

04-12-2021/(0430 to 0457) GMT

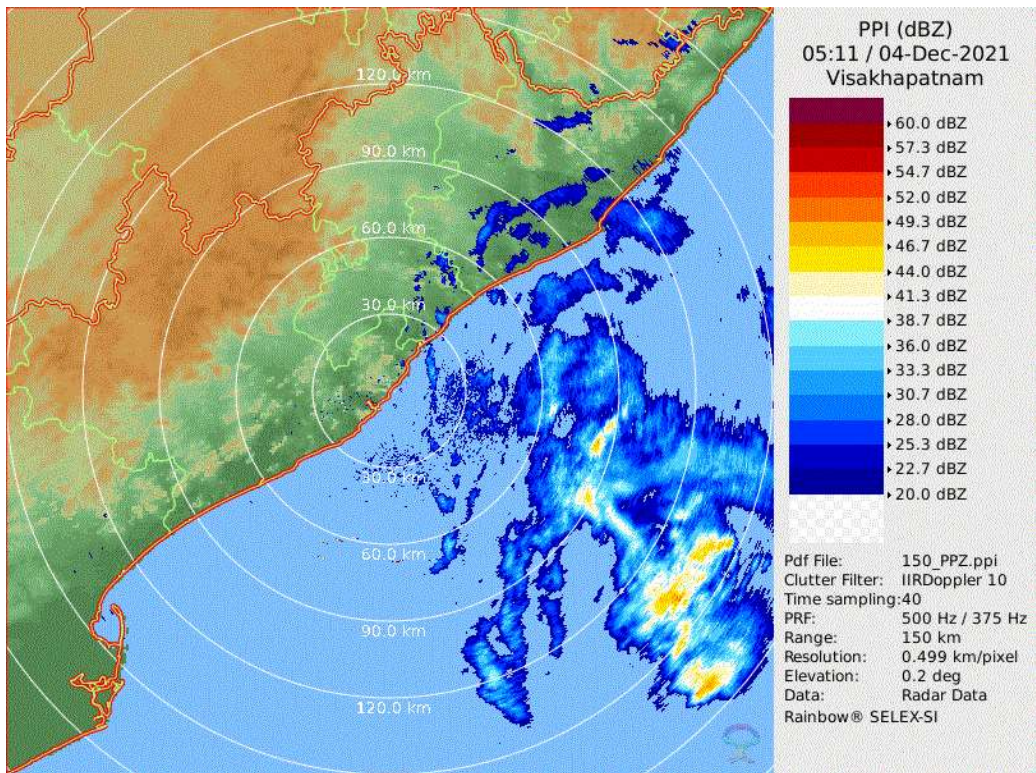
IMG\_TIR1\_TEMP 10.8 um

04-12-2021/(1000 to 1027) IST

L1C Mercator



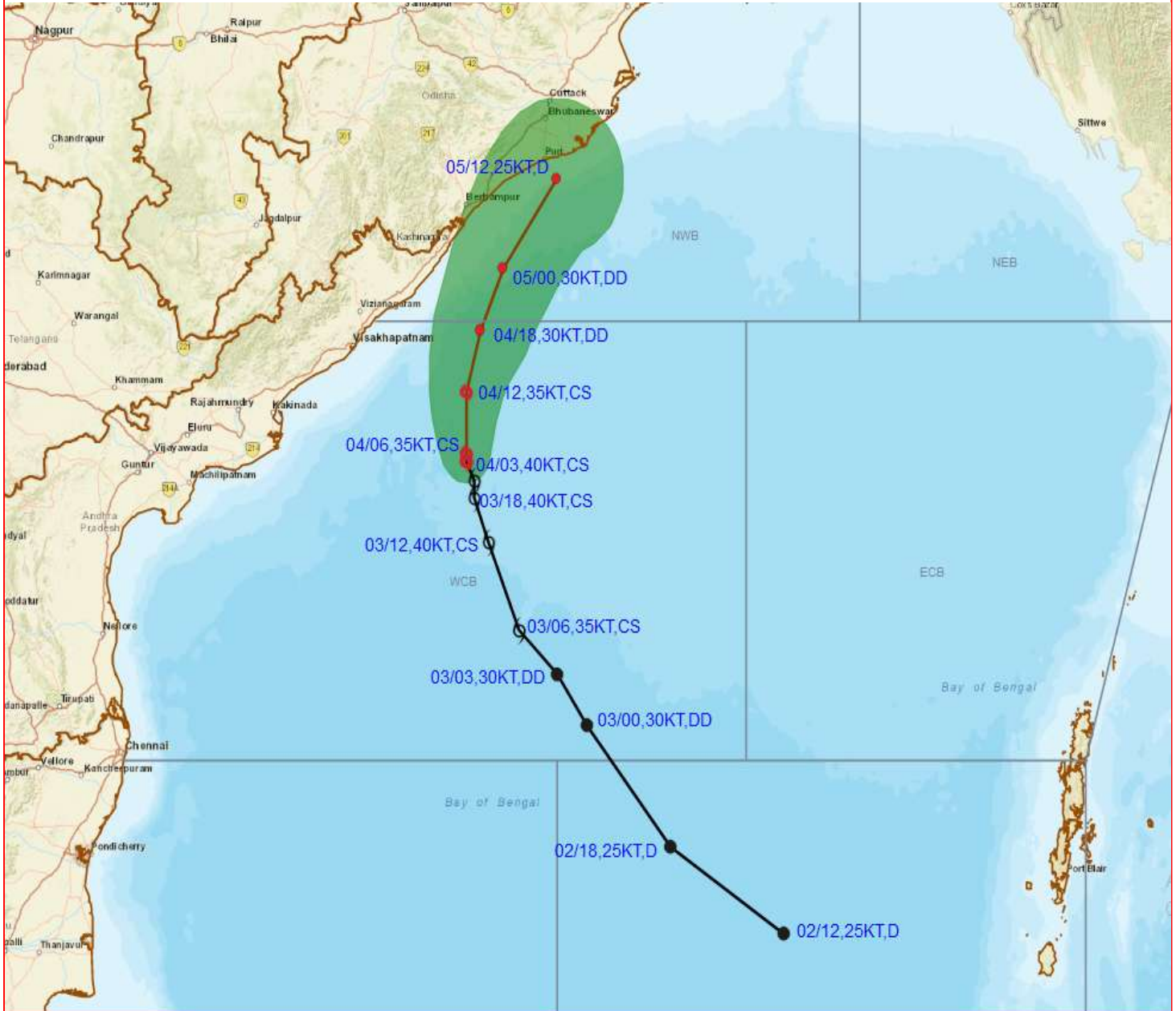




**Doppler Weather RADAR imagery from Vishakhapatnam**



# OBSERVED AND FORECAST TRACK ALONGWITH CONE OF UNCERTAINTY OF CYCLONIC STORM 'JAWAD' OVER WESTCENTRAL BAY OF BENGAL BASED ON 0300 UTC OF 4<sup>th</sup> DECEMBER, 2021



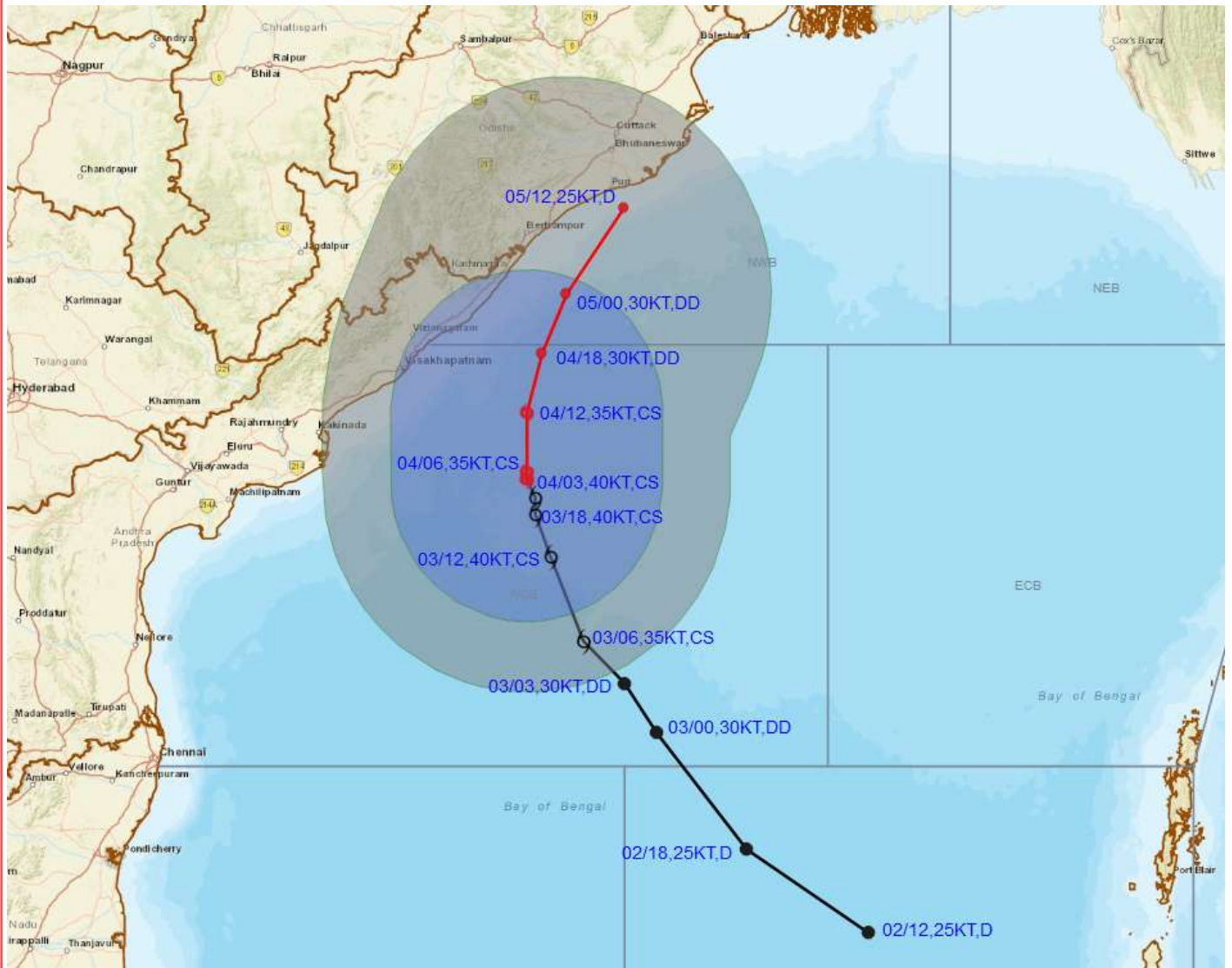
**DATE/TIME IN UTC**  
**IST=UTC + 0530**  
**L: LOW PRESSURE AREA**  
**WML: WELL MARKED LOW PRESSURE AREA**  
**D: DEPRESSION (17-27 KT)**  
**DD: DEEP DEPRESSION (28-33 KT)**  
**CS: CYCLONIC STORM (34-47 KT)**  
**SCS: SEVERE CYCLONIC STORM (48-63KT)**  
**VSCS: VERY SEVERE CYCLONIC STORM (64-89 KT)**  
**ESCS: EXTREMELY SEVERE CYCLONIC STORM (90-119 KT)**  
**SuCS: SUPER CYCLONIC STORM ( $\geq$  120 KT)**

- LESS THAN 34 KT
- 34-47 KT
- $\geq$  48 KT
- OBSERVED TRACK
- FORECAST TRACK
- CONE OF UNCERTAINTY





# OBSERVED AND FORECAST TRACK ALONGWITH QUADRANT WIND DISTRIBUTION OF CYCLONIC STORM 'JAWAD' OVER WESTCENTRAL BAY OF BENGAL BASED ON 0300 UTC OF 4<sup>th</sup> DECEMBER, 2021



**DATE/TIME IN UTC**  
**IST=UTC + 0530**  
**L: LOW PRESSURE AREA**  
**WML: WELL MARKED LOW PRESSURE AREA**  
**D: DEPRESSION (17-27 KT)**  
**DD: DEEP DEPRESSION (28-33 KT)**  
**CS: CYCLONIC STORM (34-47 KT)**  
**SCS: SEVERE CYCLONIC STORM (48-63KT)**  
**VSCS: VERY SEVERE CYCLONIC STORM (64-89 KT)**  
**ESCS: EXTREMELY SEVERE CYCLONIC STORM (90-119 KT)**  
**SuCS: SUPER CYCLONIC STORM (≥ 120 KT)**

● LESS THAN 34 KT  
 ◉ 34-47 KT  
 ◐ ≥ 48 KT  
 — OBSERVED TRACK  
 — FORECAST TRACK  
 ◉ CONE OF UNCERTAINTY  
**AREA OF MAXIMUM SUSTAINED WIND SPEED:**  
 ◉ 28-33 KT (52-61 KMPH)  
 ◉ 34-49 KT (62-91 KMPH)  
 ◉ 50-63 KT (92-117 KMPH)  
 ◉ ≥ 64 KT (≥118 KMPH)

### IMPACT OVER THE SEA

MSW (knot/kmph)	Impact	Action
28-33 (52-61)	Very rough seas	Total suspension of fishing operations
34-49 (62-91)	High to very high seas	Total suspension of fishing operations
50-63 (92-117)	Very high seas	Total suspension of fishing operations
≥ 64 (≥118)	Phenomenal	Total suspension of fishing operations