



**REGIONAL SPECIALISED METEOROLOGICAL CENTRE-TROPICAL CYCLONES, NEW DELHI
TROPICAL WEATHER OUTLOOK**

DEMS-RSMC TROPICAL CYCLONES NEW DELHI DATED 15.10.2021

TROPICAL WEATHER OUTLOOK FOR NORTH INDIAN OCEAN (THE BAY OF BENGAL AND ARABIAN SEA) VALID FOR NEXT 120 HOURS ISSUED AT 0600 UTC OF 15.10.2021 BASED ON 0300 UTC OF 15.10.2021.

BAY OF BENGAL:

YESTERDAY'S LOW PRESSURE AREA OVER NORTHERN PARTS OF CENTRAL BAY OF BENGAL (BOB) MOVED WEST-NORTHWESTWARDS AND LAY OVER WEST-CENTRAL AND ADJOINING NORTHWEST BOB OFF NORTH ANDHRA PRADESH – SOUTH ODISHA COASTS AT 0300 UTC OF TODAY, THE 15TH OCTOBER. ASSOCIATED CYCLONIC CIRCULATION EXTENDS UPTO 5.8 KM ABOVE MEAN SEA LEVEL TILTING SOUTHWESTWARDS WITH HEIGHT.

IN ASSOCIATION WITH THE LOW PRESSURE AREA, SCATTERED TO BROKEN LOW AND MEDIUM CLOUDS WITH EMBEDDED INTENSE TO VERY INTENSE CONVECTION LAY OVER NORTHERN PARTS OF WESTCENTRAL BOB, NORTH COASTAL ANDHRA PRADESH AND ADJOINING SOUTH COASTAL ODISHA. MINIMUM CLOUD TOP TEMPERATURE IS MINUS 93 DEG C.

SCATTERED LOW AND MEDIUM CLOUDS WITH EMBEDDED INTENSE TO VERY INTENSE CONVECTION LAY OVER WESTCENTRAL BOB OFF NORTH COASTAL ANDHRA PRADESH, SOUTH BOB, NORTH ANDAMAN SEA, GULF OF MARTABAN, TENASSERIM COAST AND ARAKAN COAST. SCATTERED LOW AND MEDIUM CLOUDS WITH EMBEDDED MODERATE TO INTENSE CONVECTION LAY OVER REST OF BOB.

PROBABILITY OF CYCLOGENESIS (FORMATION OF DEPRESSION) DURING NEXT 120 HRS:

24 HOURS	24-48 HOURS	48-72 HOURS	72-96 HOURS	96-120 HOURS
NIL	NIL	NIL	NIL	NIL

ARABIAN SEA:

YESTERDAY'S LOW PRESSURE AREA OVER EAST-CENTRAL & ADJOINING SOUTHEAST ARABIAN SEA OFF LAKSHADWEEP AREA MOVED EAST-SOUTHEASTWARDS AND LAY OVER LAKSHADWEEP AREA & ADJOINING SOUTHEAST ARABIAN SEA AT 0300 UTC OF TODAY, THE 15TH OCTOBER. ASSOCIATED CYCLONIC CIRCULATION EXTENDS UPTO 3.6 KM ABOVE MEAN SEA LEVEL.

IN ASSOCIATION WITH THE LOW PRESSURE AREA, SCATTERED LOW AND MEDIUM CLOUDS WITH EMBEDDED INTENSE TO VERY INTENSE CONVECTION LAY OVER SOUTHEAST AND ADJOINING EASTCENTRAL ARABIAN SEA BET LAT 9.0N AND 13.0N & LONG 68.0E AND 73.0E & LAKSHADWEEP ISLANDS. MINIMUM CLOUD TOP TEMPERATURE IS MINUS 90 DEG C.

SCATTERED LOW AND MEDIUM CLOUDS WITH EMBEDDED INTENSE TO VERY INTENSE CONVECTION LAY OVER EASTCENTRAL AND ADJOINING SOUTHEAST ARABIAN SEA BET LAT 9.0N & 13.0N AND LONG 66.0E & 72.0E & ALSO OVER LAKSHADWEEP ISLANDS.

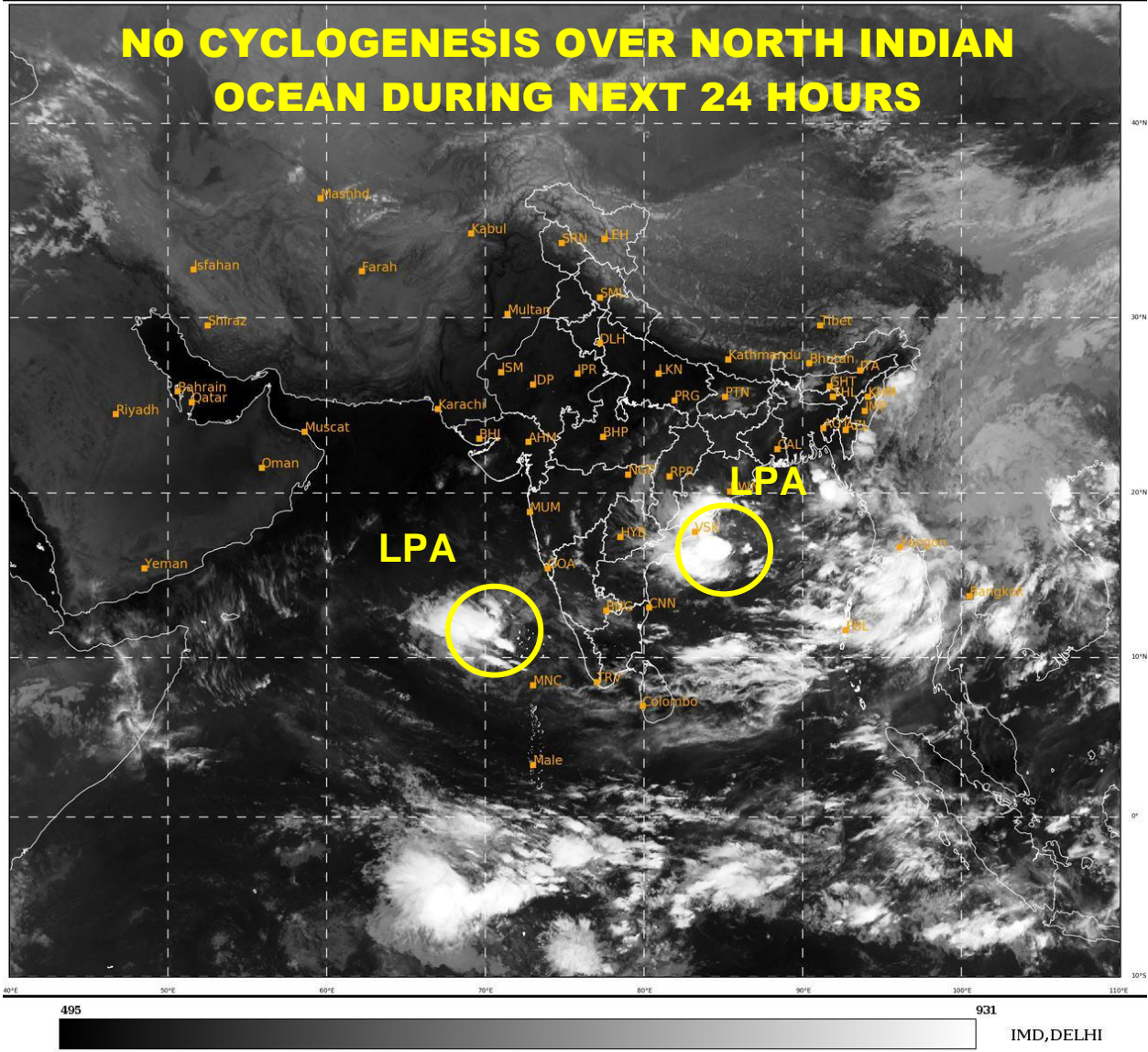
PROBABILITY OF CYCLOGENESIS (FORMATION OF DEPRESSION) DURING NEXT 120 HRS:

24 HOURS	24-48 HOURS	48-72 HOURS	72-96 HOURS	96-120 HOURS
NIL	NIL	NIL	NIL	NIL

REMARKS: NIL

SAT : INSAT-3D IMG
 IMG_TIR1 10.8 um
 LIC Mercator

15-10-2021/(0300 to 0326) GMT
 15-10-2021/(0830 to 0856) IST



*LPA STANDS FOR LOW PRESSURE AREA