



**REGIONAL SPECIALISED METEOROLOGICAL CENTRE -TROPICAL CYCLONES, NEW DELHI**  
**TROPICAL WEATHER OUTLOOK**

**DEMS-RSMC TROPICAL CYCLONES NEW DELHI DATED 17.09.2025**

**TROPICAL WEATHER OUTLOOK FOR THE NORTH INDIAN OCEAN (THE BAY OF BENGAL AND THE ARABIAN SEA) VALID FOR THE NEXT 168 HOURS ISSUED AT 0600 UTC OF 17.09.2025 BASED ON 0300 UTC OF 17.09.2025.**

**BAY OF BENGAL:**

Yesterday's upper air cyclonic circulation over southeast Bay of Bengal became less marked at 0300 UTC of today, 17th September, 2025.

Scattered low and medium clouds with embedded intense to very intense convection lay over central & south Bay of Bengal and Andaman Sea. Scattered low and medium clouds with embedded isolate moderate to intense convection lay over North Bay of Bengal.

**\*PROBABILITY OF CYCLOGENESIS (FORMATION OF DEPRESSION) DURING NEXT 168 HRS**

24 HOURS	24-48 HOURS	48-72 HOURS	72-96 HOURS	96-120 HOURS	120-144 HOURS	144-168 HOURS
NIL	NIL	NIL	NIL	NIL	NIL	NIL

**\*NOTE: EVERY 24HR FORECAST IS VALID UPTO 0300 UTC (0830 IST) OF NEXT DAY**

**ARABIAN SEA:**

Scattered to broken low and medium clouds with embedded intense to very intense convection lay over southeast Arabian Sea, Lakshadweep Island area. Scattered low and medium clouds with embedded moderate to intense convection lay over eastcentral Arabian Sea and isolate weak to moderate convection lay over rest of Arabian Sea & Comorin area.

**\*PROBABILITY OF CYCLOGENESIS (FORMATION OF DEPRESSION) DURING NEXT 168 HRS**

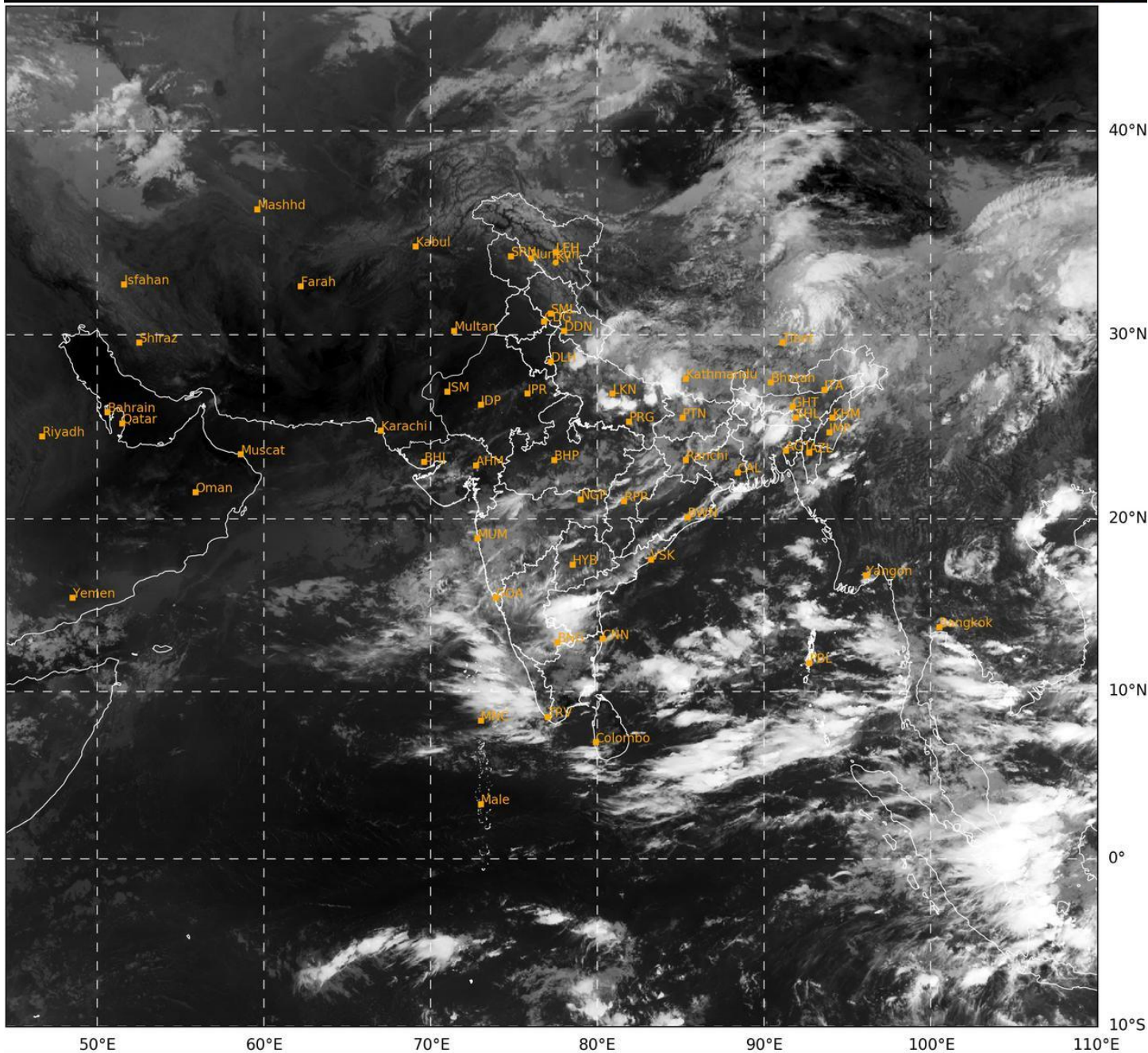
24 HOURS	24-48 HOURS	48-72 HOURS	72-96 HOURS	96-120 HOURS	120-144 HOURS	144-168 HOURS
NIL	NIL	NIL	NIL	NIL	NIL	NIL

**\*NOTE: EVERY 24HR FORECAST IS VALID UPTO 0300 UTC (0830 IST) OF NEXT DAY**

**REMARKS:** NIL

SAT : INSAT-3DR IMG  
IMG\_TIR1 10.8 um  
L1C Mercator

17-09-2025/(0315 to 0342) GMT  
17-09-2025/(0845 to 0912) IST



461

948

IMD, DELHI