



**REGIONAL SPECIALISED METEOROLOGICAL CENTRE-TROPICAL CYCLONES, NEW DELHI
TROPICAL WEATHER OUTLOOK**

DEMS-RSMC TROPICAL CYCLONES NEW DELHI DATED 19.11.2020

TROPICAL WEATHER OUTLOOK FOR NORTH INDIAN OCEAN (THE BAY OF BENGAL AND ARABIAN SEA) VALID FOR NEXT 120 HOURS ISSUED AT 0600 UTC OF 19.11.2020 BASED ON 0300 UTC OF 19.11.2020 .

BAY OF BENGAL:

SCATTERED LOW AND MEDIUM CLOUDS WITH EMBEDDED INTENSE TO VERY INTENSE CONVECTION LAY OVER SOUTH PARTS OF SOUTHEAST BAY OF BENGAL & SOUTH ANDAMAN SEA. SCATTERED LOW AND MEDIUM CLOUDS WITH EMBEDDED ISOLATED MODERATE TO INTENSE CONVECTION LAY OVER REST SOUTH BAY OF BENGAL.

PROBABILITY OF CYCLOGENESIS(FORMATION OF DEPRESSION) DURING NEXT 120 HRS:

24 HOURS	24-48 HOURS	48-72 HOURS	72-96 HOURS	96-120 HOURS
NIL	NIL	NIL	NIL	NIL

ARABIAN SEA:

A LOW PRESSURE AREA HAS FORMED OVER CENTRAL PARTS OF SOUTH ARABIAN SEA AT 0300 UTC OF TODAY, THE 19TH NOVEMBER, 2020. IT IS LIKELY TO MOVE WEST-NORTHWESTWARDS AND CONCENTRATE INTO A DEPRESSION OVER SOUTHWEST ARABIAN SEA DURING NEXT 48 HOURS.

SCATTERED TO BROKEN LOW AND MEDIUM CLOUDS WITH EMBEDDED INTENSE TO VERY INTENSE CONVECTION LAY OVER SOUTH ARABIAN SEA AND ALSO OVER SOUTH PARTS OF EASTCENTRAL ARABIAN SEA & COMORIN.

PROBABILITY OF CYCLOGENESIS(FORMATION OF DEPRESSION) DURING NEXT 120 HRS :

24 HOURS	24-48 HOURS	48-72 HOURS	72-96 HOURS	96-120 HOURS
NIL	LOW	MODERATE	HIGH	HIGH

REMARKS:

THE MADDEN JULIAN OSCILLATION (MJO) INDEX IS CURRENTLY IN PHASE 2 WITH AMPLITUDE MORE THAN 1. IT WILL CONTINUE IN SAME PHASE TILL 20TH NOVEMBER WITH AMPLITUDE REMAINING MORE THAN 1. THEREAFTER, IT WILL MOVE TO PHASE 3 WITH AMPLITUDE BECOMING LESS THAN 1. THUS MJO WILL SUPPORT ENHANCEMENT OF CONVECTIVE ACTIVITY OVER THE NORTH INDIAN OCEAN INCLUDING BAY OF BENGAL (BOB) AND ARABIAN SEA (AS) FOR NEXT 5 DAYS.

PROBABILITY OF CYCLOGENESIS (FORMATION OF DEPRESSION):NIL: 0%, LOW: 1-25%, FAIR: 26-50%, MODERATE: 51-75% AND HIGH: 76-100%

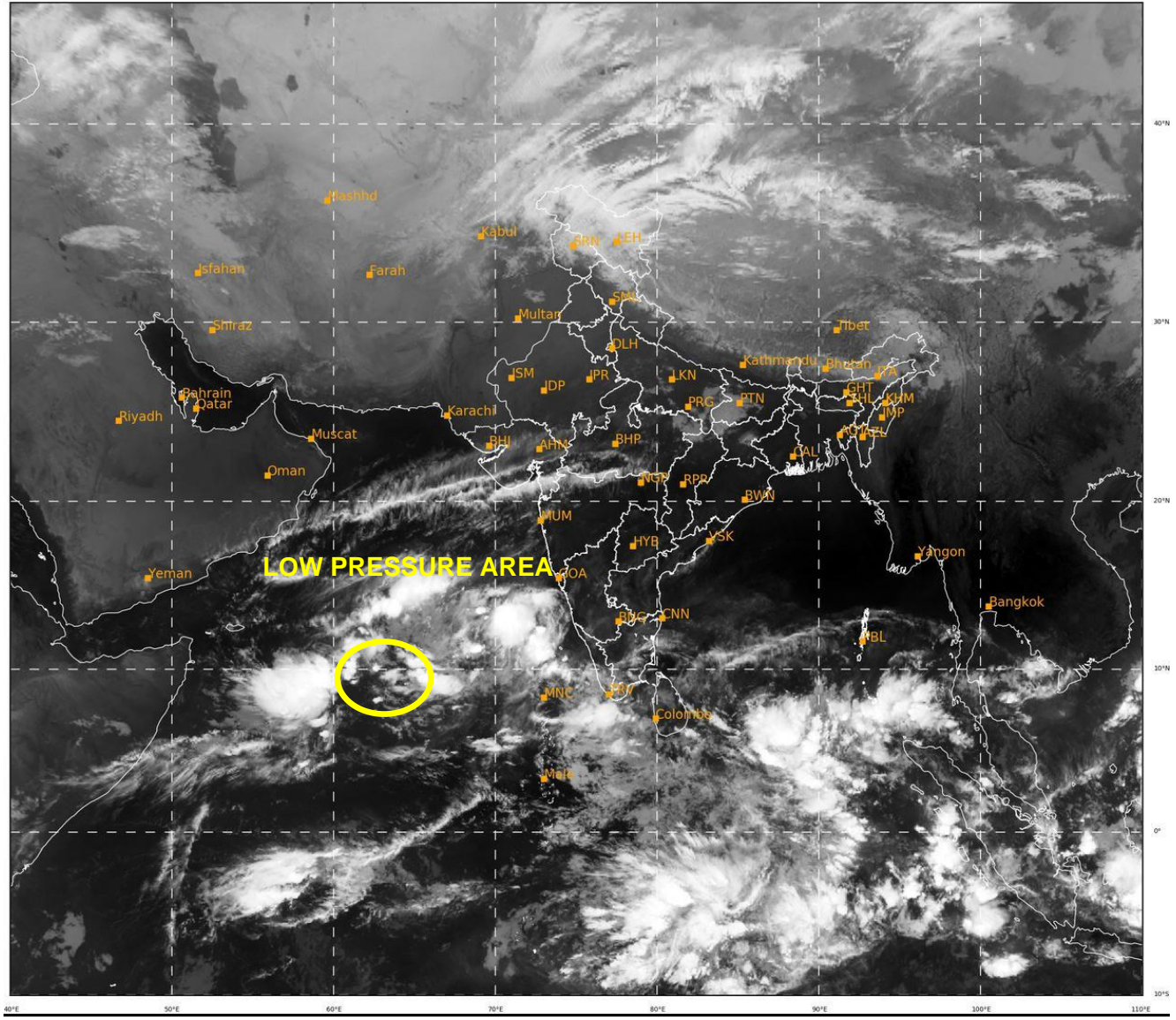
This is a guidance Bulletin for the WMO/ESCAP Panel Member countries,. Please visit respective National websites for Country specific Bulletins

CONSIDERING THE SEA CONDITIONS, SST IS AROUND 29-30°C OVER MOST PARTS OF SOUTH AND EASTCENTRAL ARABIAN SEA (AS). IT IS SLIGHTLY LESS (26-28°C) OVER WESTCENTRAL & NORTH AS. HIGH TCHP (100-120 KJ/CM²) PREVAILS OVER COMORIN AREA AND ADJOINING SOUTHWEST BOB OFF SOUTH SRI LANKA COAST AND KERALA COAST. TCHP IS AROUND 60-80 KJ/CM² OVER MAJOR PARTS OF SOUTH AS EXCEPT OFF NORTH SOMALIA COAST. TCHP IS LESS THAN 50KJ/CM² TO THE WEST OF 68°E AND NORTH 11°N OVER THE CENTRAL & NORTH AS AND 60 – 80 KJ/CM² OVER REMAINING PARTS OF EASTCENTRAL & NORTHEAST AS.

CONSIDERING THE ENVIRONMENTAL CONDITIONS, POSITIVE RELATIVE VORTICITY (25-50X10⁻⁶S⁻¹) PREVAILS OVER SOUTHEAST AND ADJOINING SOUTHWEST & WESTCENTRAL AS WITH VERTICAL EXTENSION UPTO 200 HPA LEVEL. AREA OF POSITIVE DIVERGENCE (30X10⁻⁵S⁻¹) PREVAILS OVER SOUTHWEST AS. AREA OF POSITIVE CONVERGENCE ZONE (05-10 X 10⁻⁵S⁻¹) PREVAILS OVER CENTRAL PARTS OF SOUTH AS. THE VERTICAL WIND SHEAR (VWS) IS LOW TO MODERATE (5-20 KTS) OVER CENTRAL PARTS OF AS AND ADJOINING SOUTH AS. THE UPPER TROPOSPHERIC RIDGE AT 200 HPA RUNS ALONG 15°N OVER THE AS.

SOME MODELS LIKE IMD GFS, NCEP GFS, ECMWF, NCUM AND NEPS ARE INDICATING DEVELOPMENT OF A DEPRESSION OVER SOUTHWEST AS. HOWEVER THERE IS VARIATION W.R.T. DATE OF CYCLOGENESIS WITH ECMWF INDICATING DEPRESSION AROUND 21ST, GFS AROUND & NCUM AROUND 22ND AND NEPS AROUND 23RD. HOWEVER, ALL THE MODELS ARE UNANIMOUS ABOUT WEST-NORTHWESTWARD MOVEMENT OF THE SYSTEM TOWARDS GULF OF ADEN. THERE IS ALSO VARIATION W.R.T. INTENSIFICATION OF THE SYSTEM ALSO. MOST OF TE MODELS ARE INDICATING INTENSIFICATION UPTO DEPRESSION/DEEP DEPRESSION. ECMWF IS INDICATING HIGHER INTENSIFICATION UPTO CYCLONIC STORM STAGE.

CONSIDERING ALL THE ABOVE, THE EXISTING LOW PRESSURE AREA OVER CENTRAL PARTS OF SOUTH AS IS EXPECTED TO MOVE WEST-NORTHWESTWARDS AND INTENSIFY INTO A DEPRESSION OVER THE SOUTHWEST AS DURING NEXT 48 HOURS.



489

935

IMD, DELHI

PROBABILITY OF CYCLOGENESIS (FORMATION OF DEPRESSION):NIL: 0%, LOW: 1-25%, FAIR: 26-50%, MODERATE: 51-75% AND HIGH: 76-100%

✚ This is a guidance Bulletin for the WMO/ESCAP Panel Member countries,. Please visit respective National websites for Country specific Bulletins