



**REGIONAL SPECIALISED METEOROLOGICAL CENTRE-TROPICAL CYCLONES, NEW DELHI
TROPICAL WEATHER OUTLOOK**

DEMS-RSMC TROPICAL CYCLONES NEW DELHI DATED 16.09.2020

TROPICAL WEATHER OUTLOOK FOR NORTH INDIAN OCEAN (THE BAY OF BENGAL AND ARABIAN SEA) VALID FOR NEXT 120 HOURS ISSUED AT 0600 UTC OF 16.09.2020 BASED ON 0300 UTC OF 16.09.2020.

BAY OF BENGAL:

YESTERDAYS LOW PRESSURE AREA HAS BECOME LOW LEVEL CIRCULATION (LLC) NOW LIES OVER TELANGANA & ADJOINING SOUTH CHHATTISGARH. SCATTERED LOW/MEDIUM CLOUDS WITH EMBEDDED MODERATE TO INTENSE CONVECTION LAYOVER TELANGANA AND ADJOINING COASTAL ANDHRA PRADESH AND NEIGHBORHOOD IN ASSOCIATION WITH THE LOW LEVEL CIRCULATION (LLC). ANOTHER LOW PRESSURE AREA IS LIKELY TO FORM OVER NORTHEAST BAY OF BENGAL & NEIGHBOURHOOD AROUND 20TH SEPTEMBER, 2020.

SCATTERED LOW AND MEDIUM CLOUDS WITH EMBEDDED INTENSE TO VERY INTENSE CONVECTION LAYOVER WESTCENTRAL BAY OF BENGAL OFF ANDHRA PRADESH COAST AND SOUTH BAY OF BENGAL. SCATTERED LOW/MEDIUM CLOUDS WITH EMBEDDED MODERATE TO INTENSE CONVECTION LAYOVER REST BAY OF BENGAL AND ANDAMAN SEA.

PROBABILITY OF CYCLOGENESIS DURING NEXT 120 HRS:

24 HOURS	24-48 HOURS	48-72 HOURS	72-96 HOURS	96-120 HOURS
NIL	NIL	NIL	NIL	NIL

ARABIAN SEA:

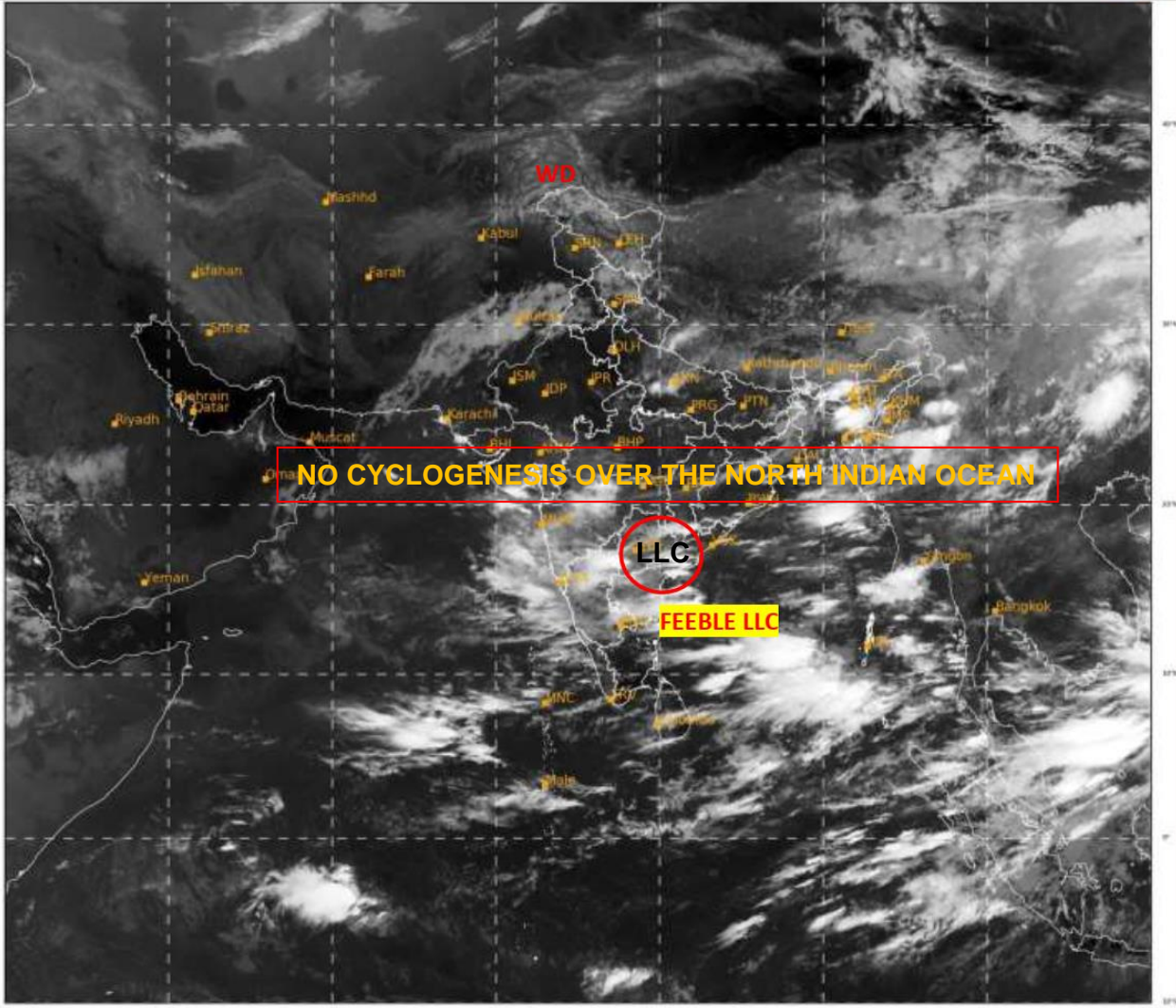
SCATTERED LOW AND MEDIUM CLOUDS WITH EMBEDDED MODERATE TO INTENSE CONVECTION LAYOVER EASTCENTRAL AND SOUTHEAST ARABIAN SEA.

PROBABILITY OF CYCLOGENESIS DURING NEXT 120 HRS:

24 HOURS	24-48 HOURS	48-72 HOURS	72-96 HOURS	96-120 HOURS
NIL	NIL	NIL	NIL	NIL

REMARKS: NIL

PROBABILITY OF CYCLOGENESIS (FORMATION OF DEPRESSION)
NIL: 0%, LOW: 1-25%, FAIR: 26-50%, MODERATE: 51-75% AND HIGH: 76-100%



427

930

IMD, DELHI

PROBABILITY OF CYCLOGENESIS (FORMATION OF DEPRESSION)
NIL: 0%, LOW: 1-25%, FAIR: 26-50%, MODERATE: 51-75% AND HIGH: 76-100%