



**REGIONAL SPECIALISED METEOROLOGICAL CENTRE -TROPICAL CYCLONES, NEW DELHI  
TROPICAL WEATHER OUTLOOK**

**DEMS-RSMC TROPICAL CYCLONES NEW DELHI DATED 30.06.2026**

**TROPICAL WEATHER OUTLOOK FOR THE NORTH INDIAN OCEAN (THE BAY OF BENGAL AND THE ARABIAN SEA) VALID FOR THE NEXT 168 HOURS ISSUED AT 0600 UTC OF 30.06.2026 BASED ON 0300 UTC OF 30.06.2026.**

**BAY OF BENGAL:**

A fresh upper air cyclonic circulation formed over north Bay of Bengal adjoining south Bangladesh between 1.5 & 5.8 km above mean sea level tilting southwestwards with height at 0000 UTC of today and persists over same region at 0300 UTC of today, 30th June 2026. Under its influence, a Low-Pressure Area is likely to form over northwest Bay of Bengal & neighborhood around 3rd July, 2026.

Scattered to broken low to medium clouds with embedded intense to very intense convection lay over north and adjoining central Bay of Bengal, southeast Bay of Bengal, Andaman Sea, Arakan Coast, Gulf of Martaban, and Tenasserim Coast. Scattered low to medium clouds with embedded isolated weak to moderate convection lay over southwest Bay of Bengal.

**\*PROBABILITY OF CYCLOGENESIS (FORMATION OF DEPRESSION) DURING NEXT 168 HRS)**

24 HOURS	24-48 HOURS	48-72 HOURS	72-96 HOURS	96-120 HOURS	120-144 HOURS	144-168 HOURS
NIL	NIL	NIL	NIL	NIL	NIL	NIL

**\*NOTE: EVERY 24HR FORECAST IS VALID UPTO 0300 UTC (0830 IST) OF NEXT DAY**

**ARABIAN SEA:**

Yesterday's upper air cyclonic circulation over Eastcentral Arabian sea off Maharashtra coast at 5.8 km above mean sea level has become less marked at 0000 UTC of today, 30th June, 2026.

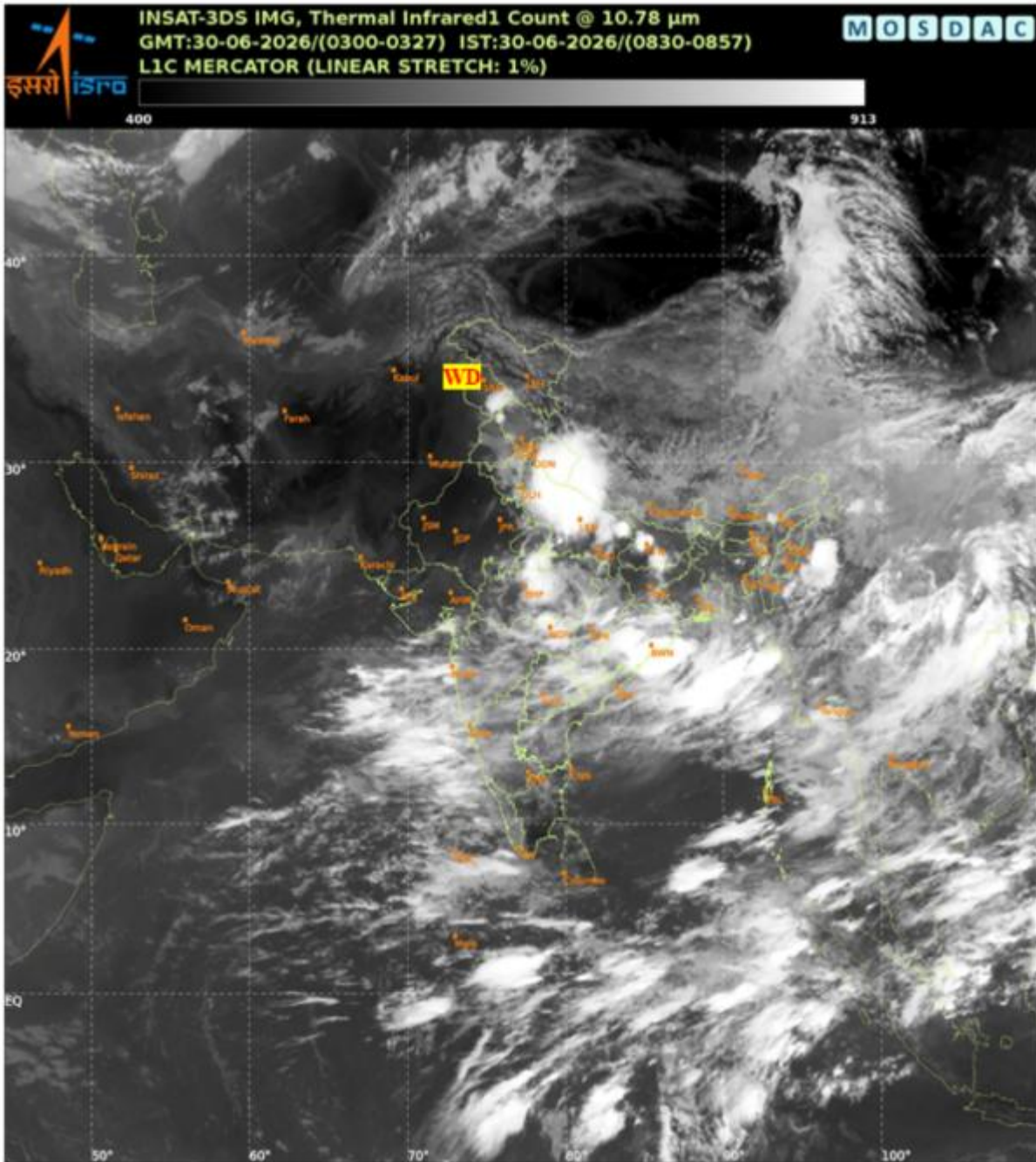
Scattered to broken low to medium clouds with embedded intense to very intense convection lay over east-central and southeast Arabian Sea, Lakshadweep Islands area, and Maldives. Scattered low to medium clouds with embedded moderate to intense convection lay over Gulf of Cambay, while scattered low to medium clouds with embedded isolated weak to moderate convection lay over remaining parts of Arabian Sea and Comorin area.

**\*PROBABILITY OF CYCLOGENESIS (FORMATION OF DEPRESSION) DURING NEXT 168 HRS:**

24 HOURS	24-48 HOURS	48-72 HOURS	72-96 HOURS	96-120 HOURS	120-144 HOURS	144-168 HOURS
NIL	NIL	NIL	NIL	NIL	NIL	NIL

**\*NOTE: EVERY 24HR FORECAST IS VALID UPTO 0300 UTC (0830 IST) OF NEXT DAY**

**REMARKS:** NIL



Cloud distribution: (a) Isolated: <25%, Scattered:25-50%, Broken: 51-75%, Solid:>75%, Convection Intensity: (a) Weak: Cloud Top Temperature(CTT)>-25°C, (b) Moderate: CTT:-25°Cto-40°C, (c) Intense: CTT: -41°Cto -70°C and (d) Very Intense::Less than -70°C Probability of cyclogenesis (formation of depression) :NIL:0%, LOW:1-33%, MODERATE:34-66% and HIGH:67-100%  
 This is a guidance Bulletin for WMO/ESCAP Panel Member countries. Visit respective National websites for Country specific Bulletins.