



**REGIONAL SPECIALISED METEOROLOGICAL CENTRE-TROPICAL CYCLONES, NEW DELHI
TROPICAL WEATHER OUTLOOK**

DEMS-RSMC TROPICAL CYCLONES NEW DELHI DATED 16.07.2023

TROPICAL WEATHER OUTLOOK FOR NORTH INDIAN OCEAN (THE BAY OF BENGAL AND THE ARABIAN SEA) VALID FOR NEXT 168 HOURS ISSUED AT 0600 UTC OF 16.07.2023 BASED ON 0300 UTC OF 16.07.2023.

BAY OF BENGAL:

UNDER THE INFLUENCE OF YESTERDAY'S CYCLONIC CIRCULATION OVER NORTHWEST BAY OF BENGAL AND ADJOINING NORTH ODISHA AND WEST BENGAL COASTS, A LOW PRESSURE AREA HAS FORMED OVER NORTH ODISHA AND ADJOINING GANGETIC WEST BENGAL & JHARKHAND. ASSOCIATED CYCLONIC CIRCULATION EXTENDS UPTO MID TROPOSPHERIC LEVELS TILTING SOUTHWESTWARDS WITH HEIGHT. IT IS LIKELY TO MOVES WEST-NORTHWESTWARDS ACROSS JHARKHAND DURING NEXT 2 DAYS.

ANOTHER CYCLONIC CIRCULATION IS LIKELY TO FORM OVER NORTHWEST BAY OF BENGAL AROUND 18TH JULY, 2023.

SCATTERED TO BROKEN LOW AND MEDIUM CLOUDS WITH EMBEDDED INTENSE TO VERY INTENSE CONVECTION LAY OVER NORTH AND CENTRAL BAY OF BENGAL. SCATTERED LOW AND MEDIUM CLOUDS WITH EMBEDDED MODERATE TO INTENSE CONVECTION LAY OVER SOUTH BAY OF BENGAL AND ANDAMAN SEA.

PROBABILITY OF CYCLOGENESIS (FORMATION OF DEPRESSION) DURING NEXT 168 HRS:

24 HOURS	24-48 HOURS	48-72 HOURS	72-96 HOURS	96-120 HOURS	120-144 HOURS	144-168 HOURS
NIL	NIL	NIL	LOW	LOW	MODERATE	MODERATE

ARABIAN SEA:

SCATTERED LOW AND MEDIUM CLOUDS WITH EMBEDDED WEAK TO MODERATE CONVECTION LAY OVER EAST ARABIAN, GULF OF CAMBAY AND LAKSHADWEEP ISLAND AREA.

PROBABILITY OF CYCLOGENESIS (FORMATION OF DEPRESSION) DURING NEXT 168 HRS:

24 HOURS	24-48 HOURS	48-72 HOURS	72-96 HOURS	96-120 HOURS	120-144 HOURS	144-168 HOURS
NIL	NIL	NIL	NIL	NIL	NIL	NIL

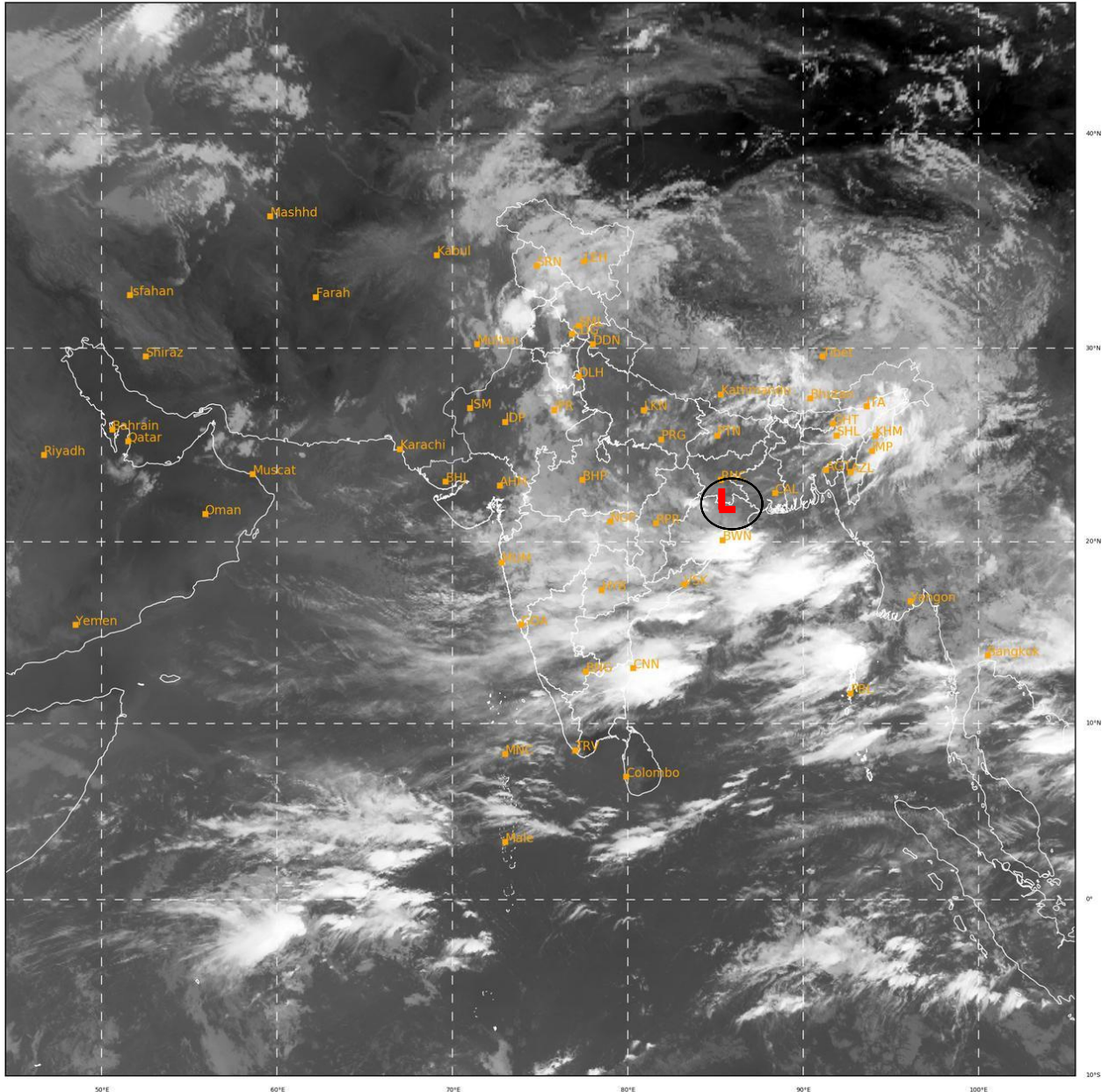
REMARK:

Cloud distribution: (a) Isolated: <25%, Scattered:25-50%, Broken: 51-75%, Solid:>75%, Convection Intensity: (a) Weak: Cloud Top Temperature (CTT) >-25°C, (b) Moderate: CTT: - 25°C to -40°C, (c) Intense: CTT: - 41°C to -70°C and (d) Very Intense: : Less than -70°C
PROBABILITY OF CYCLOGENESIS (FORMATION OF DEPRESSION):NIL: 0%, LOW: 1-33%, , MODERATE: 34-66% AND HIGH: 67-100%
This is a guidance Bulletin for WMO/ESCAP Panel Member countries. Visit respective National websites for Country specific Bulletins

BAY OF BENGAL (BOB):

VARIOUS DETERMINISTIC MODELS INCLUDING ECMWF, IMD GFS, NCUM, NEPS AND GEFS ARE INDICATING LIKELY DEVELOPMENT OF CYCLONIC CIRCULATION AROUND 18TH JULY OVER NORTHWEST BAY OF BENGAL. UNDER THE INFLUENCE OF THE SAME, A LOW PRESSURE AREA (LPA) IS LIKELY TO FORM OVER NORTHWEST BOB & ADJOINING AREAS AROUND 20TH JULY. ONLY NCEP GFS SHOWING DELAYED FORMATION OF LPA OVER THE SAME REGION, BUT ALL MODELS FURTHER SUGGEST THAT THE LPA IS LIKELY TO INTENSIFY INTO A DEPRESSION AND MOVE WEST-NORTHWESTWARD TOWARDS INDIAN LANDMASS DURING SUBSEQUENT TWO DAYS. IMD GPP PRODUCT IS ALSO PREDICTING A ZONE OF MAXIMUM GPP ON 20TH JULY OVER NORTHWEST BOB.

Legends: IMD GFS: India Meteorological Department Global Forecast System, NCUM: National Centre for Medium Range Weather Forecasting Centre (NCMRWF) Unified Model, European Centre for Medium Range Weather Forecasting, GPP: Genesis Potential Parameter, National Centre for Environment Prediction GFS, ECMM: ECMWF multi model, GEFS: GFS ensemble, NEPS: NCUM ensemble prediction system, CNCUM: Coupled NCUM, CPC: Climate Prediction Center, NWS: National Weather Service)



338

923

IMD,DELHI

Cloud distribution: (a) Isolated: <25%, Scattered:25-50%, Broken: 51-75%, Solid:>75%, Convection Intensity: (a) Weak: Cloud Top Temperature (CTT) >-25°C, (b) Moderate: CTT: - 25°C to -40°C, (c) Intense: CTT: - 41°C to -70°C and (d) Very Intense: : Less than -70°C
PROBABILITY OF CYCLOGENESIS (FORMATION OF DEPRESSION):NIL: 0%, LOW: 1-33%, , MODERATE: 34-66% AND HIGH: 67-100%
This is a guidance Bulletin for WMO/ESCAP Panel Member countries. Visit respective National websites for Country specific Bulletins