



**REGIONAL SPECIALISED METEOROLOGICAL CENTRE-TROPICAL CYCLONES, NEW DELHI
TROPICAL WEATHER OUTLOOK**

DEMS-RSMC TROPICAL CYCLONES NEW DELHI DATED 20.08.2020

TROPICAL WEATHER OUTLOOK FOR NORTH INDIAN OCEAN (THE BAY OF BENGAL AND ARABIAN SEA) VALID FOR NEXT 120 HOURS ISSUED AT 0600 UTC OF 20.08.2020 BASED ON 0300 UTC OF 20.08.2020.

BAY OF BENGAL:

THE LOW PRESSURE AREA OVER NORTH BAY OF BENGAL & NEIGHBOURHOOD NOW LIES AS A WELL MARKED LOW PRESSURE AREA OVER NORTHWEST BAY OF BENGAL & NEIGHBOURHOOD WITH ASSOCIATED CYCLONIC CIRCULATION EXTENDING UPTO 7.6 KM ABOVE MEAN SEA LEVEL TILTING SOUTHWESTWARDS WITH HEIGHT. IT IS VERY LIKELY TO MOVE WESTWARDS GRADUALLY AND CONCENTRATE INTO A DEPRESSION DURING NEXT 24 HOURS.

A FRESH LOW PRESSURE AREA IS LIKELY TO DEVELOP OVER NORTHWEST BAY OF BENGAL & NEIGHBOURHOOD AROUND 23RD AUGUST,2020.

SCATTERED LOW AND MEDIUM CLOUDS WITH EMBEDDED INTENSE TO VERY INTENSE CONVECTION LAY OVER NORTH AND WESTCENTRAL AND ADJOINING SOUTHWEST BAY OF BENGAL. SCATTERED LOW AND MEDIUM CLOUDS WITH EMBEDDED ISOLATED MODERATE TO INTENSE CONVECTION LAY OVER EASTCENTRAL BAY OF BENGAL SEA AND GULF OF MARTABAN.. SCATTERED LOW AND MEDIUM CLOUDS WITH EMBEDDED WEAK TO MODERATE CONVECTION LAY OVER SOUTH ANDAMAN SEA.

PROBABILITY OF CYCLOGENESIS DURING NEXT 120 HRS:

24 HOURS	24-48 HOURS	48-72 HOURS	72-96 HOURS	96-120 HOURS
MODERATE	NIL	NIL	NIL	NIL

ARABIAN SEA:

SCATTERED LOW AND MEDIUM CLOUDS WITH EMBEDDED MODERATE TO INTENSE CONVECTION LAY OVER NORTHEAST ARABIAN SEA OFF GUJRAT COAST & GULF OF CAMBAY. SCATTERED LOW AND MEDIUM CLOUDS WITH EMBEDDED WEAK TO MODERATE CONVECTION LAY OVER CENTRAL AND ADJOINING SOUTHEAST ARABIAN SEA.

PROBABILITY OF CYCLOGENESIS DURING NEXT 120 HRS:

24 HOURS	24-48 HOURS	48-72 HOURS	72-96 HOURS	96-120 HOURS
NIL	NIL	NIL	NIL	NIL

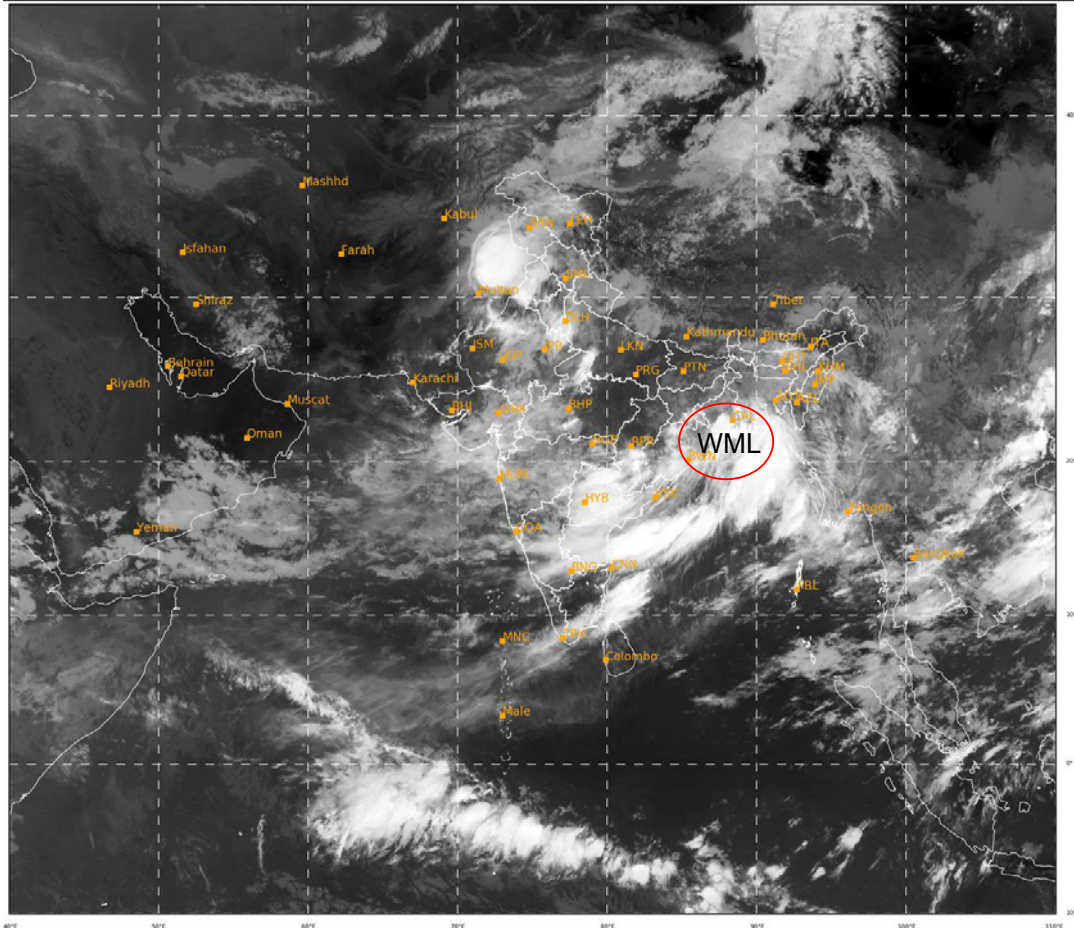
PROBABILITY OF CYCLOGENESIS (FORMATION OF DEPRESSION)

NIL: 0%, LOW: 1-25%, FAIR: 26-50%, MODERATE: 51-75% AND HIGH: 76-100%

REMARKS: NIL

SAT : INSAT-3D IMG
IMG_TIR1 10.8 um
LIC Mercator

20-08-2020/(0300 to 0327) GMT
20-08-2020/(0830 to 0857) IST



WML : Well
Marked Low
Pressure

416

934

IMD, DELHI

PROBABILITY OF CYCLOGENESIS (FORMATION OF DEPRESSION)
NIL: 0%, LOW: 1-25%, FAIR: 26-50%, MODERATE: 51-75% AND HIGH: 76-100%