



**REGIONAL SPECIALISED METEOROLOGICAL CENTRE-TROPICAL CYCLONES, NEW DELHI
TROPICAL WEATHER OUTLOOK**

DEMS-RSMC SPECIAL TROPICAL CYCLONES NEW DELHI DATED 18.08.2022

TROPICAL WEATHER OUTLOOK FOR NORTH INDIAN OCEAN (THE BAY OF BENGAL OF BENGAL AND ARABIAN SEA) VALID FOR NEXT 120 HOURS ISSUED AT 0600 UTC OF 18.08.2022 BASED ON 0300 UTC OF 18.08.2022.

(A) BAY OF BENGAL:

SUB: LOW PRESSURE AREA OVER NORTHEAST BAY OF BENGAL. TO INTENSIFY INTO A DEPRESSION BY TOMORROW MORNING

A LOW PRESSURE AREA FORMED OVER NORTHEAST AND ADJOINING AREAS OF EASTCENTRAL BAY OF BENGAL, BANGLADESH & MYANMAR COASTS IN THE MORNING (0000 UTC) OF TODAY, THE 18TH AUGUST, 2022 AND PERSISTED OVER THE SAME REGION AT 0300 UTC OF TODAY.

IT IS VERY LIKELY TO MOVE NORTHWESTWARDS AND BECOME WELL MARKED LOW PRESSURE AREA DURING NEXT 06 HOURS. CONTINUING TO MOVE NORTHWESTWARDS, IT IS LIKELY TO CONCENTRATE INTO A DEPRESSION BY TOMORROW MORNING OVER NORTH BAY OF BENGAL AND ADJOINING WEST BENGAL & BANGLADESH COASTS. THEREAFTER, IT IS LIKELY TO MOVE WEST-NORTHWESTWARDS ACROSS GANGETIC WEST BENGAL, NORTH ODISHA, JHARKHAND AND NORTH CHATTISGARH.

SEA CONDITION IS LIKELY TO BE ROUGH TO VERY ROUGH OVER NORTHEAST BAY OF BENGAL, ADJOINING EASTCENTRAL & NORTHWEST BAY OF BENGAL AND ALONG & OFF MYANMAR-BANGLADESH-WEST BENGAL & ODISHA COASTS ON 18TH & 19TH.

AS PER INSAT 3D IMAGERY AT 0300 UTC, LOW LEVEL CYCLONIC CIRCULATION LAY OVER ARAKAN COAST AND ADJOINING NORTHEAST BAY OF BENGAL & NEIGHBOUHOOD. SCATTERED TO BROKEN LOW AND MEDIUM CLOUDS WITH EMBEDDED INTENSE TO VERY INTENSE CONVECTION LAY OVER NORTH AND ADJOINING CENTRAL BAY OF BENGAL & ARAKAN COAST. MINIMUM CLOUD TOP TEMPERATURE IS MINUS 930C. AS PER MULTISAT WINDS AT 0300 UTC, STRONGER WINDS ARE PREVAILING IN THE NORTHEAST SECTOR OF THE SYSTEM OVER NORTHEAST BAY OF BENGAL & OFF ARAKAN COASTS.

PROBABILITY OF CYCLOGENESIS (FORMATION OF DEPRESSION) DURING NEXT 120 HRS:

24 HOURS	24-48 HOURS	48-72 HOURS	72-96 HOURS	96-120 HOURS
MOD	HIGH	HIGH	HIGH	NIL

(B) ARABIAN SEA:

SCATTERED TO BROKEN LOW AND MEDIUM CLOUDS WITH EMBEDDED INTENSE TO VERY INTENSE CONVECTION LAY OVER NORTHEAST ARABIAN SEA AND GULF OF KUTCH. SCATTERED LOW AND MEDIUM CLOUDS WITH EMBEDDED WEAK TO MODERATE TO MODERATE CONVECTION LAY OVER REST PARTS OF ARABIAN SEA.

PROBABILITY OF CYCLOGENESIS (FORMATION OF DEPRESSION) DURING NEXT 120 HRS:

24 HOURS	24-48 HOURS	48-72 HOURS	72-96 HOURS	96-120 HOURS
NIL	NIL	NIL	NIL	NIL

(C) WELL MARKED LOW PRESSURE AREA OVER SOUTHEAST PAKISTAN

YESTERDAY'S WELL MARKED LOW PRESSURE AREA OVER SOUTHWEST RAJASTHAN MOVED WEST-NORTHWESTWARDS AND LAY OVER SOUTHEAST PAKISTAN AT 0300 UTC OF TODAY, THE 18TH AUGUST, 2022. IT IS LIKELY TO FURTHER MOVE WEST-NORTHWESTWARDS AND WEAKEN GRADUALLY DURING NEXT 24 HOURS.

AS PER INSAT 3D IMAGERY AT 0300 UTC, ASSOCIATED SCATTERED TO BROKEN LOW AND MEDIUM CLOUDS WITH EMBEDDED INTENSE TO VERY INTENSE CONVECTION LAY OVER SOUTHWEST RAJASTHAN AND ADJOINING SOUTH PAKISTAN & NORTHWEST GUJARAT. MINIMUM CLOUD TOP TEMPERATURE IS MINUS 80°C.

REMARKS:

LOW PRESSURE AREA OVER NORTHEAST BAY OF BENGAL AND NEIGHBOURHOOD

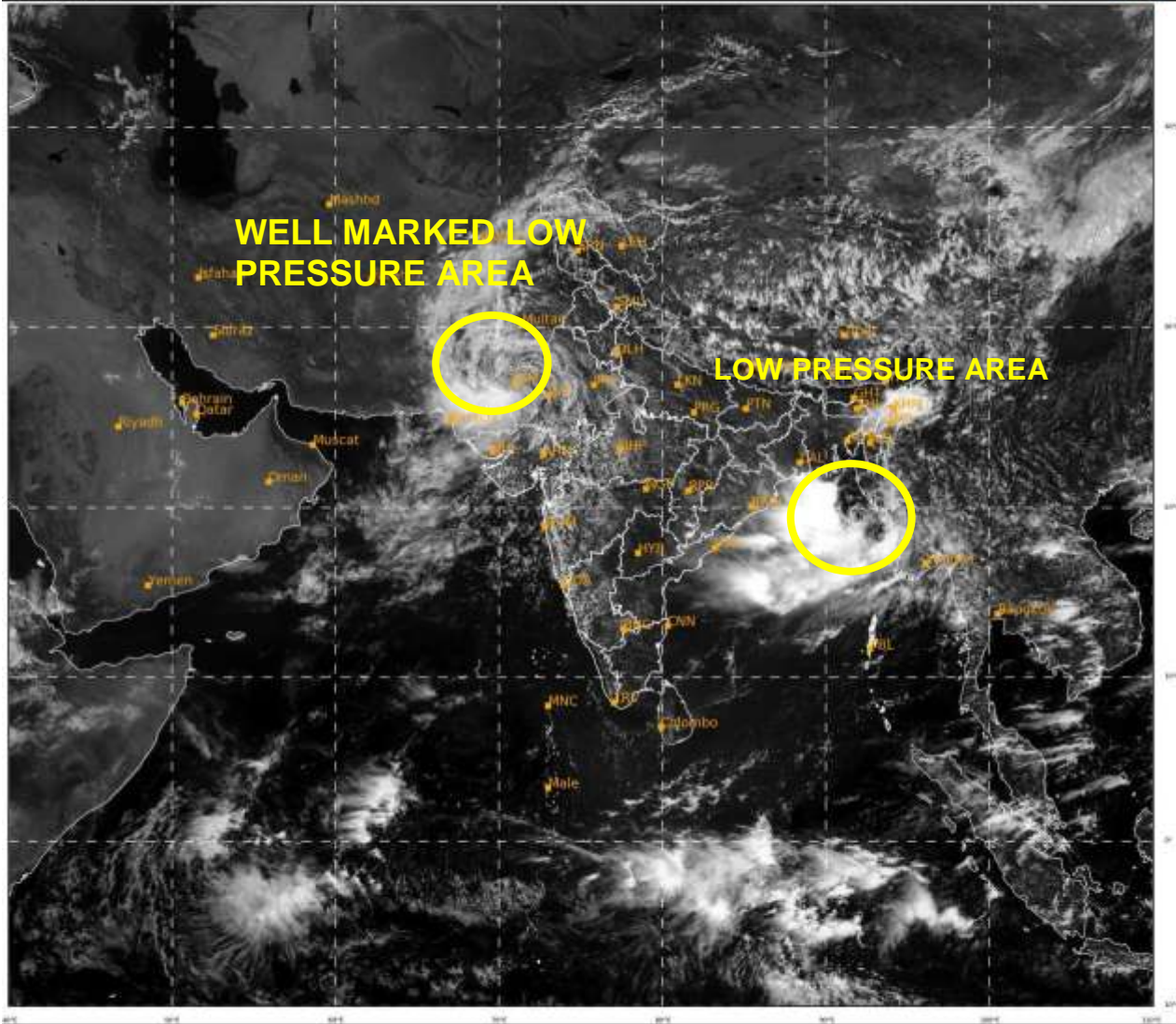
CURRENT CONDITIONS INDICATE THAT THE SYSTEM OVER NORTHEAST BAY OF BENGAL IS IN FAVOURABLE ENVIRONMENT WITH SEA SURFACE TEMPERATURE OF ABOUT 29-30°C OVER NORTH BAY OF BENGAL. LOW LEVEL POSITIVE VORTICITY IS THE SAME DURING PAST 24 HOURS AND IS ABOUT $100 \times 10^{-6} \text{ S}^{-1}$ TO THE SOUTH OF SYSTEM CENTRE. LOW LEVEL CONVERGENCE IS ABOUT $20 \times 10^{-5} \text{ S}^{-1}$ TO THE SOUTHWEST OF SYSTEM CENTRE. POSITIVE UPPER LEVEL DIVERGENCE HAS INCREASED AND IS ABOUT $40 \times 10^{-5} \text{ S}^{-1}$ TO THE SOUTHWEST OF SYSTEM CENTRE. ROBUST WESTWARD OUTFLOW IS SEEN IN UPPER LEVELS. MODERATE VERTICAL WIND SHEAR ABOUT 15-20 KNOTS IS PREVAILING OVER THE SYSTEM AREA AND WIND SHEAR IS HIGH OVER NORTHWEST BAY OF BENGAL.

MOST OF THE NUMERICAL MODELS ARE INDICATING QUICK INTENSIFICATION OF THE SYSTEM INTO A DEPRESSION OVER NORTH BAY OF BENGAL AROUND 19TH AUGUST. MODELS ARE ALSO UNANIMOUSLY INDICATING INITIAL NORTHWESTWARDS MOVEMENT TILL 19TH AUGUST FOLLOWED BY WEST-NORTHWESTWARDS MOVEMENT ACROSS GANGETIC WEST BENGAL, ODISHA, JHARKHAND & NORTH CHATTISGARH DURING NEXT 72-96 HOURS.

WELL MARKED LOW PRESSURE AREA OVER SOUTHEAST PAKISTAN

MOST OF THE MODELS INCLUDING IMD GFS, NCUM, ECMWF ARE INDICATING THE WELL MARKED LOW PRESSURE AREA OVER SOUTHEAST PAKISTAN TO MOVE WEST-NORTHWESTWARDS AND WEAKEN GRADUALLY DURING NEXT 24 HOURS. FAVOURABLE ENVIRONMENTAL CONDITIONS (HIGH POSITIVE VORTICITY ABOUT $120 \times 10^{-6} \text{ S}^{-1}$, POSITIVE LOW LEVEL CONVERGENCE $20 \times 10^{-5} \text{ S}^{-1}$, POSITIVE UPPER LEVEL DIVERGENCE $30 \times 10^{-5} \text{ S}^{-1}$, LOW VERTICAL WIND SHEAR ABOUT 05-10 KNOTS, MOISTURE FEED BACK FROM ARABIAN SEA) ARE PREVAILING OVER THE SYSTEM AREA. HENCE THE WELL MARKED LOW PRESSURE AREA OVER SOUTHEAST PAKISTAN IS LIKELY TO MAINTAIN ITS INTENSITY DURING NEXT 24 HOURS AND WEAKEN GRADUALLY THEREAFTER.

IN VIEW OF ALL THE ABOVE IT IS INFERRED THAT (A) LOW PRESSURE AREA OVER NORTHEAST BAY OF BENGAL & NEIGHBOURHOOD IS VERY LIKELY TO MOVE NORTHWESTWARDS AND BECOME WELL MARKED LOW PRESSURE AREA DURING NEXT 06 HOURS. CONTINUING TO MOVE NORTHWESTWARDS, IT IS LIKELY TO CONCENTRATE INTO A DEPRESSION AROUND 0000 UTC OF 19TH AUGUST OVER NORTH BAY OF BENGAL AND ADJOINING WEST BENGAL & BANGLADESH COASTS. THEREAFTER, IT IS LIKELY TO MOVE WEST-NORTHWESTWARDS ACROSS GANGETIC WEST BENGAL, NORTH ODISHA, JHARKHAND AND NORTH CHATTISGARH. (B) THE WELL MARKED LOW PRESSURE AREA OVER SOUTHEAST PAKISTAN IS LIKELY TO FURTHER MOVE WEST-NORTHWESTWARDS AND WEAKEN GRADUALLY DURING NEXT 24 HOURS.



33

1023

IMD, DELHI