



**REGIONAL SPECIALISED METEOROLOGICAL CENTRE-TROPICAL CYCLONES, NEW DELHI
TROPICAL WEATHER OUTLOOK**

DEMS-RSMC SPECIAL TROPICAL CYCLONES NEW DELHI DATED 10.08.2022

TROPICAL WEATHER OUTLOOK FOR NORTH INDIAN OCEAN (THE BAY OF BENGAL AND ARABIAN SEA) VALID FOR NEXT 120 HOURS ISSUED AT 0600 UTC OF 10.08.2022 BASED ON 0300 UTC OF 10.08.2022.

BAY OF BENGAL:

A FRESH LOW PRESSURE AREA IS LIKELY TO FORM OVER NORTH BAY OF BENGAL AROUND 13TH AUGUST, 2022. IT IS LIKELY TO BECOME MORE MARKED DURING NEXT 24 HOURS AND MOVE WEST-NORTHWESTWARDS THEREAFTER.

SCATTERED TO BROKEN LOW AND MEDIUM CLOUDS WITH EMBEDDED INTENSE TO VERY INTENSE CONVECTION OVER NORTH & CBAY OF BENGAL NORTH ANDAMAN SEA AND WEAK TO MODERATE CONVECTION OVER SOUTHBAY OF BENGAL SOUTH ANDAMAN SEA

PROBABILITY OF CYCLOGENESIS (FORMATION OF DEPRESSION) DURING NEXT 120 HRS:

24 HOURS	24-48 HOURS	48-72 HOURS	72-96 HOURS	96-120 HOURS
NIL	NIL	NIL	LOW	MOD

ARABIAN SEA:

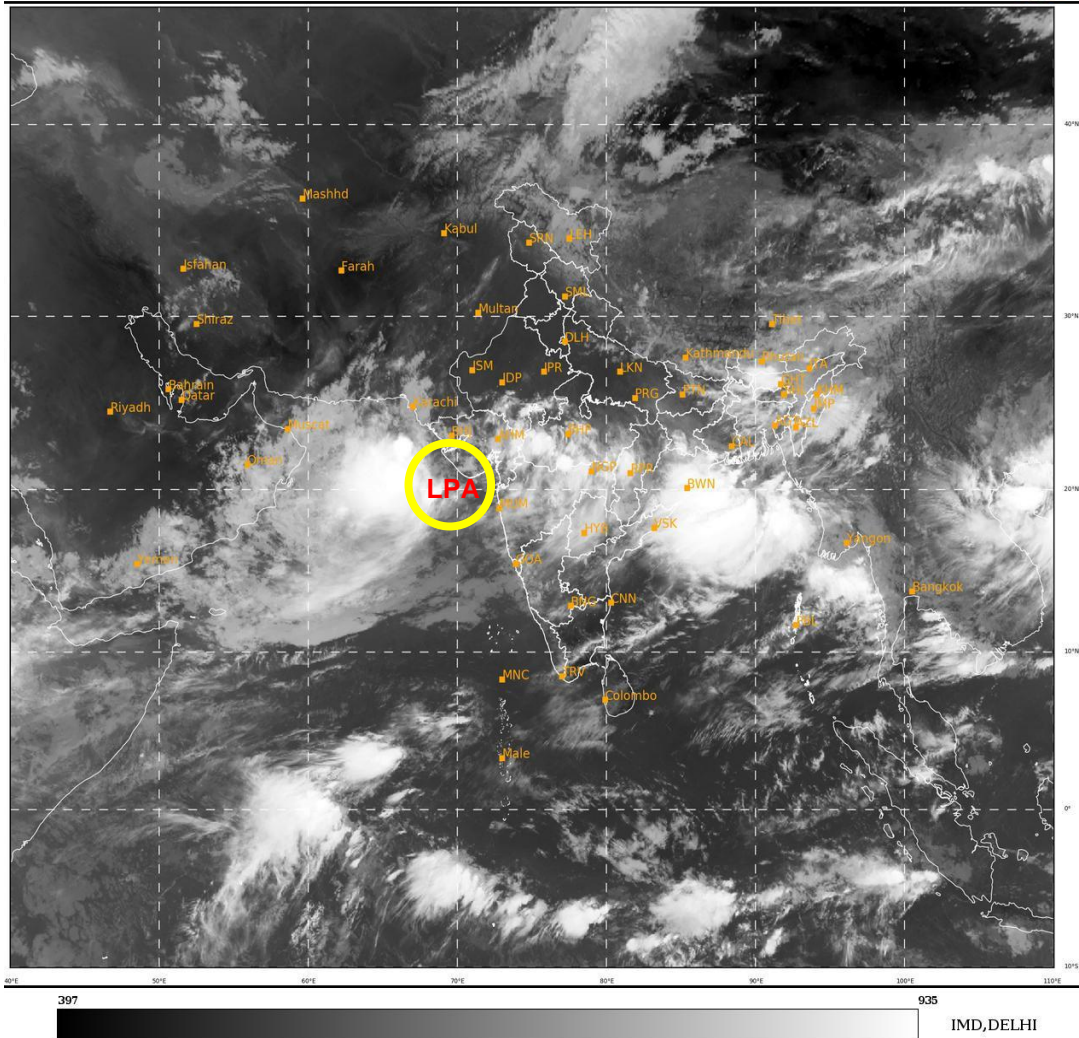
A LOW PRESSURE AREA HAS FORMED OVER SAURASHTRA AND ADJOINING NORTHEAST ARABIAN SEA. IT IS VERY LIKELY TO INTENSIFY FURTHER DURING NEXT 48 HOURS.

AS PER INSAT 3D IMAGERY AT 0300 UTC, SCATTERED TO BROKEN LOW AND MEDIUM CLOUDS WITH EMBEDDED INTENSE TO VERY INTENSE CONVECTION LAY OVER NORTHEAST AND ADJOINING EASTCENTRAL ARABIAN SEA. MINIMUM CTT MINUS 93°C.

SCATTERED TO BROKEN LOW AND MEDIUM CLOUDS WITH EMBEDDED INTENSE TO VERY INTENSE CONVECTION LAY OVER NORTH ADJOINING CENTRAL ARABIAN SEA. SCATTERED LOW AND MEDIUM CLOUDS WITH EMBEDDED MODERATE TO INTENSE CONVECTION LAY OVER WESTCENTRAL ARABIAN SEA AND WEAK TO MODERATE CONVECTION LAY OVER GULF OF KUTCH ,GULF OF CAMBAY & REST OF ARABIAN SEA.

PROBABILITY OF CYCLOGENESIS (FORMATION OF DEPRESSION) DURING NEXT 120 HRS:

24 HOURS	24-48 HOURS	48-72 HOURS	72-96 HOURS	96-120 HOURS
NIL	NIL	LOW	LOW	NIL



LPA:LOW PRESSURE AREA