



REGIONAL SPECIALISED METEOROLOGICAL CENTRE -TROPICAL CYCLONES, NEW DELHI
TROPICAL WEATHER OUTLOOK

DEMS-RSMC TROPICAL CYCLONES NEW DELHI DATED 14.09.2025

TROPICAL WEATHER OUTLOOK FOR THE NORTH INDIAN OCEAN (THE BAY OF BENGAL AND THE ARABIAN SEA) VALID FOR THE NEXT 168 HOURS ISSUED AT 0600 UTC OF 14.09.2025 BASED ON 0300 UTC OF 14.09.2025.

BAY OF BENGAL:

Yesterday's low pressure area over westcentral & adjoining northwest Bay of Bengal off north coastal Andhra Pradesh-south Odisha coasts lay over north Telangana & adjoining Vidarbha at 0300 UTC of today, 14th September, 2025 and extended upto 4.5 km above mean sea level tilting southwestwards with height. It is likely to move west-northwestwards towards central parts of Vidarbha & neighborhood. Thereafter, it is likely to move nearly northwards as a remnant upper air cyclonic circulation.

A fresh upper air cyclonic circulation formed over southeast Bay of Bengal at 0300 UTC of today, 14th September, 2025 between 3.1 & 5.8 km above mean sea level.

Scattered low and medium clouds with embedded intense convection lay over south Bay of Bengal & Andaman Sea and moderate to intense convection lay over rest of Bay of Bengal.

***PROBABILITY OF CYCLOGENESIS (FORMATION OF DEPRESSION) DURING NEXT 168 HRS**

24 HOURS	24-48 HOURS	48-72 HOURS	72-96 HOURS	96-120 HOURS	120-144 HOURS	144-168 HOURS
NIL	NIL	NIL	NIL	NIL	NIL	NIL

***NOTE: EVERY 24HR FORECAST IS VALID UPTO 0300 UTC (0830 IST) OF NEXT DAY**

ARABIAN SEA:

Scattered low and medium clouds with embedded moderate to intense convection lay over southeast southeast and eastcentral Arabian Sea and Gulf of Cambay. Scattered low and medium clouds with embedded isolated weak to moderate convection lay over rest of Arabian Sea & Lakshadweep Island area.

***PROBABILITY OF CYCLOGENESIS (FORMATION OF DEPRESSION) DURING NEXT 168 HRS**

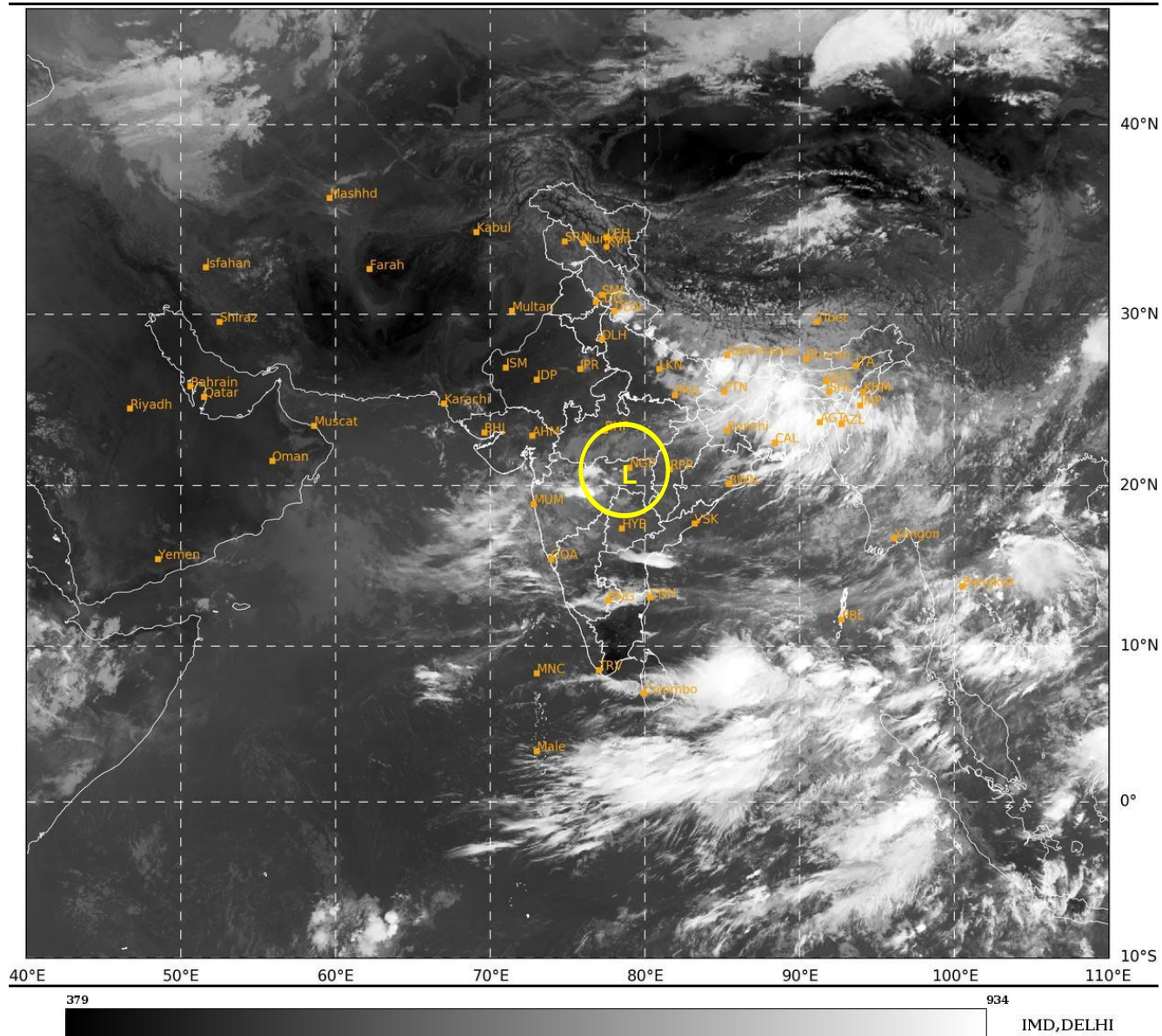
24 HOURS	24-48 HOURS	48-72 HOURS	72-96 HOURS	96-120 HOURS	120-144 HOURS	144-168 HOURS
NIL	NIL	NIL	NIL	NIL	NIL	NIL

***NOTE: EVERY 24HR FORECAST IS VALID UPTO 0300 UTC (0830 IST) OF NEXT DAY**

REMARKS: NIL

SAT : INSAT-3DR IMG
IMG_TIR1 10.8 um
L1C Mercator

14-09-2025/(0415 to 0442) GMT
14-09-2025/(0945 to 1012) IST



L: Low Pressure Area