



**REGIONAL SPECIALISED METEOROLOGICAL CENTRE-TROPICAL CYCLONES, NEW DELHI  
TROPICAL WEATHER OUTLOOK**

**DEMS-RSMC TROPICAL CYCLONES NEW DELHI DATED 20.10.2020**

**TROPICAL WEATHER OUTLOOK FOR NORTH INDIAN OCEAN (THE BAY OF BENGAL AND ARABIAN SEA) VALID FOR NEXT 120 HOURS ISSUED AT 0600 UTC OF 20.10.2020 BASED ON 0300 UTC OF 20.10.2020 .**

**BAY OF BENGAL:**

A LOW PRESSURE AREA HAS FORMED OVER CENTRAL PARTS OF BAY OF BENGAL (BOB). IT IS LIKELY BECOME MORE MARKED. IT IS LIKELY TO MOVE INITIALLY NORTHWESTWARDS DURING NEXT 48 HOURS AND THEN NORTH-NORTHEASTWARDS DURING SUBSEQUENT 3 DAYS.

SCATTERED LOW AND MEDIUM CLOUDS WITH EMBEDDED INTENSE TO VERY INTENSE CONVECTION LAY OVER WESTCENTAL ADJOINING SOUTHEAST BAY OF BENGAL EASTCENTRAL BAY OF BENGAL. SCATTERED LOW AND MEDIUM CLOUDS WITH EMBEDDED MODERATE TO INTENSE CONVECTION LAY OVER REST OF BAY OF BENGAL AND ANDAMAN SEA.

**PROBABILITY OF CYCLOGENESIS DURING NEXT 120 HRS:**

24 HOURS	24-48 HOURS	48-72 HOURS	72-96 HOURS	96-120 HOURS
NIL	NIL	NIL	NIL	NIL

**ARABIAN SEA:**

SCATTERED LOW AND MEDIUM CLOUDS WITH EMBEDDED INTENSE TO VERY INTENSE CONVECTION LAY OVER WESTCENTAL ARABIAN SEA BETWEEN LAT 13.5N TO 18.5N LONG 56.0E TO 60.5E. SCATTERED LOW AND MEDIUM CLOUDS WITH EMBEDDED ISOLATED MODERATE TO INTENSE CONVECTION LAY OVER SOUTHEAST ARABIAN SEA OFF KERELA ADJOINING KARNATAKA COASTS.


**PROBABILITY OF CYCLOGENESIS DURING NEXT 120 HRS :**

24 HOURS	24-48 HOURS	48-72 HOURS	72-96 HOURS	96-120 HOURS
NIL	NIL	NIL	NIL	NIL

**REMARKS:**

SEA SURFACE TEMPERATURE IS AROUND 29-31°C OVER MOST PARTS OF BOB. TROPICAL CYCLONE HEAT POTENTIAL IS AROUND 70-90 KJ/CM<sup>2</sup> OVER ENTIRE BOB, EXCEPT SOME PARTS ALONG THE EAST COAST OF INDIA OFF ANDHRA PRADESH-TAMILNADU-PUDUCHERRY COASTS. MOST OF THE MODELS ARE INDICATING THAT THE LOW PRESSURE AREA OVER CENTRAL BOB WOULD MOVE TOWARDS ANDHRA PRADESH COAST AS A WELL MARKED LOW DURING NEXT 2 DAYS FOLLOWED BY NORTH-NORTHEASTWARD MOVEMENT. A FEW MODELS (WRF,NCUM & NEPS) ARE

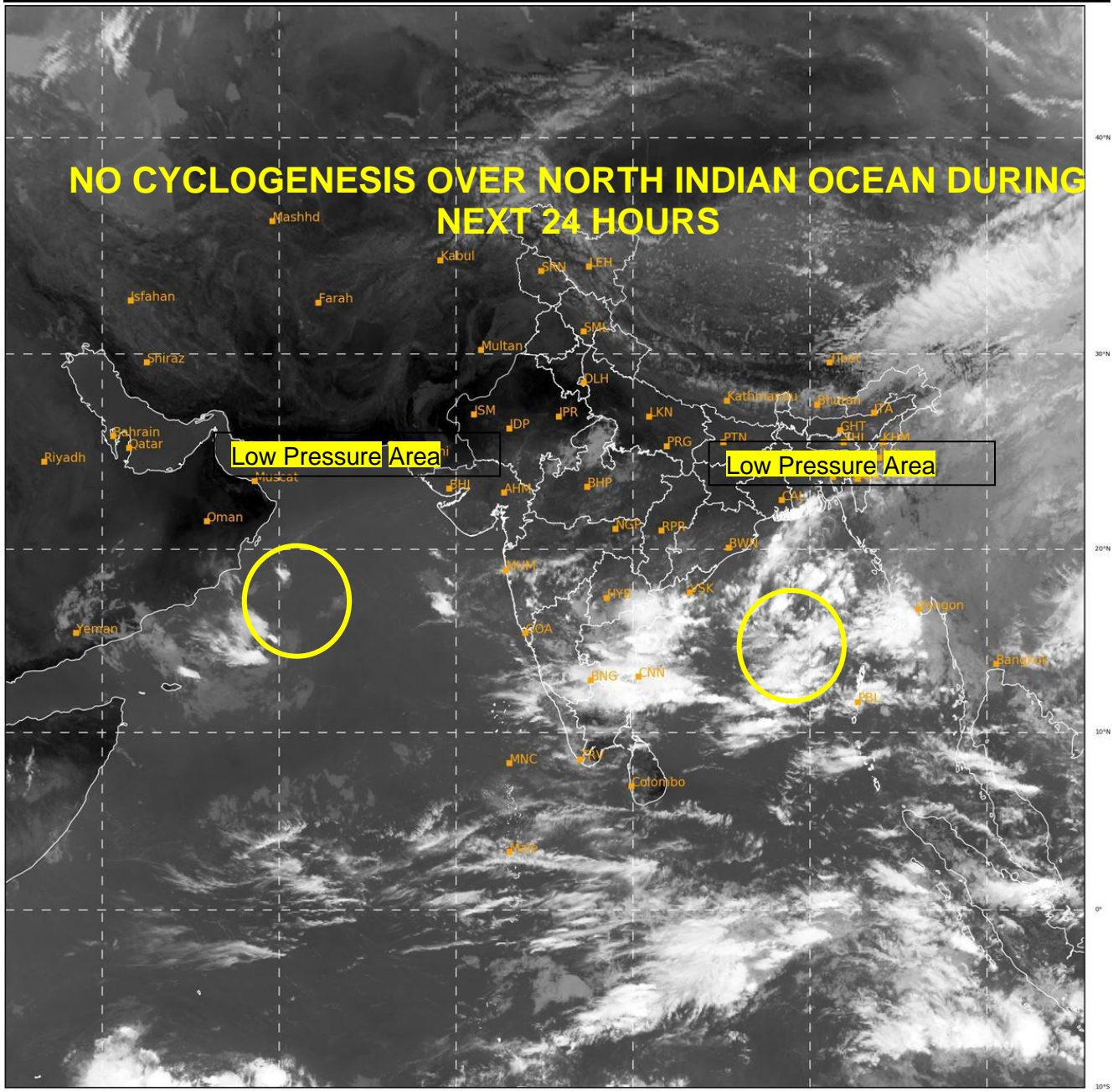
PROBABILITY OF CYCLOGENESIS (FORMATION OF DEPRESSION):NIL: 0%, LOW: 1-25%, FAIR: 26-50%, MODERATE: 51-75% AND HIGH: 76-100%

 This is a guidance Bulletin for the WMO/ESCAP Panel Member countries,. Please visit respective National websites for Country specific Bulletins

INDICATING ITS INTENSIFICATION INTO A DEPRESSION AND MOVEMENT TOWARDS NORTH BOB DURING 23<sup>RD</sup> -24<sup>TH</sup> OCTOBER.

SAT : INSAT-3D IMG  
IMG\_TIR1 10.8 um  
LIC Mercator

20-10-2020/(0600 to 0627) GMT  
20-10-2020/(1130 to 1157) IST



372

928

IMD,DELHI

PROBABILITY OF CYCLOGENESIS (FORMATION OF DEPRESSION):NIL: 0%, LOW: 1-25%, FAIR: 26-50%, MODERATE: 51-75% AND HIGH: 76-100%

✚ This is a guidance Bulletin for the WMO/ESCAP Panel Member countries,. Please visit respective National websites for Country specific Bulletins