



**REGIONAL SPECIALISED METEOROLOGICAL CENTRE -TROPICAL CYCLONES, NEW DELHI
TROPICAL WEATHER OUTLOOK**

DEMS-RSMC TROPICAL CYCLONES NEW DELHI DATED 01.06.2026

TROPICAL WEATHER OUTLOOK FOR THE NORTH INDIAN OCEAN (THE BAY OF BENGAL AND THE ARABIAN SEA) VALID FOR THE NEXT 168 HOURS ISSUED AT 0600 UTC OF 01.06.2026 BASED ON 0300 UTC OF 01.06.2026.

BAY OF BENGAL:

Yesterday's upper air cyclonic circulation over Eastcentral & adjoining northeast Bay of Bengal lay over northeast & adjoining eastcentral Bay of Bengal and extended upto 4.5 km above mean sea level at 0300 UTC of today, the 01st June 2026.

Scattered to broken, low and medium clouds with embedded intense to very intense convection lay over the westcentral Bay of Bengal off Andhra Pradesh coast and Andaman Sea. Scattered low and medium clouds with embedded moderate to intense convection lay over rest of the Bay of Bengal.

***PROBABILITY OF CYCLOGENESIS (FORMATION OF DEPRESSION) DURING NEXT 168 HRS)**

24 HOURS	24-48 HOURS	48-72 HOURS	72-96 HOURS	96-120 HOURS	120-144 HOURS	144-168 HOURS
NIL	NIL	NIL	NIL	NIL	NIL	NIL

***NOTE: EVERY 24HR FORECAST IS VALID UPTO 0300 UTC (0830 IST) OF NEXT DAY**

ARABIAN SEA:

Yesterday's upper air cyclonic circulation over the Southeast Arabian Sea and adjoining south Kerala lay over the Southeast Arabian Sea and adjoining Lakshadweep Islands area and extended between 3.1 & 7.6 km above mean sea level tilting southwestwards with height at 0300 UTC of today, the 01st June 2026.

Yesterday's upper air cyclonic circulation over Southwest Arabian Sea & neighbourhood persisted over the same region and extended between 3.1 & 5.8 km above mean sea level at 0300 UTC of today, the 01st June 2026.

Scattered to broken low and medium clouds with embedded intense to very intense convection lay over the south Arabian Sea, Lakshadweep Islands and Maldives area.

***PROBABILITY OF CYCLOGENESIS (FORMATION OF DEPRESSION) DURING NEXT 168 HRS:**

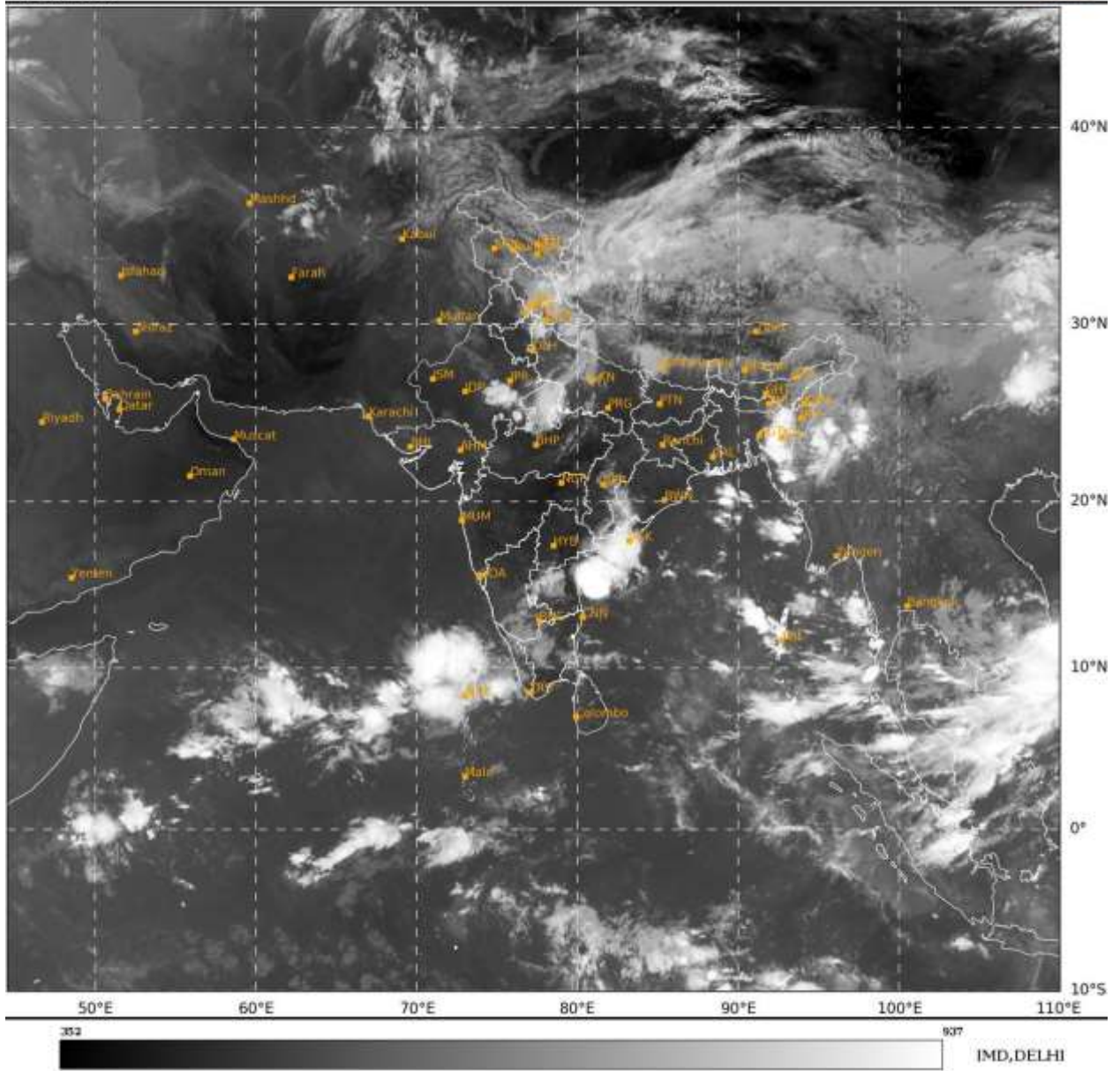
24 HOURS	24-48 HOURS	48-72 HOURS	72-96 HOURS	96-120 HOURS	120-144 HOURS	144-168 HOURS
NIL	NIL	NIL	NIL	NIL	NIL	NIL

***NOTE: EVERY 24HR FORECAST IS VALID UPTO 0300 UTC (0830 IST) OF NEXT DAY**

REMARKS: NIL

Cloud distribution: (a) Isolated: <25%, Scattered:25-50%, Broken: 51-75%, Solid:>75%, Convection Intensity: (a) Weak: Cloud Top Temperature(CTT)>-25°C, (b) Moderate: CTT:-25°Cto-40°C, (c) Intense: CTT: -41°Cto -70°C and (d) Very Intense::Less than -70°C Probability of cyclogenesis (formation of depression) :NIL:0%, LOW:1-33%, MODERATE:34-66% and HIGH:67-100%

This is a guidance Bulletin for WMO/ESCAP Panel Member countries. Visit respective National websites for Country specific Bulletins.



Cloud distribution: (a) Isolated: <25%, Scattered:25-50%, Broken: 51-75%, Solid:>75%, Convection Intensity: (a) Weak: Cloud Top Temperature(CTT)>-25°C, (b) Moderate: CTT:-25°Cto-40°C, (c) Intense: CTT: -41°Cto -70°C and (d) Very Intense::Less than -70°C Probability of cyclogenesis (formation of depression) :NIL:0%, LOW:1-33%, MODERATE:34-66% and HIGH:67-100%
This is a guidance Bulletin for WMO/ESCAP Panel Member countries. Visit respective National websites for Country specific Bulletins.