



**REGIONAL SPECIALISED METEOROLOGICAL CENTRE-TROPICAL CYCLONES, NEW DELHI
TROPICAL WEATHER OUTLOOK**

DEMS-RSMC TROPICAL CYCLONES NEW DELHI DATED 21.07.2023

TROPICAL WEATHER OUTLOOK FOR NORTH INDIAN OCEAN (THE BAY OF BENGAL AND THE ARABIAN SEA) VALID FOR NEXT 168 HOURS ISSUED AT 0600 UTC OF 21.07.2023 BASED ON 0300 UTC OF 21.07.2023.

BAY OF BENGAL:

YESTERDAY'S LOW PRESSURE AREA OVER NORTHWEST BAY OF BENGAL OFF ODISHA COAST PERSISTS AND NOW LIES OVER CAOSTAL AREAS OF SOUTH ODISHA-NORTH ANDHRA PRADESH AND ADJOINING NORTHWEST & WESTCENTRAL BAY OF BENGAL WITH ASSOCIATED CYCLONIC CIRCULATION EXTENDING UPTO 7.6 KM ABOVE MEAN SEA LEVEL. IT IS LIKELY TO MOVE SLOWLY WEST-NORTHWESTWARDS ACROSS SOUTH ODISHA-NORTH ANDHRA PRADESH COASTS DURING NEXT 2 DAYS.

A FRESH LOW PRESSURE AREA IS LIKELY TO FORM OVER NORTHWEST & ADJOINING WESTCENTRAL BAY OF BENGAL OFF SOUTH ODISHA-NORTH ANDHRA PRADESH COASTS AROUND 24TH JULY.

SCATTERED TO BROKEN LOW AND MEDIUM CLOUDS WITH EMBEDDED INTENSE TO VERY INTENSE CONVECTION LAY OVER NORTHEAST BAY OF BENGAL, CENTRAL BAY OF BENGAL ADJOINING SOUTHWEST BAY OF BENGAL, ANDAMAN SEA AND TENASSERIM COAST. SCATTERED LOW AND MEDIUM CLOUDS WITH EMBEDDED MODERATE TO INTENSE CONVECTION LAY OVER NORTHWEST BAY OF BENGAL, REST SOUTH BAY OF BENGAL AND GULF OF MARTABAN.

PROBABILITY OF CYCLOGENESIS (FORMATION OF DEPRESSION) DURING NEXT 168 HRS:

24 HOURS	24-48 HOURS	48-72 HOURS	72-96 HOURS	96-120 HOURS	120-144 HOURS	144-168 HOURS
NIL	NIL	NIL	LOW	MODERATE	MODERATE	LOW

ARABIAN SEA:

SCATTERED TO BROKEN LOW AND MEDIUM CLOUDS WITH EMBEDDED INTENSE TO VERY INTENSE CONVECTION LAY OVER NORTHEAST ARABIAN SEA. SCATTERED LOW AND MEDIUM CLOUDS WITH EMBEDDED WEAK TO MODERATE CONVECTION LAY OVER REST ARABIAN SEA, GULF OF KUTCH AND LAKSHADWEEP ISLAND AREA AND WEAK TO MODERATE CONVECTION LAY OVER GULF OF CAMBAY AND COMORIN AREA.

PROBABILITY OF CYCLOGENESIS (FORMATION OF DEPRESSION) DURING NEXT 168 HRS:

24 HOURS	24-48 HOURS	48-72 HOURS	72-96 HOURS	96-120 HOURS	120-144 HOURS	144-168 HOURS
NIL	NIL	NIL	NIL	NIL	NIL	NIL

REMARKS:**MODEL GUIDANCE FOR BAY OF BENGAL (BOB):**

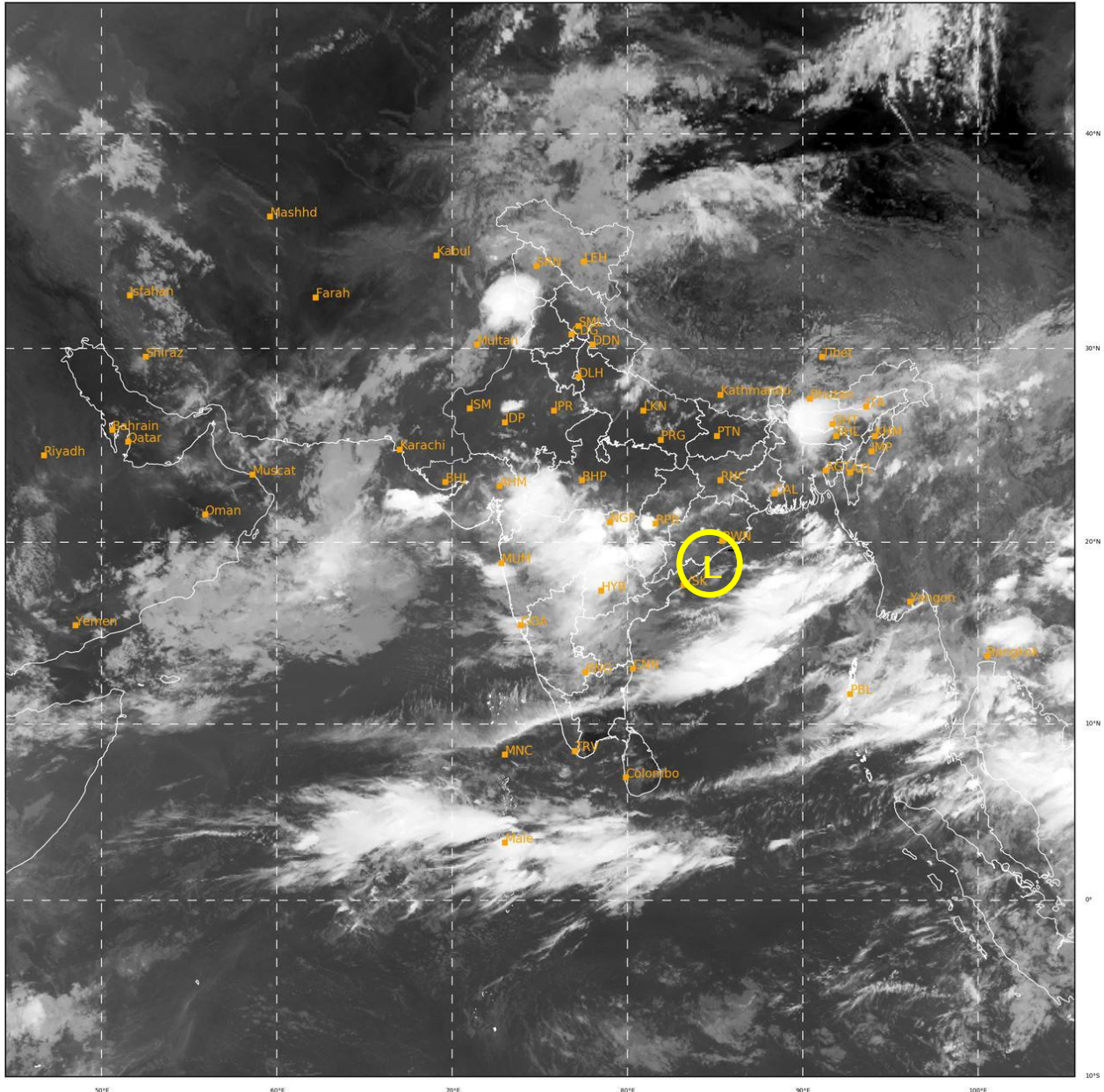
VARIOUS DETERMINISTIC MODELS INCLUDING ECMWF, IMD GFS, NCUM, NEPS AND GEFS ARE INDICATING THE LOW PRESSURE AREA (LPA) OVER COASTAL AREAS OF SOUTH ODISHA & NORTH ANDHRA PRADESH AND ADJOINING NORTHWEST & WESTCENTRAL BOB. NCUM, NEPS AND ECMWF MODEL ARE PREDICTING APARENT WEST-NORTHWESTWARD MOVEMENT OF THE LPA EMBEDDED WITHIN MONSOON TROUGH ACROSS SOUTH ODISHA & NORTH ANDHRA PRADESH COASTS DURING NEXT 2 DAYS. BUT IMDGFS AND NCEP GFS IS NOT SHOWING ANY SIGNIFICANT MOVEMENT OF THE SYSTEM. THEREFORE, THE PRESENT LPA IS LIKELY TO MOVE WEST-NORTHWESTWARD ACROSS SOUTH ODISHA & NORTH ANDHRA PRADESH COASTS DURING NEXT TWO DAYS.

IMD GFS, NCEP GFS, NCUM, GEFS AND NEPS MODELS ARE INDICATING THE FORMATION OF A FRESH LOW PRESSURE SYSTEM OVER NORTHWEST AND ADJOINING WESTCENTRAL BOB OFF SOUTH ODISHA & NORTH ANDHRA PRADESH COASTS AROUND 24TH JULY. THE FORMATION OF LPA PREDICTED BY ECMWF MODEL IS DELAYED BY ONE DAY. THERE IS A VARIATION AMONG MODELS WITH RESPECT TO FURTHER MOVEMENT OF THE SYSTEM. BUT ALL MODELS ARE SHOWING THAT THE LPA IS LIKELY TO INTENSIFY FURTHER INTO A DEPRESSION DURING SUBSEQUENT 2 DAYS AFTER ITS FORMATION.

IN VIEW OF THE AVAILABLE MODEL GUIDANCE AND ENVIRONMENTAL FEATURES, IT IS INFERRED THE EXISTING LPA OVER COASTAL AREAS OF SOUTH ODISHA - NORTH ANDHRA PRDESH AND ADJOINING NORTHWEST & WESTECNETRAL BOB IS LIKELY TO MOVE ALONG MONSOON TROUGH WEST-NORTHWESTWARDS ACROSS SOUTH ODISHA-NORTH ANDHRA PRADESH COASTS DURING NEXT TWO DAYS.

ANOTHER FRESH LPA IS LIKELY TO FORM OVER NORTHWEST AND ADJOINING WESTCENTRAL BOB OFF SOUTH ODISHA - NORTH ANDRA PRADESH COASTS AROUND 24TH JULY. THE SYSTEM IS LIKELY TO INTENSIFY FURTHER INTO A DEPRESSION DURING SUBSEQUENT 2 DAYS.

Legends: IMD GFS: India Meteorological Department Global Forecast System, NCUM: National Centre for Medium Range Weather Forecasting Centre (NCMRWF) Unified Model, European Centre for Medium Range Weather Forecasting, GPP: Genesis Potential Parameter, National Centre for Environment Prediction GFS, ECMM: ECMWF multi model, GEFS: GFS ensemble, NEPS: NCUM ensemble prediction system, CNCUM: Coupled NCUM, CPC: Climate Prediction Center, NWS: National Weather Service)



367

926

IMD, DELHI

Cloud distribution: (a) Isolated: <25%, Scattered:25-50%, Broken: 51-75%, Solid:>75%, Convection Intensity: (a) Weak: Cloud Top Temperature (CTT) >-25°C, (b) Moderate: CTT: - 25°C to -40°C, (c) Intense: CTT: - 41°C to -70°C and (d) Very Intense: : Less than -70°C
PROBABILITY OF CYCLOGENESIS (FORMATION OF DEPRESSION):NIL: 0%, LOW: 1-33%, , MODERATE: 34-66% AND HIGH: 67-100%
This is a guidance Bulletin for WMO/ESCAP Panel Member countries. Visit respective National websites for Country specific Bulletins