



**REGIONAL SPECIALISED METEOROLOGICAL CENTRE-TROPICAL CYCLONES, NEW DELHI
TROPICAL WEATHER OUTLOOK**

DEMS-RSMC TROPICALCYCLONES NEW DELHI DATED 20.09.2022

TROPICAL WEATHER OUTLOOK FOR NORTH INDIAN OCEAN (THEBAY OF BENGAL OF BENGAL AND ARABIAN SEA) VALID FOR NEXT 120 HOURS ISSUED AT 0600 UTC OF 20.09.2022 BASED ON 0300 UTC OF 20.09.2022.

BAY OF BENGAL:

THE LOW PRESSURE AREA OVER NORTHWEST BAY OF BENGAL (BOB) OFF NORTH ODISHA-WEST BENGAL COASTS NOW LIES OVER NORTHWEST BOB AND ADJOINING NORTH ODISHA-WEST BENGAL COASTS. THE ASSOCIATED CYCLONIC CIRCULATION EXTENDS UPTO 5.8 KM ABOVE MEAN SEA LEVEL TILTING SOUTHWESTWARDS WITH HEIGHT. IT IS LIKELY TO MOVE WEST-NORTHWESTWARDS ACROSS NORTH ODISHA & NORTH CHHATTISGARH DURING NEXT 2 DAYS.

AS PER INSAT 3D IMAGERY AT 0300 UTC, LOW LEVEL CIRCULATION LAY OVER NORTHWEST & ADJOINING WESTCENTRAL BOB. SCATTERED TO BROKEN LOW AND MEDIUM CLOUDS WITH EMBEDDED MODERATE TO INTENSE CONVECTION LAY OVER NORTHWEST AND ADJOINING WESTCENTRAL BOB, ODISHA, COASTAL GANGETIC WEST BENGAL AND NORTH COASTAL ANDHRA PRADESH. MINIMUM CLOUD TOP TEMPERATURE IS -60 DEGREE CELSIUS.

SCATTERED TO BROKEN LOW AND MEDIUM CLOUDS WITH EMBEDDED INTENSE TO VERY INTENSE CONVECTION LAY OVER WESTCENTRAL & SOUTHWEST BAY OF BENGAL ADJOINING NORTH TAMILNADU COAST. SCATTERED TO BROKEN LOW AND MEDIUM CLOUDS WITH EMBEDDED MODERATE TO INTENSE CONVECTION LAY OVER NORTH BAY OF BENGAL AND ANDAMAN SEA.

PROBABILITY OF CYCLOGENESIS (FORMATION OF DEPRESSION) DURING NEXT 120 HRS:

24 HOURS	24-48 HOURS	48-72 HOURS	72-96 HOURS	96-120 HOURS
NIL	NIL	NIL	NIL	NIL

ARABIAN SEA:

SCATTERED LOW AND MEDIUM CLOUDS WITH WEAK TO MODERATE CONVECTION LAY OVER EASTCENTRAL OFF MAHARASHTRA COAST, SOUTHEAST ARABIAN SEA AND LAKSHADWEEP ISLANDS AREA.

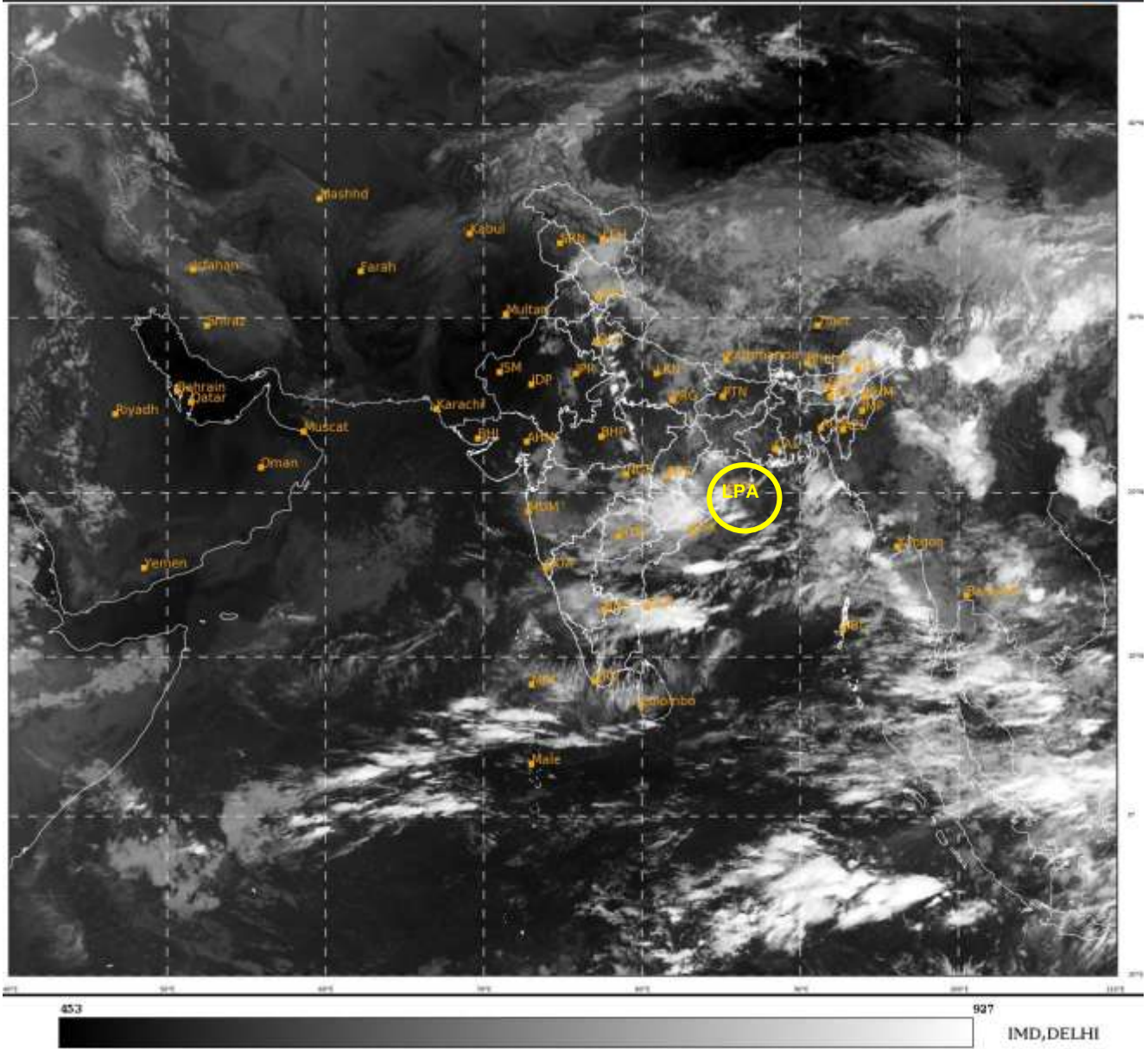
PROBABILITY OF CYCLOGENESIS (FORMATION OF DEPRESSION) DURING NEXT 120 HRS:

24 HOURS	24-48 HOURS	48-72 HOURS	72-96 HOURS	96-120 HOURS
NIL	NIL	NIL	NIL	NIL

Remarks: NIL

SAT : INSAT-3D IMG
IMG_TIR1 10.8 um
LIC Mercator

20-09-2022/(0300 to 0326) GMT
20-09-2022/(0830 to 0856) IST



LPA: LOW PRESSURE AREA

Cloud distribution: (a) Isolated: <25%, Scattered:25-50%, Broken: 51-75%, Solid:>75%, Convection Intensity: (a) Weak: Cloud Top Temperature (CTT) >-25°C, (b) Moderate: CTT: - 25°C to -40°C, (c) Intense: CTT: - 41°C to -70°C and (d) Very Intense: : Less than -70°C
PROBABILITY OF CYCLOGENESIS (FORMATION OF DEPRESSION):NIL: 0%, LOW: 1-33%, , MODERATE: 34-66% AND HIGH: 67-100%
This is a guidance Bulletin for WMO/ESCAP Panel Member countries. Visit respective National websites for Country specific Bulletins