



**REGIONAL SPECIALISED METEOROLOGICAL CENTRE -TROPICAL CYCLONES, NEW DELHI  
TROPICAL WEATHER OUTLOOK**

**DEMS-RSMC TROPICAL CYCLONES NEW DELHI DATED 25.06.2026**

**TROPICAL WEATHER OUTLOOK FOR THE NORTH INDIAN OCEAN (THE BAY OF BENGAL AND THE ARABIAN SEA) VALID FOR THE NEXT 168 HOURS ISSUED AT 0600 UTC OF 25.06.2026 BASED ON 0300 UTC OF 25.06.2026.**

**BAY OF BENGAL:**

Yesterday's upper air cyclonic circulation lay over north Bay of Bengal & adjoining coastal Bangladesh lay over northeast & adjoining eastcentral Bay of Bengal between 4.5 & 7.6 km above mean sea level at 0300 UTC of today the 25<sup>th</sup> June, 2026.

Scattered to broken low and medium clouds with embedded intense to very intense convection lay over north & central Bay of Bengal, Andaman Sea, Arakan Coast and Gulf of Martaban. Scattered low and medium clouds with embedded moderate to intense convection lay over south Bay of Bengal.

**\*PROBABILITY OF CYCLOGENESIS (FORMATION OF DEPRESSION) DURING NEXT 168 HRS)**

24 HOURS	24-48 HOURS	48-72 HOURS	72-96 HOURS	96-120 HOURS	120-144 HOURS	144-168 HOURS
NIL	NIL	NIL	NIL	NIL	NIL	NIL

**\*NOTE: EVERY 24HR FORECAST IS VALID UPTO 0300 UTC (0830 IST) OF NEXT DAY**

**ARABIAN SEA:**

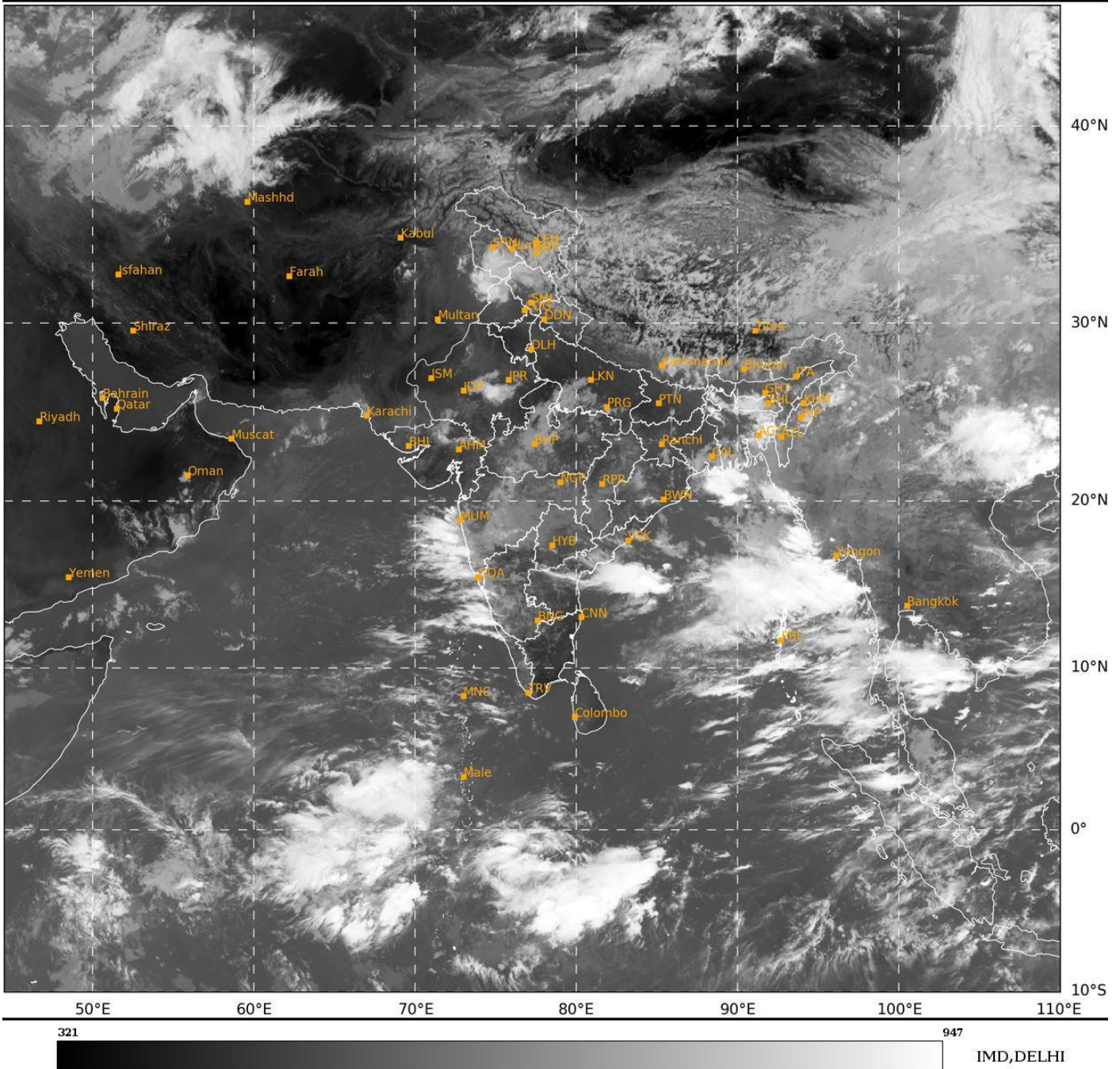
Scattered to broken low and medium clouds with embedded intense to very intense convection lay over eastcentral Arabian sea off Maharashtra-Goa-Karnataka coasts. Scattered low and medium clouds with embedded moderate to intense convection lay over south Arabian Sea, Lakshadweep Islands area, Maldives area, and Comorin area. Scattered low and medium clouds with embedded isolated weak to moderate convection lay over the rest of the Arabian Sea.

**\*PROBABILITY OF CYCLOGENESIS (FORMATION OF DEPRESSION) DURING NEXT 168 HRS:**

24 HOURS	24-48 HOURS	48-72 HOURS	72-96 HOURS	96-120 HOURS	120-144 HOURS	144-168 HOURS
NIL	NIL	NIL	NIL	NIL	NIL	NIL

**\*NOTE: EVERY 24HR FORECAST IS VALID UPTO 0300 UTC (0830 IST) OF NEXT DAY**

**REMARKS:** NIL



321 947  
 IMD, DELHI

Cloud distribution: (a) Isolated: <25%, Scattered:25-50%, Broken: 51-75%, Solid:>75%, Convection Intensity: (a) Weak: Cloud Top Temperature(CTT)>-25°C, (b) Moderate: CTT:-25°Cto-40°C, (c) Intense: CTT: -41°Cto -70°C and (d) Very Intense::Less than -70°C Probability of cyclogenesis (formation of depression) :NIL:0%, LOW:1-33%, MODERATE:34-66% and HIGH:67-100%  
 This is a guidance Bulletin for WMO/ESCAP Panel Member countries. Visit respective National websites for Country specific Bulletins.