



**REGIONAL SPECIALISED METEOROLOGICAL CENTRE-TROPICAL CYCLONES, NEW DELHI
TROPICAL WEATHER OUTLOOK**

DEMS-RSMC TROPICAL CYCLONES NEW DELHI DATED 10.01.2025

TROPICAL WEATHER OUTLOOK FOR THE NORTH INDIAN OCEAN (THE BAY OF BENGAL AND THE ARABIAN SEA) VALID FOR THE NEXT 168 HOURS ISSUED AT 0600 UTC OF 10.01.2025 BASED ON 0300 UTC OF 10.01.2025.

BAY OF BENGAL:

Yesterday's cyclonic circulation over Southeast Bay of Bengal lay over Southeast Bay of Bengal and adjoining Southwest Bay of Bengal extending upto 3.1 km above mean sea level at 0300 UTC of today, the 10th January, 2025.

Scattered low and medium clouds with embedded intense to very intense convection lay over south Bay of Bengal. Scattered low and medium clouds with embedded isolated moderate to intense convection lay over central Bay of Bengal, Andaman Sea.

***PROBABILITY OF CYCLOGENESIS (FORMATION OF DEPRESSION) DURING NEXT 168 HRS:**

24 HOURS	24-48 HOURS	48-72 HOURS	72-96 HOURS	96-120 HOURS	120-144 HOURS	144-168 HOURS
NIL	NIL	NIL	NIL	NIL	NIL	NIL

***NOTE: EVERY 24HR FORECAST IS VALID UPTO 0300 UTC (0830 IST) OF NEXT DAY**

ARABIAN SEA:

Yesterday's cyclonic circulation over southeast Arabian Sea off Kerala coast at 3.1 km above mean sea level became less marked at 0300 UTC of today, the 10th January, 2025.

Scattered low and medium clouds with embedded intense to very intense convection lay over southeast Arabian Sea adjoining Equatorial Indian Ocean. Scattered low and medium clouds with embedded isolated weak to moderate convection lay over eastcentral Arabian Sea, Maldives, Comorin & Lakshadweep islands area.

***PROBABILITY OF CYCLOGENESIS (FORMATION OF DEPRESSION) DURING NEXT 168 HRS:**

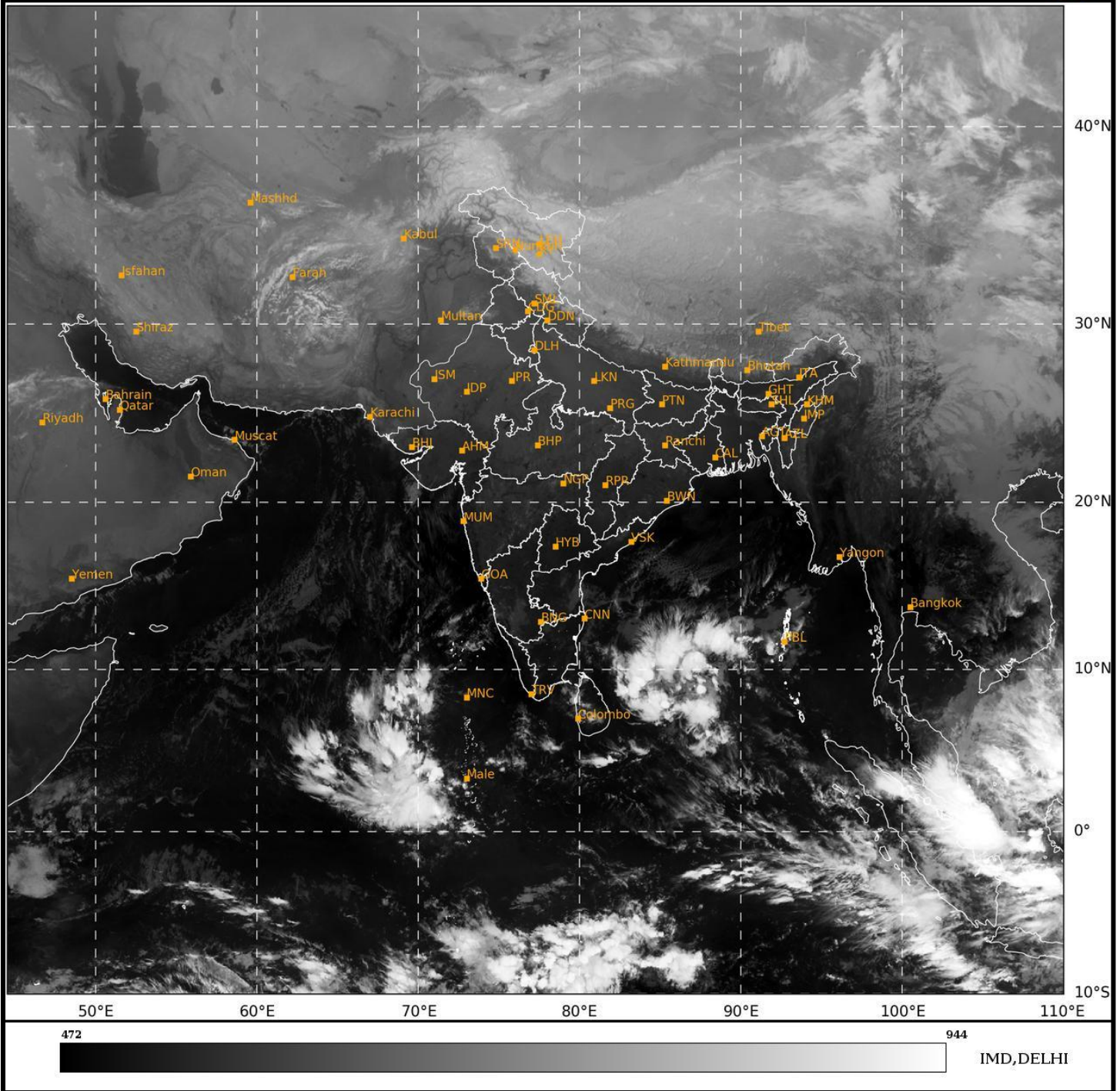
24 HOURS	24-48 HOURS	48-72 HOURS	72-96 HOURS	96-120 HOURS	120-144 HOURS	144-168 HOURS
NIL	NIL	NIL	NIL	NIL	NIL	NIL

***NOTE: EVERY 24HR FORECAST IS VALID UPTO 0300 UTC (0830 IST) OF NEXT DAY**

REMARKS: NIL

SAT : INSAT-3DR IMG
IMG_TIR1 10.8 um
L1C Mercator

10-01-2025/(0245 to 0312) GMT
10-01-2025/(0815 to 0842) IST



Cloud distribution: (a) Isolated: <25%, Scattered:25-50%, Broken: 51-75%, Solid:>75%, Convection Intensity: (a) Weak: Cloud Top Temperature (CTT) >-25°C, (b) Moderate: CTT: - 25°C to -40°C, (c) Intense: CTT: - 41°C to -70°C and (d) Very Intense: : Less than -70°C
PROBABILITY OF CYCLOGENESIS (FORMATION OF DEPRESSION):NIL: 0%, LOW: 1-33%, , MODERATE: 34-66% AND HIGH: 67-100%
This is a guidance Bulletin for WMO/ESCAP Panel Member countries. Visit respective National websites for Country specific Bulletins