



REGIONAL SPECIALISED METEOROLOGICAL CENTRE -TROPICAL CYCLONES, NEW DELHI
TROPICAL WEATHER OUTLOOK

DEMS-RSMC TROPICAL CYCLONES NEW DELHI DATED 12.09.2025

TROPICAL WEATHER OUTLOOK FOR THE NORTH INDIAN OCEAN (THE BAY OF BENGAL AND THE ARABIAN SEA) VALID FOR THE NEXT 168 HOURS ISSUED AT 0600 UTC OF 12.09.2025 BASED ON 0300 UTC OF 12.09.2025.

BAY OF BENGAL:

A low pressure area has formed over northwest & adjoining westcentral Bay of Bengal off south Odisha-north Andhra Pradesh coasts with associated cyclonic circulation at 0300 UTC of today, 12th September, 2025 and extended upto 5.8km above mean sea level and tilting southwestwards with height. It is likely to move west-northwestwards across south Odisha and adjoining north Andhra Pradesh and south Chhattisgarh during next 2 days.

Scattered to broken low and medium clouds with embedded intense to very intense convection lay over westcentral & south Bay of Bengal and moderate to intense convection over rest of Bay of Bengal and Andaman Sea.

***PROBABILITY OF CYCLOGENESIS (FORMATION OF DEPRESSION) DURING NEXT 168 HRS**

24 HOURS	24-48 HOURS	48-72 HOURS	72-96 HOURS	96-120 HOURS	120-144 HOURS	144-168 HOURS
NIL	NIL	NIL	NIL	NIL	NIL	NIL

***NOTE: EVERY 24HR FORECAST IS VALID UPTO 0300 UTC (0830 IST) OF NEXT DAY**

ARABIAN SEA:

The Well-marked low pressure area over northwest Arabian Sea and adjoining southwest Pakistan weakened into a low pressure area over the same region at 12 UTC of 11th September, 2025. It became less marked over northwest Arabian Sea at 0000 UTC of 12th September.

Scattered low and medium clouds with embedded moderate to intense convection lay over eastcentral & southeast Arabian Sea and Maldives area. Scattered low and medium clouds with embedded isolated weak to moderate convection lay over rest of Arabian Sea & Lakshadweep Island area.

***PROBABILITY OF CYCLOGENESIS (FORMATION OF DEPRESSION) DURING NEXT 168 HRS**

:

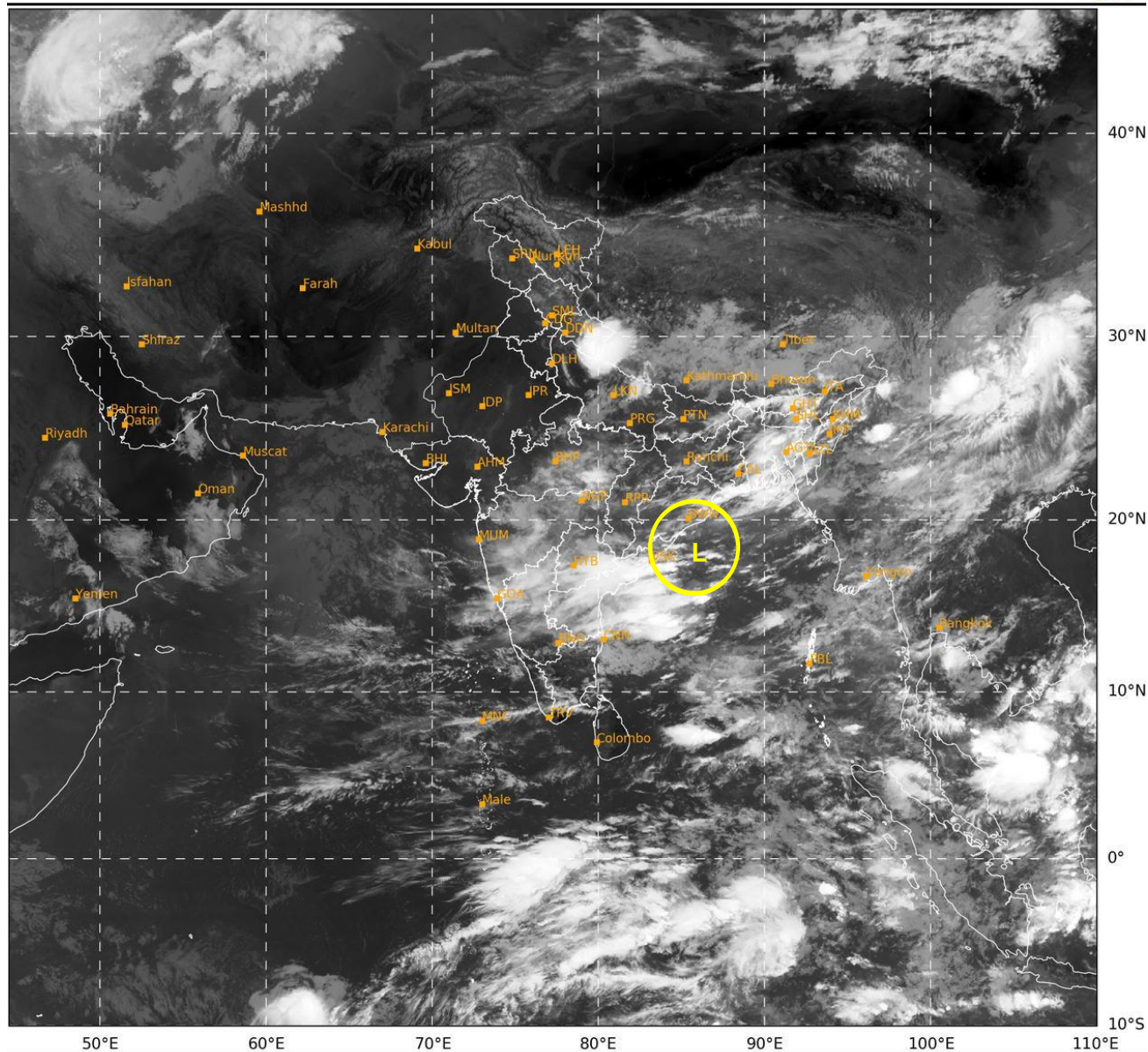
24 HOURS	24-48 HOURS	48-72 HOURS	72-96 HOURS	96-120 HOURS	120-144 HOURS	144-168 HOURS
NIL	NIL	NIL	NIL	NIL	NIL	NIL

***NOTE: EVERY 24HR FORECAST IS VALID UPTO 0300 UTC (0830 IST) OF NEXT DAY**

REMARKS: NIL

SAT : INSAT-3DR IMG
IMG_TIR1 10.8 um
L1C Mercator

12-09-2025/(0315 to 0342) GMT
12-09-2025/(0845 to 0912) IST



L: Low Pressure Area