



**REGIONAL SPECIALISED METEOROLOGICAL CENTRE -TROPICAL CYCLONES, NEW DELHI  
TROPICAL WEATHER OUTLOOK**

**DEMS-RSMC TROPICAL CYCLONES NEW DELHI DATED 04.05.2026**

**TROPICAL WEATHER OUTLOOK FOR THE NORTH INDIAN OCEAN (THE BAY OF BENGAL AND THE ARABIAN SEA) VALID FOR THE NEXT 168 HOURS ISSUED AT 0600 UTC OF 04.05.2026 BASED ON 0300 UTC OF 04.05.2026.**

**BAY OF BENGAL:**

Scattered to broken low to medium clouds with embedded intense to very intense convection lay over the westcentral Bay of Bengal off the south Andhra Pradesh coast and south Bay of Bengal. Scattered low to medium clouds with embedded moderate to intense convection lay over the Andaman Sea and isolated weak to moderate convection lay over the rest of the Bay of Bengal.

**\*PROBABILITY OF CYCLOGENESIS (FORMATION OF DEPRESSION) DURING NEXT 168 HRS)**

24 HOURS	24-48 HOURS	48-72 HOURS	72-96 HOURS	96-120 HOURS	120-144 HOURS	144-168 HOURS
NIL	NIL	NIL	NIL	NIL	NIL	NIL

**\*NOTE: EVERY 24HR FORECAST IS VALID UPTO 0300 UTC (0830 IST) OF NEXT DAY**

**ARABIAN SEA:**

Scattered to broken, low and medium clouds with embedded intense to very intense convection lay over the Comorin area. Scattered low to medium clouds with embedded moderate to intense convection lay over the south Arabian Sea south of latitude 10.0<sup>0</sup>N, Maldives area and isolated weak to moderate convection lay over the Lakshadweep Islands area.

**\*PROBABILITY OF CYCLOGENESIS (FORMATION OF DEPRESSION) DURING NEXT 168 HRS:**

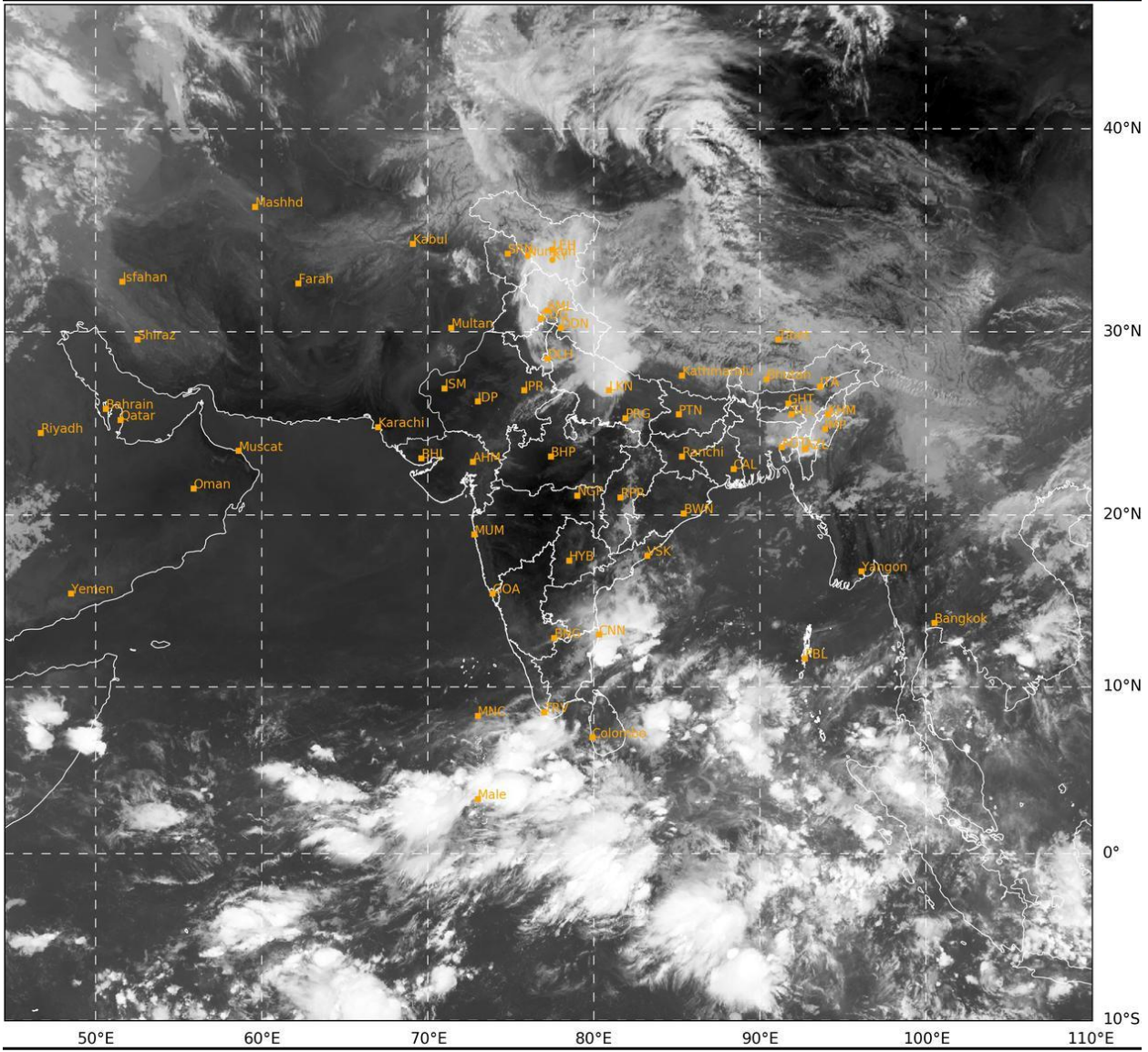
24 HOURS	24-48 HOURS	48-72 HOURS	72-96 HOURS	96-120 HOURS	120-144 HOURS	144-168 HOURS
NIL	NIL	NIL	NIL	NIL	NIL	NIL

**\*NOTE: EVERY 24HR FORECAST IS VALID UPTO 0300 UTC (0830 IST) OF NEXT DAY**

**REMARKS:** Nil

SAT : INSAT-3DR IMG  
 IMG\_TIR1 10.8 um  
 LIC Mercator

04-05-2026/(0315 to 0342) GMT  
 04-05-2026/(0845 to 0912) IST



Cloud distribution: (a) Isolated: <25%, Scattered:25-50%, Broken: 51-75%, Solid:>75%, Convection Intensity: (a) Weak: Cloud Top Temperature(CTT)>-25°C, (b) Moderate: CTT:-25°Cto-40°C, (c) Intense: CTT: -41°Cto -70°C and (d) Very Intense::Less than -70°C Probability of cyclogenesis (formation of depression) :NIL:0%, LOW:1-33%, MODERATE:34-66% and HIGH:67-100%  
 This is a guidance Bulletin for WMO/ESCAP Panel Member countries. Visit respective National websites for Country specific Bulletins.