



**REGIONAL SPECIALISED METEOROLOGICAL CENTRE -TROPICAL CYCLONES, NEW DELHI**  
**TROPICAL WEATHER OUTLOOK**

**DEMS-RSMC TROPICAL CYCLONES NEW DELHI DATED 18.09.2025**

**TROPICAL WEATHER OUTLOOK FOR THE NORTH INDIAN OCEAN (THE BAY OF BENGAL AND THE ARABIAN SEA) VALID FOR THE NEXT 168 HOURS ISSUED AT 0600 UTC OF 18.09.2025 BASED ON 0300 UTC OF 18.09.2025.**

**BAY OF BENGAL:**

Scattered to broken low and medium clouds with embedded intense to very intense convection lay over eastcentral & south Bay of Bengal and Andaman Sea. Scattered low and medium clouds with embedded moderate to intense convection lay over northeast & westcentral Bay of Bengal and isolated weak convection lay over northwest Bay of Bengal.

**\*PROBABILITY OF CYCLOGENESIS (FORMATION OF DEPRESSION) DURING NEXT 168 HRS**

24 HOURS	24-48 HOURS	48-72 HOURS	72-96 HOURS	96-120 HOURS	120-144 HOURS	144-168 HOURS
NIL	NIL	NIL	NIL	NIL	NIL	NIL

**\*NOTE: EVERY 24HR FORECAST IS VALID UPTO 0300 UTC (0830 IST) OF NEXT DAY**

**ARABIAN SEA:**

Scattered low and medium clouds with embedded intense to very intense convection lay over eastcentral & southeast Arabian Sea, Lakshadweep Island area, Maldives and Comorin area. Scattered low and medium clouds with embedded isolated weak to moderate convection lay over rest Arabian Sea, Gulf of Kutch & Gulf of Cambay.

**\*PROBABILITY OF CYCLOGENESIS (FORMATION OF DEPRESSION) DURING NEXT 168 HRS**

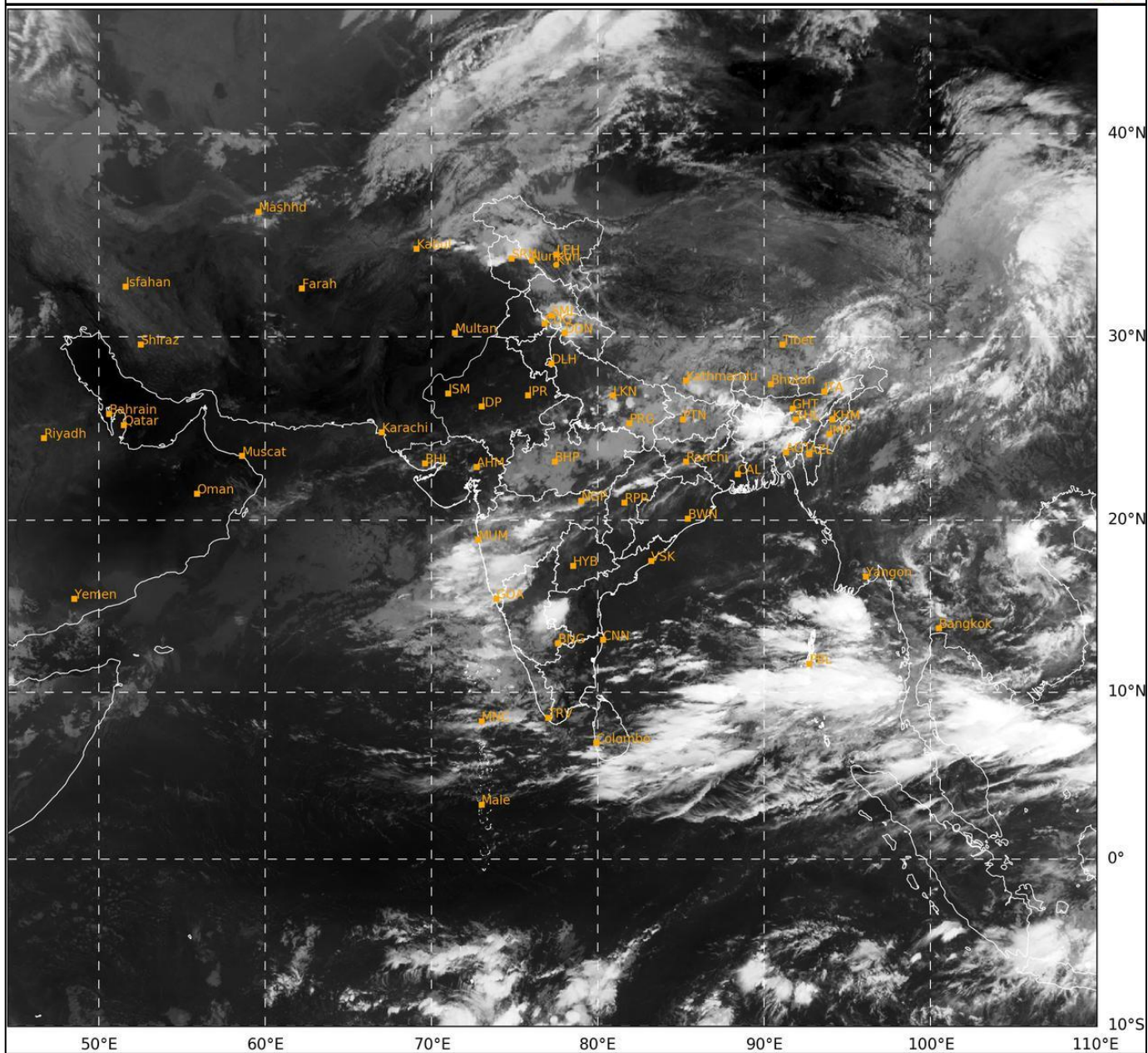
24 HOURS	24-48 HOURS	48-72 HOURS	72-96 HOURS	96-120 HOURS	120-144 HOURS	144-168 HOURS
NIL	NIL	NIL	NIL	NIL	NIL	NIL

**\*NOTE: EVERY 24HR FORECAST IS VALID UPTO 0300 UTC (0830 IST) OF NEXT DAY**

**REMARKS:** NIL

SAT : INSAT-3DR IMG  
IMG\_TIR1 10.8 um  
L1C Mercator

18-09-2025/(0315 to 0342) GMT  
18-09-2025/(0845 to 0912) IST



449

942

IMD, DELHI