



**REGIONAL SPECIALISED METEOROLOGICAL CENTRE-TROPICAL CYCLONES, NEW DELHI  
TROPICAL WEATHER OUTLOOK**

---

**DEMS-RSMC TROPICAL CYCLONES NEW DELHI DATED 30.08.2020**

**TROPICAL WEATHER OUTLOOK FOR NORTH INDIAN OCEAN (THE BAY OF BENGAL AND ARABIAN SEA) VALID FOR NEXT 120 HOURS ISSUED AT 0600 UTC OF 30.08.2020 BASED ON 0300 UTC OF 30.08.2020.**

**BAY OF BENGAL:**

SCATTERED LOW AND MEDIUM CLOUDS WITH EMBEDDED INTENSE TO VERY INTENSE CONVECTION LAY OVER SOUTH BAY OF BENGAL. SCATTERED LOW AND MEDIUM CLOUDS WITH EMBEDDED ISOLATED MODERATE TO INTENSE CONVECTION LAY OVER NORTHEAST AND WESTCENTRAL BAY OF BENGAL OFF SOUTH COASTAL ANDHRA PRADESH AND ANDAMAN SEA.

**PROBABILITY OF CYCLOGENESIS DURING NEXT 120 HRS:**

24 HOURS	24-48 HOURS	48-72 HOURS	72-96 HOURS	96-120 HOURS
NIL	NIL	NIL	NIL	NIL

**ARABIAN SEA:**

SCATTERED LOW AND MEDIUM CLOUDS WITH EMBEDDED INTENSE TO VERY INTENSE CONVECTION LAY OVER GULF OF CAMBAY AND GULF OF KUTCH. SCATTERED LOW AND MEDIUM CLOUDS WITH EMBEDDED MODERATE TO INSTENSE CONVECTION LAY OVER NORTHEAST, EASTCENTRAL AND SOUTHEAST ARABIAN SEA. SCATTERED LOW AND MEDIUM CLOUDS WITH EMBEDDED ISOLATED WEAK TO MODERATE CONVECTION LAY OVER REST ARABIAN SEA.

**PROBABILITY OF CYCLOGENESIS DURING NEXT 120 HRS:**

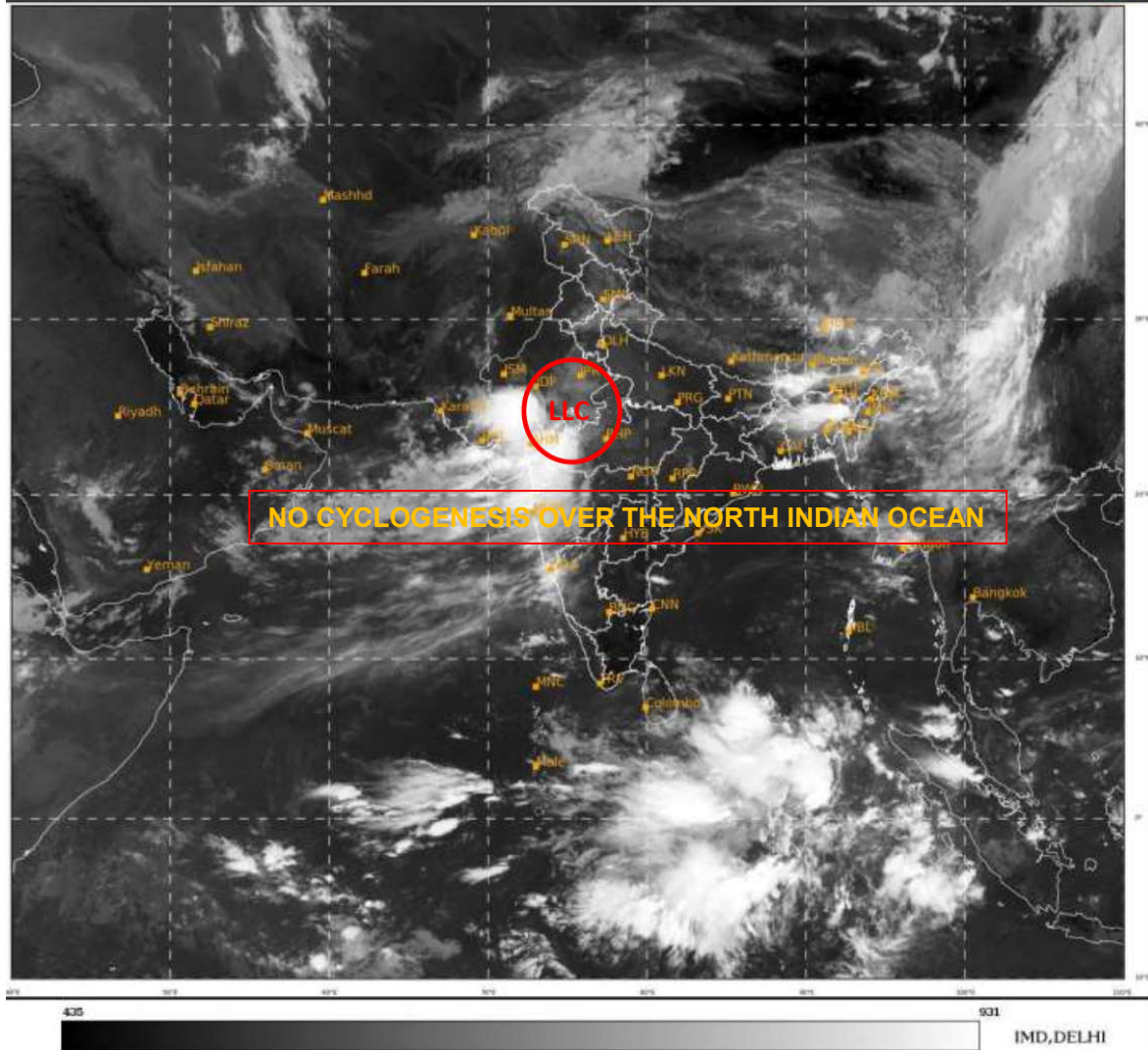
24 HOURS	24-48 HOURS	48-72 HOURS	72-96 HOURS	96-120 HOURS
NIL	NIL	NIL	NIL	NIL

**REMARKS: NIL**

---

**PROBABILITY OF CYCLOGENESIS (FORMATION OF DEPRESSION)**

**NIL: 0%, LOW: 1-25%, FAIR: 26-50%, MODERATE: 51-75% AND HIGH: 76-100%**



**PROBABILITY OF CYCLOGENESIS (FORMATION OF DEPRESSION)**  
NIL: 0%, LOW: 1-25%, FAIR: 26-50%, MODERATE: 51-75% AND HIGH: 76-100%