



**REGIONAL SPECIALISED METEOROLOGICAL CENTRE-TROPICAL CYCLONES, NEW DELHI
TROPICAL WEATHER OUTLOOK**

DEMS-RSMC TROPICAL CYCLONES NEW DELHI DATED 12.08.2020

TROPICAL WEATHER OUTLOOK FOR NORTH INDIAN OCEAN (THE BAY OF BENGAL AND ARABIAN SEA) VALID FOR NEXT 120 HOURS ISSUED AT 0600 UTC OF 12.08.2020 BASED ON 0300 UTC OF 12.08.2020.

BAY OF BENGAL:

A LOW PRESSURE AREA IS LIKELY TO FORM OVER NORTHWEST BAY OF BENGAL & NEIGHBOURHOOD AROUND 13TH AUGUST.

SCATTERED LOW AND MEDIUM CLOUDS WITH EMBEDDED EXTENDING INTENSE TO VERY INTENSE CONVECTION LAY OVER EASTCENTRAL AND WESTCENTRAL AND ADJOINING SOUTHWEST BAY OF BENGAL AND NORTH ANDAMAN SEA.. SCATTERED LOW AND MEDIUM CLOUDS WITH EMBEDDED ISOLATED MODERATE TO INTENSE CONVECTION LAY OVER NORTH AND SOUTHEAST BAY OF BENGAL AND SOUTH ANDAMAN SEA.

PROBABILITY OF CYCLOGENESIS DURING NEXT 120 HRS:

24 HOURS	24-48 HOURS	48-72 HOURS	72-96 HOURS	96-120 HOURS
NIL	NIL	NIL	NIL	NIL

ARABIAN SEA:

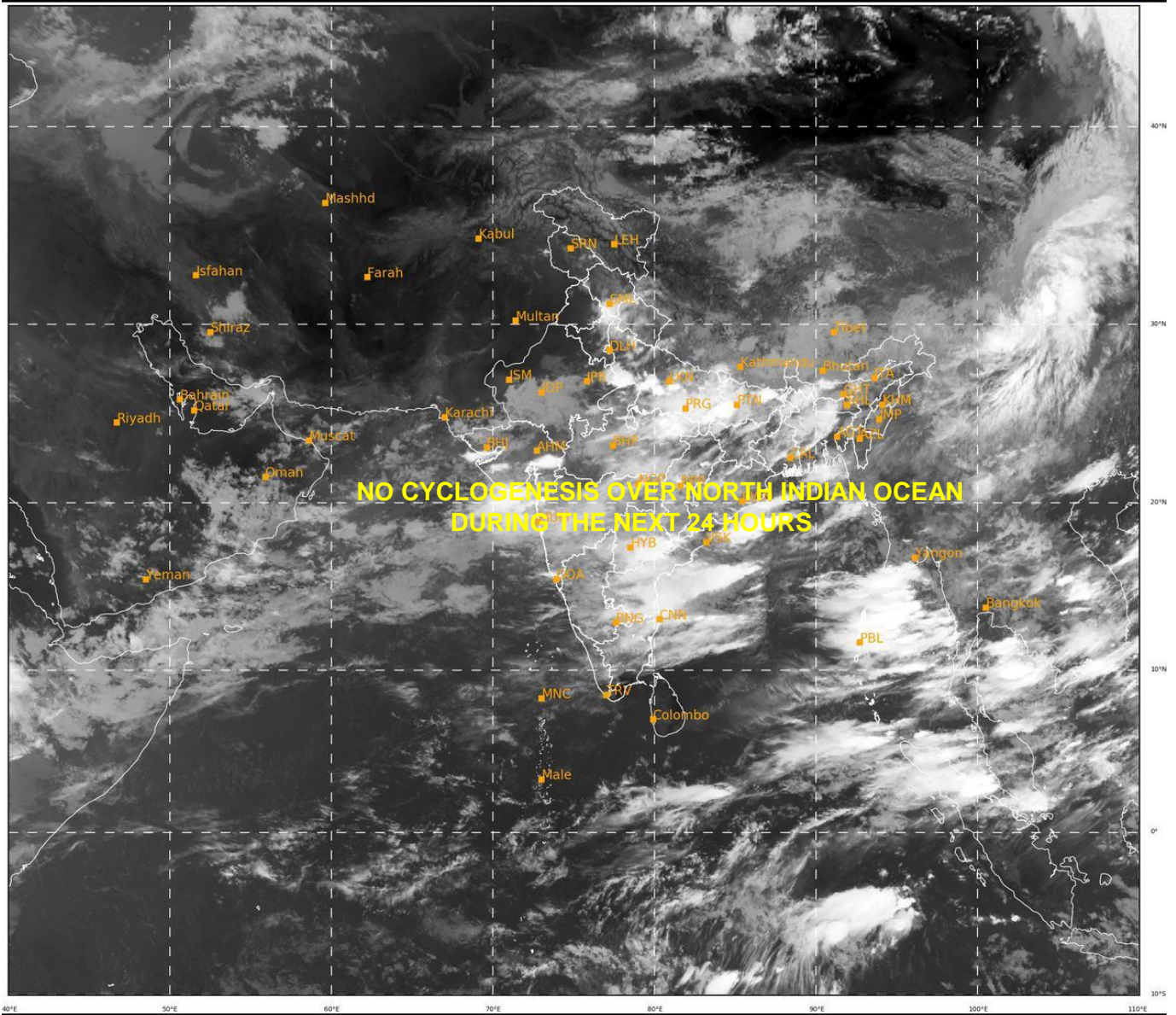
SCATTERED LOW/MEDIUM CLOUDS WITH EMBEDDED MODERATE TO INTENSE CONVECTION LAY OVER EASTCENTRAL ARABIAN SEA OFF MAHARASTRA COAST AND GULF OF OMAN. SCATTERED LOW/MEDIUM CLOUDS WITH EMBEDDED WEAK TO MODERATE CONVECTION LAY OVER THE SOUTHEAST AND WESTCENTRAL ARABIAN SEA.

PROBABILITY OF CYCLOGENESIS DURING NEXT 120 HRS:

24 HOURS	24-48 HOURS	48-72 HOURS	72-96 HOURS	96-120 HOURS
NIL	NIL	NIL	NIL	NIL

REMARKS: NIL

PROBABILITY OF CYCLOGENESIS (FORMATION OF DEPRESSION)
NIL: 0%, LOW: 1-25%, FAIR: 26-50%, MODERATE: 51-75% AND HIGH: 76-100%



405

931

IMD, DELHI

PROBABILITY OF CYCLOGENESIS (FORMATION OF DEPRESSION)
NIL: 0%, LOW: 1-25%, FAIR: 26-50%, MODERATE: 51-75% AND HIGH: 76-100%

PROBABILITY OF CYCLOGENESIS (FORMATION OF DEPRESSION)
NIL: 0%, LOW: 1-25%, FAIR: 26-50%, MODERATE: 51-75% AND HIGH: 76-100%