



**REGIONAL SPECIALISED METEOROLOGICAL CENTRE -TROPICAL CYCLONES, NEW DELHI
TROPICAL WEATHER OUTLOOK**

DEMS-RSMC TROPICAL CYCLONES NEW DELHI DATED 28.06.2026

TROPICAL WEATHER OUTLOOK FOR THE NORTH INDIAN OCEAN (THE BAY OF BENGAL AND THE ARABIAN SEA) VALID FOR THE NEXT 168 HOURS ISSUED AT 0600 UTC OF 28.06.2026 BASED ON 0300 UTC OF 28.06.2026.

BAY OF BENGAL:

Yesterday's upper air cyclonic circulation over westcentral Bay of Bengal & adjoining south Coastal Andhra Pradesh at 5.8 km above mean sea level became less marked at 0300 UTC of today, 28th June, 2026.

Scattered to broken low and medium clouds with embedded intense to very intense convection lay over the South Bay of Bengal, Andaman Sea and Gulf of Martaban. Scattered low and medium clouds with embedded moderate to intense convection lay over rest of the Bay of Bengal.

***PROBABILITY OF CYCLOGENESIS (FORMATION OF DEPRESSION) DURING NEXT 168 HRS)**

24 HOURS	24-48 HOURS	48-72 HOURS	72-96 HOURS	96-120 HOURS	120-144 HOURS	144-168 HOURS
NIL	NIL	NIL	NIL	NIL	NIL	NIL

***NOTE: EVERY 24HR FORECAST IS VALID UPTO 0300 UTC (0830 IST) OF NEXT DAY**

ARABIAN SEA:

An upper air cyclonic circulation lay over eastcentral Arabian Sea off Maharashtra coast between 5.8 and 7.6 km above mean sea level at 0300 UTC of today, 28th June, 2026.

Scattered to broken low and medium clouds with embedded intense to intense convection lay over eastcentral and southeast Arabian Sea, Lakshadweep islands area, Maldives, and the Comorin area. Scattered low and medium clouds with embedded isolated weak to moderate convection lay over southwest Arabian Sea.

***PROBABILITY OF CYCLOGENESIS (FORMATION OF DEPRESSION) DURING NEXT 168 HRS:**

24 HOURS	24-48 HOURS	48-72 HOURS	72-96 HOURS	96-120 HOURS	120-144 HOURS	144-168 HOURS
NIL	NIL	NIL	NIL	NIL	NIL	NIL

***NOTE: EVERY 24HR FORECAST IS VALID UPTO 0300 UTC (0830 IST) OF NEXT DAY**

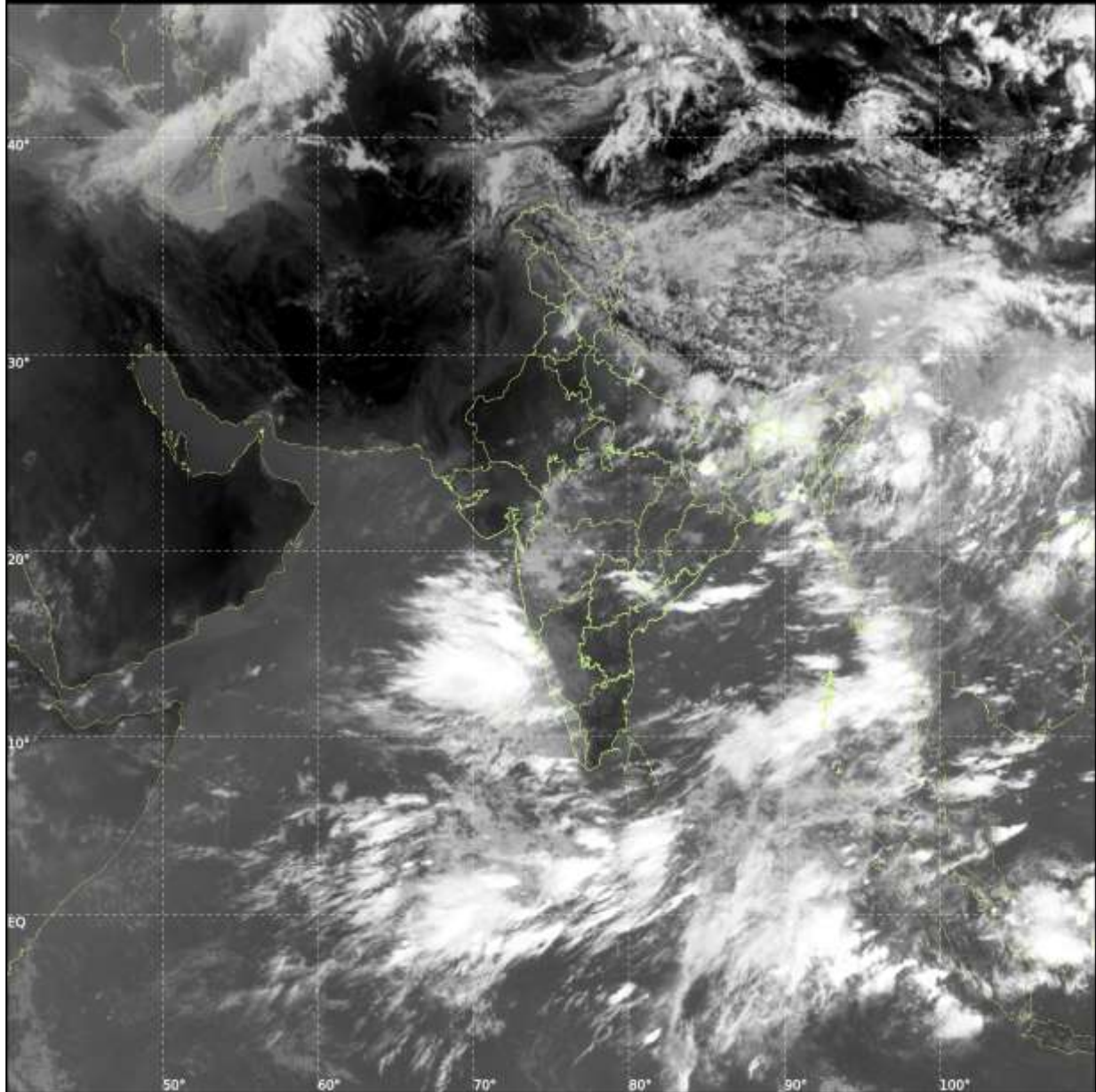
REMARKS: NIL



INSAT-3DS IMG, Thermal Infrared1 Count @ 10.83 μm
GMT:28-06-2026/(0500-0527) IST:28-06-2026/(1030-1057)
LIC MERCATOR (LINEAR STRETCH: 1%)

343

903



Cloud distribution: (a) Isolated: <25%, Scattered:25-50%, Broken: 51-75%, Solid:>75%, Convection Intensity: (a) Weak: Cloud Top Temperature(CTT)>-25°C, (b) Moderate: CTT:-25°Cto-40°C, (c) Intense: CTT: -41°Cto -70°C and (d) Very Intense::Less than -70°C Probability of cyclogenesis (formation of depression) :NIL:0%, LOW:1-33%, MODERATE:34-66% and HIGH:67-100%
This is a guidance Bulletin for WMO/ESCAP Panel Member countries. Visit respective National websites for Country specific Bulletins.