



**REGIONAL SPECIALISED METEOROLOGICAL CENTRE-TROPICAL CYCLONES, NEW DELHI
TROPICAL WEATHER OUTLOOK**

DEMS-RSMC TROPICAL CYCLONES NEW DELHI DATED 12.12.2020

TROPICAL WEATHER OUTLOOK FOR NORTH INDIAN OCEAN (THE BAY OF BENGAL AND ARABIAN SEA) VALID FOR NEXT 120 HOURS ISSUED AT 0600 UTC OF 12.12.2020 BASED ON 0300 UTC OF 12.12.2020 .

BAY OF BENGAL:

SCATTERED LOW AND MEDIUM CLOUDS WITH EMBEDDED INTENSE TO VERY INTENSE CONVECTION LAY OVER SOUTH BAY OF BENGAL & SOUTH ANDAMAN SEA.

PROBABILITY OF CYCLOGENESIS DURING NEXT 120 HRS:

24 HOURS	24-48 HOURS	48-72 HOURS	72-96 HOURS	96-120 HOURS
NIL	NIL	NIL	NIL	NIL

ARABIAN SEA:

YESTERDAYS LOW PRESSURE AREA OVER CENTRAL PARTS OF SOUTH ARABIAN SEA NOW LIES OVER CENTRAL PARTS OF SOUTH ARABIAN SEA & ADJOINING AREAS OF CENTRAL ARABIAN SEA WITH ASSOCIATED CYCLONIC CIRCULATION EXTENDS UPTO 3.1 KM ABOVE MEAN SEA LEVEL.

SCATTERED LOW AND MEDIUM CLOUDS WITH EMBEDDED INTENSE TO VERY INTENSE CONVECTION LAY OVER CENTRAL & SOUTH ARABIAN SEA.
SCATTERED LOW AND MEDIUM CLOUDS WITH EMBEDDED ISOLATED CONVECTION LAY OVER NORTHEAST ARABIAN SEA OFF GUJRAT COAST.

PROBABILITY OF CYCLOGENESIS DURING NEXT 120 HRS :

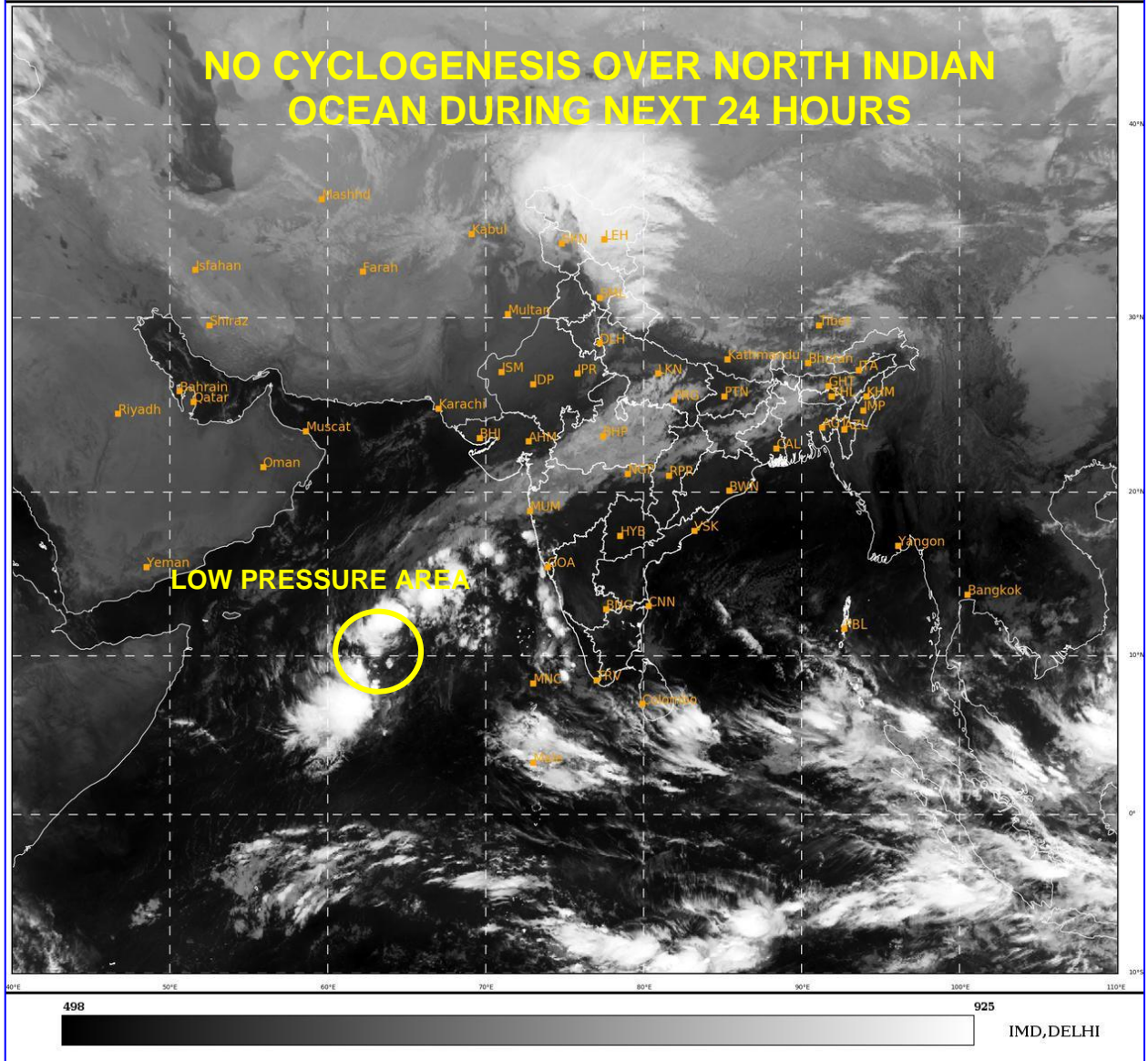
24 HOURS	24-48 HOURS	48-72 HOURS	72-96 HOURS	96-120 HOURS
NIL	NIL	NIL	NIL	NIL

REMARKS:

Nil

SAT : INSAT-3D IMG
IMG_TIR1 10.8 um
LIC Mercator

12-12-2020/(0300 to 0327) GMT
12-12-2020/(0830 to 0857) IST



PROBABILITY OF CYCLOGENESIS (FORMATION OF DEPRESSION):NIL: 0%, LOW: 1-25%, FAIR: 26-50%, MODERATE: 51-75% AND HIGH: 76-100%

✚ This is a guidance Bulletin for the WMO/ESCAP Panel Member countries,. Please visit respective National websites for Country specific Bulletins