

**REGIONAL SPECIALISED METEOROLOGICAL CENTRE-TROPICAL CYCLONES, NEW DELHI  
TROPICAL WEATHER OUTLOOK**

**DEMS-RSMC TROPICAL CYCLONES NEW DELHI DATED 27.01.2023**

**TROPICAL WEATHER OUTLOOK FOR NORTH INDIAN OCEAN (THE BAY OF BENGAL AND THE ARABIAN SEA) VALID FOR NEXT 120 HOURS ISSUED AT 0600 UTC OF 27.01.2023 BASED ON 0300 UTC OF 27.01.2023.**

**BAY OF BENGAL:**

UNDER THE INFLUENCE OF THE YESTERDAY'S CYCLONIC CIRCULATION A LOW PRESSURE AREA FORMED OVER EAST EQUATORIAL INDIAN OCEAN AND ADJOINING SOUTHEAST BAY OF BENGAL AT 0000 UTC OF TODAY, THE 27<sup>TH</sup> JANUARY 2023, IT LAY OVER SOUTHEAST BAY OF BENGAL AND ADJOINING EAST EQUATORIAL INDIAN OCEAN AT 0300 UTC OF TODAY, THE 27<sup>TH</sup> JANUARY, 2023. IT IS VERY LIKELY TO MOVE GRADUALLY WEST-NORTHWESTWARDS AND BECOME WELL-MARKED LOW PRESSURE AREA DURING NEXT 2 DAYS. THEREAFTER, IT WOULD CONTINUE TO MOVE WEST-NORTHWESTWARDS, INTENSIFY FURTHER INTO A DEPRESSION AROUND 31<sup>ST</sup> JAN OVER SOUTHWEST BAY OF BENGAL AND REACH NEAR SRI LANKA COAST AROUND 1<sup>ST</sup> FEB 2023.

SCATTERED TO BROKEN LOW AND MEDIUM CLOUDS WITH EMBEDDED INTENSE TO VERY INTENSE CONVECTION LAY OVER SOUTH BAY OF BENGAL SOUTH OF LAT 10.0N INDIAN OCEAN AND SOUTH ANDAMAN SEA AND MODERATE TO INTENSE CONVECTION LAY OVER REST OF SOUTH WESTCENTRAL BAY OF BENGAL.

**PROBABILITY OF CYCLOGENESIS (FORMATION OF DEPRESSION) DURING NEXT 120 HRS:**

24 HOURS	24-48 HOURS	48-72 HOURS	72-96 HOURS	96-120 HOURS
NIL	NIL	NIL	NIL	MODERATE

**ARABIAN SEA:**

SCATTERED LOW AND MEDIUM CLOUDS WITH EMBEDDED MODERATE TO INTENSE CONVECTION LAY OVER SOUTHEAST ARABIAN SEA & COMORIN AREA AND WEAK TO MODERATE CONVECTION OVER NORTHWEST ARABIAN SEA.

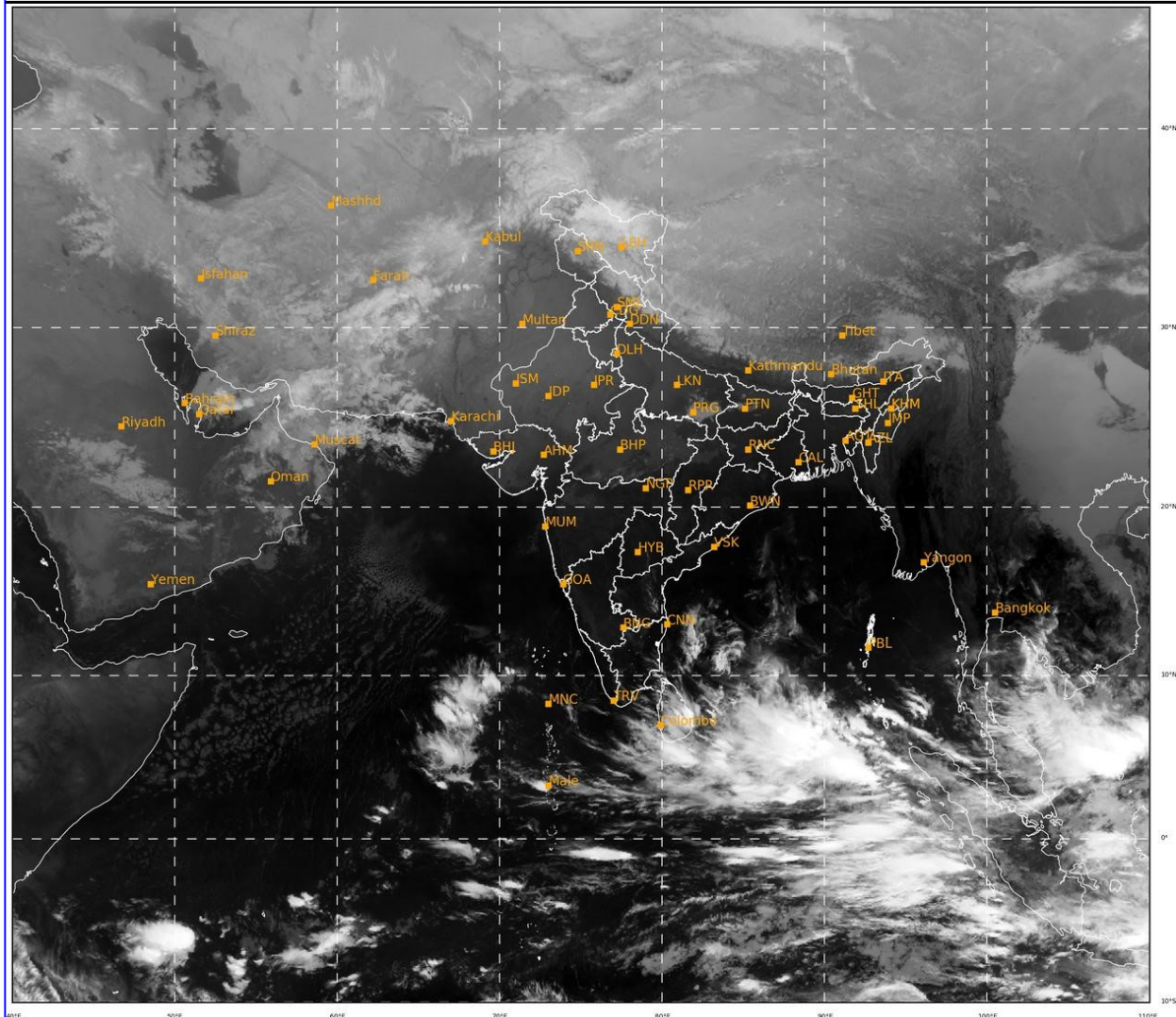
**PROBABILITY OF CYCLOGENESIS (FORMATION OF DEPRESSION) DURING NEXT 120 HRS:**

24 HOURS	24-48 HOURS	48-72 HOURS	72-96 HOURS	96-120 HOURS
NIL	NIL	NIL	NIL	NIL

**REMARKS:** NIL

SAT : INSAT-3D IMG  
IMG\_TIR1 10.8 um  
LIC Mercator

27-01-2023/(0300 to 0327) GMT  
27-01-2023/(0830 to 0857) IST



512

947

IMD, DELHI

Cloud distribution: (a) Isolated: <25%, Scattered:25-50%, Broken: 51-75%, Solid:>75%, Convection Intensity: (a) Weak: Cloud Top Temperature (CTT) >-25°C, (b) Moderate: CTT: - 25°C to -40°C, (c) Intense: CTT: - 41°C to -70°C and (d) Very Intense: : Less than -70°C  
PROBABILITY OF CYCLOGENESIS (FORMATION OF DEPRESSION): NIL: 0%, LOW: 1-33%, MODERATE: 34-66% AND HIGH: 67-100%  
This is a guidance Bulletin for WMO/ESCAP Panel Member countries. Visit respective National websites for Country specific Bulletins