



**REGIONAL SPECIALISED METEOROLOGICAL CENTRE-TROPICAL CYCLONES, NEW DELHI
TROPICAL WEATHER OUTLOOK**

DEMS-RSMC TROPICAL CYCLONES NEW DELHI DATED 13.10.2021

TROPICAL WEATHER OUTLOOK FOR NORTH INDIAN OCEAN (THE BAY OF BENGAL AND ARABIAN SEA) VALID FOR NEXT 120 HOURS ISSUED AT 0600 UTC OF 13.10.2021 BASED ON 0300 UTC OF 13.10.2021.

BAY OF BENGAL:

THE CYCLONIC CIRCULATION OVER NORTH ANDAMAN SEA & NEIGHBOURHOOD LAY OVER EASTCENTRAL BAY OF BENGAL & NEIGHBOURHOOD AT 0000 UTC OF TODAY THE 13TH OCTOBER. IT PERSISTED OVER THE SAME REGION AT 0300 UTC OF TODAY. UNDER ITS INFLUENCE, A LOW PRESSURE AREA IS LIKELY TO FORM OVER EASTCENTRAL BAY OF BENGAL & NEIGHBOURHOOD DURING NEXT 24 HOURS. IT IS LIKELY TO MOVE WEST-NORTHWESTWARDS AND REACH SOUTH ODISHA-NORTH ANDHRA PRADESH COASTS DURING SUBSEQUENT 24 HOURS.

SCATTERED TO BROKEN LOW AND MEDIUM CLOUDS WITH EMBEDDED INTENSE TO VERY INTENSE CONVECTION LAY OVER NORTH BAY OF BENGAL AND MODERATE TO INTENSE CONVECTION LAY OVER REST BAY OF BENGAL, ANDAMAN SEA & GULF OF MARTABAN.

PROBABILITY OF CYCLOGENESIS (FORMATION OF DEPRESSION) DURING NEXT 120 HRS:

24 HOURS	24-48 HOURS	48-72 HOURS	72-96 HOURS	96-120 HOURS
NIL	NIL	NIL	NIL	NIL

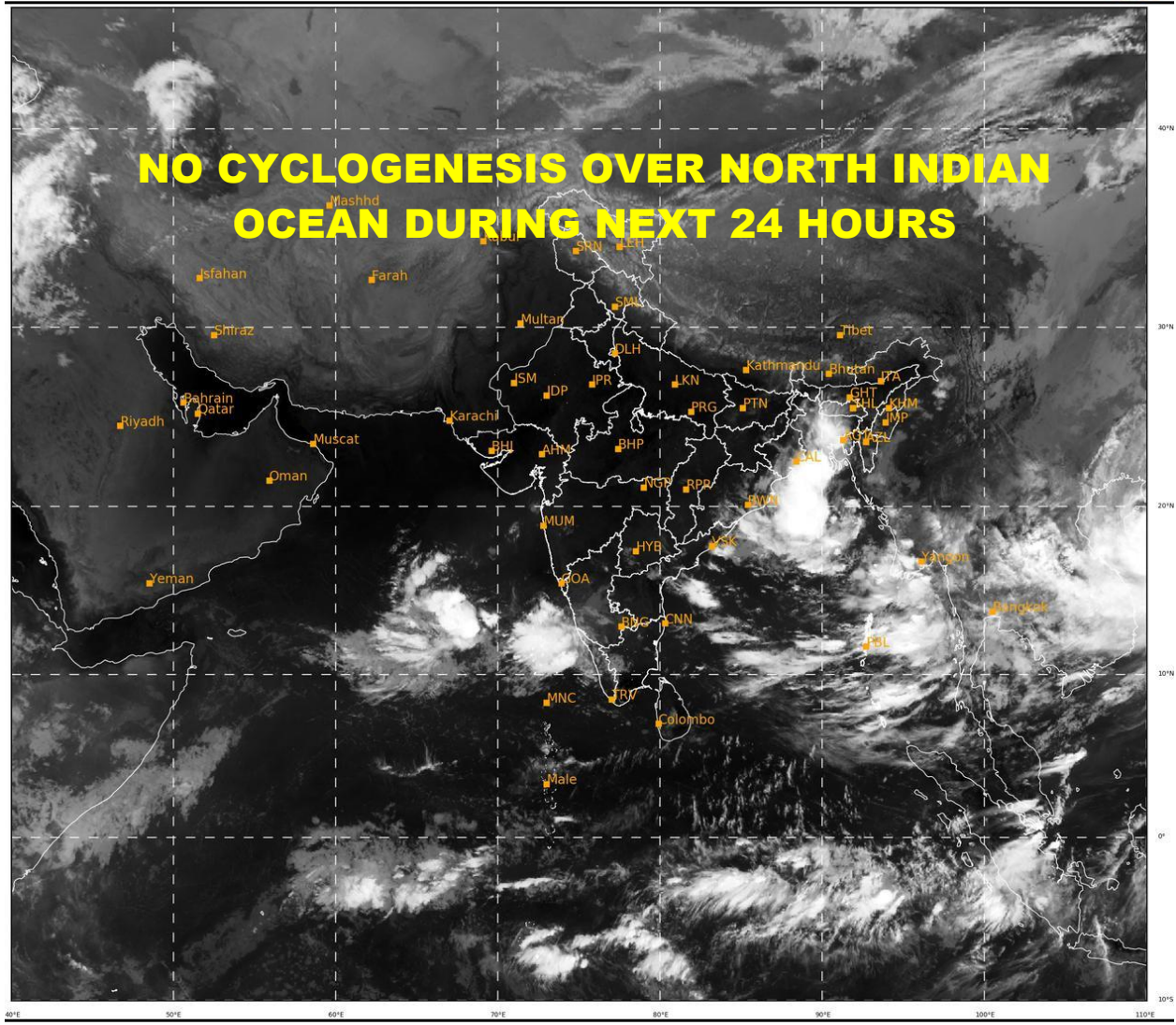
ARABIAN SEA:

SCATTERED LOW AND MEDIUM CLOUDS WITH EMBEDDED INTENSE TO VERY INTENSE CONVECTION LAY OVER SOUTHEAST ADJOINING EASTCENTRAL ARABIAN SEA BETWEEN LAT 10.0°N TO 17.0°N EAST OF LONG 62.0°E.

PROBABILITY OF CYCLOGENESIS (FORMATION OF DEPRESSION) DURING NEXT 120 HRS:

24 HOURS	24-48 HOURS	48-72 HOURS	72-96 HOURS	96-120 HOURS
NIL	NIL	NIL	NIL	NIL

REMARKS: NIL



485

934

IMD, DELHI