



**REGIONAL SPECIALISED METEOROLOGICAL CENTRE-TROPICAL CYCLONES, NEW DELHI
TROPICAL WEATHER OUTLOOK**

DEMS-RSMC TROPICAL CYCLONES NEW DELHI DATED 23.09.2021

TROPICAL WEATHER OUTLOOK FOR NORTH INDIAN OCEAN (THE BAY OF BENGAL OF BENGAL OF BENGAL OF BENGAL AND ARABIAN SEA) VALID FOR NEXT 120 HOURS ISSUED AT 0600 UTC OF 23.09.2021 BASED ON 0300 UTC OF 23.09.2021.

BAY OF BENGAL:

1. THE LOW PRESSURE AREA OVER SOUTHWEST JHARKHAND AND ADJOINING NORTH CHHATTISGARH HAS BECOME LESS MARKED AT 0000 UTC OF 23RD SEPTEMBER.

2. THE CYCLONIC CIRCULATION OVER MYANMAR COAST & ADJOINING GULF OF MARTABAN EXTENDING UPTO MDTROPOSPHERIC LEVELS PERSISTS. IT IS LIKELY TO MOVE NORTHWESTWARDS AND EMERGE INTO NORTHEAST & ADJOINING EASTCENTRAL BAY OF BENGAL AND UNDER ITS INFLUENCE, A LOW PRESSURE AREA IS LIKELY TO FORM OVER THE SAME REGION AROUND 24TH EVENING. IT IS LIKELY TO MOVE WEST-NORTHWESTWARDS TOWARDS ODISHA COAST DURING THE SUBSEQUENT 48 HOURS.

BROKEN LOW AND MEDIUM CLOUDS WITH EMBEDDED INTENSE TO VERY INTENSE CONVECTION LAY OVER EXTREME SOUTH MYANMAR & NEIGHBOURHOOD IN ASSOCIATION WITH LOW LEVEL CIRCULATION OVER THE AREA. MINIMUM CLOUD TOP TEMPERATURE IS -93°C.

BROKEN LOW AND MEDIUM CLOUDS WITH EMBEDDED INTENSE TO VERY INTENSE CONVECTION LAY OVER WEST-CENTRAL BAY OF BENGAL OFF ANDHRA PRADESH ADJOINING NORTH TAMILNADU COASTS EAST-CENTRAL ADJOINING SOUTHEAST BAY OF BENGAL NORTH ANDAMAN SEA GULF OF MARTABAN ADJOINING SOUTH MYANMAR ARAKAN COAST (MINIMUM CLOUD TOP TEMPERATURE IS -93°C). SCATTERED LOW AND MEDIUM CLOUDS WITH EMBEDDED MODERATE TO INTENSE CONVECTION LAY OVER REST OF CENTRAL & NORTH BAY OF BENGAL SOUTH ANDAMAN SEA.

PROBABILITY OF CYCLOGENESIS (FORMATION OF DEPRESSION) DURING NEXT 120 HRS:

24 HOURS	24-48 HOURS	48-72 HOURS	72-96 HOURS	96-120 HOURS
NIL	NIL	NIL	NIL	NIL

ARABIAN SEA:

SCATTERED LOW AND MEDIUM CLOUDS WITH EMBEDDED MODERATE TO INTENSE CONVECTION LAY OVER GULF OF KUTCH, GULF OF CAMBAY AND EAST-CENTRAL ARABIAN SEA OFF SOUTH MAHARASHTRA-KARNATAKA COASTS.

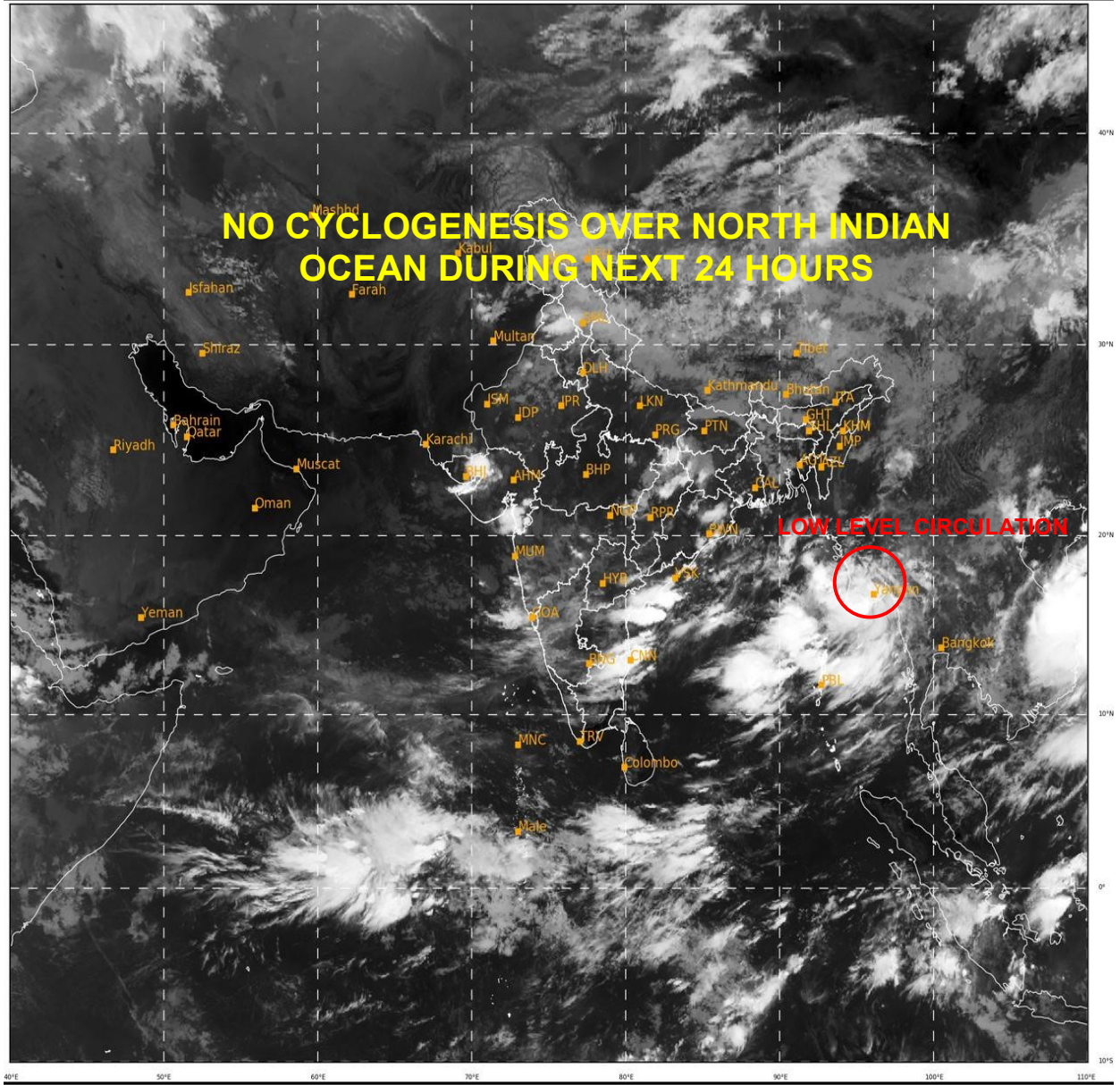
PROBABILITY OF CYCLOGENESIS (FORMATION OF DEPRESSION) DURING NEXT 120 HRS:

24 HOURS	24-48 HOURS	48-72 HOURS	72-96 HOURS	96-120 HOURS
NIL	NIL	NIL	NIL	NIL

REMARKS: NIL

SAT : INSAT-3D IMG
 IMG_TIR1 10.8 um
 L1C Mercator

23-09-2021/(0300 to 0326) GMT
 23-09-2021/(0830 to 0856) IST



490

945

IMD, DELHI

PROBABILITY OF CYCLOGENESIS (FORMATION OF DEPRESSION):NIL: 0%, LOW: 1-25%, FAIR: 26-50%, MODERATE: 51-75% AND HIGH: 76-100%
 This is a guidance Bulletin for the WMO/ESCAP Panel Member countries., Please visit respective National websites for Country specific Bulletins

