



**REGIONAL SPECIALISED METEOROLOGICAL CENTRE -TROPICAL CYCLONES, NEW DELHI
TROPICAL WEATHER OUTLOOK**

DEMS-RSMC TROPICAL CYCLONES NEW DELHI DATED 30.05.2026

TROPICAL WEATHER OUTLOOK FOR THE NORTH INDIAN OCEAN (THE BAY OF BENGAL AND THE ARABIAN SEA) VALID FOR THE NEXT 168 HOURS ISSUED AT 0600 UTC OF 30.05.2026 BASED ON 0300 UTC OF 30.05.2026.

BAY OF BENGAL:

Yesterday's upper air cyclonic circulation over Eastcentral & adjoining Southeast Bay of Bengal lay over Eastcentral Bay of Bengal and extended between 1.5 & 7.6 km above mean sea level at 0300 UTC of today, the 30th May 2026.

Yesterday's upper air cyclonic circulation over Southwest Bay of Bengal and adjoining Tamil Nadu merged with the trough over Eastcentral Bay of Bengal to Lakhsadweep area across westcentral & southeast Bay of Bengal, and Comorin area and lay at 5.8 km above mean sea level at 0300 UTC of today, the 30th May 2026.

Scattered to broken low and medium clouds with embedded intense to very intense convection lay over the central and south Bay of Bengal, Arakan Coast, Andaman Sea, Gulf of Martaban, and Tenasserim Coast. Scattered low and medium clouds with embedded isolated moderate to intense convection lay over the remaining parts of the Bay of Bengal.

***PROBABILITY OF CYCLOGENESIS (FORMATION OF DEPRESSION) DURING NEXT 168 HRS)**

24 HOURS	24-48 HOURS	48-72 HOURS	72-96 HOURS	96-120 HOURS	120-144 HOURS	144-168 HOURS
NIL	NIL	NIL	NIL	NIL	NIL	NIL

***NOTE: EVERY 24HR FORECAST IS VALID UPTO 0300 UTC (0830 IST) OF NEXT DAY**

ARABIAN SEA:

Yesterday's upper air cyclonic circulation over the Southeast Arabian Sea & neighborhood persisted over the same region and lay at 3.1 km above mean sea level at 0300 UTC of today, the 30th May 2026.

Scattered to broken low and medium clouds with embedded intense to very intense convection lay over the south adjoining central Arabian Sea, while moderate to intense convection lay over the Lakshadweep Islands, Maldives, and Comorin area.

***PROBABILITY OF CYCLOGENESIS (FORMATION OF DEPRESSION) DURING NEXT 168 HRS:**

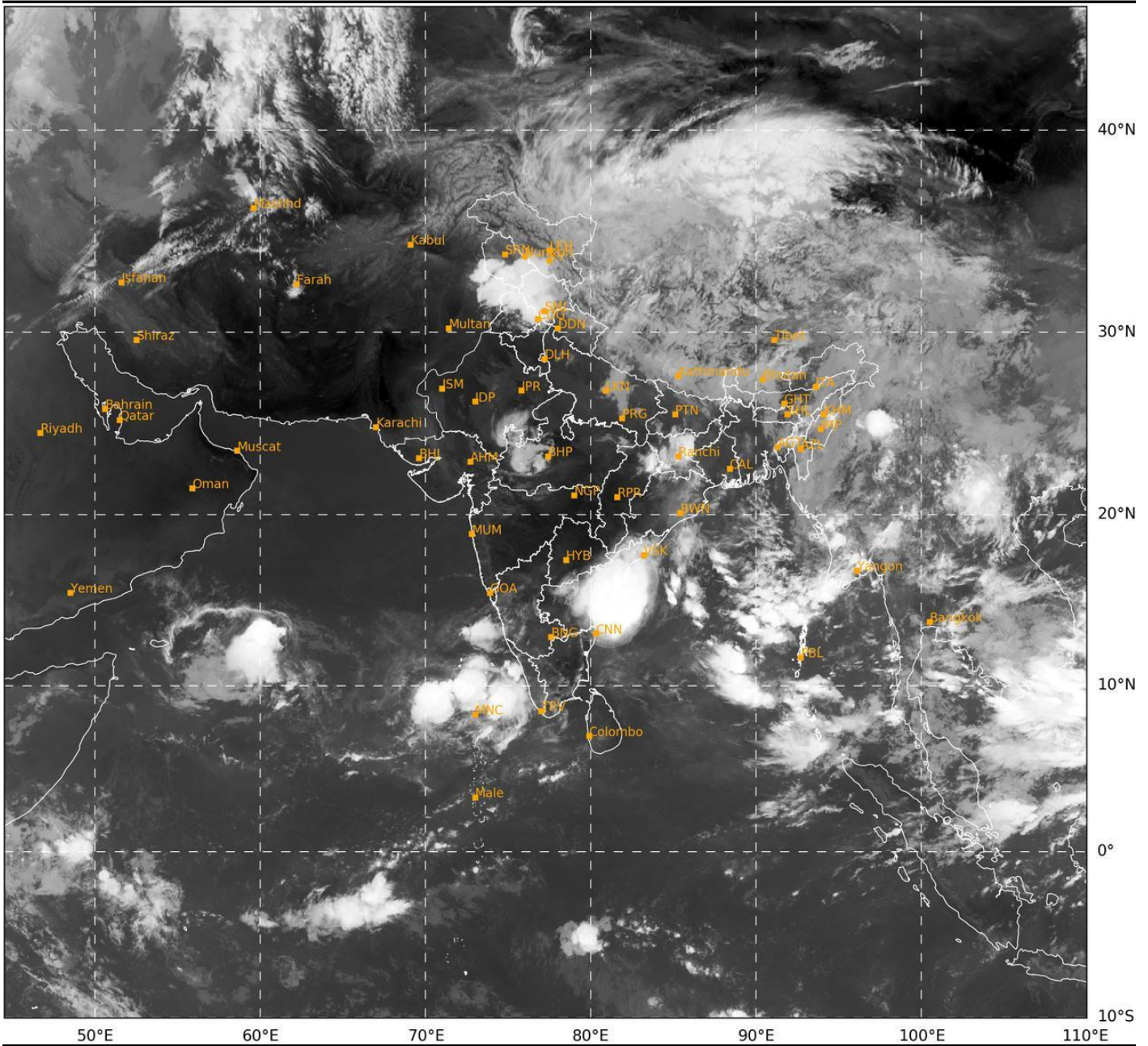
24 HOURS	24-48 HOURS	48-72 HOURS	72-96 HOURS	96-120 HOURS	120-144 HOURS	144-168 HOURS
NIL	NIL	NIL	NIL	NIL	NIL	NIL

***NOTE: EVERY 24HR FORECAST IS VALID UPTO 0300 UTC (0830 IST) OF NEXT DAY**

REMARKS: NIL

Cloud distribution: (a) Isolated: <25%, Scattered:25-50%, Broken: 51-75%, Solid:>75%, Convection Intensity: (a) Weak: Cloud Top Temperature(CTT)>-25°C, (b) Moderate: CTT:-25°Cto-40°C, (c) Intense: CTT: -41°Cto -70°C and (d) Very Intense::Less than -70°C Probability of cyclogenesis (formation of depression) :NIL:0%, LOW:1-33%, MODERATE:34-66% and HIGH:67-100%

This is a guidance Bulletin for WMO/ESCAP Panel Member countries. Visit respective National websites for Country specific Bulletins.



Cloud distribution: (a) Isolated: <25%, Scattered:25-50%, Broken: 51-75%, Solid:>75%, Convection Intensity: (a) Weak: Cloud Top Temperature(CTT)>-25°C, (b) Moderate: CTT:-25°Cto-40°C, (c) Intense: CTT: -41°Cto -70°C and (d) Very Intense::Less than -70°C Probability of cyclogenesis (formation of depression) :NIL:0%, LOW:1-33%, MODERATE:34-66% and HIGH:67-100%
 This is a guidance Bulletin for WMO/ESCAP Panel Member countries. Visit respective National websites for Country specific Bulletins.