



**REGIONAL SPECIALISED METEOROLOGICAL CENTRE-TROPICAL CYCLONES, NEW DELHI  
TROPICAL WEATHER OUTLOOK**

**DEMS-RSMC TROPICAL CYCLONES NEW DELHI DATED 14.07.2023**

**TROPICAL WEATHER OUTLOOK FOR NORTH INDIAN OCEAN (THE BAY OF BENGAL AND THE ARABIAN SEA) VALID FOR NEXT 168 HOURS ISSUED AT 0600 UTC OF 14.07.2023 BASED ON 0300 UTC OF 14.07.2023.**

**BAY OF BENGAL:**

A CYCLONIC CIRCULATION IS LIKELY TO FORM OVER NORTHWEST BAY OF BENGAL AROUND 16TH JULY, 2023.

BROKEN LOW AND MEDIUM CLOUDS WITH EMBEDDED INTENSE TO VERY INTENSE CONVECTION LAY OVER NORTH AND EASTCENTRAL BAY OF BENGAL AND ARAKAN COAST. SCATTERED LOW AND MEDIUM CLOUDS WITH EMBEDDED MODERATE TO INTENSE CONVECTION LAY OVER WESTCENTRAL BAY OF BENGAL, ANDAMAN SEA AND GULF OF MARTABAN.

**PROBABILITY OF CYCLOGENESIS (FORMATION OF DEPRESSION) DURING NEXT 168 HRS:**

24 HOURS	24-48 HOURS	48-72 HOURS	72-96 HOURS	96-120 HOURS	120-144 HOURS	144-168 HOURS
NIL	NIL	NIL	NIL	NIL	LOW	MODERATE

**ARABIAN SEA:**

SCATTERED TO BROKEN LOW AND MEDIUM CLOUDS WITH EMBEDDED INTENSE TO VERY INTENSE CONVECTION LAY OVER EASTCENTRAL AND SOUTHEAST ARABIAN SEA AND LAKSHADWEEP ISLAND AREA. SCATTERED LOW AND MEDIUM CLOUDS WITH EMBEDDED WEAK TO MODERATE CONVECTION LAY OVER NORTH AND SOUTHWEST ARABIAN SEA, GULF OF KUTCH, GULF OF CAMBAY AND COMORIN AREA.

**PROBABILITY OF CYCLOGENESIS (FORMATION OF DEPRESSION) DURING NEXT 168 HRS:**

24 HOURS	24-48 HOURS	48-72 HOURS	72-96 HOURS	96-120 HOURS	120-144 HOURS	144-168 HOURS
NIL	NIL	NIL	NIL	NIL	NIL	NIL

**REMARK:**

**BAY OF BENGAL (BoB):**

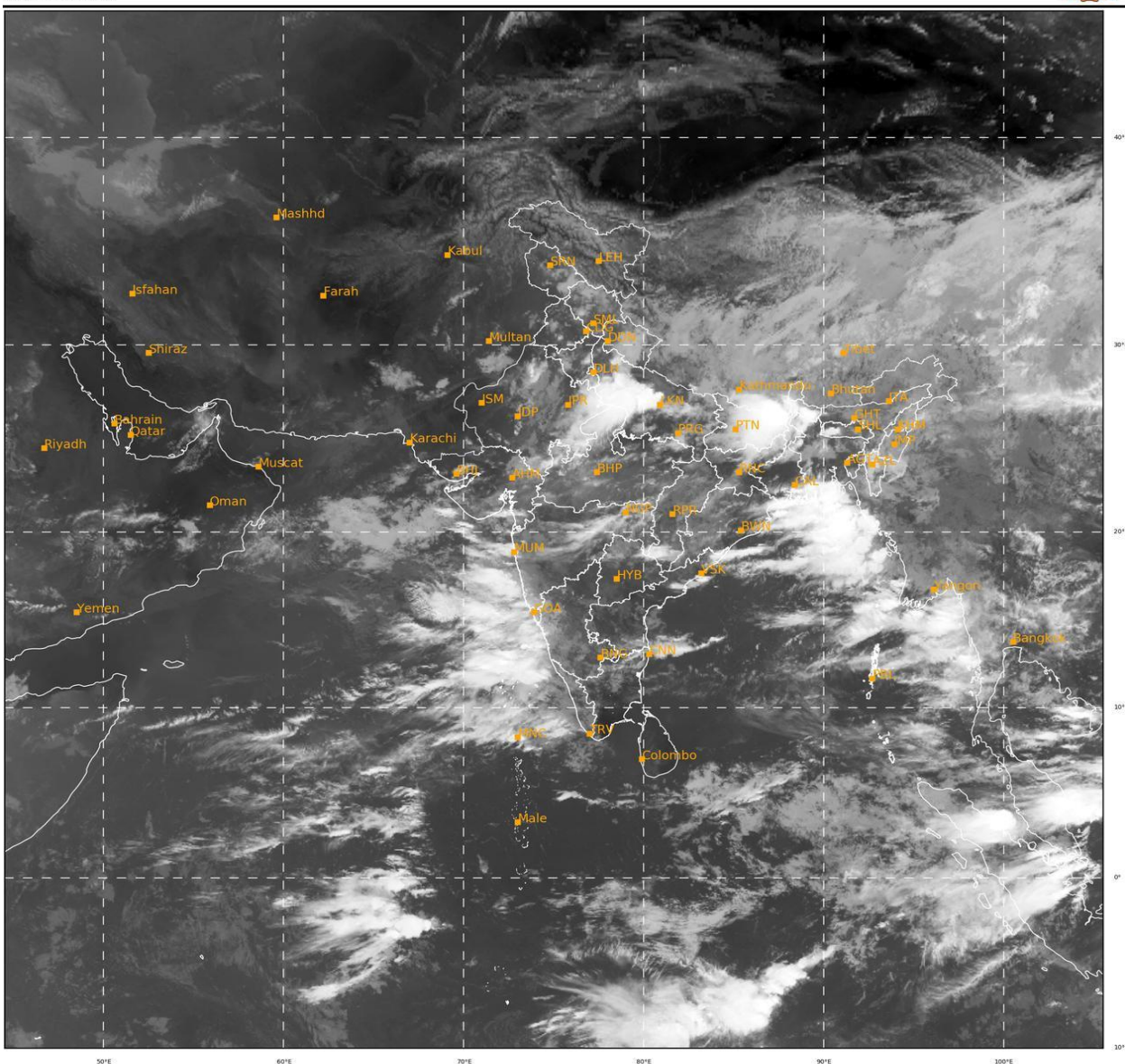
VARIOUS DETERMINISTIC MODELS INCLUDING ECMWF, IMD GFS, NCEP GFS, NCUM, NEPS AND GEFS ARE INDICATING LIKELY DEVELOPMENT OF CYCLONIC CIRCULATION AROUND 16<sup>TH</sup> JULY. UNDER THE INFLUENCE OF THE SAME, A LOW PRESSURE AREA (LPA) IS LIKELY TO FORM OVER NORTHWEST BOB & ADJOINING AREAS AROUND 19<sup>TH</sup>

JULY. ALL MODELS FURTHER SUGGEST THAT THE LPA IS LIKELY TO INTENSIFY INTO A DEPRESSION AND MOVE WEST-NORTHWESTWARD TOWARDS INDIAN LANDMASS DURING SUBSEQUENT 48 HOURS. IMD GPP IS ALSO INDICATING A ZONE OF MAXIMUM GPP ON 20<sup>TH</sup> JULY.

Legends: IMD GFS: India Meteorological Department Global Forecast System, NCUM: National Centre for Medium Range Weather Forecasting Centre (NCMRWF) Unified Model, European Centre for Medium Range Weather Forecasting, GPP: Genesis Potential Parameter, National Centre for Environment Prediction GFS, ECMM: ECMWF multi model, GEFS: GFS ensemble, NEPS: NCUM ensemble prediction system, CNCUM: Coupled NCUM, CPC: Climate Prediction Center, NWS: National Weather Service)

SAT : INSAT-3D IMG  
 IMG\_TIR1 10.8 um  
 LIC Mercator

14-07-2023/(0300 to 0326) GMT  
 14-07-2023/(0830 to 0856) IST



367

924

IMD, DELHI

Cloud distribution: (a) Isolated: <25%, Scattered:25-50%, Broken: 51-75%, Solid:>75%, Convection Intensity: (a) Weak: Cloud Top Temperature (CTT) >-25°C, (b) Moderate: CTT: - 25°C to -40°C, (c) Intense: CTT: - 41°C to -70°C and (d) Very Intense: : Less than -70°C  
 PROBABILITY OF CYCLOGENESIS (FORMATION OF DEPRESSION):NIL: 0%, LOW: 1-33%, , MODERATE: 34-66% AND HIGH: 67-100%  
 This is a guidance Bulletin for WMO/ESCAP Panel Member countries. Visit respective National websites for Country specific Bulletins