



**REGIONAL SPECIALISED METEOROLOGICAL CENTRE-TROPICAL CYCLONES, NEW DELHI
TROPICAL WEATHER OUTLOOK**

DEMS-RSMC TROPICAL CYCLONES NEW DELHI DATED 21.10.2020

TROPICAL WEATHER OUTLOOK FOR NORTH INDIAN OCEAN (THE BAY OF BENGAL AND ARABIAN SEA) VALID FOR NEXT 120 HOURS ISSUED AT 0600 UTC OF 21.10.2020 BASED ON 0300 UTC OF 21.10.2020 .

BAY OF BENGAL:

YESTERDAY'S LOW PRESSURE AREA OVER CENTRAL PARTS OF BAY OF BENGAL (BOB) LAY AS A WELL MARKED LOW PRESSURE AREA OVER WEST-CENTRAL BOB AT 0300 UTC OF 21ST OCTOBER 2020. IT IS VERY LIKELY TO MOVE NORTHWESTWARDS DURING NEXT 24 HOURS AND MOVE NORTH-NORTHEASTWARDS THEREAFTER TOWARDS WEST BENGAL – BANGLADESH COASTS DURING THE SUBSEQUENT 48 HOURS. IT IS LIKELY TO CONCENTRATE INTO A DEPRESSION BY TOMORROW AND FURTHER INTO A DEEP DEPRESSION DURING SUBSEQUENT 24 HOURS.

AS PER THE SATELLITE IMAGERY, THE INTENSITY OF THE SYSTEM IS T 1.0. MINIMUM CLOUD TOP TEMPERATURE IS MINUS 93 DEG C. SCATTERED TO BROKEN LOW AND MEDIUM CLOUDS WITH EMBEDDED INTENSE TO VERY INTENSE CONVECTION LAY OVER NORTH AND ADJOINING CENTRAL BAY OF BENGAL IN ASSOCIATION WITH THE SYSTEM AND ALSO OVER SOUTHWEST BAY OF BENGAL. SCATTERED LOW AND MEDIUM CLOUDS WITH EMBEDDED MODERATE TO INTENSE CONVECTION LAY OVER NORTH ANDAMAN SEA.

PROBABILITY OF CYCLOGENESIS DURING NEXT 120 HRS:

24 HOURS	24-48 HOURS	48-72 HOURS	72-96 HOURS	96-120 HOURS
LOW	HIGH	HIGH	NIL	NIL

ARABIAN SEA:

SCATTERED LOW AND MEDIUM CLOUDS WITH EMBEDDED INTENSE TO VERY INTENSE CONVECTION LAY OVER CENTRAL ARABIAN SEA. SCATTERED LOW AND MEDIUM CLOUDS WITH EMBEDDED MODERATE TO INTENSE CONVECTION LAY OVER SOUTHEAST ARABIAN SEA.

PROBABILITY OF CYCLOGENESIS DURING NEXT 120 HRS :

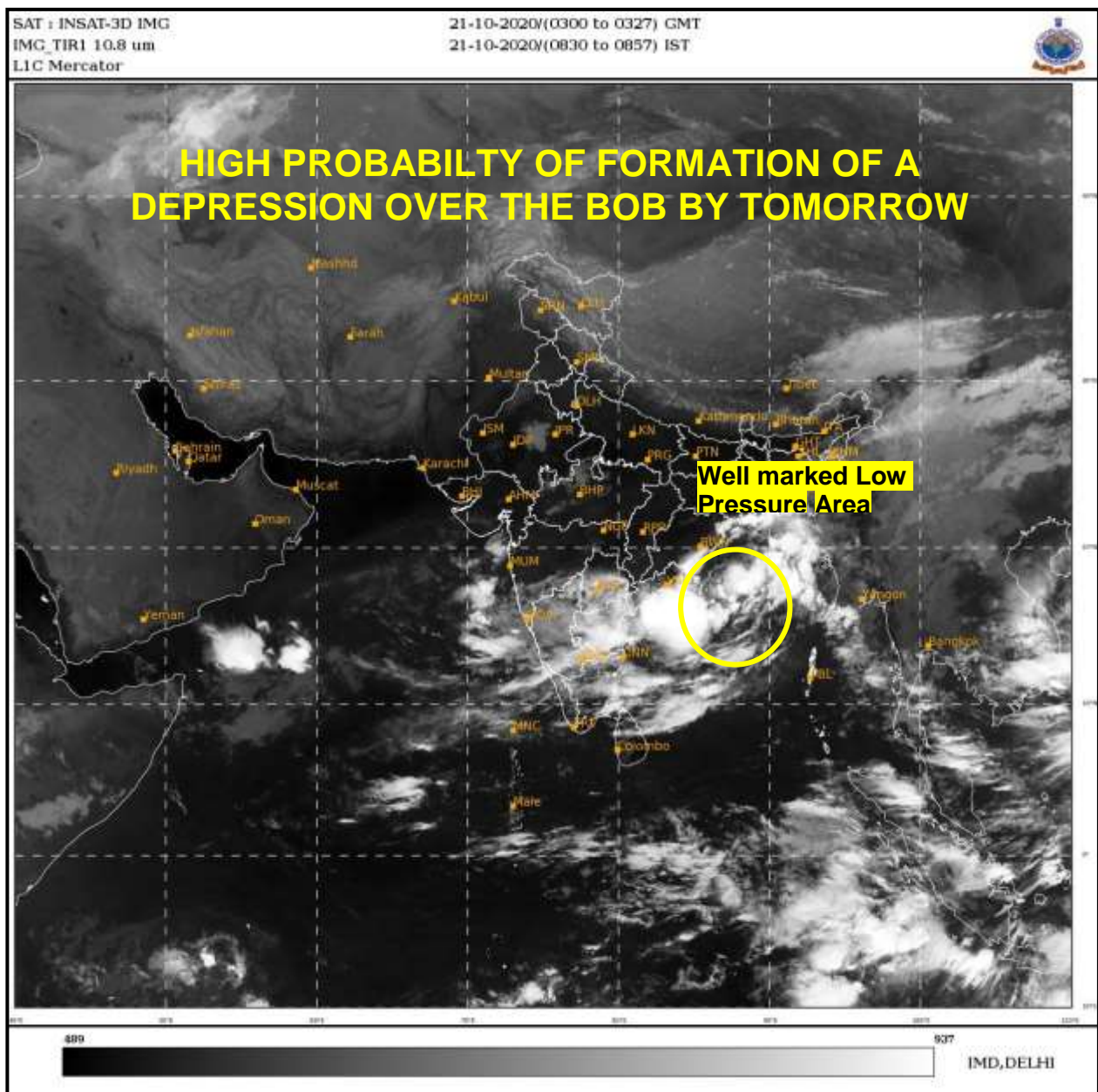
24 HOURS	24-48 HOURS	48-72 HOURS	72-96 HOURS	96-120 HOURS
NIL	NIL	NIL	NIL	NIL

PROBABILITY OF CYCLOGENESIS (FORMATION OF DEPRESSION):NIL: 0%, LOW: 1-25%, FAIR: 26-50%, MODERATE: 51-75% AND HIGH: 76-100%

This is a guidance Bulletin for the WMO/ESCAP Panel Member countries,. Please visit respective National websites for Country specific Bulletins

REMARKS:

SEA SURFACE TEMPERATURE IS AROUND 29-31°C OVER MOST PARTS OF BOB. TROPICAL CYCLONE HEAT POTENTIAL IS AROUND 70-90 KJ/CM² OVER ENTIRE BOB, EXCEPT SOME PARTS ALONG THE EAST COAST OF INDIA OFF ANDHRA PRADESH-TAMILNADU-PUDUCHERRY COASTS. MOST OF THE MODELS ARE INDICATING THAT THE WELL MARKED LOW PRESSURE AREA OVER WEST-CENTRAL BOB WOULD MOVE NORTHWEST-WARDS DURING NEXT 24 HOURS FOLLOWED BY NORTH-NORTHEASTWARD MOVEMENT TOWARDS WEST BENGAL – BANGLADESH COASTS, ACROSS NORTHWEST BOB OFF ODISHA COAST. ALSO, MANY OF THE MODELS ARE INDICATING THAT THE SYSTEM WOULD CONCENTRATE INTO A DEPRESSION BY TOMORROW AND A FEW FEW MODELS SUGGEST PROBABLE FURTHER INTENSIFICATION INTO A DEEP DEPRESSION. HOWEVER, MODELS DIVERGE ABOUT THE TIMING AT WHICH THE SYSTEM CROSSING WEST BENGAL – BANGLADESH COASTS TO A LARGE INTERVAL



PROBABILITY OF CYCLOGENESIS (FORMATION OF DEPRESSION):NIL: 0%, LOW: 1-25%, FAIR: 26-50%, MODERATE: 51-75% AND HIGH: 76-100%

This is a guidance Bulletin for the WMO/ESCAP Panel Member countries,. Please visit respective National websites for Country specific Bulletins