



**REGIONAL SPECIALISED METEOROLOGICAL CENTRE-TROPICAL CYCLONES, NEW DELHI
TROPICAL WEATHER OUTLOOK**

DEMS-RSMC TROPICAL CYCLONES NEW DELHI DATED 04.05.2023

TROPICAL WEATHER OUTLOOK FOR NORTH INDIAN OCEAN (THE BAY OF BENGAL AND THE ARABIAN SEA) VALID FOR NEXT 120 HOURS ISSUED AT 0700 UTC OF 04.05.2023 BASED ON 0300 UTC OF 04.05.2023.

BAY OF BENGAL:

A CYCLONIC CIRCULATION IS LIKELY TO DEVELOP OVER SOUTHEAST BAY OF BENGAL AROUND 6TH MAY, 2023. UNDER ITS INFLUENCE, A LOW PRESSURE AREA IS LIKELY TO FORM OVER THE SAME REGION AROUND 7TH MAY. IT IS LIKELY TO CONCENTRATE INTO A DEPRESSION OVER SOUTHEAST BOB ON 8TH MAY. THEREAFTER, THERE IS A GOOD POSSIBILITY OF ITS INTENSIFICATION INTO A CYCLONIC STORM WHILE MOVING NEARLY NORTHWARDS TOWARDS CENTRAL BOB. THE SYSTEM IS UNDER CONSTANT WATCH AND BEING MONITORED REGULARLY. THE DETAILS OF ITS PATH AND INTENSIFICATION WILL BE PROVIDED AFTER THE FORMATION OF LOW PRESSURE AREA.

SCATTERED LOW AND MEDIUM CLOUDS WITH EMBEDDED INTENSE TO VERY INTENSE CONVECTION LAY OVER SOUTHEAST BAY OF BENGAL AND ANDAMAN SEA. SCATTERED LOW AND MEDIUM CLOUDS WITH EMBEDDED MODERATE TO INTENSE CONVECTION LAY OVER CENTRAL & SOUTHWEST BAY OF BENGAL. SCATTERED LOW AND MEDIUM CLOUDS WITH EMBEDDED WEAK TO MODERATE CONVECTION LAY OVER NORTH BAY OF BENGAL.

PROBABILITY OF CYCLOGENESIS (FORMATION OF DEPRESSION) DURING NEXT 120 HRS:

24 HOURS	24-48 HOURS	48-72 HOURS	72-96 HOURS	96-120 HOURS
NIL	NIL	NIL	LOW	HIGH

ARABIAN SEA:

SCATTERED LOW AND MEDIUM CLOUDS WITH EMBEDDED INTENSE TO VERY INTENSE CONVECTION LAY OVER SOUTHEAST ARABIAN SEA AND COMORIN AREA. SCATTERED LOW AND MEDIUM CLOUDS WITH EMBEDDED ISOLATED WEAK TO MODERATE CONVECTION LAY OVER SOUTH PARTS OF EASTCENTRAL ARABIAN SEA & LAKSHADWEEP ISLANDS AREA.

PROBABILITY OF CYCLOGENESIS (FORMATION OF DEPRESSION) DURING NEXT 120 HRS:

24 HOURS	24-48 HOURS	48-72 HOURS	72-96 HOURS	96-120 HOURS
NIL	NIL	NIL	NIL	NIL

REMARKS:

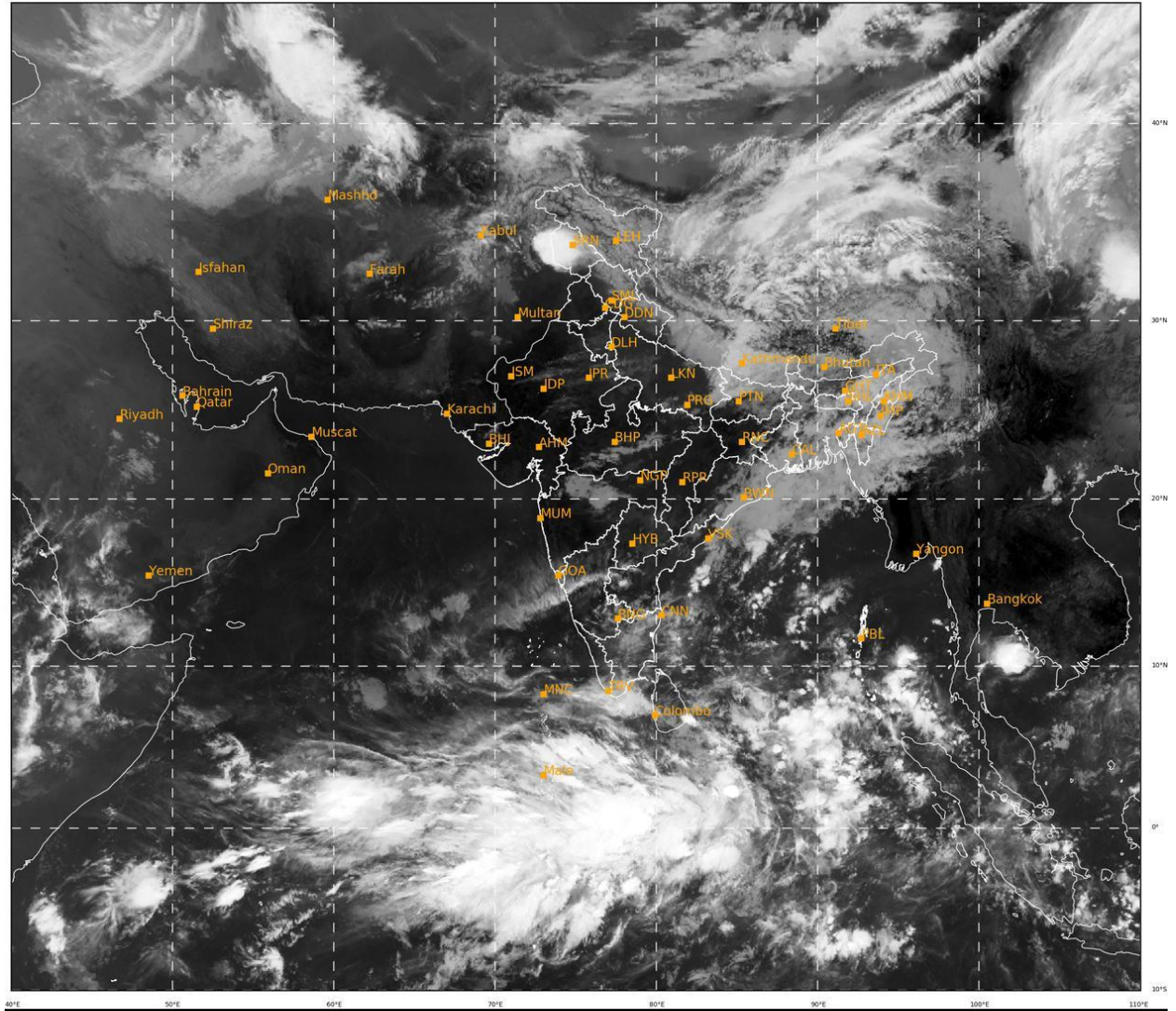
Cloud distribution: (a) Isolated: <25%, Scattered:25-50%, Broken: 51-75%, Solid:>75%, Convection Intensity: (a) Weak: Cloud Top Temperature (CTT) >-25°C, (b) Moderate: CTT: - 25°C to -40°C, (c) Intense: CTT: - 41°C to -70°C and (d) Very Intense: : Less than -70°C
PROBABILITY OF CYCLOGENESIS (FORMATION OF DEPRESSION): NIL: 0%, LOW: 1-33%, , MODERATE: 34-66% AND HIGH: 67-100%
This is a guidance Bulletin for WMO/ESCAP Panel Member countries. Visit respective National websites for Country specific Bulletins

THE MADDEN JULIAN INDEX (MJO) CURRENTLY LIES IN PHASE 5 WITH AMPLITUDE MORE THAN 2. IT WILL CONTINUE IN SAME PHASE DURING NEXT 5 DAYS. THUS, MJO PHASE IS HIGHLY CONDUCTIVE FOR ENHANCED CONVECTION OVER THE BAY OF BENGAL (BOB) DURING NEXT 5-6 CURRENTLY, EASTERLY WINDS (1-3 MPS) ARE LIKELY TO PREVAIL OVER SOUTH ANDAMAN SEA AND SOUTH BOB IN THE LOWER TROPOSPHERIC LEVELS. THEREAFTER, THE WESTERLY WINDS ARE LIKELY TO PREVAIL OVER THE SOUTH BOB AND SOUTH ANDAMAN SEA WITH EASTERLY WINDS OVER CENTRAL & NORTH BOB FROM 8TH MAY ONWARDS. THUS, THE EQUATORIAL WAVES AND MJO ARE LIKELY TO COLLECTIVELY CONTRIBUTE TOWARDS ENHANCEMENT OF CONVECTIVE ACTIVITY AND HENCE CYCLOGENESIS OVER SOUTH BOB AROUND 8TH MAY ONWARDS.

THE TROPICAL CYCLONE HEAT POTENTIAL (TCHP) IS MORE THAN 100 KJ/CM² OVER MAJOR PARTS OF SOUTH ANDAMAN SEA & ADJOINING SOUTHEAST BOB AND CENTRAL BOB. IT IS INDICATING DECREASING TENDENCY ABOUT 60-70 KJ/CM² ALONG THE EAST COAST OF INDIA & ALONG MYANMAR COAST. SEA SURFACE TEMPERATURE (SST) IS AROUND 30-32°C OVER ENTIRE BOB. THE SEA CONDITIONS OVER BOB ARE ALSO CONDUCTIVE FOR CYCLOGENESIS.

CONSIDERING THE MODEL GUIDANCE, IMD GFS IS INDICATING A LOW PRESSURE AREA (LPA) OVER SOUTHEAST BOB AROUND 7TH, DEPRESSION AROUND 8TH AND CYCLONIC STORM (CS) AROUND 9TH. IT IS INDICATING NORTH-NORTHWESTWARDS MOVEMENT TILL 10TH AND NORTHEASTWARDS RECURVATURE THEREAFTER TOWARDS SOUTHEAST BANGLADESH & ADJOINING MYANMAR COASTS. INTENSIFICATION UPTO VERY SEVERE CYCLONIC STORM (VSCS) CATEGORY IS INDICATED. AGAINST YESTERDAY'S GUIDANCE, NCUM IS INDICATING NORTHWESTWARDS MOVEMENT TOWARDS TAMILNADU COAST AND EMERGENCE INTO SOUTHEAST & ADJOINING EASTCENTRAL ARABIAN SEA. ECMWF IS INDICATING AN LPA OVER SOUTHEAST BOB AROUND 7TH, DEPRESSION OVER SOUTHEAST BOB AND ADJOINING SOUTH ANDAMAN SEA AROUND 9TH WITH GRADUAL NORTH-NORTHWESTWARDS MOVEMENT AND INTENSIFICATION INTO CYCLONIC STORM AROUND 10TH. IT IS INDICATING NORTH-NORTHEASTWARDS RECURVATURE FROM 11TH MAY ONWARDS TOWARDS MYANMAR COAST. TAKING NCUM AS AN OUTLIER, NWP MODEL GUIDANCE INDICATE GENESIS (DEPRESSION) OVER SOUTHEAST BAY OF BENGAL DURING 08/1200 UTC-09/0000 UTC. ALL MODELS ARE INDICATING INTENSIFICATION INTO A VERY SEVERE CATEGORY STORM. HOWEVER, THERE IS LARGE VARIATION AMONG VARIOUS MODELS TODAY, WRT TRACK.

HENCE TO CONCLUDE, A CYCLONIC CIRCULATION IS LIKELY TO DEVELOP OVER SOUTHEAST BAY OF BENGAL AROUND 6TH MAY, 2023. UNDER ITS INFLUENCE, A LOW PRESSURE AREA IS LIKELY TO FORM OVER THE SAME REGION AROUND 7TH MAY. IT IS LIKELY TO CONCENTRATE INTO A DEPRESSION OVER THE SAME REGION ON 8TH MAY. THEREAFTER, THERE IS A GOOD POSSIBILITY OF ITS INTENSIFICATION INTO A CYCLONIC STORM WHILE MOVING NEARLY NORTHWARDS TOWARDS CENTRAL BOB. **HIGH PROBABILITY HAS BEEN ASSIGNED TO GENESIS (FORMATION OF DEPRESSION) OVER SOUTHEAST BAY OF BENGAL ON DAY 5 DURING 8TH-9TH MAY, 2023.** THE SYSTEM IS UNDER CONSTANT WATCH AND BEING MONITORED REGULARLY. THE DETAILS OF ITS PATH AND INTENSIFICATION WILL BE PROVIDED AFTER THE FORMATION OF LOW PRESSURE AREA.



435

936

IMD, DELHI

Cloud distribution: (a) Isolated: <25%, Scattered:25-50%, Broken: 51-75%, Solid:>75%, Convection Intensity: (a) Weak: Cloud Top Temperature (CTT) >-25°C, (b) Moderate: CTT: - 25°C to -40°C, (c) Intense: CTT: - 41°C to -70°C and (d) Very Intense: : Less than -70°C
PROBABILITY OF CYCLOGENESIS (FORMATION OF DEPRESSION): NIL: 0%, LOW: 1-33%, , MODERATE: 34-66% AND HIGH: 67-100%
This is a guidance Bulletin for WMO/ESCAP Panel Member countries. Visit respective National websites for Country specific Bulletins