



REGIONAL SPECIALISED METEOROLOGICAL CENTRE-TROPICAL CYCLONES, NEW DELHI
TROPICAL WEATHER OUTLOOK

DEMS-RSMC TROPICAL CYCLONES NEW DELHI DATED 16.10.2021

TROPICAL WEATHER OUTLOOK FOR NORTH INDIAN OCEAN (THE BAY OF BENGAL AND ARABIAN SEA) VALID FOR NEXT 120 HOURS ISSUED AT 0600 UTC OF 16.10.2021 BASED ON 0300 UTC OF 16.10.2021.

BAY OF BENGAL:

YESTERDAY'S LOW PRESSURE AREA OVER WEST-CENTRAL AND ADJOINING NORTHWEST BOB OFF NORTH ANDHRA PRADESH – SOUTH ODISHA COASTS LAY OVER NORTH COASTAL ANDHRA PRADESH AND ADJOINING WEST-CENTRAL BOB AT 0300 UTC OF TODAY, THE 16TH OCTOBER. ASSOCIATED CYCLONIC CIRCULATION EXTENDS UPTO 5.8 KM ABOVE MEAN SEA LEVEL TILTING SOUTHWESTWARDS WITH HEIGHT.

SCATTERED TO BROKEN LOW AND MEDIUM CLOUDS WITH EMBEDDED INTENSE TO VERY INTENSE CONVECTION LAY OVER BAY OF BENGAL, ANDAMAN SEA, GULF OF MARTABAN AND TENASSERIM COAST.

PROBABILITY OF CYCLOGENESIS (FORMATION OF DEPRESSION) DURING NEXT 120 HRS:

24 HOURS	24-48 HOURS	48-72 HOURS	72-96 HOURS	96-120 HOURS
NIL	NIL	NIL	NIL	NIL

ARABIAN SEA:

YESTERDAY'S LOW PRESSURE AREA OVER LAKSHADWEEP AREA & ADJOINING SOUTHEAST ARABIAN SEA LAY OVER SOUTHEAST ARABIAN SEA OFF KERALA COAST AT 0300 UTC OF TODAY, THE 16TH OCTOBER. ASSOCIATED CYCLONIC CIRCULATION EXTENDS UPTO 4.5 KM ABOVE MEAN SEA LEVEL.

BROKEN LOW AND MEDIUM CLOUDS WITH EMBEDDED INTENSE TO VERY INTENSE CONVECTION LAY OVER SOUTHEAST ARABIAN SEA ADJOINING EASTCENTRAL ARABIAN SEA LAKSHADWEEP AND COMORIN AREA. SCATTERED LOW AND MEDIUM CLOUDS WITH EMBEDDED WEAK TO MODERATE CONVECTION LAY OVER SOUTHWEST ARABIAN SEA.

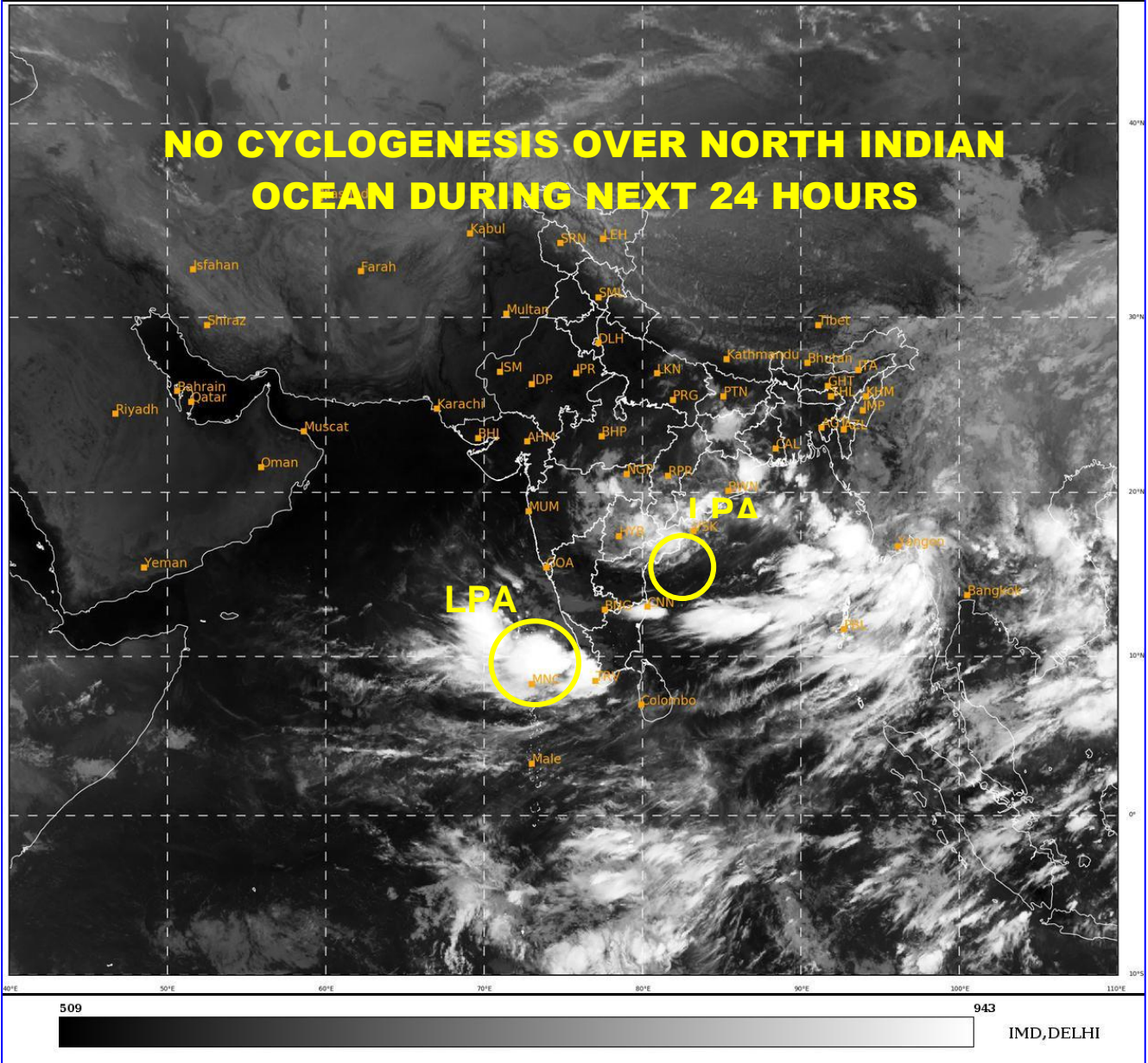
PROBABILITY OF CYCLOGENESIS (FORMATION OF DEPRESSION) DURING NEXT 120 HRS:

24 HOURS	24-48 HOURS	48-72 HOURS	72-96 HOURS	96-120 HOURS
NIL	NIL	NIL	NIL	NIL

REMARKS: NIL

SAT : INSAT-3D IMG
IMG_TIR1 10.8 um
L1C Mercator

16-10-2021/(0300 to 0326) GMT
16-10-2021/(0830 to 0856) IST



*LPA STANDS FOR LOW PRESSURE AREA

PROBABILITY OF CYCLOGENESIS (FORMATION OF DEPRESSION):NIL: 0%, LOW: 1-25%, FAIR: 26-50%, MODERATE: 51-75% AND HIGH: 76-100%
This is a guidance Bulletin for the WMO/ESCAP Panel Member countries,. Please visit respective National websites for Country specific Bulletins