



**REGIONAL SPECIALISED METEOROLOGICAL CENTRE-TROPICAL CYCLONES, NEW DELHI
TROPICAL WEATHER OUTLOOK**

DEMS-RSMC TROPICAL CYCLONES NEW DELHI DATED 12.03.2025

TROPICAL WEATHER OUTLOOK FOR THE NORTH INDIAN OCEAN (THE BAY OF BENGAL AND THE ARABIAN SEA) VALID FOR THE NEXT 168 HOURS ISSUED AT 0600 UTC OF 12.03.2025 BASED ON 0300 UTC OF 12.03.2025.

BAY OF BENGAL:

Scattered low and medium clouds with embedded moderate to intense convection lay over southwest Bay of Bengal off Tamil Nadu Coast, Palk Strait and Gulf of Mannar. Scattered low and medium clouds with embedded isolated weak to moderate convection lay over southeast Bay of Bengal & Andaman Sea.

***PROBABILITY OF CYCLOGENESIS (FORMATION OF DEPRESSION) DURING NEXT 168 HRS:**

24 HOURS	24-48 HOURS	48-72 HOURS	72-96 HOURS	96-120 HOURS	120-144 HOURS	144-168 HOURS
NIL	NIL	NIL	NIL	NIL	NIL	NIL

***NOTE: EVERY 24HR FORECAST IS VALID UPTO 0300 UTC (0830 IST) OF NEXT DAY**

ARABIAN SEA:

A fresh Cyclonic Circulation lay over West Equatorial Indian Ocean & adjoining Maldives area at 0.9 km above mean sea level at 0300 UTC of today the 12th March, 2025.

A fresh Cyclonic Circulation lay over Comorin area at 5.8 km above mean sea level at 0300 UTC of today the 12th March, 2025.

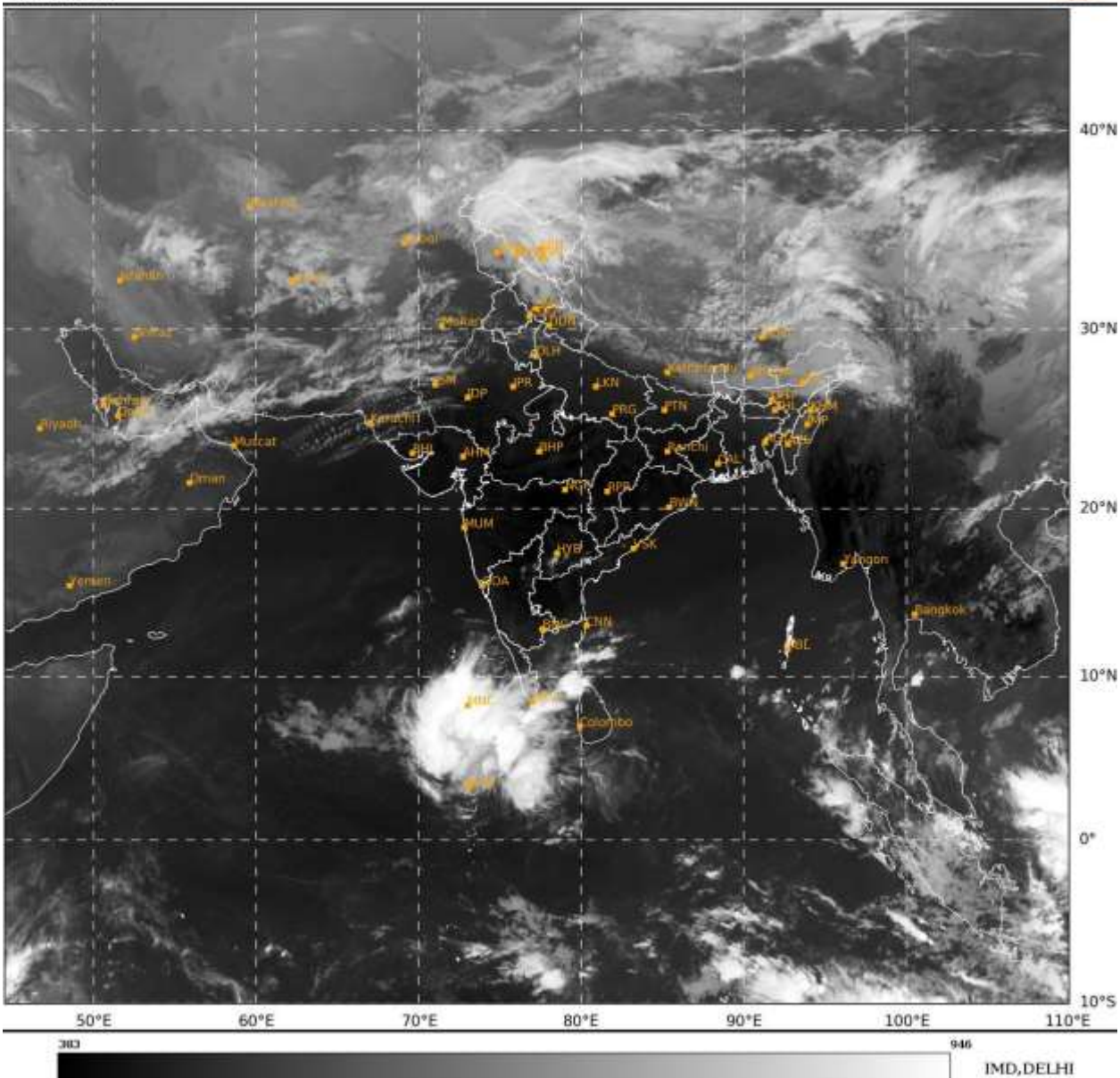
Scattered low and medium clouds with embedded intense to very intense convection lay over southeast Arabian Sea, Lakshadweep Islands Area, Maldives and Comorin Area. Scattered low and medium clouds with embedded isolated weak to moderate convection lay over north Arabian Sea & south parts of eastcentral Arabian Sea.

***PROBABILITY OF CYCLOGENESIS (FORMATION OF DEPRESSION) DURING NEXT 168 HRS:**

24 HOURS	24-48 HOURS	48-72 HOURS	72-96 HOURS	96-120 HOURS	120-144 HOURS	144-168 HOURS
NIL	NIL	NIL	NIL	NIL	NIL	NIL

***NOTE: EVERY 24HR FORECAST IS VALID UPTO 0300 UTC (0830 IST) OF NEXT DAY**

REMARKS: NIL



Cloud distribution: (a) Isolated: <25%, Scattered:25-50%, Broken: 51-75%, Solid:>75%, Convection Intensity: (a) Weak: Cloud Top Temperature(CTT)>-25°C,(b)Moderate:CTT:-25°Cto-40°C,(c)Intense:CTT: -41°Cto -70°Cand(d)VeryIntense:Lessthan -70°C
PROBABILITYOFCYCLOGENESIS(FORMATIONOFDEPRESSION):NIL:0%,LOW:1-33%,MODERATE:34-66%ANDHIGH:67-100%
ThisisaguidanceBulletinforWMO/ESCAPPanelMembercountries.VisitrespectiveNationalwebsitesforCountryspecificBulletins