



**REGIONAL SPECIALISED METEOROLOGICAL CENTRE-TROPICAL CYCLONES, NEW DELHI
TROPICAL WEATHER OUTLOOK**

DEMS-RSMC TROPICAL CYCLONES NEW DELHI DATED 20.09.2020

TROPICAL WEATHER OUTLOOK FOR NORTH INDIAN OCEAN (THE BAY OF BENGAL AND ARABIAN SEA) VALID FOR NEXT 120 HOURS ISSUED AT 0600 UTC OF 20.09.2020 BASED ON 0300 UTC OF 20.09.2020 .

BAY OF BENGAL:

A LOW PRESSURE AREA FORMED OVER NORTHEAST BAY OF BENGAL & NEIGHBOURHOOD IN THE EARLY MORNING (0000 UTC) OF TODAY, THE 20TH SEPTEMBER. AT 0300 UTC, IT PERSISTS OVER SAME REGION. IT IS LIKELY TO BECOME MORE MARKED OVER NORTHWEST BAY OF BENGAL & NEIGHBOURHOOD DURING NEXT 24 HOURS.

BROKEN LOW AND MEDIUM CLOUDS WITH EMBEDDED INTENSE TO VERY INTENSE CONVECTION LAY OVER BAY OF BENGAL NORTH OF LATITUDE 10.0N GULF OF MARTABAN & NORTH ANDAMAN SEA. SCATTERED LOW AND MEDIUM CLOUDS WITH EMBEDDED MODERATE TO INTENSE CONVECTION LAY OVER REST SOUTH BAY OF BENGAL & SOUTH ANDAMAN SEA.

PROBABILITY OF CYCLOGENESIS DURING NEXT 120 HRS:

24 HOURS	24-48 HOURS	48-72 HOURS	72-96 HOURS	96-120 HOURS
NIL	NIL	NIL	NIL	NIL

ARABIAN SEA:

SCATTERED LOW AND MEDIUM CLOUDS WITH EMBEDDED MODERATE TO INTENSE CONVECTION LAY OVER EASTCENTRAL AND ADJOINING NORTHEAST ARABIAN SEA ALSO OVER SOUTHEAST ARABIAN SEA.

PROBABILITY OF CYCLOGENESIS DURING NEXT 120 HRS :

24 HOURS	24-48 HOURS	48-72 HOURS	72-96 HOURS	96-120 HOURS
NIL	NIL	NIL	NIL	NIL

REMARKS:

Nil

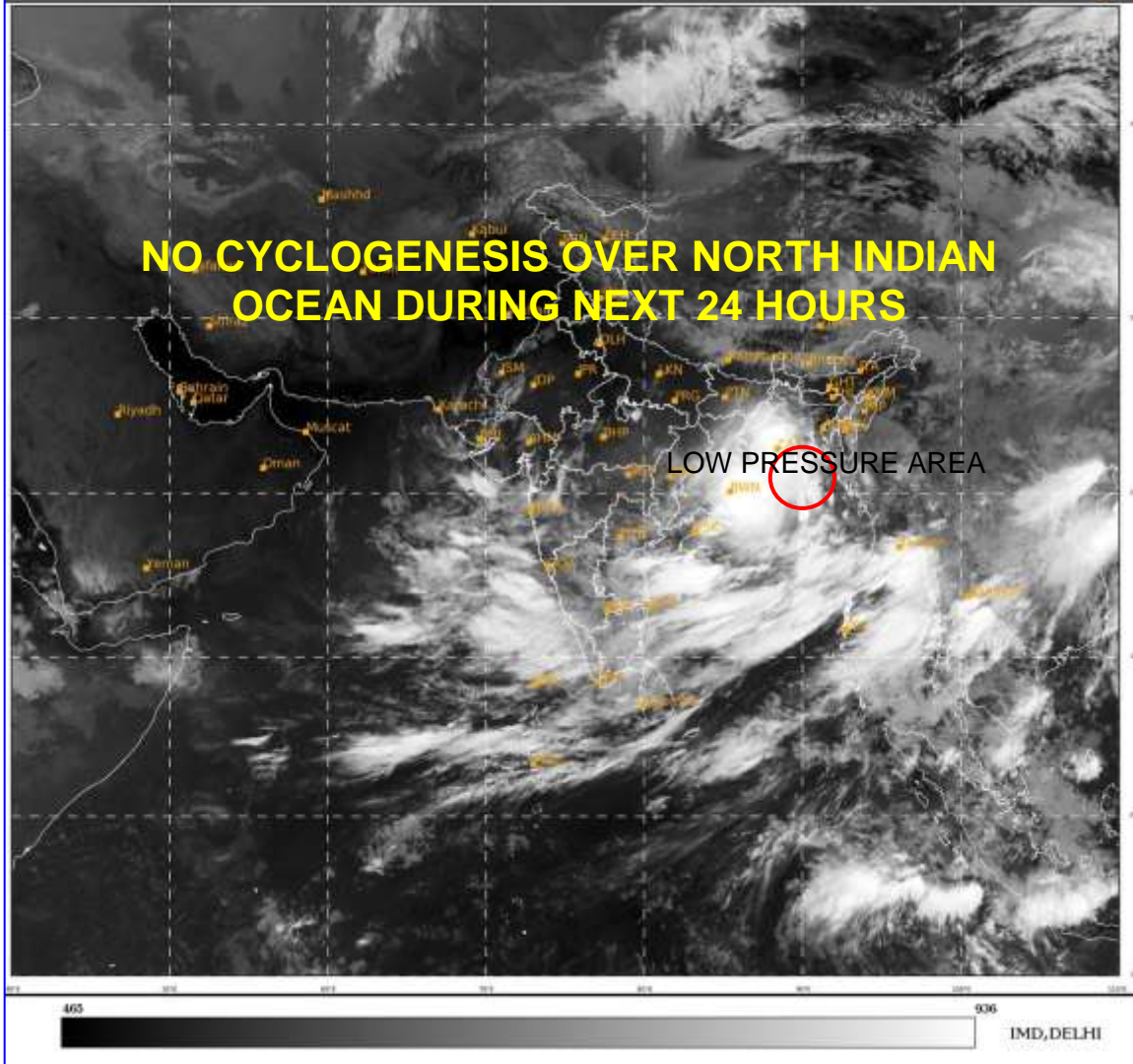
SAT : INSAT-3D IMG
IMG_TIR1 10.8 um
LIC Mercator

20-09-2020(0300 to 0327) GMT
20-09-2020(0830 to 0857) IST




NO CYCLOGENESIS OVER NORTH INDIAN OCEAN DURING NEXT 24 HOURS

LOW PRESSURE AREA



PROBABILITY OF CYCLOGENESIS (FORMATION OF DEPRESSION):NIL: 0%, LOW: 1-25%, FAIR: 26-50%, MODERATE: 51-75% AND HIGH: 76-100%

 This is a guidance Bulletin for the WMO/ESCAP Panel Member countries,. Please visit respective National websites for Country specific Bulletins