



**REGIONAL SPECIALISED METEOROLOGICAL CENTRE -TROPICAL CYCLONES, NEW DELHI
TROPICAL WEATHER OUTLOOK**

DEMS-RSMC TROPICAL CYCLONES NEW DELHI DATED 19.06.2026

TROPICAL WEATHER OUTLOOK FOR THE NORTH INDIAN OCEAN (THE BAY OF BENGAL AND THE ARABIAN SEA) VALID FOR THE NEXT 168 HOURS ISSUED AT 0600 UTC OF 19.06.2026 BASED ON 0300 UTC OF 19.06.2026.

BAY OF BENGAL:

Scattered to broken low and medium clouds with embedded intense convection lay over Bay of Bengal, Andaman Sea, Arakan Coast, Gulf of Martaban, and Tenasserim Coast.

***PROBABILITY OF CYCLOGENESIS (FORMATION OF DEPRESSION) DURING NEXT 168 HRS)**

24 HOURS	24-48 HOURS	48-72 HOURS	72-96 HOURS	96-120 HOURS	120-144 HOURS	144-168 HOURS
NIL	NIL	NIL	NIL	NIL	NIL	NIL

***NOTE: EVERY 24HR FORECAST IS VALID UPTO 0300 UTC (0830 IST) OF NEXT DAY**

ARABIAN SEA:

Yesterday's upper air cyclonic circulation over South East Arabian Sea & adjoining Kerala now lies over north Lakshadweep & neighborhood at 3.1 km above mean sea level at 0300 UTC of today, 19th June, 2026.

Scattered to broken low and medium clouds with embedded intense convection lay over south adjoining central Arabian Sea. Scattered low and medium clouds with embedded moderate to intense convection lay over Lakshadweep Islands area, Maldives, and Comorin area, and isolated weak to moderate convection lay over north Arabian Sea and Gulf of Cambay.

***PROBABILITY OF CYCLOGENESIS (FORMATION OF DEPRESSION) DURING NEXT 168 HRS:**

24 HOURS	24-48 HOURS	48-72 HOURS	72-96 HOURS	96-120 HOURS	120-144 HOURS	144-168 HOURS
NIL	NIL	NIL	NIL	NIL	NIL	NIL

***NOTE: EVERY 24HR FORECAST IS VALID UPTO 0300 UTC (0830 IST) OF NEXT DAY**

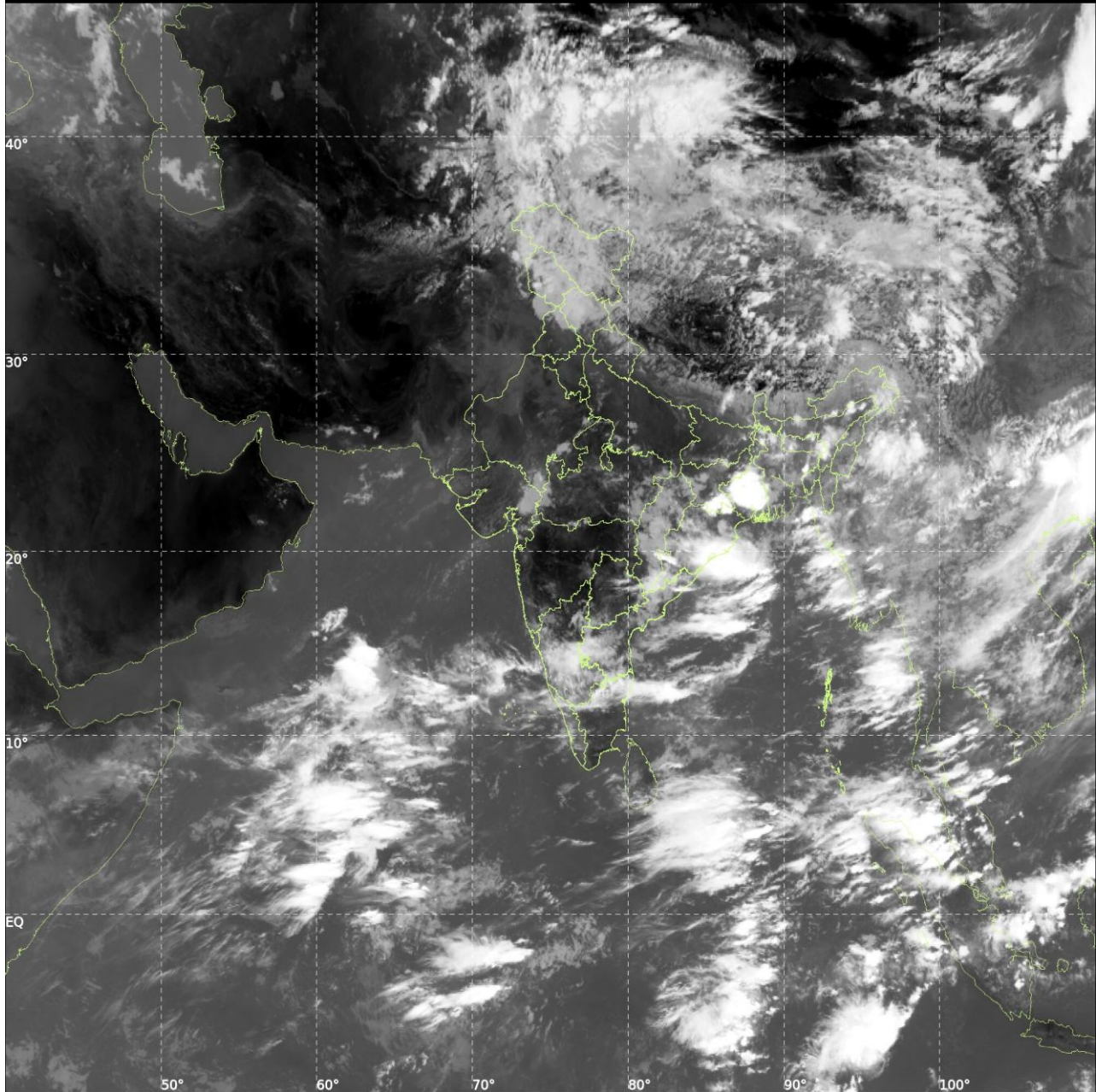
REMARKS: NIL



INSAT-3DS IMG, Thermal Infrared1 Count @ 10.83 μ m
GMT:19-06-2026/(0530-0557) IST:19-06-2026/(1100-1127)
L1C MERCATOR (LINEAR STRETCH: 1%)

338

904



Cloud distribution: (a) Isolated: <25%, Scattered:25-50%, Broken: 51-75%, Solid:>75%, Convection Intensity: (a) Weak: Cloud Top Temperature(CTT)>-25°C, (b) Moderate: CTT:-25°Cto-40°C, (c) Intense: CTT: -41°Cto -70°C and (d) Very Intense::Less than -70°C Probability of cyclogenesis (formation of depression) :NIL:0%, LOW:1-33%, MODERATE:34-66% and HIGH:67-100%
This is a guidance Bulletin for WMO/ESCAP Panel Member countries. Visit respective National websites for Country specific Bulletins.